



Güneş İle Aranıza Giriyoruz ... / We Become between You & The Sun...



Türkiye'nin İlk Seksiyonel Kapı Üreticisi / *First Sectional Door Producer in Turkey*
İlk Yerli Panelli Seksiyonel Kapı / *First Sectional Door with Locally Produced Panel*
İlk TUV Belgeli Yerli Hızlı PVC Kapı / *First Local, TUV Certified HI-Speed PVC Door*
İlk CE Belgeli Yerli Yükleme Rampası / *First Local, CE Certified Dock Levellers*
İlk CE Belgeli Yerli Otomatik Kapı / *First Local, CE Certified Automatic Sliding Door*



ALKUR KAPI SİSTEMLERİ A. Ş.
Keyap Çarşısı Sitesi F2 Blok No:103
34775 Yukarıdudullu Ümraniye
İSTANBUL TÜRKİYE

www.alkur.com.tr

-  **Uzun ömürlü / Durable**
-  **Güneş kırıcı / Polar Protection**
-  **Estetik ve ergonomik / Aesthetics & Ergonomic**
-  **Rüzgar dayanımlı / Wind Resistant**

GÖLGE SİSTEMLERİ / EXTERNAL BLINDS

SUN SCREEN
Zip Perde • Diş Perde

TEKNİK ÖZELLİKLER / TECHNICAL SPECIFICATIONS



Üst Kutu ve Sarım Borusu

REVO 100 için; 100x100mm haddelenmiş alüminyumdan üretilmiştir.
Boru ise galvaniz çelik olmalıdır.

The Screen Headbox and Fabric Roll

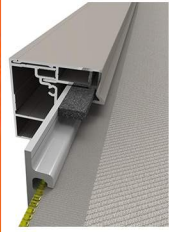
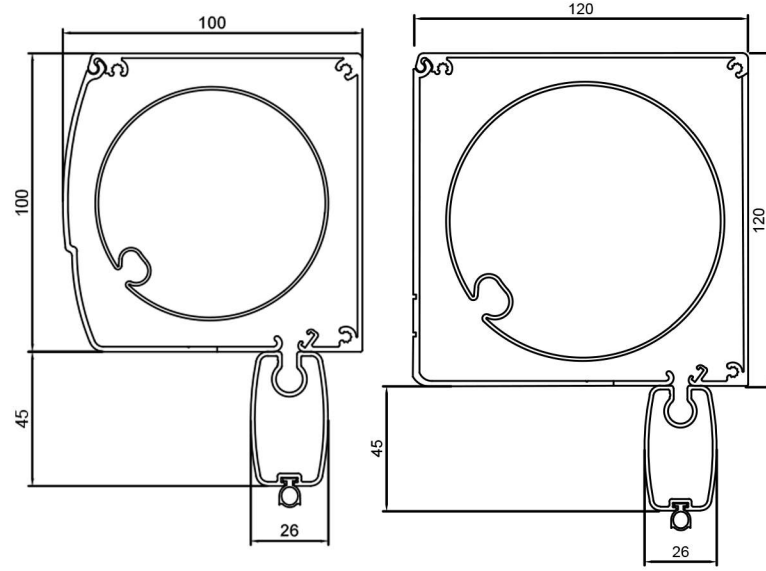
For REVO 100 : 100x100mm
For REVO 120 : 120x120mm
The box is constructed of extruded profiles.
Fabric roller material: Steel

Alt Etek

REVO 100 için; 26x45mm,
REVO 120 için; 26x45mm alüminyum olmalıdır.

Bottom Bar

REVO 100 : 26x45 mm
REVO 120 : 26x45 mm
The bottom bar is constructed of extruded profiles.



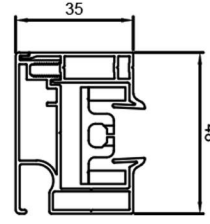
Yan Dikme Detay

H-PVC kanal üzerine siyah akustik takoz yapıştırılmalıdır. Rüzgarlı havalarda perdenin ses yapması engellenmektedir.

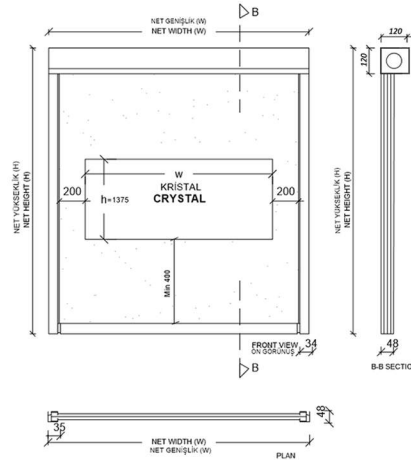
The Side Channel Detail

On the H-PVC plastic channel there should be adhered acoustic black plastic wedges. Should prevent the system windy weather.

REVO 100- REVO 120 Yan Kanal Ölçüleri Side Channel Dimensions



Açık Yan Kanal (S)
Open Side Channel



Yan Dikme Detay

35x48mm haddelenmiş alüminyumdan üretilmiştir.

The Side Channel Detail

Made from 35x48mm extruded aluminum.

KUMAŞ SEÇENEKLERİ / FABRIC OPTIONS

KUMAŞ / FABRIC

PVC kaplama camelyaf ipliklerden örülmüştür. / *PVC coated fiberglass mesh.*

Şeklini korur. / *It retains its shape.*

Isı ve nemden etkilenmez. / *It is not affected by heat and moisture.*

Alev yürütmeme özelliğine sahiptir. / *Flame-proof feature.*

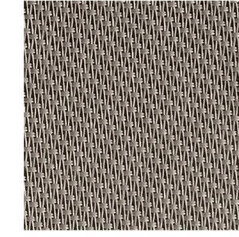
Sabunlu su ile kolayca temizlenebilir. / *Can be easily cleaned with soap nad water.*



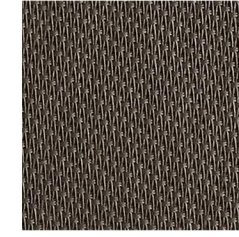
0202



0808



3333



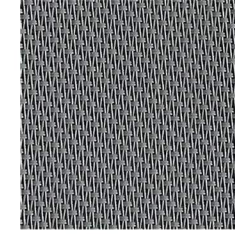
1111



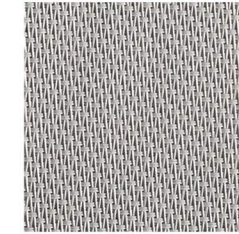
0909



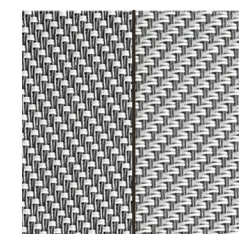
0207



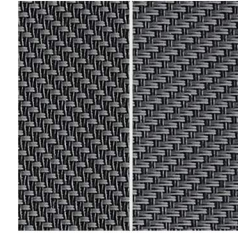
0101



0707



0102



0110



1010

KUMAŞ KODLARI / FABRIC CODES

0202 Beyaz Beyaz / *White White*
0808 Bej Bej / *Linen Linen*
3333 Kum Beji / *Sandstone*
1111 Bronz Bronz / *Bronze - Bronze*
0909 Lacivert Lacivert / *Azur Azur*
0207 Beyaz Kum Gri / *White Pearl*

0101 Gri Gri / *Grey Grey*
0707 Kum Gri Kum Gri / *Pearl Pearl*
0102 Gri Beyaz / *Grey White*
0110 Gri Siyah / *Grey Black*
1010 Siyah Siyah / *Black Black*

TEKNİK ÖZELLİKLER / TECHNICAL SPECIFICATIONS

	REVO 100	REVO 120
MALZEME / MATERIAL	EN AW - 6063 T66	
ELEKTROSTATİK BOYAMA / POWDER COATING	60-80 micron	
ELOKSAL / ANODISATION	20 micron	
ÜST KUTU EBAT / HEADBOX (WxH mm)	100x100	120x120
ALT ÇITA / BOTTOM BAR	26x45	
YAN KANALLAR / SIDE CHANNELS	35x48	
BAĞLANTI YAN KANALLARI / COUPLING SIDE CHANNEL	58x48	
MAKSİMUM / MAXIMUM	4000x2700 3000x3500	6000x3400 3200x6000

