



CNC 6-Sides Boring Machine NCB612DX



Find more: www.nanxingmac.com

Follow us: Nanxing Machinery



Description

- Nanxing has invested hundreds of millions for taking in 500 world best CNC and robot machines for metal works, making its production ranked No. 1 in the woodworking machinery industry. SOP professional assemble lines.
- Powerful CNC CONTROL SYSTEM equipped with specialist software to run for high process efficiency and easy operation, the fastest in the field.
- Full function operation mode can satisfy different process request.
- 2 top drilling blocks with drills Ver. 18×2 plus Hor. X: 6×2 & Y 4×2 , 1 bottom drilling block with ver. 9 TOTAL drills are 65. Top and bottom have 3,5kw spindle router.
- Adapt 7 kinds of file format and common furniture design software.
- Customer Reference: **30+** countries; **2000+** machines

Details

1. Machine body

- Heavy duty machine body is welded with square tube and laser-cut steel plates, then through processing of advanced CNC machine for metal work, hence enhance the stability and strength, reduce the vibration in the process; Gantry and machine body have been designed as one organic structure of high rigidity; Machine
- Frame body pass the **heat treatment** and **vibration aging treatment** to guarantees the whole service life without deforming.
- After **sandblasting** and **painting**, the top-grade CNC metal processing machines are used to process the body and components to make sure perfect quality and detail.



2. Quality control

- Advanced measuring equipment and strict QC system also help to make sure the final machine we offer to our customers are of high quality;
- All the machines are delivered with Quality Certificate signed by QC specialist.





3. Professional assembly line

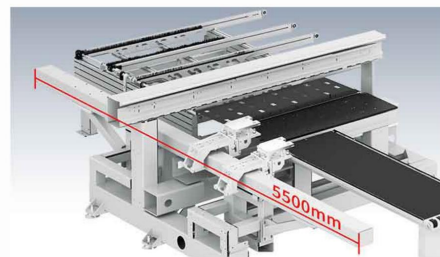
- Assembly is final and important step for better machine performance. Nanxing's professional assembly lines from machine body to small electrical components were by experienced technicians that guarantee machine standardization and performance.



4. Feed-in

Air float table

- Floating feed table full of steel balls with sufficient air ensures panel transmitted extremely smooth without any scratches on panel surface.
- Air supplier: 1.1kw



◆ 重型整体式机架
Heavy-duty integrated machine body

Dual clamps

- Long guiding rail with dual clamps for fast processing work of various work pieces; Special air blow design to clean the clamp before clamp the workpiece.

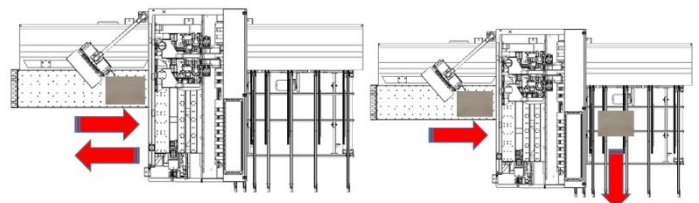


Option 1

Option 2

Feed-out

- Can choose feed mode feed-in & out in front side or feed-in in front and feed-out in back.
- Feed out in back mode with 2 steps smooth out.
- The hairbrush and conveyor belt can offer very good protection to the surface.





5. Positioning

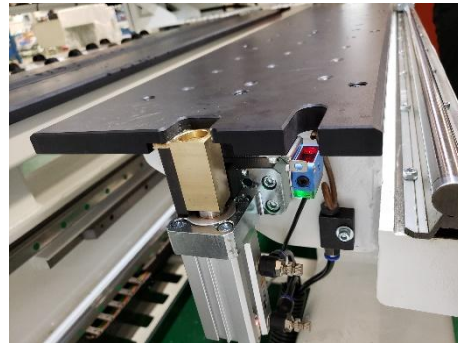
Side alignment

- Dual clampers cooperate well with auto side alignment to guarantee precision and stability in panel processing.



Stopper

- The stop is strong design to offer stable alignment. Besides, the sensor can measure the workpiece X length. The air blow will clean the dust on the sensor.



Press device

- The stop is strong design to offer stable alignment. Besides, the sensor can measure the workpiece X length. The air blow will clean the dust on the sensor.



6. Dust collecting System of spindle

- Good design without dust on workpiece when doing the routing.





7. Drilling blocks

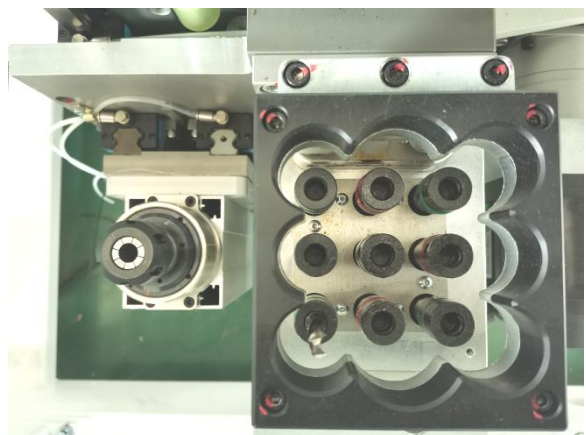
Dual Top drilling block:

- 3.5kw world famous main spindle + 2 boring blocks, increasing processing efficiency at lease by 30%
- Vertical drills: 18*2
Horizontal drills: 6*2 in X direction; 4*2 in Y direction.



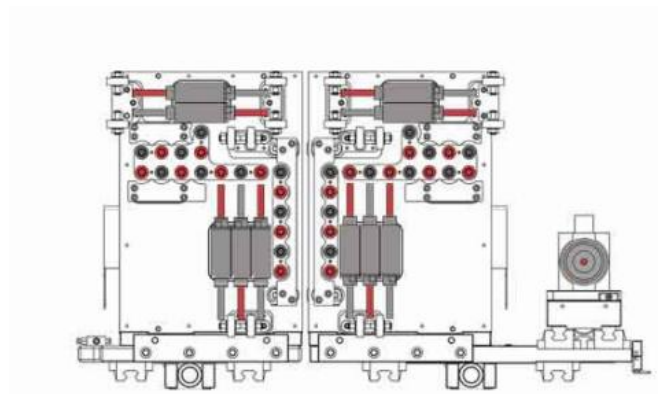
Bottom drilling block:

- 3.5kw world famous main spindle+ one boring block
- 9 vertical drills



Vertical drills in collinear

- Collinear vertical drills of top and bottom drilling blocks, faster to drill through holes.





8. Accurate movement of each axis

X and Y direction

- Transported by high-stiffness rack and pinion, ensures the high precision, stability, smooth running and long service life.



Z direction

- Ball screw rod gives the machine added precision in Z direction.



Servo motor

- The accurate movement of each axis is ensured by the high quality servo motors.
X axis: 0.75kw*2;
Y axis: 0.85kw*3;
Z axis: 0.85kw*3.
- Max travelling speed:
X/U/Y/Z:135/135/75/30m/min



9. Drag chain

- High-quality drag chain used to drag and protect electric wire and air tube during movement of each axis for longer service life.



10. Hand wheel

- Hand wheel makes commissioning more convenient.





11. Min. processing part

- NCB612DX drilling block design and software can do drilling for 30×200m.



12. Bar-code reader

- Read the panel processing information generated by furniture making software, Panel processing can be simply performed by scanning the Bar code, especially suitable for production line.



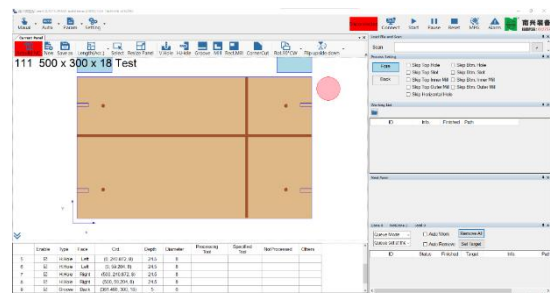
13. IPC

- IPC with Windows 10 operating system.
- 17" DELL display;



14. Multi-function operation

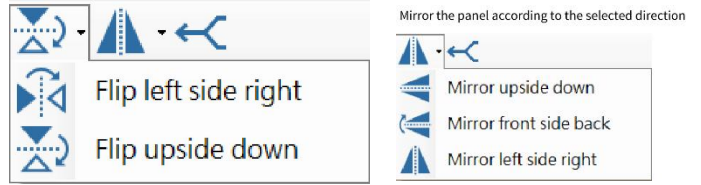
- 3rd Intelligent Control system ,interface is modern and friendly;
- Adopt intelligent AI algorithm to further optimize the processing path; support 2D and 3D simulation;



➤ Full function operation mode. Such as:

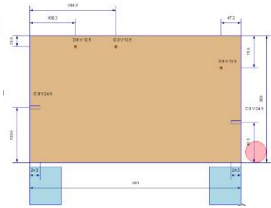
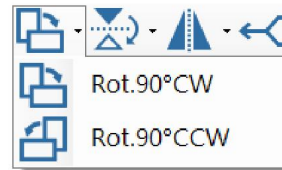


Flip; Mirror;



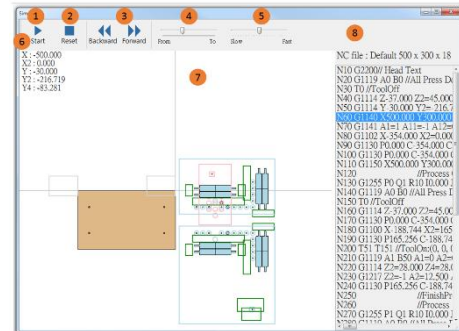
Rotate; Length feature;

• Rotate the panel according to the selected



Simulation;

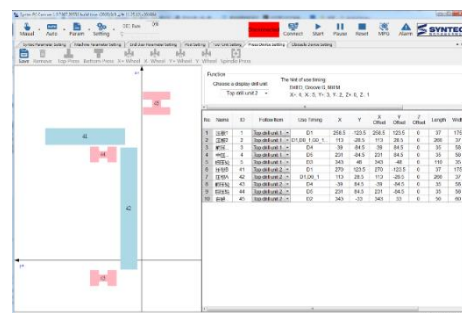
9.6 Drill Machine PC CAM - Auto Mode - Simulation



Couple processing, two panels can be proceed together.



Easy tools setting;



Press device setting;



15. File format support.

- support the file format, such as MPR, DXF, BAN, BPP, PDX; XML; XXL.





Technical Data

Total power	21.93KW	
Machine size	6, 150 * 2,806 * 2,325 mm	
Power supply	380V/50Hz	
Air supply	0.6-0.7MPa	
Total weight	3,750Kg	
Control system	Brand	SYNTEC
Panel size	Length	200-3,000mm
	Width	30-1,200mm
	Thickness	10-60mm
Working range	X axis	3,000mm
	Y axis	1,200mm
	Z axis	70mm
Max. traveling speed	(X/U) axis	135m/min
	Y axis	75m/min
	Z axis	30m/min
Working table	Material	HPL+ steel
	Table size	1,350 X 688
	height	960mm
Transmission mode	X axis	Rack and pinion
	Y axis	Rack and pinion
	Z axis	Ball screw rod
Servo motor	X axis	2*0.75kw
	Y axis	3*0.85kw



	Z axis	3*0.85kw
Boring blocks	Boring block qty	Top 2; Bottom 1
	Vert. drills qty (top)	18*2
	Horiz. drills qty (top)	X: 6×2 + Y: 4×2
	Vert. drills qty (Bottom)	9
	Max drill diameter	Φ35mm
	Drill spacing	32mm
	Rotation speed	4000rpm
	Shank diameter	Φ10mm
Main spindle	qty	ER32
	power	3.5kw×2 max.18000rpm
Dust collector	qty	2
	diameter	Top 200mm×2 Lower 125mm×1
	speed	≥28m/min

**Thanks for the attention!*

The company continuous to improve the product specifications and design details, the specifications are subject to change without notice. 220517