

LC Series

High Speed Automatic Four Six Corners Folder Gluer

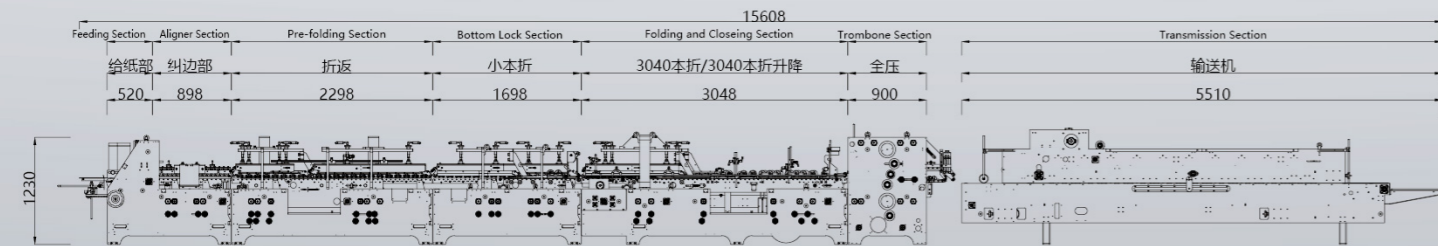
全自动高速四六角糊盒机

多功能 | 高速机

Multi-functional | High Speed



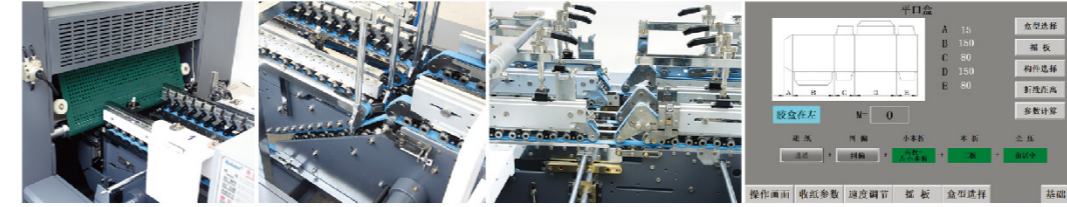
地基图 FOUNDATION DRAWING



选配 Optional

检测 | 清废 | 爬坡 | 智能记忆

Inspection | Waste Stripping | Climbing(hook-less) Structure | Memory Function



▲ 检测
Inspection

▲ 清废
Waste Stripping

▲ 爬坡
Climbing(hook-less)
Structure

▲ 智能记忆
Memory Function

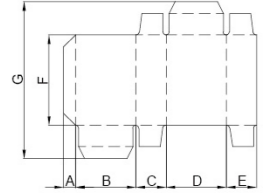
技术参数 TECHNICAL PARAMETERS

型号	MODEL	650	800	1100
纸张材料	Paper material	卡纸Cardboard 210-800gsm, A/B/E瓦楞 A/B/E Flute		
最大速度	Max.Speed	400m/min		
折叠箱厚度	Max.thickness of folded box	12mm		
折盒方式	Way of folding	第一折与第三折为180°与135°, 第二折与第四折为180° Fold 1 and fold 3 are 180° and 135°, fold 2 and fold 4 are 180°		
电源电压	Power supply	3P 380V 50HZ		
最大出纸宽度	Blank width	650mm	800mm	1100mm
长×宽×高	Length×Width×Height	13×1.3×1.3m	15×1.5×1.3m	15×1.8×1.3m
重量	Net Weight	5.5T	6.5T	7.5T
整机功率	Total power	23kw	30kw	30kw

注:数据如有更改,恕不另行通知。(Notes:Data are subject to change without prior notice)

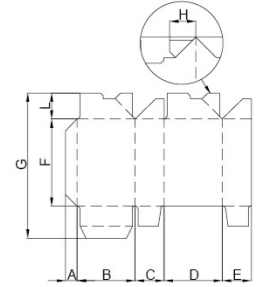
普通盒型 Straight Line Box

型号 Model	650Type	800Type	1100Type
配置规格	本折两板	本折两板	本折两板/三板
Way of folding	Two carriers	Two carriers	Two/three carriers
B+C+D+E	130-650	142-800	110/202-1100
E (Min)	10	10	20
F	50-800	50-800	50-800
G (Max)	800	800	800



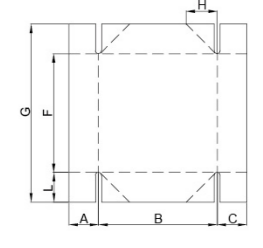
勾底盒型 Straight Line Box

型号 Model	650Type	800Type	1100Type
配置规格	本折两板	本折两板	本折两板/三板
Way of folding	Two carriers	Two carriers	Two/three carriers
B+C+D+E	130-650	142-800	130/202-1100
E (Min)	10	10	20
F	50-800	50-800	50-800
G (Max)	800	800	800
H (Min)	25	25	25
L	30-100	30-100	30-100



四角盒型 4 Corners Box

型号 Model	650Type	800Type	1100Type
配置规格	本折两板	本折两板	本折两板/三板
Way of folding	Two carriers	Two carriers	Two/three carriers
A+B+C	150-450	150-600	150-900
B (Min)	90	90	90
F	70-600	70-600	70-600
G (Max)	800	800	800
H (Min)	25	25	25
L	30-100	30-100	30-100



六角盒型 6 Corners Box

型号 Model	650Type	800Type	1100Type
配置规格	本折两板	本折两板	本折两板/三板
Way of folding	Two carriers	Two carriers	Two/three carriers
A+B+C+D+E	260-450	260-600	260-900
B (Min)	90	90	90
C (Min)	30	30	30
F	70-600	70-600	70-600
G (Max)	800	800	800
H (Min)	25	25	25
L	30-100	30-100	30-100

