

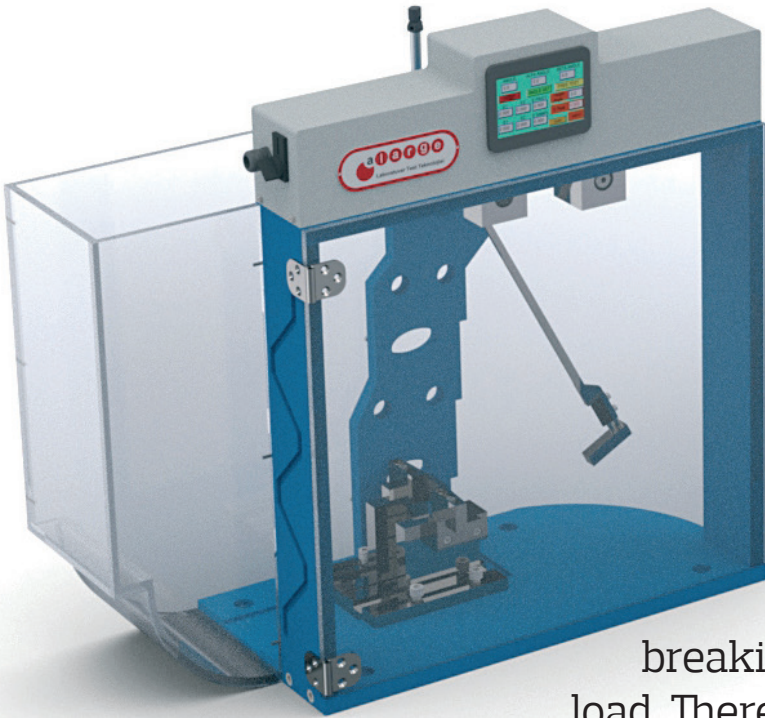


AGILE, ROBUST,
SMART LAB SYSTEM.
SUSTAINABILITY AND RESILIENCE.

PENDULUM IMPACT TEST MACHINE

Standards

ISO 179, ISO 180, ISO 8256,
ASTM D 256, ASTM D 4812



The impact test determines the breaking energy of plastics under dynamic load. There are two different test methods. Izod and Charpy test methods. The Izod impact test specimen is placed vertically while the Charpy test specimen is placed horizontally.

+90 212 924 56 52

www.alarge.com.tr

ALARGE ALIÇ AĞACI MAK. ELEK. AR-GE SAN. TİC. LTD. ŞTİ.

Çifte Havuzlar Mah. Eski Londra Asfaltı Cd. YTÜ Teknopark D2 Blok No: 2B01 Davutpaşa - İstanbul/TÜRKİYE

Fax: +90 212 278 61 33 Mail: info@alarge.com.tr

PENDULUM IMPACT TEST MACHINE

Special design Hammers & Clamps for Izod, Charpy & Tensile Impact Tests

Hammer designs have been tested with dynamic pc simulations compliance with **ISO 179, ASTM E23, ISO 148-1, ASTM A370-NIST** standards.

Hammer Capacities: **1-2-5-15-25-50 J**

Boutique Manufacturing up to 300 J

Fully compatible with all radiuses, masses and impact energy in the standards.

✓ Angle calculation: 1024 up to 10.000 pulse.
Cycle rotary encoder.

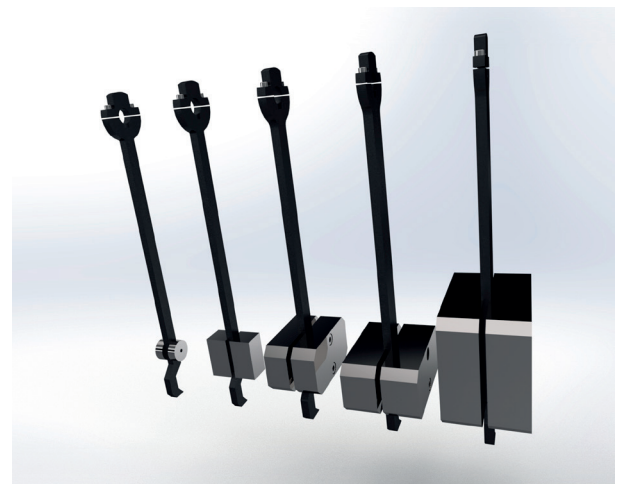
✓ Pneumatic brake system

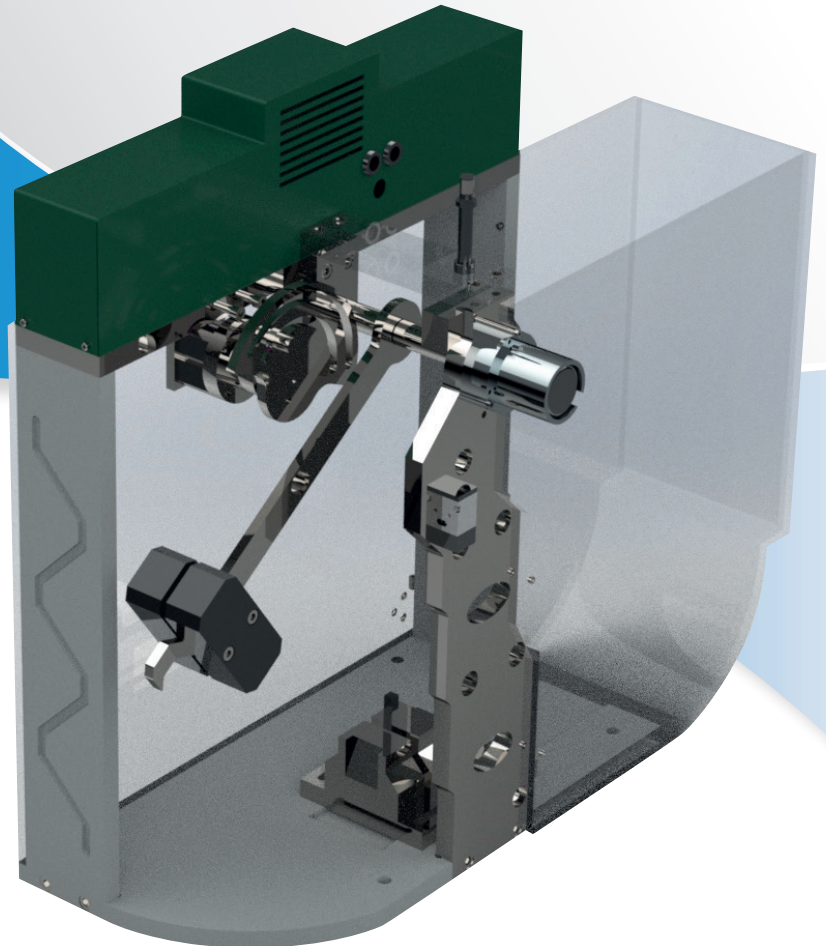
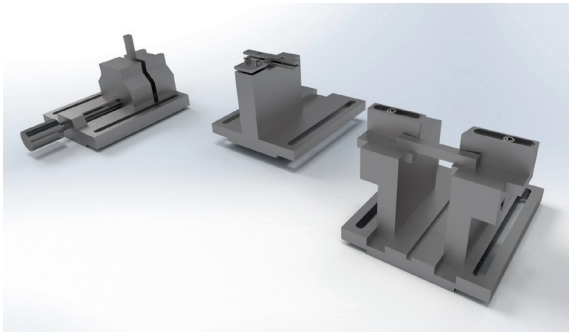
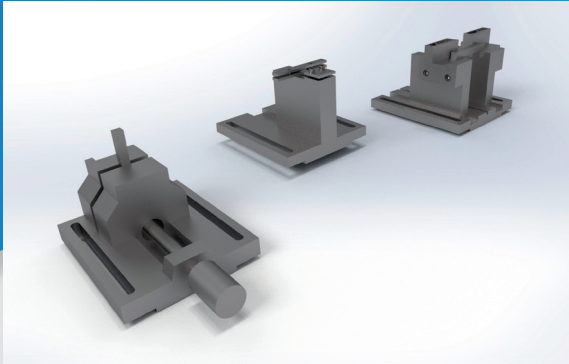
✓ Hammer drop angle

✓ 20 joules = 140°

✓ Angles may vary slightly due to calibration results and hammer weight

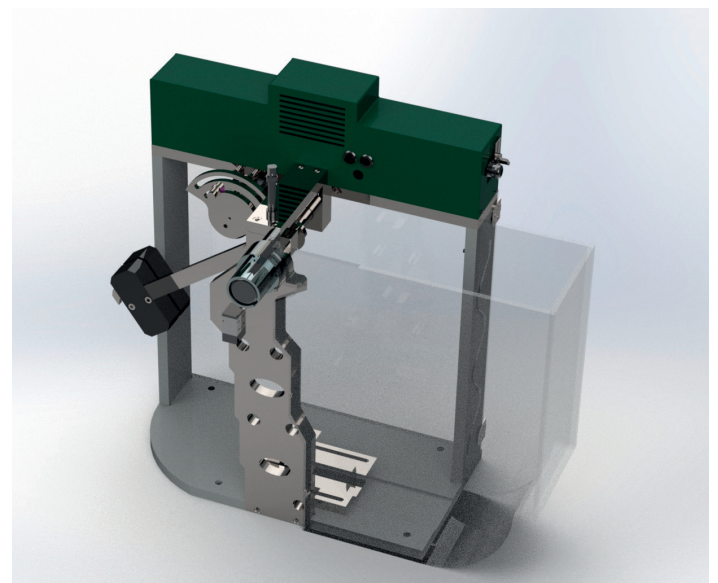
✓ Operating conditions: 10-38 °C. 10-80% moisture, dust and corrosive gas free





- ✓ Digital auto-calibration.
- ✓ Friction free calibration system software
- ✓ Configurations as Izod, Charpy or Izod and Charpy tester.
- ✓ Different hammer sizes available
- ✓ The hammer is designed to strike from the center at an angle

- ✓ Standards: ISO 179, ISO 180, ISO 8256, ASTM D 256, ASTM D 4812
- ✓ 4.3" TFT LED 65536 color touch screen
- ✓ Data transfer option to PC and Alarge Reporting Software via RS 232/480 and ethernet module
- ✓ Real-time angle value display



www.alarge.com.tr

+90 212 924 56 52



PENDULUM IMPACT TEST MACHINE TECHNICAL SPECIFICATIONS

IZOD TYPE		
MODEL NO	AL IZ-5	AL IZ-50
Hammer Capacity	1J, 2J, 5J	15J, 25J, 50J
Pendulum Speed	3.5mv/s	3.5mv/s
Starting Angle	126°	126°
Impact Edge Radius	R=2 mm	R=2 mm
Jaw Length	40 mm	40 mm
Impact cutting edge radius	R=2 mm	R=2 mm
Arm Length	400 mm	400 mm
Impact Edge Radius	16°	16°
Pendulum Momentum	PL(1J) = 0.5155Nm PL(5,5J) = 2.8355N.m	PL(5,15J) = 7.733Nm PL(22J) = 11.3419N.m

CHARPY TYPE		
MODEL NO	AL CH-5	AL CH50
Hammer Capacity	1J, 2J, 5J	15J, 25J, 50J
Pendulum Speed	2.9 m/s	3.5 m/s
Starting Angle	90°	126°
Arm Length	400mm	400mm
Impact Knife Radius	16°	16°
Impact Edge Radius	R=2mm	R=2mm
Jaw Length	40 mm	40 mm
Pendulum Momentum	PL (1J) = 0.5155 Nm PL (5J) = 2.578 Nm	PL (15J) = 7.733 Nm PL (25J) = 12.889 Nm PL (50J) = 25.777 Nm

Usage Identity:
Load hanging
easy, fully
automatic load
lifting and self
calibration.

Available ✓ Optional □ Not Applicable ✗

Technical Identity:

Able to exceed the free 80 oscillation given in the standard, energy at standard angles, hammer tip design according to standards, self-calibrating software.

