

# mtm

**Masood Textile Mills**



**Masood Textile Mills Ltd.**

[www.masoodtextile.com](http://www.masoodtextile.com)

# Masood Textile Garment Exports at a Glance

## CALIFORNIA, USA

Pacific Textiles & Sourcing Inc.  
Import services, Domestic services  
and warehousing operations

## JORDAN: (Duty free for US & Canada)

Strategic Alliance with Jordan  
factories to ship synthetic  
products. Duty free advantage  
to US customers

## PAKISTAN: (Duty free for EU)

Vertical Cotton rich & Synthetic knit  
fabric Set ups. Duty free advantage to  
EU

## CHINA:

Innovation PD Center in  
Shenzhen City. Easy  
access to customer due  
to geographical location

STRATEGIC  
LOCATIONS &  
ADVANTAGES

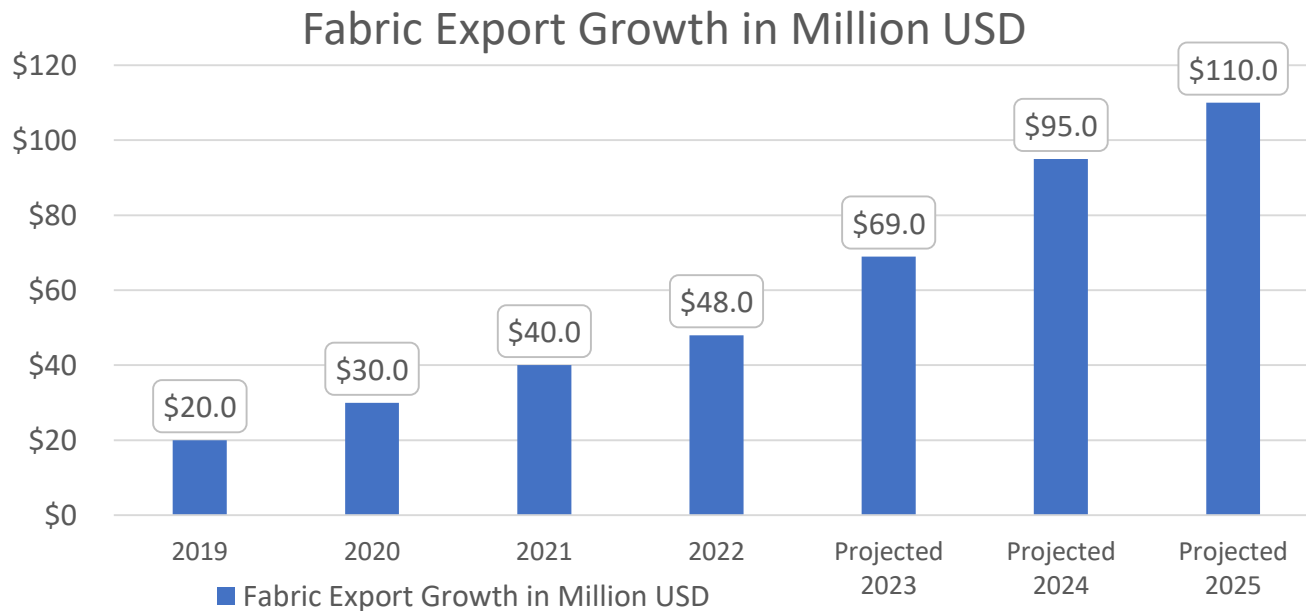
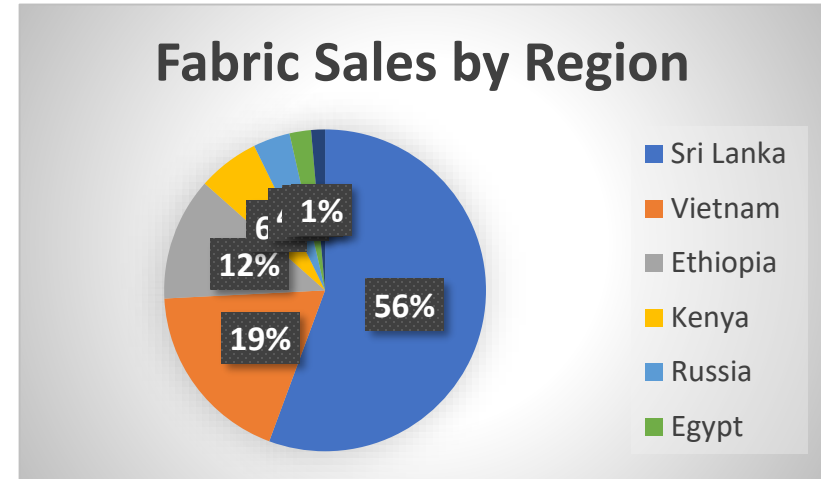


## GROWTH PATH



# Masood Textile Mills Fabric Export at a Glance

- **Fabric exports** turnover US\$48M. Dedicated 30% capacity of mills for Fabric export.
- **KEY Fabric Customers:** M&S, PVH (MK, TH, CK), NIKE, FOTL, TCP, Gloria Jeans.
- Masood as ONE STOP solution for Textile buyers (Vertical integrated Fabric mill including: in-house fiber dyeing, spinning, knitting, dyeing, yarn dyeing, printing & embroidery).
- Our basic values are Trust, Integrity and Respect.
- Worldwide presence with it's marketing and design support.

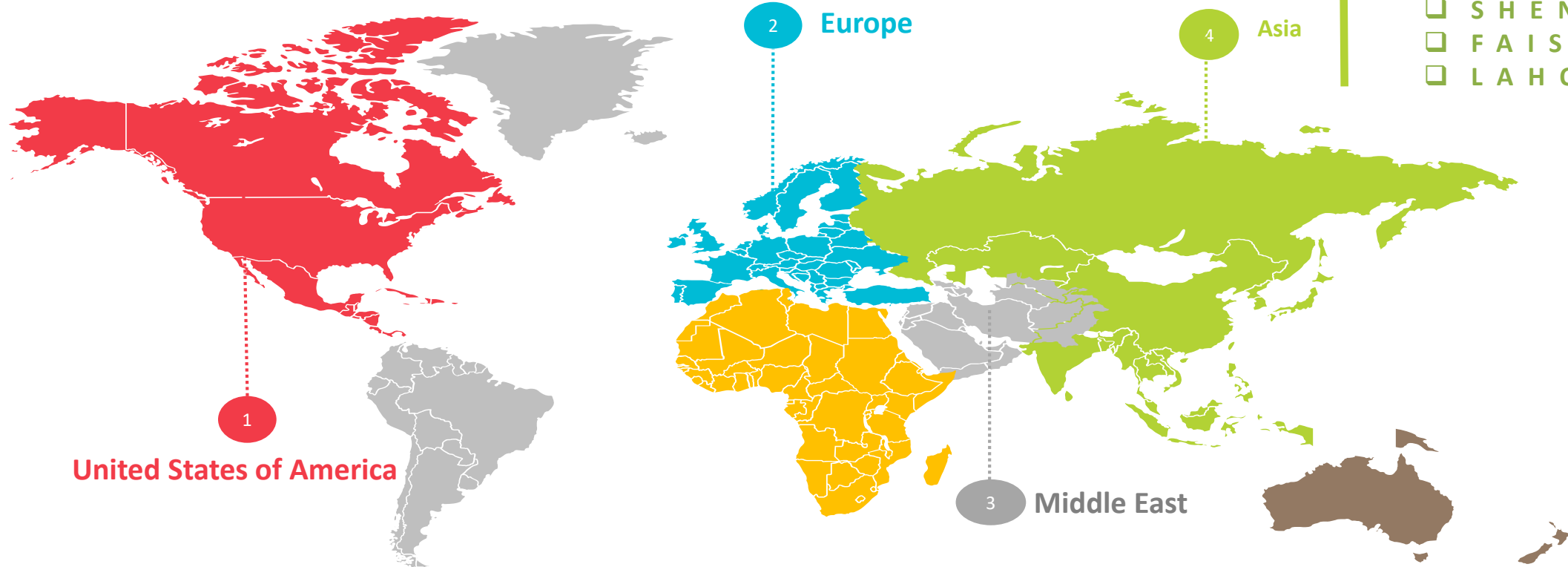


### Competitive Transit Timelines:

	TRANSIT SEA/Road
• Sri Lanka	05 to 06 days.
• Kenya	09 to 10 days.
• Vietnam	14 to 18 days.
• Jordan	14 to 16 days
• Ethiopia	14 to 16 days.
• Indonesia	14 to 18 days.
• Egypt	14 to 16 days
• Bangladesh	18 to 22 days.
• Russia	27 to 30 days.
• Kazakhstan	15 to 25 days (by road)

# Why Masood Textile Mills

## GLOBAL PRESENCE — Design & Marketing Support



- ASIA**
- H O N G K O N G
  - S H E N Z H E N
  - F A I S A L A B A D
  - L A H O R E

### UNITED STATES OF AMERICA

- DALLAS
- NEW YORK
- LOS ANGELES

### MIDDLE EAST

- DUBAI (UAE)
- AMMAN (Jordan)

### EUROPE

- A M S T E R D A M



# Masood Textile Mills Key Customer / Brands



# Masood Textile Capacities



Spinning Division is capable of producing 62,500 lbs. of Ring spun & OE yarn every day both 100% cotton and cotton/poly blend in Mélanges.



The Processing Plant has capacity of dyeing over 240,000 lbs. per day 100% cotton, Poly-cotton blend and 100% Polyester fabrics.



Masood recently established its garment laundry division and Equipment support to handles 39,000 Pcs per day.



Plant provide the facility to dye the loose fiber, sewing thread, elastic and raw yarn. Plant has capacity to dye the 29,600 lbs. per day.



7 cutting units are working which are fully equipped with latest machinery like Gerber Plotter, Auto Spreader, Band Knife, Bierrebi cutting machine.



Automated Embroidery machines are producing per day 21,500 Pcs and Printing (digital/screen/laser) support to print 100,000 Pcs per day.



Knitting equipment are capable of making Jersey, Pique, Fleece, Interlock and Rib etc. Daily knitting capacity of 256,000 lbs.



With over 6,100 stitching machines are working which manned with the most skilled and expert operators. Per day output is 336,000.



Elastic plant is capable of making wide range of jacquard logo and plain elastic. Plant has capacity to make 4.5 million yard per month



# Vertical Integration Spinning

- Producing mélange / sustainable / fancy yarns.
- Yarn counts ranging from **8/1** to **40/1**.
- Spinning having **56,000 installed spindles**.
- **Mélange categories** include heathers, Marl, injection slubs, chain yarns, fancy yarns, snow yarns, nep yarns, Vario Yarns.



# Vertical Integration Spinning (Recycled Open End Yarn)

- Masood has recently Established State of the Art Spinning Mill for **Open End Yarn** which has already Started its Production.
- Masood's Mission is Sustainable Organic Growth, we follow United Nations **SDGs**.
- Experienced and Proactive setup to ensure uninterrupted sourcing & supply of Recycled raw materials of first quality.





# Vertical Integration Knitting

- **Single knits:** Cotton & blended  
Jersey, Fleece, PQ, Spandex – **70%**
- **Double Knits:** Interlock, RIB, Waffle -  
**20%**
- **Others knits:** **10%**
- **1,050 knitting machines** of European  
& Japanese origin.



# Vertical Integration Dyeing & Finishing

- Fabric routes include open, tubular and body-size.
- Fabric Equipment from leading brands:
  - Dyeing: CPB: BATUMAK / Exhaust: SCLAVUS, THIES, HISAKA
  - Slitting: BIANCO, Corrino
  - Stretchers: Santex
  - Dryers: Santex
  - Stenters: Bruckner, Monforts, Santex
  - Compactors: Ferraro, Navis Tubetex
  - Raising: Gessner, LaFer
  - Peaching: Gessner, Lamperti





## Vertical Integration - Printing

- Rotary Printing (Reggiani) Capacity **260 tons** / month.
- 8 colors / Maximum width 72" Repeat: 25", 32", 36"
- Capable of Printing Reactive, Pigment & Discharge.
- Digital print (Reggiani) capacity **50 tons** / month.





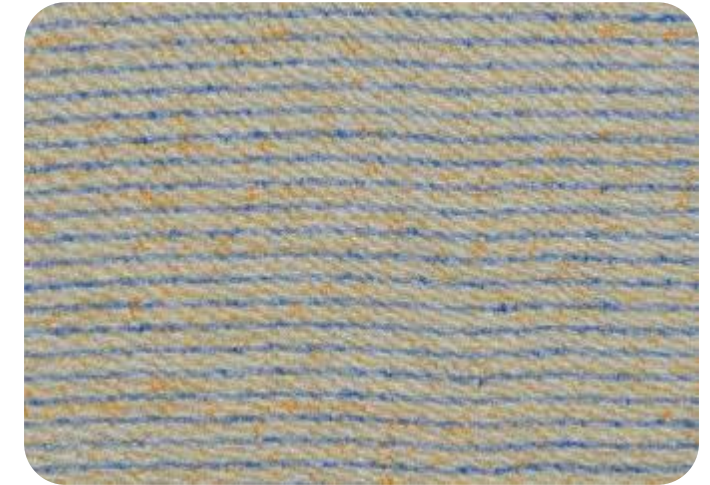
## Single Knits

- Single Jersey
- Heavy Jersey
- Double Jersey
- Textured Jersey
- Sueded Jersey
- Single / Double Lacoste Pique
- Honey Combed Pique
- Bird Eye Pique
- Pique Jersey
- Textured Pique
- 2 - Thread Fleece & Terry
- 3 - Thread Fleece & Terry
- Sueded Fleece & Terry
- Herring Bone Terry
- Pique Fleece



## Double Knits

- Interlock
- Sueded Interlock
- Drop Needle Interlock
- Rib 1x1
- Rib 2x2
- Variegated Rib
- Flat Back Rib
- Box Waffle
- Mini Thermal
- Rice Thermal
- Pointel Rib
- Flat Back Waffle





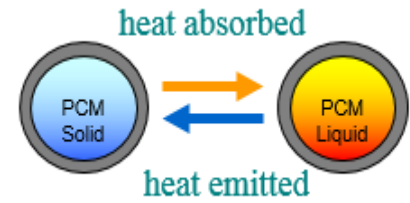
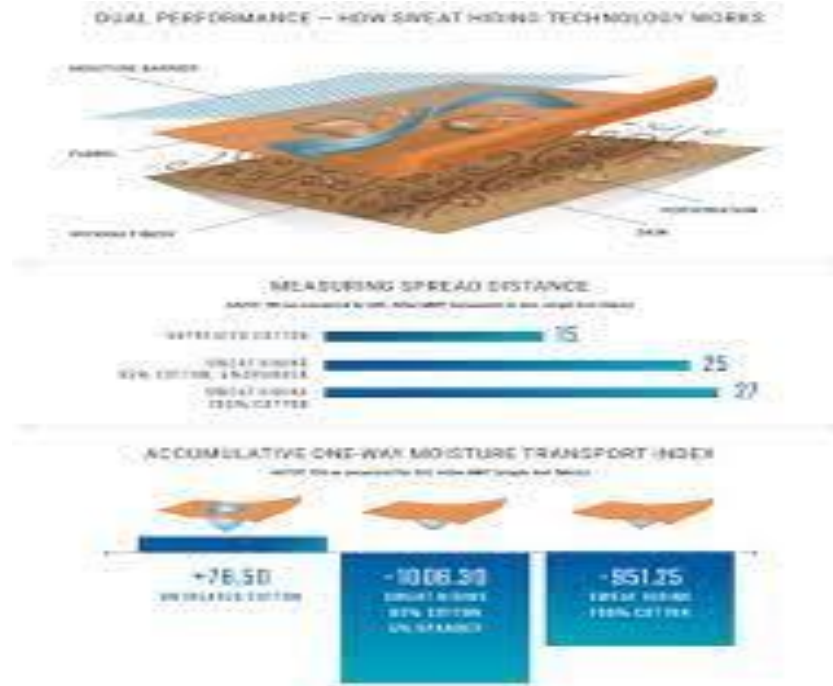
# Research & Development – Mélange / Fancy Yarns

- Beacon Impex has a strong focus on research and development of fibers and fabrics in the following areas:
  - Sustainable fabrics
  - Novelty fibers
  - Innovative fabric structures
  - Performance chemical applications
- Beacon's design team in US and Amsterdam provide seasonal fabric trends which become the base of the research and development.



# Research & Development - Performance Fibers

- Moisture Management
- Wicking Window
- Trans Dry / Charge Cotton
- Antimicrobial Silver Technology
- Stain Release with Performance
- Water Repellant with Performance
- Thermo Chromic
- Photo Chromic
- PCM Technology
- 3XDry Finish
- Cold Black
- Nano Sphere
- Mosquito Repellant



Thermo-Chromic



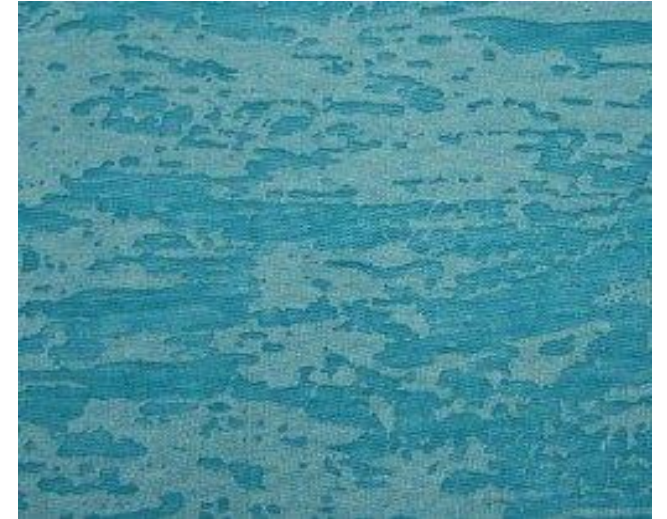
Photo Chromic





# Research & Development - Performance Fabrics (Dyeing and Printed)

- Over Dyeing of Mélange
- Single Portion Dyeing for Mélange Effect
- Fluorescent Dyeing
- Burn Out Printing
- Fluorescent Printing
- Magic Printing
- Glitter Printing
- Reactive / Disperse Printing
- Pigment Printing
- Glow in Dark Printing



# TEXTILE RECYCLING

Finished Product





# Masood Textile Global Certifications



## SUSTAINABLE MASOOD

### Claimed Raw Material

**BCI:** 15% Production is BCI based in 2019 and planned to grow 19% by 2020

**Recycled Poly:** Plan to ship 50 tons of recycled poly in 2020 & 21

In-House Textile Recycling plant producing recycled cotton from textile wastes. Capacity to produce 10,000 lbs per day.

### Certifications/Membership

- Global Organic Textile (GOTS 5.0)
- Organic Content Standard (OCS 2.0)
- Better Cotton Initiative (BCI)
- Global Recycled Standard (GRS 4.0)
- Recycled Claim Standard (RCS 2.0)
- Oeko Tex 100
- WRAP: Worldwide Responsible for
- Global Security Verification (GSV)
- Supply Chain Security (SCS)
- Business Social Compliance Initiative (BSCI)

### GHG's, Energy & Water

Masood is getting into adoption of renewable energy, driving energy and water efficiency in supply chain

-Reduced 2.4% Water through Modern dyeing equipment

-Effluent Treatment plant.. Producing 225 cubic meter/hour.

-Steam Generation through waste heat recovery system, producing approx. 2700 tons monthly

-Promoting LED Lighting Technology, Saving 3,034 MWh annually

-Energy Saving Motor Equipment, saving 943 MWh annually

### Chemical Management

Masood is supporting ZDHC goal and align with green chemistry initiatives

- Working with Chemical and Dye stuff suppliers who are registered with ZHDC.

- Aligned with suppliers who are following Green Chemistry

### Social Responsibility

Masood is committed on CSR (Corporate Social Responsibility Initiatives) and working to uplift lives & community.

-Health Support through Trust Hospital (Rabia Trust)

-Educational Support to less privileged areas (The Citizen Foundation School)

-Internship Programs for Graduates

-Empowering Women, current 15% strength expected to grow to 17% by 2020

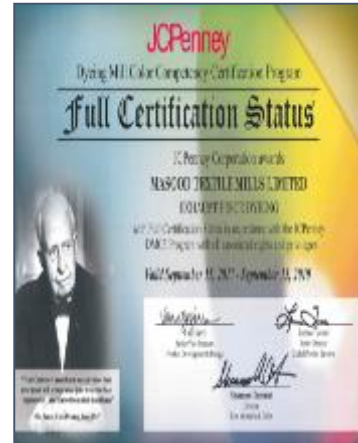
-Benefits for Associates, Gratuity, EOBI, Social Security, Health Insurance, Life Insurance, Transportation, Subsidized meals etc.



# Masood Textile LAB Certifications

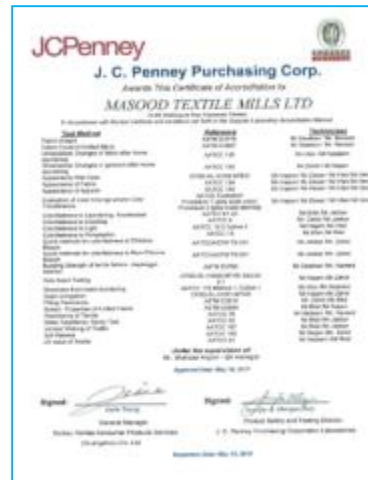
## COLOR Accreditations:

- Adidas
- JC Penney
- PVH
- Wal-Mart



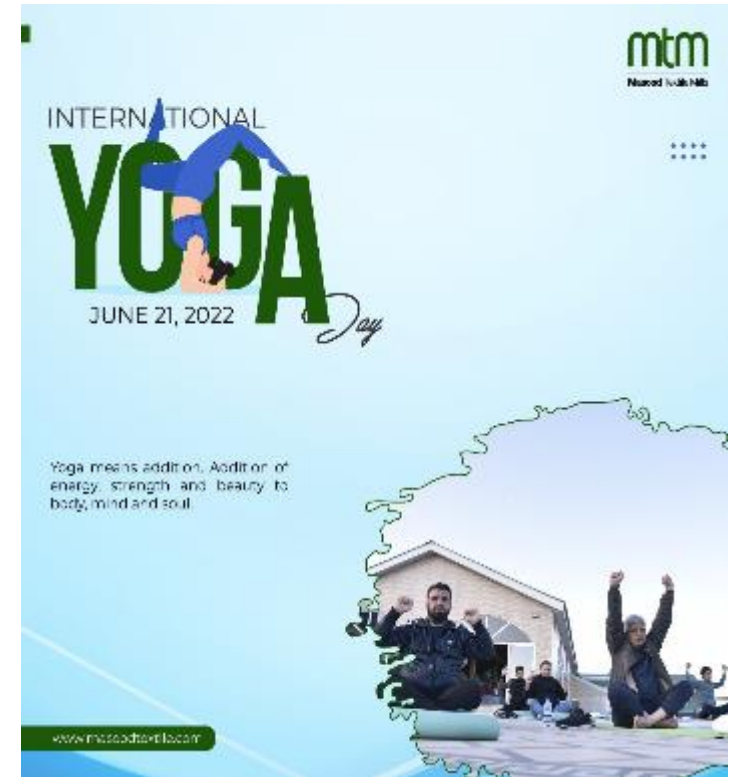
## TESTING Accreditations:

- JC Penney
- Levi's
- PVH
- Wal-Mart



## Corporate Social Responsibility:

Masood has a track record for being socially responsible and keep on taking all steps to position itself on highest level of socially responsible and sustainable companies. Social uplift of Women, Marriage Grants, Free transportation, subsidized meals, health insurance, Training & development, Water treatment plant. Bio Mass, Energy savings, natural light sources, Recycling, Better Cotton and so on.





# mtm

## Masood Textile Mills

# THANK YOU

**Shabir Ahmad Abid**

Head of Yarn & Fabric Marketing

☎ / 📞 : +92-300-8665284

✉ [shabirabid@masoodtextile.com](mailto:shabirabid@masoodtextile.com)

### OFFICES

📍 32-KM Sheikhpura Road,  
Faisalabad

📍 17/1 New Civil Lines Bilal Road,  
Faisalabad

📍 Masood Textile Mills Ltd  
Opposite US Apparel  
Defense Road Lahore.

📍 Office # 306-307 Gul Tower  
3rd Floor I.I Chundrigar Road  
Karachi



[www.masoodtextile.com](http://www.masoodtextile.com)

mtm

Masood Textile Mills

