

SEJOY®

Drug of Abuse Testing CE



Sejoy Biomedical Co., Ltd.

Add : Area C, Building 2, No.365, Wuzhou Road, Yuhang Economic Development Zone, Hangzhou City, 311100, Zhejiang, China



poct@sejoy.com



0571-81957782



www.sejoy.com

Urine Test



Product features:

- High quality & easy-to-use.
- Quick result: 3-8 minutes.
- Little or no additional equipment required.
- More economical than ELISAs in low throughput Labs.
- Possibility to store at room temperature for extended length of time.

66 Kinds Of Drug Of Abuse Tests(Urine)

	Test	Specimen	Format	Cut-Off	CE Status
1	AB-PINACA (ABP(K2+))	Urine	Cassette/Panel/Dipstick	10ng/mL	CE
2	Acetaminophen (ACE)	Urine	Cassette/Panel/Dipstick	5000ng/mL	CE
3	7-Aminoclonazepam (ACL)	Urine	Cassette/Panel/Dipstick	(100/300) ng/mL	CE
4	Alcohol (ALC)	Urine	Cassette/Panel/Dipstick	0.02%	CE
5	Alprazolam (ALP)	Urine	Cassette/Panel/Dipstick	100ng/mL	CE
6	Amphetamine (AMP)	Urine	Cassette/Panel/Dipstick	(300/500/1000) ng/mL	CE
7	Aripiprazole (APP)	Urine	Cassette/Panel/Dipstick	5000ng/mL	CE
8	α -Pyrrolidinovalerophenone (α -PVP)	Urine	Cassette/Panel/Dipstick	(300/500/1000) ng/mL	CE
9	Barbiturate (BAR)	Urine	Cassette/Panel/Dipstick	(200/300) ng/mL	CE
10	Buprenorphine (BUP)	Urine	Cassette/Panel/Dipstick	(5/10) ng/mL	CE
11	Benzodiazepines (BZO)	Urine	Cassette/Panel/Dipstick	(100/200/300) ng/mL	CE
12	Cathine (CAT)	Urine	Cassette/Panel/Dipstick	150ng/mL	CE
13	Caffeine(CAF)	Urine	Cassette/Panel/Dipstick	1000ng/mL	CE
14	Carisoprodol (CAR)	Urine	Cassette/Panel/Dipstick	1000ng/mL	CE
15	Cannabinol (CNB)	Urine	Cassette/Panel/Dipstick	500ng/mL	CE
16	Clonazepam (CLO)	Urine	Cassette/Panel/Dipstick	(150/400) ng/mL	CE
17	Clozapine (CLZ)	Urine	Cassette/Panel/Dipstick	5000ng/mL	CE
18	Cocaine (COC)	Urine	Cassette/Panel/Dipstick	(100/150/200/300) ng/mL	CE

Test	Specimen	Format	Cut-Off	CE Status
19 Codeine (COD)	Urine	Cassette/Panel/Dipstick	300ng/mL	CE
20 Cotinine (COT)	Urine	Cassette/Panel/Dipstick	(10/50/100/200/500) ng/mL	CE
21 Carfentanyl (CFYL)	Urine	Cassette/Panel/Dipstick	(250/500) ng/mL	CE
22 Diazepam (DIA)	Urine	Cassette/Panel/Dipstick	300ng/mL	CE
23 Ethylenediamine-dimethylphosphinic acid (EDDP)	Urine	Cassette/Panel/Dipstick	(100/300) ng/mL	CE
24 Ethyl Glucuronide (ETG)	Urine	Cassette/Panel/Dipstick	(500/1000) ng/mL	CE
25 Fluoxetine (FLX)	Urine	Cassette/Panel/Dipstick	500ng/mL	CE
26 Fentanyl (FYL)	Urine	Cassette/Panel/Dipstick	(10/20/200) ng/mL	CE
27 Gabapentin (GAB)	Urine	Cassette/Panel/Dipstick	2000ng/mL	CE
28 γ -Hydroxybutyric acid (GHB)	Urine	Cassette/Panel/Dipstick	10 μ g/mL	CE
29 Hydromorphone (HMO)	Urine	Cassette/Panel/Dipstick	300ng/mL	CE
30 Hydrocodone (HYC)	Urine	Cassette/Panel/Dipstick	300ng/mL	CE
31 Ketamine (KET)	Urine	Cassette/Panel/Dipstick	(500/1000) ng/mL	CE
32 Lysergic Acid Diethylamide (LSD)	Urine	Cassette/Panel/Dipstick	(10/20/50) ng/mL	CE
33 6-Monoacetylmorhoine (6-MAM)	Urine	Cassette/Panel/Dipstick	10ng/mL	CE
34 Methcathinone (MCAT)	Urine	Cassette/Panel/Dipstick	(500/1000) ng/mL	CE
35 Ecstasy (MDMA)	Urine	Cassette/Panel/Dipstick	(300/500/1000) ng/mL	CE
36 Tenamfetamine (MDA)	Urine	Cassette/Panel/Dipstick	500ng/mL	CE
37 Methylenedioxypyrovalerone (MDPV)	Urine	Cassette/Panel/Dipstick	(300/500/1000) ng/mL	CE
38 Methamphetamine (MET)	Urine	Cassette/Panel/Dipstick	(300/500/1000) ng/mL	CE
39 Mephedrone HCl (MEP)	Urine	Cassette/Panel/Dipstick	100ng/mL	CE
40 Mescaline (MES)	Urine	Cassette/Panel/Dipstick	(100/300) ng/mL	CE
41 Morphine (MOP)	Urine	Cassette/Panel/Dipstick	(100/200/300) ng/mL	CE
42 Methylphenidate (MPD)	Urine	Cassette/Panel/Dipstick	(300/1000) ng/mL	CE
43 Meperidine (MPRD)	Urine	Cassette/Panel/Dipstick	100ng/mL	CE
44 Methaqualone (MQL)	Urine	Cassette/Panel/Dipstick	300ng/mL	CE
45 Methadone (MTD)	Urine	Cassette/Panel/Dipstick	(200/300) ng/mL	CE
46 Opiates (OPI)	Urine	Cassette/Panel/Dipstick	(300/2000) ng/mL	CE
47 Oxycodone (OXY)	Urine	Cassette/Panel/Dipstick	100ng/mL	CE
48 Olanzapine (OZP)	Urine	Cassette/Panel/Dipstick	1000ng/mL	CE
49 Phencyclidine (PCP)	Urine	Cassette/Panel/Dipstick	25ng/mL	CE
50 Pregabalin (PGB)	Urine	Cassette/Panel/Dipstick	(500/700/2000) ng/mL 50 μ g/mL	CE
51 Propoxyphene (PPX)	Urine	Cassette/Panel/Dipstick	300ng/mL	CE
52 Quetiapine (QTP)	Urine	Cassette/Panel/Dipstick	750 ng/mL	CE
53 Risperidone (RPD)	Urine	Cassette/Panel/Dipstick	500ng/mL	CE
54 Synthetic Marijuana (K2)	Urine	Cassette/Panel/Dipstick	(30/50/200) ng/mL	CE
55 Kratom (KRA)	Urine	Cassette/Panel/Dipstick	100 ng/mL	CE

	Test	Specimen	Format	Cut-Off	CE Status
56	Tilidine (TLD)	Urine	Cassette/Panel/Dipstick	50ng/mL	CE
57	Tricyclic Antidepressants (TCA)	Urine	Cassette/Panel/Dipstick	(500/1000) ng/mL	CE
58	Marijuana (THC)	Urine	Cassette/Panel/Dipstick	(20/25/50/150/300) ng/mL	CE
59	Tramadol (TML/TRA)	Urine	Cassette/Panel/Dipstick	(100/200/300) ng/mL	CE
60	Tropicamide (TRO)	Urine	Cassette/Panel/Dipstick	350ng/mL	CE
61	Trazodone (TZD)	Urine	Cassette/Panel/Dipstick	200ng/mL	CE
62	UR-144 (UR-144)	Urine	Cassette/Panel/Dipstick	25ng/mL	CE
63	Zaleplon (ZAL)	Urine	Cassette/Panel/Dipstick	100ng/mL	CE
64	Zolpidem (ZOL)	Urine	Cassette/Panel/Dipstick	50ng/mL	CE
65	Zopiclone (ZOP)	Urine	Cassette/Panel/Dipstick	50ng/mL	CE
66	Xylazine (Xyl)	Urine	Cassette/Panel/Dipstick	1000ng/mL	CE

Multi-Drug 2-12 Drugs Rapid Test Cassette

	Test	Specimen	Format	Cut-Off	CE Status
1	COC300/THC50	Urine	Cassette	Ref: Analytes	CE
2	BZO300/BAR300	Urine	Cassette	Ref: Analytes	CE
3	MET1000/THC50	Urine	Cassette	Ref: Analytes	CE
4	MET1000/MOP300	Urine	Cassette	Ref: Analytes	CE
5	MOP300/THC50	Urine	Cassette	Ref: Analytes	CE
6	AMP1000/MOP300	Urine	Cassette	Ref: Analytes	CE
7	BZO300/MTD300	Urine	Cassette	Ref: Analytes	CE
8	MOP300/BZO300	Urine	Cassette	Ref: Analytes	CE
9	AMP1000/OPI2000	Urine	Cassette	Ref: Analytes	CE
10	OPI2000/BZO300	Urine	Cassette	Ref: Analytes	CE
11	PCP25/AMP1000	Urine	Cassette	Ref: Analytes	CE
12	MET1000/OPI2000/PCP25	Urine	Cassette	Ref: Analytes	CE
13	MET300/COC300/THC50)	Urine	Cassette	Ref: Analytes	CE
14	MET1000/COC300/THC50	Urine	Cassette	Ref: Analytes	CE
15	AMP1000/COC300/THC50	Urine	Cassette	Ref: Analytes	CE
16	BZO300/TCA1000/BAR300	Urine	Cassette	Ref: Analytes	CE
17	MDMA500/MTD300/MOP300	Urine	Cassette	Ref: Analytes	CE
18	BZO300/TCA1000/BAR300	Urine	Cassette	Ref: Analytes	CE

Adulteration

Specimen	Format	Analytes	CE Status
Urine	Dipstick	OX, NIT, SG, GLU, pH, CRE	CE

Multi-Drug 2-12 Drugs Rapid Test Panel

Specimen	Format	Analytes	CE Status
Urine	Panel	Ref: Analytes	CE

Multi-Drug 2-15 Drugs Rapid Test 1-Step Cup

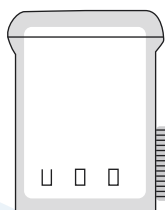
Specimen	Format	Analytes	CE Status
Urine	Cup	Ref: Analytes	CE

Multi-Drug 2-12 Drugs Rapid Test 2-Step Cup

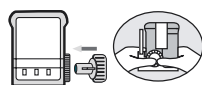
Specimen	Format	Analytes	CE Status
Urine	Cup	Ref: Analytes	CE

Easy testing procedure

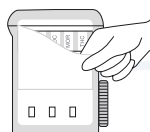
1-step cup



1



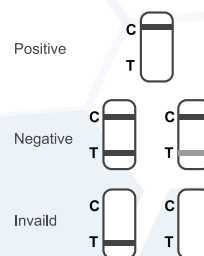
2



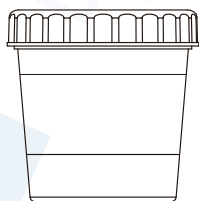
3



1. Take the security key and push the key into the hole of the container to start the test.
2. Remove the label where the results appear.
3. After 5 minutes, interpret the results.



2-step cup



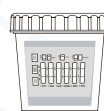
1



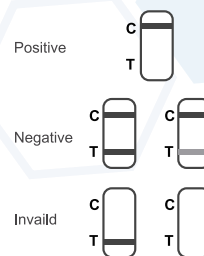
2



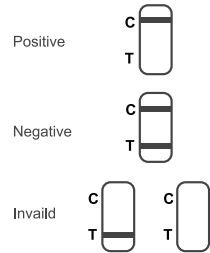
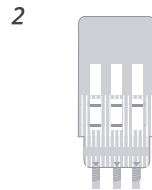
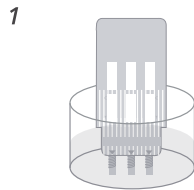
3



1. The urine sample should be emptied directly into the glass test.
2. Peel off the label of the test cup to reveal the result.
3. After collecting the sample, it must be properly closed the lid of the test beaker. Read results in 5 minutes.

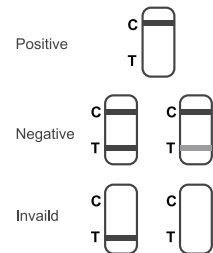
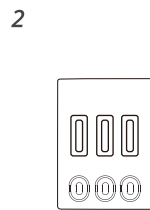
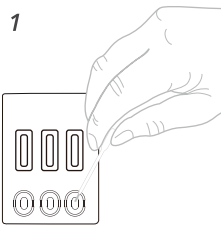
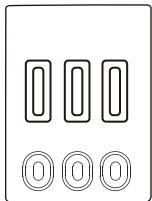


Panel



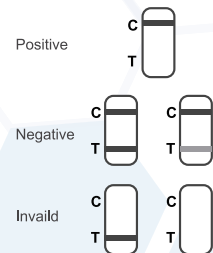
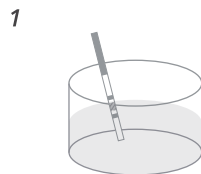
1. Insert the panel in the urine bottle.
2. Read the results after 5 minutes.

Cassette



1. Deposit the sample in the well using the dropper included.
2. Read the results after 5 minutes.

Dipstick



1. Introduce the strip to the urine sample by 10-15 seconds.
2. Read the results after 5 minutes.

Saliva Test

Product features:

- High quality & easy-to-use.
- Quick result: 5 minutes.
- Little or no additional equipment required.
- More economical than ELISAs in low throughput Labs.
- Possibility to store at room temperature for extended length of time.



29 Kinds Of Drug Of Abuse Tests(Saliva)

	Test	Specimen	Format	Cut-Off	CE Status
1	Amphetamine (AMP)	Saliva	Cassette/Panel/Dipstick	(25/50) ng/mL	CE
2	Alcohol (ALC)	Saliva	Cassette/Panel/Dipstick	0.02%	CE
3	α-Pyrrolidinovalerophenone (α-PVP)	Saliva	Cassette/Panel/Dipstick	300ng/mL	CE
4	Barbiturate (BAR)	Saliva	Cassette/Panel/Dipstick	(50/300)ng/mL	CE
5	Buprenorphine (BUP)	Saliva	Cassette/Panel/Dipstick	(5/10) ng/mL	CE
6	Benzodiazepines (BZO)	Saliva	Cassette/Panel/Dipstick	(20/30/50/300)ng/mL	CE
7	Carfentanyl (CFYL)	Saliva	Cassette/Panel/Dipstick	50ng/mL	CE
8	Cocaine (COC)	Saliva	Cassette/Panel/Dipstick	(20/30/50) ng/mL	CE
9	Cotinine (COT)	Saliva	Cassette/Panel/Dipstick	(20/50) ng/mL	CE
10	Ethylendiamine-dimethylphosphinic acid (EDDP)	Saliva	Cassette/Panel/Dipstick	100ng/mL	CE
11	Fentanyl (FYL)	Saliva	Cassette/Panel/Dipstick	(20/50) ng/mL	CE
12	Ketamine (KET)	Saliva	Cassette/Panel/Dipstick	(50/100) ng/mL	CE
13	Lysergic Acid Diethylamide (LSD)	Saliva	Cassette/Panel/Dipstick	(10/20/50) ng/mL	CE
14	6-Monoacetylmorhoino (6-MAM)	Saliva	Cassette/Panel/Dipstick	10ng/mL	CE
15	Ecstasy (MDMA)	Saliva	Cassette/Panel/Dipstick	50ng/mL	CE
16	Methylenedioxypropyvalerone (MDPV)	Saliva	Cassette/Panel/Dipstick	300ng/mL	CE
17	Methamphetamine (MET)	Saliva	Cassette/Panel/Dipstick	50ng/mL	CE
18	Morphine (MOP)	Saliva	Cassette/Panel/Dipstick	(15/40) ng/mL	CE
19	Methaqualone (MQL)	Saliva	Cassette/Panel/Dipstick	300ng/mL	CE
20	Methadone (MTD)	Saliva	Cassette/Panel/Dipstick	(30/150) ng/mL	CE
21	Opiates (OPI)	Saliva	Cassette/Panel/Dipstick	40ng/mL	CE
22	Oxycodone (OXY)	Saliva	Cassette/Panel/Dipstick	(20/50) ng/mL	CE
23	Phencyclidine (PCP)	Saliva	Cassette/Panel/Dipstick	10ng/mL	CE
24	Pregabalin (PGB)	Saliva	Cassette/Panel/Dipstick	50ng/mL	CE
25	Propoxyphene (PPX)	Saliva	Cassette/Panel/Dipstick	300ng/mL	CE
26	Synthetic Marijuana (K2)	Saliva	Cassette/Panel/Dipstick	25ng/mL	CE
27	Marijuana (THC)	Saliva	Cassette/Panel/Dipstick	(12/20/50/200) ng/mL	CE
28	Tramadol (TML/TRA)	Saliva	Cassette/Panel/Dipstick	30ng/mL	CE
29	Zopiclone (ZOP)	Saliva	Cassette/Panel/Dipstick	20 ng/mL	CE

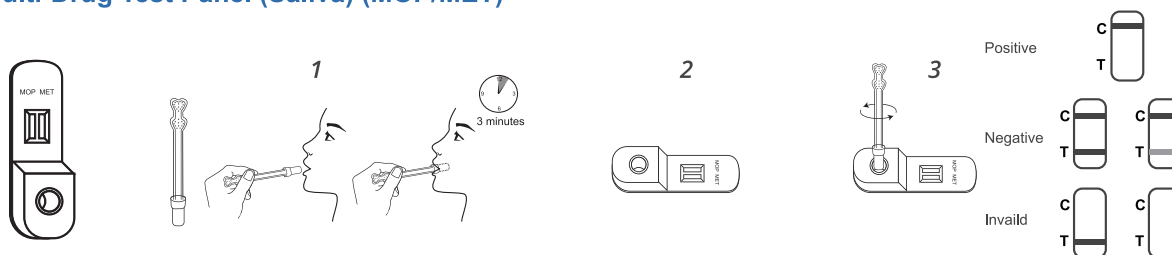
Multi-Drug 2-6 Drugs Rapid Test Cassette

	Test	Specimen	Format	Cut-Off	CE Status
1	(COC20/THC30/MET50)	Saliva	Cassette	Ref: Analytes	CE
2	(THC30/OPI40/AMP50)+<COC20>	Saliva	Cassette	Ref: Analytes	CE
3	(COC20/MET50/BZO20)+<THC100>	Saliva	Cassette	Ref: Analytes	CE
4	(COC20/MET50)+(THC12/OPI40/AMP50)	Saliva	Cassette	Ref: Analytes	CE

Easy testing procedure

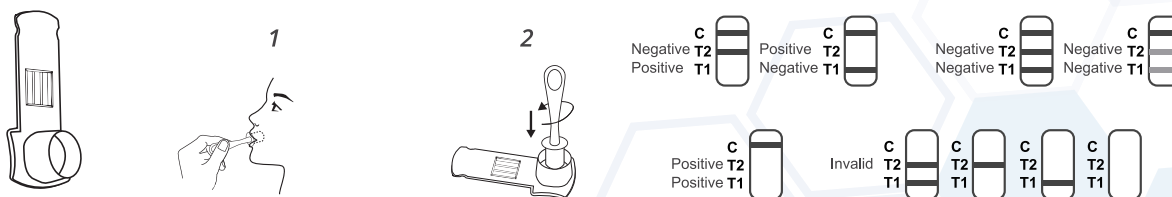
Test	Specimen	Format	Cut-Off	CE Status
5 (COC20/MET50/PCP10)+(THC12/OPI40/AMP50)	Saliva	Cassette	Ref: Analytes	CE
6 (COC20/THC12/MET50)+(MTD30/OPI40/AMP50)	Saliva	Cassette	Ref: Analytes	CE
7 (COC20/MET50/PCP10)+(THC30/OPI40/AMP50)	Saliva	Cassette	Ref: Analytes	CE
8 (COC20/THC30/MET50)+(MTD45/OPI40/AMP50)	Saliva	Cassette	Ref: Analytes	CE
9 (COC20/MET50/PCP10)+(THC100/OPI40/AMP50)	Saliva	Cassette	Ref: Analytes	CE
10 (COC20/MET50/BZO20)+(THC100/OPI40/AMP50)	Saliva	Cassette	Ref: Analytes	CE
11 (COC20/MET50/BZO20)+(MTD30/OPI40/AMP50)	Saliva	Cassette	Ref: Analytes	CE
12 (COC20/MET50/PCP10)+(THC12/OPI40/AMP50)	Saliva	Cassette	Ref: Analytes	CE

Multi-Drug Test Panel (Saliva) (MOP/MET)



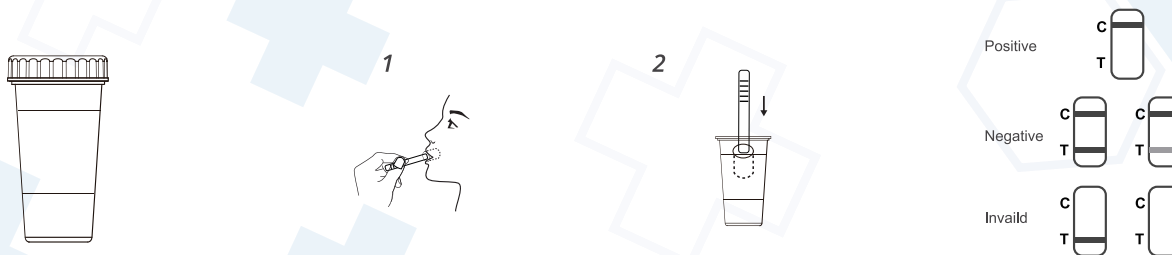
1. Insert the sponge into the mouth. Collect oral fluid for 3 minutes until sponge is soft and fully saturated.
2. Hold the collector insert the sponge into the specimen well. Use the thumb and index finger to squeeze the sponge until red colored liquid appear.
3. Read results within 3 to 8 minutes. Do not read result after 10 minutes.

Multi-Drug Test Panel (Saliva) (COC/MET/PCP/MDMA/OPI/AMP)



1. Insert the sponge into the mouth. Close mouth and move the sponge around for oral fluid collection.
2. Hold the collector and insert the sponge into the specimen well. Use the thumb and index finger to squeeze the sponge until red colored liquid appear.
3. Read results within 3 to 8 minutes. Do not read result after 10 minutes.

Multi-Drug Test Cup (Saliva) (COC/MET/PCP/MDMA/OPI/AMP)



1. Swab should sweep inside of mouth (cheek, gums, tongue) several times.
2. Remove collection swab from mouth and insert the sponge first into the screening cup, pushing until the locking flange locks in place in the bottom of the cup.
3. Read results at 10 minutes. Do not interpret the result after 15 minutes.