



测试报告 Test Report

NO.: BRC5HC5B3378215D1

第 1 页, 共 5 页 Page 1 of 5

委托单位 Applicant:

扬州江庆万向轮有限公司
Yangzhou Jiangqing Caster Manufacturing Co.,Ltd

委托单位提供样品信息如下 The following sample(s) was/were submitted and identified on behalf of the client as:

样品名称 Sample Name: 全塑双轮 full plastic double wheel caster wheel

可覆盖型号 Covered Model: 3 寸、4 寸、5 寸

制造商 Manufacturer: 扬州江庆万向轮有限公司
Yangzhou Jiangqing Caster Manufacturing Co.,Ltd

样品来源 Sample Source: 送样 Send Sample

样品接收日期 Sample Received Date: 2023-06-25

样品测试日期 Test Period: 2023-06-25~2023-06-28

测试要求 Test Requested:

RoHS 2011/65/EU 及修订指令(EU)2015/863 附录 II 的要求
RoHS Directive 2011/65/EU & (EU)2015/863 Annex II

测试依据 Test Methods:

- (1) IEC 62321-5 Edition 1.0:2013 的方法, 用原子吸收光谱仪/电感耦合等离子体发射光谱仪测定铅的含量
IEC 62321-5 Edition 1.0:2013 method, Lead Analysis is performed by AAS/ ICP-OES
- (2) IEC 62321-5 Edition 1.0:2013 的方法, 用原子吸收光谱仪/电感耦合等离子体发射光谱仪测定镉的含量
IEC 62321-5 Edition 1.0:2013 method, Cadmium Analysis is performed by AAS/ ICP-OES
- (3) IEC 62321-4:2013+AMD1:2017 CSV 的方法, 用电感耦合等离子体发射光谱仪测定汞的含量
IEC 62321-4:2013+AMD1:2017 CSV method, Mercury Analysis is performed by ICP-OES
- (4) IEC 62321-7-2 Edition 1.0:2017 的方法, 用紫外-可见分光光度计测定六价格的含量
IEC62321-7-2 Edition 1.0:2017 method, Hexavalent Chromium analysis is performed by UV-Vis
- (5) IEC 62321-6 Edition 1.0:2015 的方法, 用气相色谱质谱联用仪测定多溴联苯和多溴二苯醚的含量
IEC 62321-6 Edition 1.0:2015 method, PBBs and PBDEs Analysis is performed by GC-MS

测试结果 Test Result:

请参见下页 Please refer to next page(s)

编制 (Edited by):

慈双双

审核 (Checked by):

张天宇

慈双双

张天宇

批准 (Approved by):

张耀强

签发日期 (Issued Date):

2023-06-28



本页以下空白 The page below is blank





测试报告 Test Report NO.: BRC5HC5B3378215D1

测试结果 Test Result (单位 Unit: mg/kg)

样品编号及名称 Sample No.&Name: B3378215D1 全塑双轮 full plastic double wheel caster wheel

测试项目 Test Item	方法检出限 MDL	测试结果 Test Result	RoHS 限量 RoHS Limit
铅 Lead (Pb)	2	未检出 Not Detected.	1000
镉 Cadmium (Cd)	2	未检出 Not Detected.	100
汞 Mercury (Hg)	2	未检出 Not Detected.	1000
六价铬 Hexavalent Chromium (Cr ⁶⁺)	8	未检出 Not Detected.	1000
多溴联苯之和 Sum of PBBs	—	未检出 Not Detected.	1000
一溴联苯 Bromobiphenyl	5	未检出 Not Detected.	—
二溴联苯 Dibromobiphenyl	5	未检出 Not Detected.	—
三溴联苯 Tribromobiphenyl	5	未检出 Not Detected.	—
四溴联苯 Tetrabromobiphenyl	5	未检出 Not Detected.	—
五溴联苯 Pentabromobiphenyl	5	未检出 Not Detected.	—
六溴联苯 Hexabromobiphenyl	5	未检出 Not Detected.	—
七溴联苯 Heptabromobiphenyl	5	未检出 Not Detected.	—
八溴联苯 Octabromobiphenyl	5	未检出 Not Detected.	—
九溴联苯 Nonabromobiphenyl	5	未检出 Not Detected.	—
十溴联苯 Decabromobiphenyl	5	未检出 Not Detected.	—
多溴二苯醚之和 Sum of PBDEs	—	未检出 Not Detected.	1000
一溴二苯醚 Bromodiphenyl ether	5	未检出 Not Detected.	—
二溴二苯醚 Dibromodiphenyl ether	5	未检出 Not Detected.	—
三溴二苯醚 Tribromodiphenyl ether	5	未检出 Not Detected.	—
四溴二苯醚 Tetrabromodiphenyl ether	5	未检出 Not Detected.	—
五溴二苯醚 Pentabromodiphenyl ether	5	未检出 Not Detected.	—
六溴二苯醚 Hexabromodiphenyl ether	5	未检出 Not Detected.	—
七溴二苯醚 Heptabromodiphenyl ether	5	未检出 Not Detected.	—
八溴二苯醚 Octabromodiphenyl ether	5	未检出 Not Detected.	—
九溴二苯醚 Nonabromodiphenyl ether	5	未检出 Not Detected.	—
十溴二苯醚 Decabromodiphenyl ether	5	未检出 Not Detected.	—

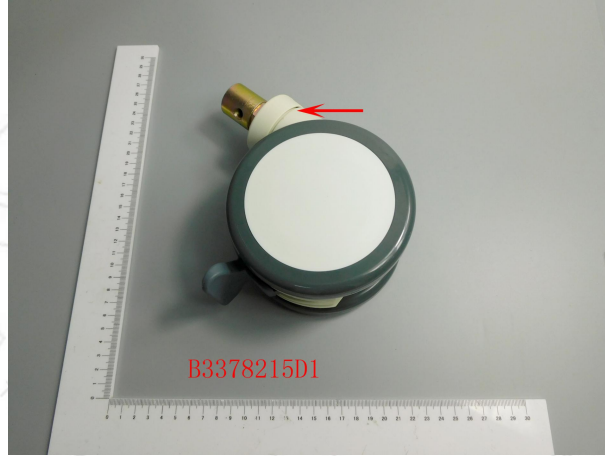
备注 Note: (1) mg/kg = ppm
 (2) “—”= 未规定 Does not stipulate
 (3) 最大允许极限值引用 RoHS 2011/65/EU 及修订指令(EU)2015/863 附录 II 的要求
 The most allowable limit value reference to RoHS Directive 2011/65/EU & (EU)2015/863 Annex II
 (4) 未检出(<方法检出限)Not Detected (<MDL)
 (5) 根据委托单位声明,可覆盖型号样品材质相同, PONY 不负责该信息的真实性。
 According to the statement of the applicant, covered model is the same material, PONY is not responsible for the authenticity of this information.
 ————本页以下空白 The page below is blank—————





测试报告 Test Report NO.: BRC5HC5B3378215D1

样品编号和照片 Sample No. & Photo:



仅对报告照片中的样品负责 Pony authenticate the photo on original report only
——本页以下空白 The page below is blank——



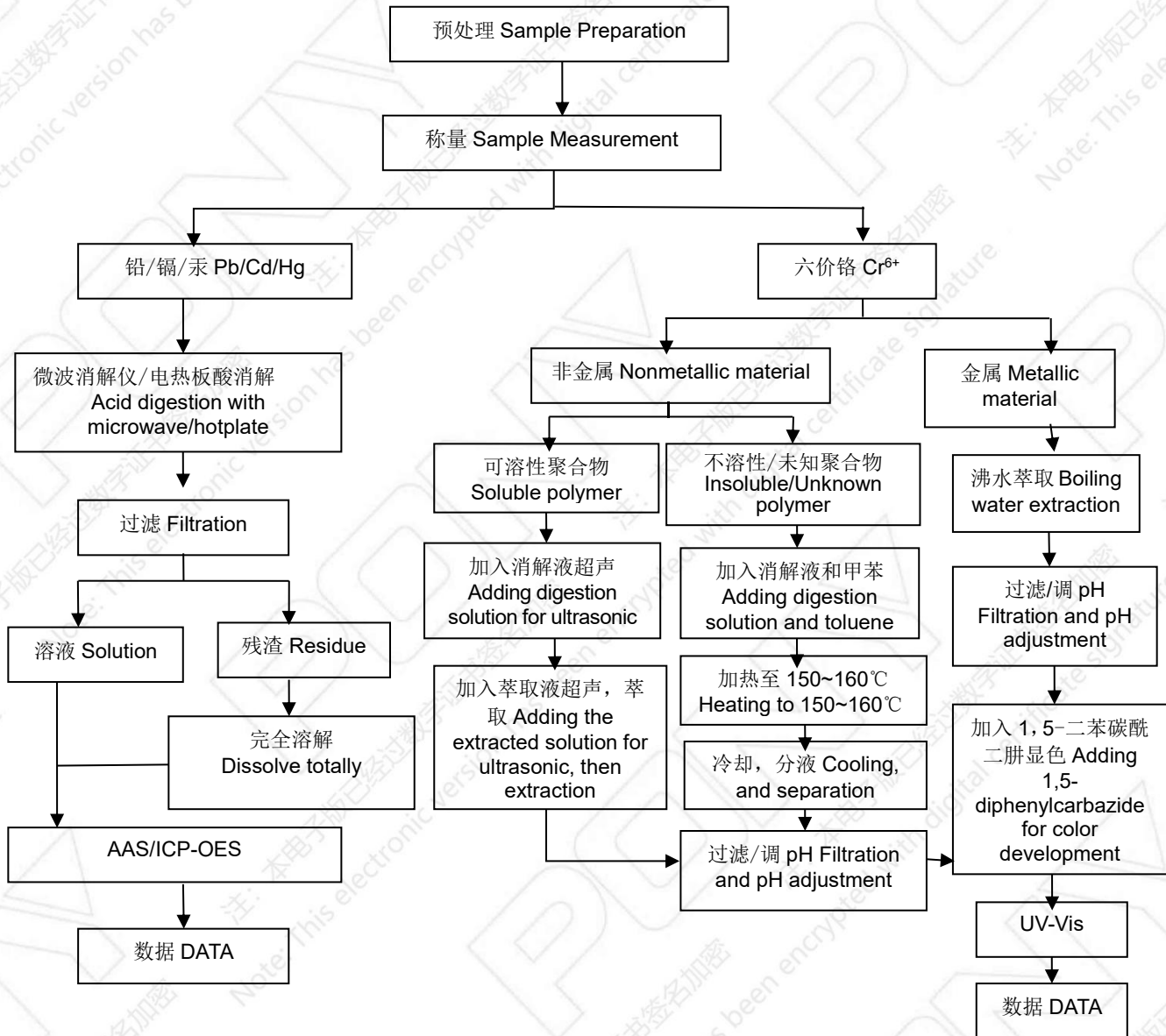


测试报告 Test Report NO.: BRC5HC5B3378215D1

测试流程图 Measurement Flow-chart

样品按照下述流程被完全消解 (六价铬除外)。

These Samples Were Dissolved Totally By Pre-conditioning Method According To Below Flow Chart.
(Cr⁶⁺ Test Method Excluded)

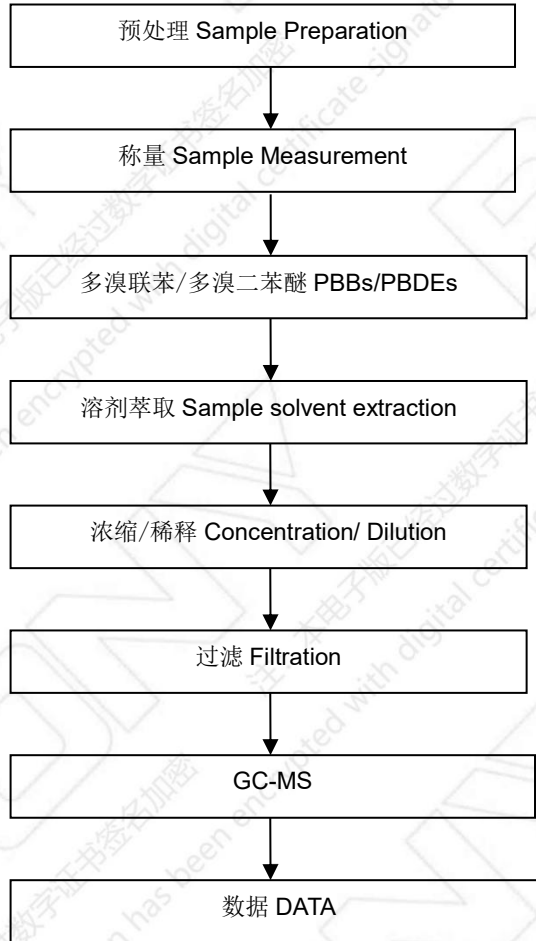


—————本页以下空白 The page below is blank—————





测试流程图 Measurement Flow-chart



报告结束 End of Report

