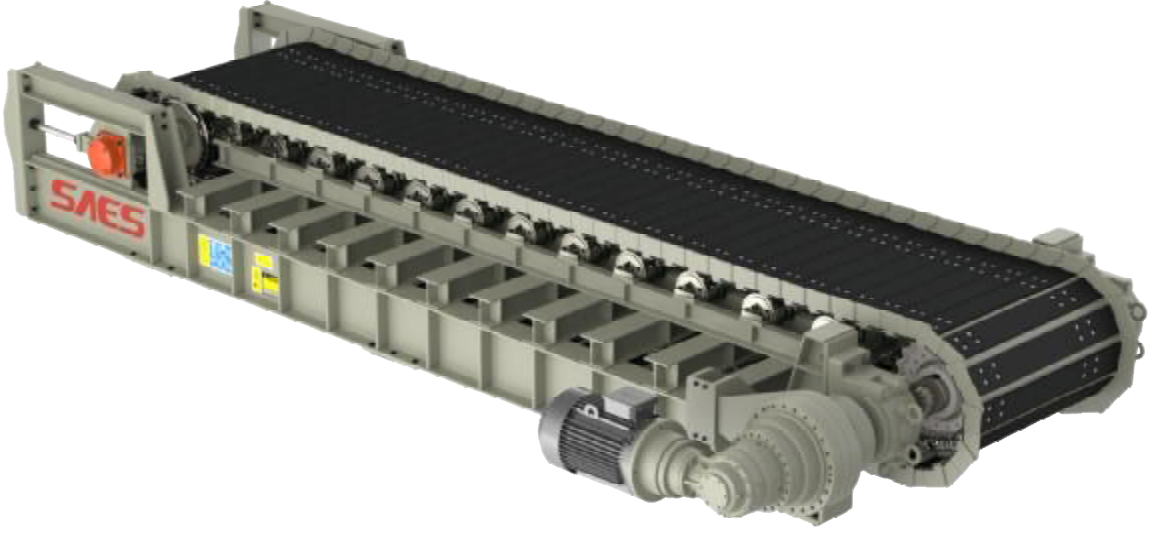




SAES BP14-4 D4 APRON FEEDER



SAES DIŐ TİCARET A.Ő.

Gebze Güzeller OSB Mimar Sinan Cad. No.8 41400 Kocaeli / Turkey
PH +90 262 751 46 51 | FX +90 262 751 46 50 | www.saes.com.tr

SAES SAES BP14-4 D4 Apron Feeder Technical Specifications

1.	Apron Feeder	SAES BP14-4 D4		
	Capacity (maximum design)	1.000 tph		
	Feeder Length C/C	4.000 mm		
	Feeder Width	1.400 mm		
	Incline Angle	0,0 °		
1	Reducer			
	Type	Planetary		
	Power	37,0 kW		
1.2	Motor			
	Power	37.0 kW		
1.3	Chain			
	Chain Size	D4		
1.4	Drive Sprockets			
	Teeth Numbers	21		
1.5	Tail Wheel			
	Wheel Diameter	Ø 581,67 mm		
1.6	Carry Rollers			
	Roller Diameter	Ø 150 mm		
1.7	Return Rollers			
	Roller Diameter	Ø 140 mm		
1.8	Pan			
	Pan Type	Fabricated Steel		
	Pan Thickness	25 mm		
	Pan Width	171 mm		
	Pan Length	1.400 mm		
1.9	Head Shaft Assembly			
	Bearings & Housing			
	Bearings D	Ø 180 mm		
	Head Shaft	Ø 190 mm		
1.10	Tail Shaft Assembly			
	Bearings & Housing			
	Tail Shaft	Ø 80 mm		
1.11	Frame Assembly	IPE, HEA, UPN		