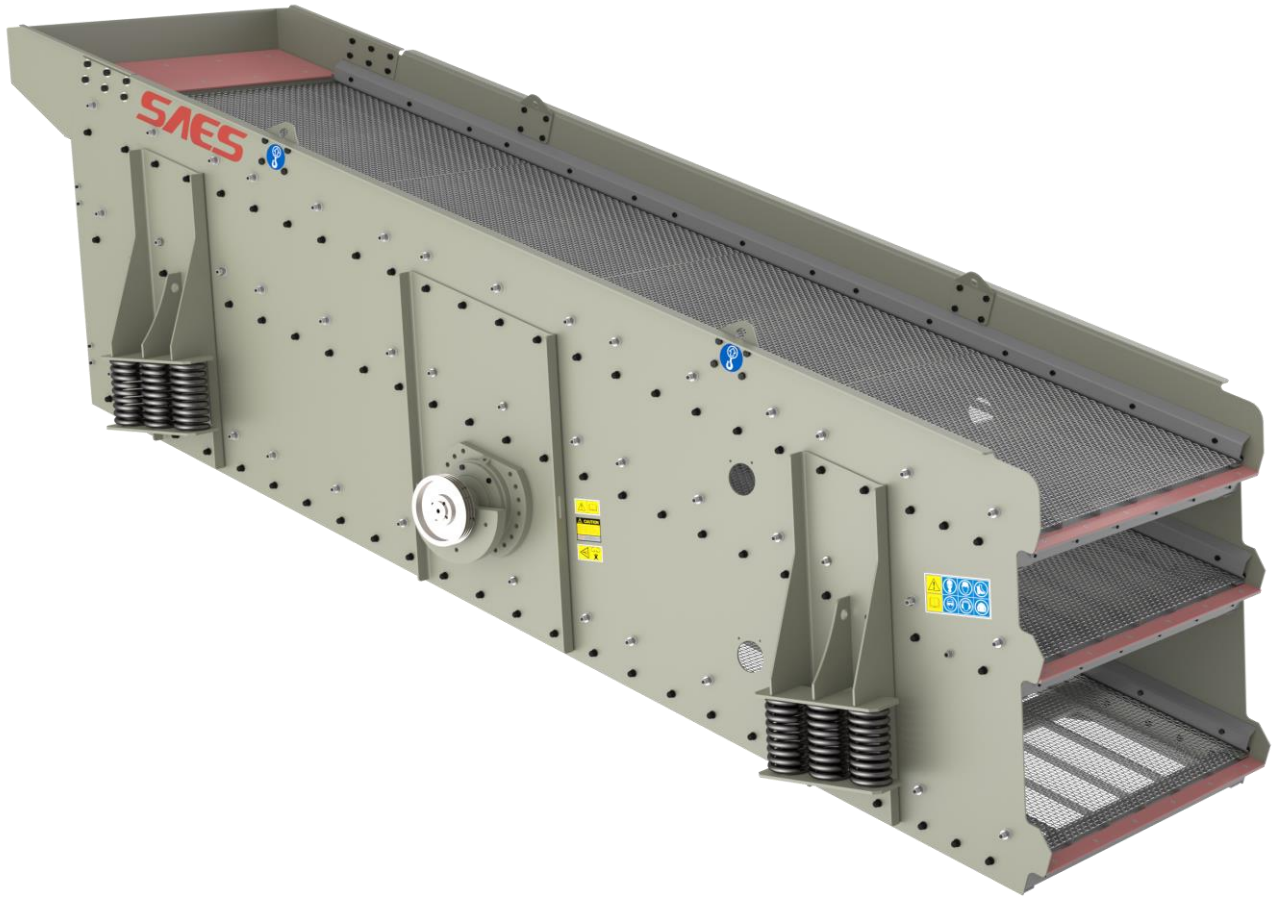




E2060™ VIBRATING SCREEN



E2060™ Vibrating Screen Technical Specifications

Width	1.200-2.400 mm
Length	3.600-7.200 mm
Screening Area	4,8-17,3 m ²
Decks	2-3-4
Power	7,5-45 kW
Max. Feed Size	200 mm
Max. Mesh Size	70 mm
Vibration type	Circular Motion
Acceleration	3<G<5 g

SAES DIŐ TİCARET A.Ő.

Gebze Güzeller OSB Mimar Sinan Cad. No.8 41400 Kocaeli / Turkey
PH +90 262 751 46 51 | FX +90 262 751 46 50 | www.saes.com.tr

Main Body Details

- Side plates are mounted with huck bolts to decks.
- Springs console are mounted with huck bolts to side plates.
- Deep feed box mounted with screws to main body.
- Heavy duty springs are used on main body pedestal.
- Replaceable liners on feed box.
- Screen body designed for 18° degree working incline.

Main Shaft Assembly

- Heavy duty bearings are used on main shaft assembly.
- Oil lubrication system std. (grease optional).

Drive Assembly

- 7,5 - 45 kW electrical motor is included.
- Pulleys and V belts are included.
- Safety guard of belts & pulleys is included.

Decks Details

- Screen media will supplied by SAES.
- Side tensioning media will be used on.
- Opening will be choose according to CUSTOMERS preference.

Steel Chassis & Discharge Chutes

- IPE steel is used on main foot of steel chassis.
- NPI steel is used on support cross link.
- Wear liners are on front discharge chutes flow surfaces.
- Stairs, maintenance platforms and hand rails are included.

Finalization

- RAL 9001 color will be used for painting.
- One coat paint primer will apply before painting.
- One layer final paint will be applied.
- Documentation will supplied as digital copy.