

公司简介

Company Profile

南昌佰仕威新材料科技有限公司，创建于2009年，位于江西省南昌市，东邻上海，南接广东，交通便利。

南昌佰仕威新材料科技有限公司是一家专业生产高性能硬质合金的厂家，包括各种牌号和型号的标准和非标准件。已形成硬质合金生产及其精加工生产体系。本公司以人为本，集国内外最新工艺技术，配有研究，分析，检测室。技术力量雄厚，工艺设备先进，质量检测手段完善，能及时为用户提供需求。

主要产品：矿山工具，石油柱齿，焊接刀片，圆棒，拉丝模，冷墩模，板条，密封件，木工刀片，锯齿片，铣刀，铰刀，旋转锉及非标件等。它们广泛地用于矿山开采，石油，机械，电子，化工，切削等行业。目前，产品已远销国内外。

本着可靠的质量，优惠的价格，周到的售后服务，我们真诚地希望能与国内外客户建立长期的互惠互利合作关系。热诚的欢迎来电询问。

外客户建立长期的互惠互利合作关系。热诚的欢迎来电询问。

Nanchang Bestway Cemented Carbide CO.,LTD was founded in 2009, which is located in Nanchang city, Jiangxi Province. We are with Shanghai in the east and Guangdong in the south, enjoying great convenience in transportation.

Nanchang Bestway Cemented Carbide CO.,LTD is a professional manufacturer with high performance cemented carbide, including various of grades and sizes with standard or non-standard. Production of hard alloy and its finished production system has been formed. Moreover, the company is people-oriented, which collects with domestic and overseas latest technology. It includes research, analysis and testing laboratory. With the strong technical force, advanced equipment and reliable quality testing method, this can meet customer's requirement timely.

Our main products are as follows: mines, oil column gear, welding blade, round bar, wire drawing die, cold heading die, lath seals, woodworking blades, serrated blades, milling cutter, reamer, rotary burrs and some non-standard ones. They are widely used in mining, petroleum, machinery, electronics, chemical, cutting and other industries. At present, the products are sold in domestic and overseas market.

In spirit of reliable quality, competitive price, thoughtful after-sales service, we sincerely hope to establish long-term mutually beneficial cooperation with domestic and foreign customers. You are warmly welcomed to inquire us!

公司荣誉与文化

Honor and culture of the company



企业文化：

诚信、踏实、优质、一流！

公司宗旨：

以人为本，诚信务实，创新进取，回报社会。

信誉至上，用户第一，质量满意，交货准时，愿与您真诚合作、携手发展。

愿景：

公司拥有较强实力的技术研发中心，技术创新中心，同时，我们大力引进系统，现代，数字化的生产检测设备，不断在生产技术方面求变求新，大胆改革，使产品质量与企业效益紧密结合。

Corporate culture:

Integrity, pragmatic, high quality, first-class!

Corporate purpose:

People-oriented, integrity and pragmatic, innovative and enterprising, return to society.

Credit first, customer first, quality satisfaction, delivery on time, ready to work with your sincere cooperation, work together to promote common development.

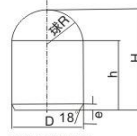
Vision:

The company has a strong technology R&B center, and a center for technological innovation.

Meanwhile, we vigorously introduce the new system, modern and digital production testing equipment. Then we constantly change and reform the production technology and innovation, in order to make the product quality and enterprise benefit closely.



矿山油田钻头用球齿 DRILL BIT FOR MINE AND OIL



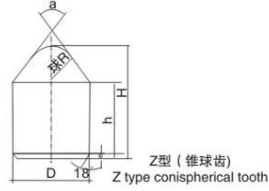
Q型 (球形齿)
Q type spherical tooth

Q型

型号 Type	Dimension 尺寸 (mm)				
	D	H	h	R	e
Q0810	8.0	10.0	7.1	4.2	1.5
Q0812	8.0	12.0	9.1	4.2	1.5
Q1010	10.0	10.0	6.2	5.2	1.5
Q1012	10.0	12.0	8.2	5.2	1.5
Q1014	10.0	14.0	10.2	5.2	1.5
Q1214	12.0	14.0	9.4	6.2	1.5
Q1216	12.0	16.0	11.4	6.2	1.5
Q1218	12.0	18.0	13.4	6.2	1.5
Q1313	13.0	13.5	8.4	6.7	1.5
Q1315	13.0	15.5	10.4	6.7	1.5
Q1416	14.0	16.0	10.5	7.2	1.5
Q1417	14.0	17.0	11.1	7.6	1.5
Q1420	14.0	20.0	14.5	7.2	1.5
Q1422	14.0	22.0	16.5	7.2	1.5
Q1517	15.0	17.0	11.1	7.6	2.0
Q1618	16.0	18.0	11.6	8.2	2.0
Q1623	16.0	23.0	16.6	8.2	2.0
Q1625	16.0	25.0	18.6	8.2	2.0
Q1825	18.0	25.0	17.7	9.2	2.0
Q1827	18.0	27.0	19.7	9.2	2.0
Q2030	20.0	30.0	20.7	10.2	2.0
Q2540	25.0	40.0	29.8	12.7	2.0

DRILL BIT MINE/OIL 矿山油田钻头用球齿

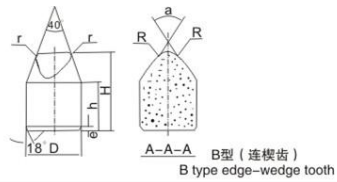
Z型



Z型 (锥球齿)
Z type conispherical tooth

型号 Type	Dimension 尺寸 (mm)					
	D	H	h	R	e	$\alpha(^{\circ})$
Z0810	8.0	10.0	6.5	3.0	1.5	35.0
Z0812	8.0	11.0	8.5	3.0	1.5	35.0
Z1011	10.0	10.0	7.1	4.4	1.5	35.0
Z1013	10.0	13.0	9.1	4.4	1.5	35.0
Z1015	10.0	15.0	9.9	4.0	1.5	35.0
Z1215	12.0	15.0	10.2	5.1	1.5	35.0
Z1218	12.0	18.0	13.0	4.8	1.5	35.0
Z1416	14.0	16.0	9.5	4.7	1.5	35.0
Z1418	14.0	18.0	12.5	6.0	1.5	35.0
Z1420	14.0	20.0	13.7	5.0	1.5	35.0
Z1422	14.0	22.0	15.7	5.0	1.5	35.0
Z1625	16.0	25.0	17.3	5.0	1.5	35.0

B型

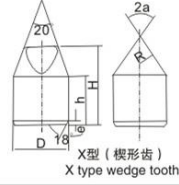


B型 (连楔齿)
B type edge-wedge tooth

型号 Type	Dimension 尺寸 (mm)								
	D	H	h	R	r	e	$\alpha(^{\circ})$	$\beta(^{\circ})$	
B1417	14.0	17.0	12.0	3.0	2.5	1.5	90	3.0	
B1418	14.0	18.0	12.0	3.0	2.5	1.5	80	4.0	
B1419	14.0	19.0	12.0	3.0	2.5	1.5	75	4.0	
B1621	16.0	21.0	14.0	3.0	2.5	2.0	70	4.5	
B1924	19.0	24.0	15.0	3.5	3.0	2.0	70	4.5	
B2230	22.0	30.0	17.0	3.5	3.0	2.0	60	5.0	



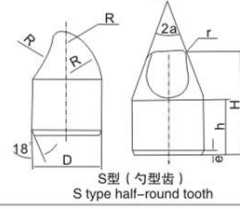
矿山油田钻头用球齿 DRILL BIT MINE/OIL



X型

型号 Type	Dimension 尺寸 (mm)							
	D	H	h	R	r	e	$\alpha^{(\circ)}$	$\beta^{(\circ)}$
X0810	8.0	10.0	6.5	2.0	1.8	1.5	45	22.5
X1011	10.0	11.0	7.0	2.5	2.0	1.5	45	22.5
X1013	10.0	13.0	9.0	2.5	2.0	1.5	45	22.5
X1115	11.0	15.0	8.0	2.75	2.5	1.5	22.5	22.5
X1215	12.0	15.0	9.0	3.0	2.5	1.5	45	22.5
X1217	12.0	17.0	10.5	3.5	3.0	1.5	35	20
X1418	14.0	18.0	10.0	3.5	3.0	1.5	45	22.5
X1420	14.0	20.0	11.0	2.7	3.0	1.5	35	22.5
X1520	15.0	20.0	12.0	3.0	3.0	2.0	40	22.5
X1621	16.0	21.0	11.0	2.6	3.0	2.0	35	22.5
X1623	16.0	23.0	12.0	3.0	3.5	2.0	30	18
X1721	17.0	21.0	13.0	4.0	3.5	2.0	40	22.5
X1724	17.0	24.0	13.0	3.5	3.5	2.0	30	22.5
X1929	19.0	29.0	17.0	4.0	3.0	2.0	30	15

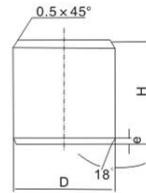
DRILL BIT MINE/OIL 矿山油田钻头用球齿



S型

S型 (勺型齿)
S type half-round tooth

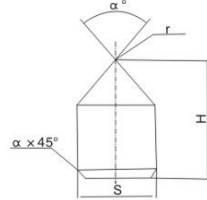
型号 Type	Dimension 尺寸 (mm)							
	D	H	h	R _a	R _b	R _c	α ^(°)	e
S1421	14.0	21.0	12.0	12.0	20.0	2.5	18	1.5
S1623	16.0	23.0	12.0	15.0	23.0	2.5	18	1.5
S1626	16.0	26.0	14.0	20.0	28.0	2.5	18	20.0
S1724	17.0	24.0	13.0	16.0	25.0	3.0	20	20.0
S1930	19.0	30.0	17.0	16.0	25.0	3.0	15	20.0
S2240	22.0	40.0	21.0	20.0	30.0	3.0	13	20.0
S2545	25.0	45.0	23.0	30.0	35.0	3.5	13	20.0



P型

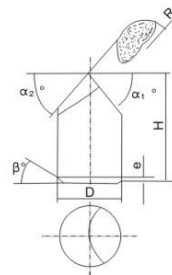
P型 (平顶齿)
S type flat-top tooth

型号 Type	Dimension 尺寸 (mm)		
	D	H	r
P0607	6.0	7.0	1.5
P0707	7.0	7.0	1.5
P0807	8.0	7.0	1.5
P0908	9.0	8.0	1.5
P1008	10.0	8.0	1.5
P1109	11.0	9.0	1.5
P1210	12.0	10.0	1.5
P1412	14.0	12.0	1.5



M20型

型号 Type	Dimension 尺寸 (mm)				
	D	H	r	$\alpha^{(\circ)}$	e
M2009	9.0	16.0	1.0	90	1.0
M2012A	12.0	18.0	1.5	82	1.0
M2012B	12.0	20.0	1.5	82	1.5
M2018	18.0	32.0	1.5	82	2.0



M21型

型号 Type	Dimension 尺寸 (mm)						
	D	H	R	$\alpha_1^{(\circ)}$	$\alpha_2^{(\circ)}$	e	$\beta^{(\circ)}$
M2110A	10.0	18.0	8.0	53	53	1.0	30
M2110B	10.0	20.0	5.5	50	58	1.0	45
M2112A	12.0	20.0	6.5	32	40	1.0	45
M2112B	12.5	25.0	10.0	46	46	1.0	30
M2115	15.0	22.0	11.0	45	45	2.5	30
M2118	18.0	20.0	14.0	37	37	1.5	45

7 <http://www.bwcarbide.com> 可按用户要求的规格生产
can be customized according to customer's requirements

Contact: Vicky He

Email: saleslilang@bwcarbide.com

Mobile/Whatsapp No.: 0086 13870636516