

WEISS WPG 7 CNC PRODUCTION CIRCULAR GRINDING MACHINE



WPG 7 – COMPACT EXTERNAL CIRCULAR GRINDING MACHINE WORKPIECES UP TO 250 MM IN LENGTH

Highly productive, flexible, and with an extremely small footprint – the new WPG 7 CNC external circular grinding machine delivers significantly increased performance for machining small and medium-sized workpieces.

Use this solution to perfect your grinding processes: Machine workpieces up to 250 mm in length and with a maximum diameter of 200 mm extremely efficiently with the WPG 7 from EMAG Weiss.

This is made possible by a rigid machine design, very dynamic axes, a powerful grinding wheel drive unit, and an extremely small footprint. Overall the WPG 7 only requires around four square meters of space!

Furthermore, the robust machine is easily accessible and can be retooled quickly for different machining jobs.

**WPG 7 FROM
EMAG WEISS**

Save space!



IG MACHINE FOR



TECHNICAL DATA

Center height	100 (125) mm 4 (5) in
Distance between centers	280 mm 11 in

Longitudinal axis (Z)

Longitudinal travel	390 mm 15 in
Feed speed	15 m/min 591 ipm
Table adjustment	8°

Lateral axis (X)

Lateral travel	190 mm 8 in
Feed speed	10 m/min 394 ipm

Grinding headstock

Grinding wheel diameter	400 (500) mm 16 (20) in
Max. grinding wheel width	80 mm 3 in
Grinding wheel bore	127 (203)
Grinding wheel peripheral surface speed	50 m/s 1968 ips

Workpiece headstock

Mounting cone	W20 (W25 or MK4, MK 5)
Speed	0 to 2,000 m/s 0 to 78,740 ips



HIGH-END CNC CONTROL SYSTEM

At CNC-Technik Weiss GmbH we have always placed our trust in the expertise of Eckelmann AG for our CNC control systems.

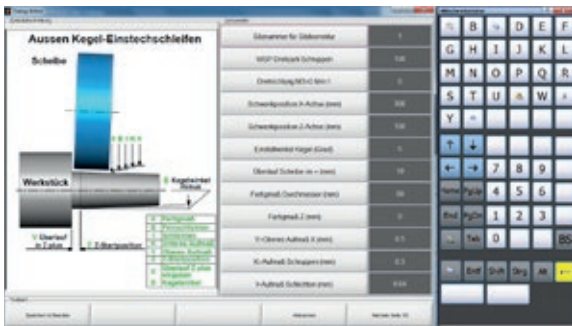
Eckelmann started development work on a CNC control system specially for the circular grinding application before 1980. Eckelmann continues to provide specific functions in its control system for grinding work, which are not yet state of the art for other control system manufacturers.

We currently use the ENC66 control system from Eckelmann in all our CNC machines.



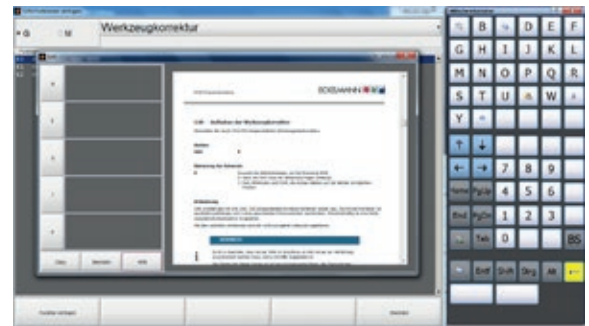
The machine can be retrofitted with various automation systems for unmanned circular grinding.

EASY! Touchscreen HMI

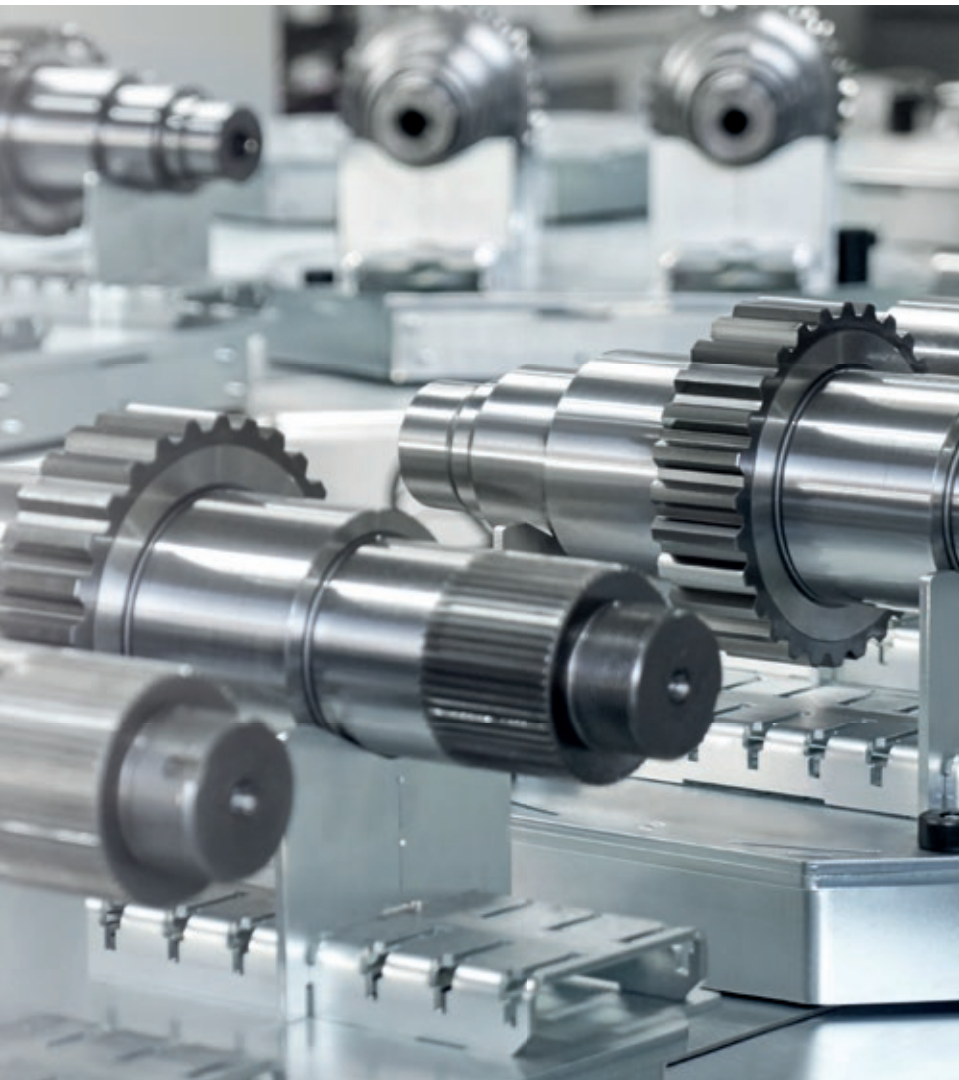


- + Windows-based control interface
- + USB and Ethernet interface
- + Simple entry of technology values in the relevant cycle
- + Graphic support for technology parameters

INTELLIGENT G and M code support



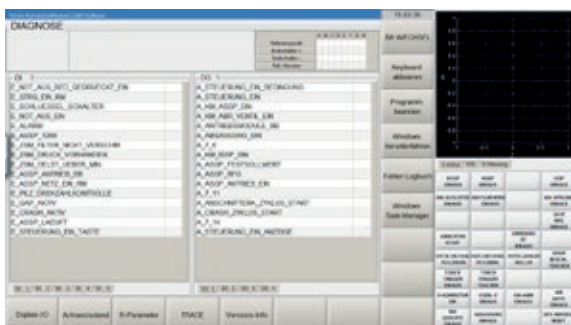
- + Functions and cycles displayed in clear text
- + Extensive help including documentation available in the machine control system



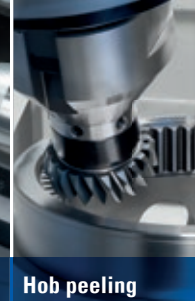
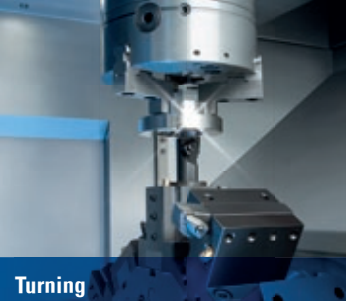
HIGHLIGHTS

- + **Minimum footprint**
Small “hook-up-and-install machine” with a footprint of 1,800 x 2,400 mm (including control cabinet and peripheral equipment)
- + **Maximum flexibility**
Adjustable grinding wheel peripheral surface speed up to 50 m/s, maximum grinding wheel size 500 x 80 mm, simple programming of cycles, tailstock with fine adjustment MK3
- + **Variable configuration**
Available in the form of a 0° straight plunge-cut or 30° angled plunge-cut machine, workpiece headstock with stationary and rotating tip MK4/MK5 or W20/W25
- + **Optional benefits**
In-process measuring control system (diameter), active longitudinal positioning, automatic balancing system, and GAP and crash control are available.

TRANSPARENT Diagnostics



- + SPS states displayed in clear text
- + Drive diagnostics on the HMI
- + Trace record and parameter box diagnostics
- + Optional BDE/MDE interface



Turning

Milling

Grinding

Gear hobbing

Hob peeling

AT HOME, AROUND THE WORLD

EMAG Salach GmbH

Salach

Austraße 24
73084 Salach
Germany
Phone: +49 7162 17-0
Fax: +49 7162 17-4027
E-mail: info@salach.emag.com

Austria

Glaneckerweg 1
5400 Hallein
Austria
Phone: +43 6245 76023-0
Fax: +43 6245 76023-20
E-mail: info@austria.emag.com

Hungary

Gerenda 10
1163 Budapest
Hungary
Phone: +36 30 9362-416
E-mail: lbujaki@emag.com

Frankfurt

Martin-Behaim-Strasse 12
63263 Neu-Isenburg
Germany
Phone: +49 6102 88245-0
Fax: +49 6102 88245-412
E-mail: info@frankfurt.emag.com

Sweden

Glasgatan 19B
73130 Köping
Sweden
Phone: +46 221 40305
E-mail: info@sweden.emag.com

Czech Republic

Lolkova 766
103 00 Praha 10 – Kolovraty
Czech Republic
Phone: +420 731 476070
E-mail: mdlis@emag.com

Marketing companies

EUROPE

EMAG MILANO S.r.l.

Via dei Mille 31
20098 San Giuliano Milanese (Mi)
Italy
Phone: +39 02 905942-1
Fax: +39 02 905942-24
E-mail: info.milano@emag.com

EMAG MILANO S.r.l.

Sucursal en España
Pasaje Arrahona, nº 18
Polígono Industrial Santiga
08210 Barberà del Vallès (Barcelona)
Spain
Phone: +34 93 7195080
Fax: +34 93 7297107
E-mail: info.spain@emag.com

AMERICA

EMAG L.L.C. USA

38800 Grand River Avenue
Farmington Hills, MI 48335
USA
Phone: +1 248 477-7440
Fax: +1 248 477-7784
E-mail: info@usa.emag.com

EMAG MILANO S.r.l.

Succursale en France
5 Avenue de l'Europe
18150 La Guerche sur l'Aubois
France
Phone: +33 02 48 7711-00
Fax: +33 02 48 7711-29
E-mail: info.france@emag.com

EMAG OOO

ul. Akademika Chelomeya 3/2
117630 Moscow
Russia
Phone: +7 495 287 0960
Fax: +7 495 287 0962
E-mail: info@russia.emag.com

EMAG MEXICO

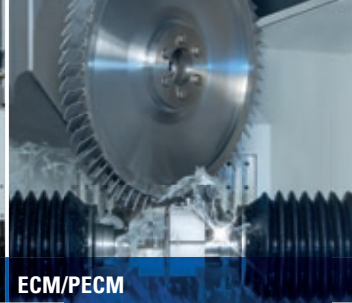
Maquinaria EMAG Mexico S de RL de CV
Av. Hercules 301 Nave 1
Polígono Empresarial Santa Rosa
76220 Santa Rosa Jauregui, Querétaro
Mexico
Phone: +52 442 291 1552
E-mail: info@mexico.emag.com

EMAG DO BRASIL

Edifício Neo Corporate Offices, CJ 1503
Rua Enxovia, 472
04711-030 São Paulo SP
Brazil
Phone: +55 11 38370145
Fax: +55 11 38370145
E-mail: info@brasil.emag.com



Thermal joining



ECM/PECM



laser welding



Induction hardening

Poland

ul. Krzycka 71A/6
53-020 Wrocław
Poland
Phone: +48 728 389 989
E-mail: info@poland.emag.com

Turkey

Sanayi Cad. No.: 44
Nish İstanbul Sitesi D Blok
D: 155 Yenibosna – İstanbul
Turkey
Phone: +90 532 694 54 44
E-mail: ckoc@emag.com

ASIA

EMAG (China) Machinery Co., Ltd.

Sino-German Advanced Manufacturing
Technology International Innovation park
Building 2, No. 101, Chen Men Jing Road
215400 Taicang
Jiangsu, China
Phone: +86 512 5357-4098
Fax: +86 512 5357-5399
E-mail: info@emag-china.com

EMAG (Chongqing) Machinery Co., Ltd.

No. 10th Lailong Road
Yongchuan District
402160 Chongqing
China
Phone: +86 23 49783399
Fax: +86 23 49783388
E-mail: info@emag-china.com

EMAG INDIA Pvt. Ltd.

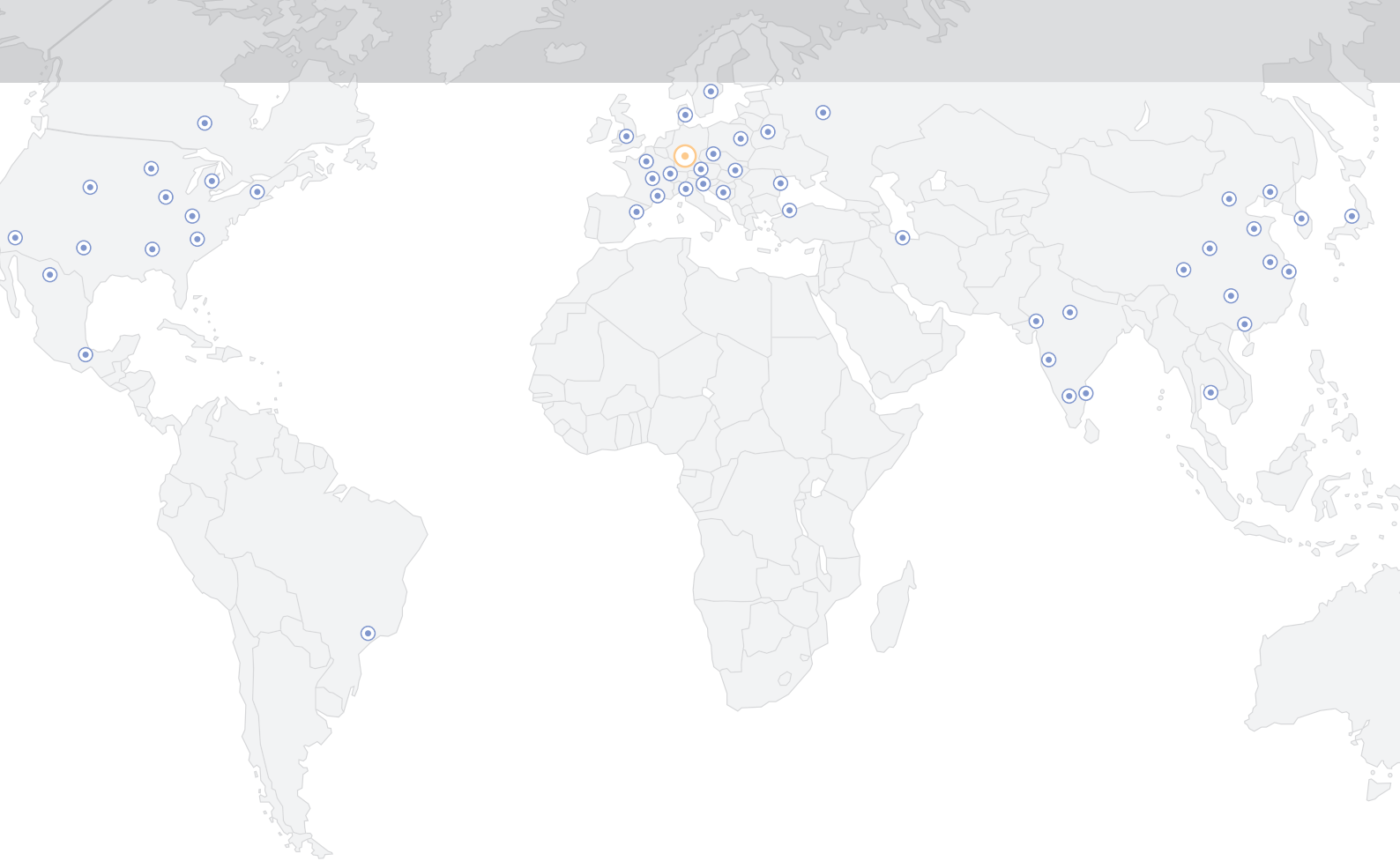
Technology Centre
No. 17/G/46-3, Industrial Suburb,
2nd Stage, Yeshwantpur,
Bengaluru – 560 022
India
Phone: +91 80 50050163
E-mail: info@india.emag.com

EMAG KOREA Ltd.

Rm204, Biz center, SKn Technopark,
124 Sagimakgol-ro, Sangdaewon-dong,
Jungwon-gu, Seongnam City,
Gyeonggi-do, 462-721
South Korea
Phone: +82 31 776-4415
Fax: +82 31 776-4419
E-mail: info@korea.emag.com

TAKAMAZ EMAG Ltd.

1-8 Asahigaoka Hakusan-City
Ishikawa Japan, 924-0004
Japan
Phone: +81 76 274-1409
Fax: +81 76 274-8530
E-mail: info@takamaz.emag.com



CNC-TECHNIK WEISS GMBH

Neckarstrasse 10
72666 Neckartailfingen
Phone: +49 (0) 7127 95720-0
Fax: +49 (0) 7127 95720-28
info@cnc-technik-weiss.de
www.cnc-technik-weiss.de

