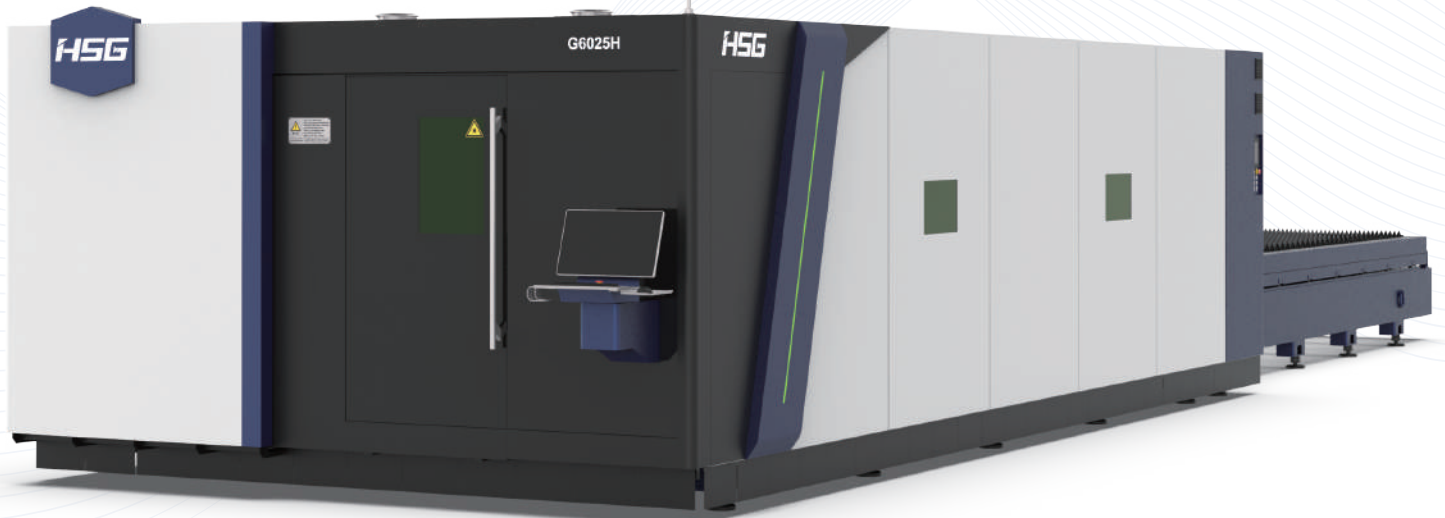




Cutting | Bending | Welding | Automation



GH

▪ High-performance Laser Cutting Machine ▪

Company Culture



MISSION

Intelligent manufacturing changes future



VALUES

Customer-focused and employee-based



VISION

Become a respectable enterprise in the global metal forming equipment field

Company Profile



19

Global Branches



100+

Countries Covered



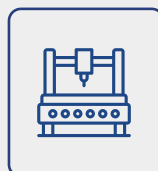
5

Manufacturing Bases



30+

Global Service Centers



8,000+

Annual Capability



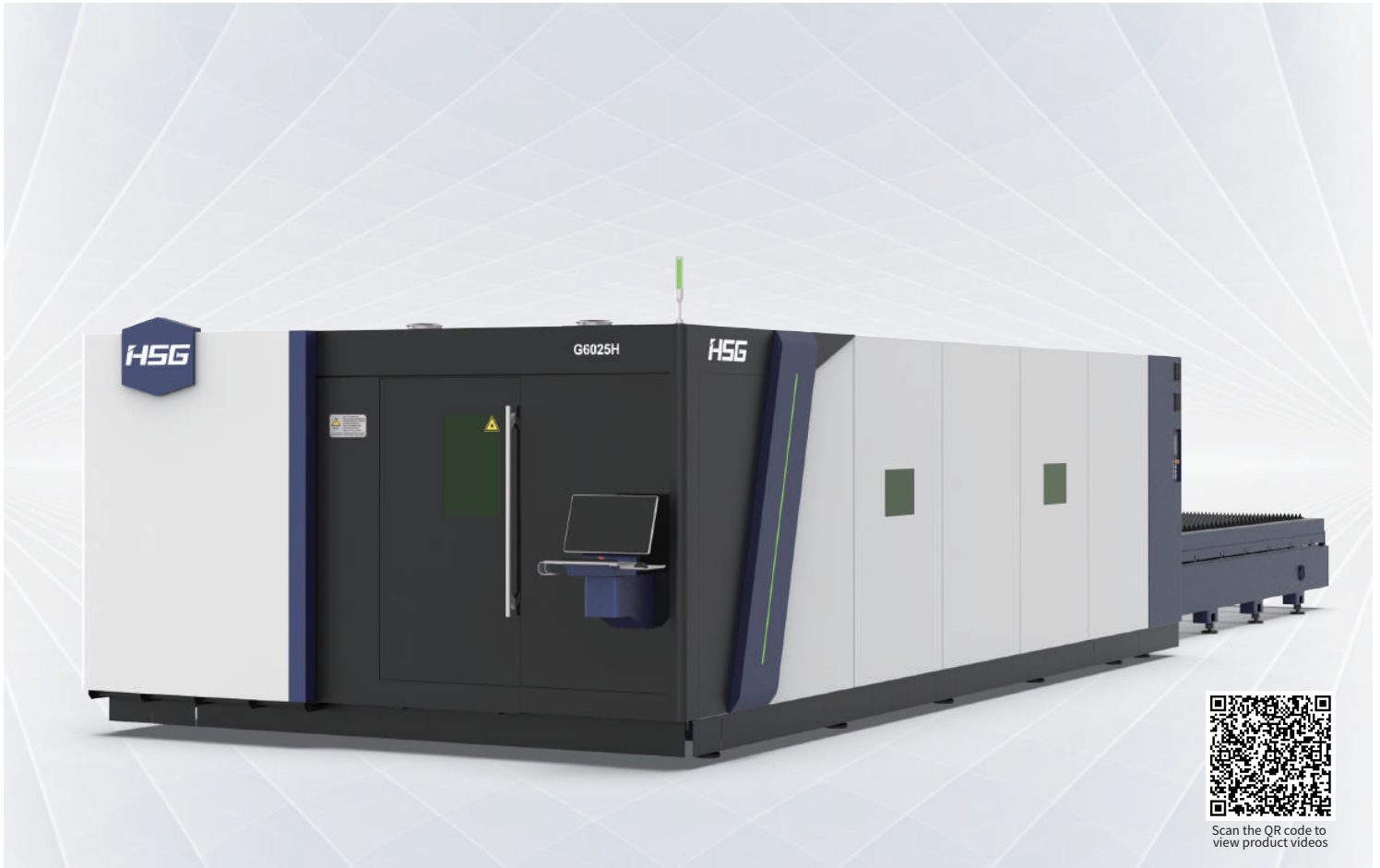
135,000m²

Occupied Area



GH 3000-30000W

High-performance Laser Cutting Machine



Technical Parameters

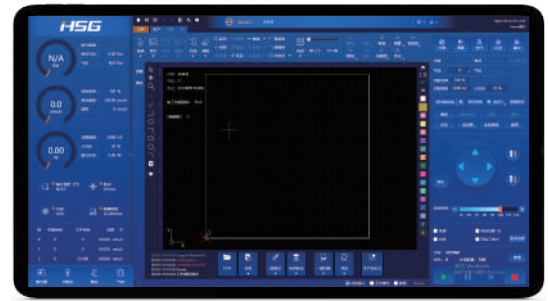
Technical Parameters	G3015H	G4020H	G6025H	G8025H	G12025H
Power	3000W-30000W	3000W-30000W	6000W-30000W	12000W-30000W	12000W-30000W
Processing format (L*W)	3048mm*1524mm	4064mm*2032mm	6096mm*2540mm	8150mm*2540mm	12500mm*2540mm
X/Y-axis positioning accuracy	±0.03mm/m	±0.03mm/m	±0.03mm/m	±0.03mm/m	±0.03mm/m
X/Y-axis repositioning accuracy	±0.02mm	±0.03mm	±0.03mm	±0.03mm	±0.03mm
Max. Linkage Speed	200m/min	200m/min	200m/min	200m/min	200m/min
Max. Linkage Acceleration	4G	2.8G	2.8G	2.8G	2.8G

* Machine appearance, technical parameters, function description, data comparison shown in this page are from HSG in-house laboratory. All testing results and experimental data shall be subject to real machine.



Bus Control System

- Upgraded version of bus control system has strong and diverse functions, which makes users enjoy green and intelligent control system through simple operations.
- Intelligent path optimization with brand-new algorithm.
- Smart vibration control.
- Torque protection of dual drives.
- DA correction of air pressure.



Brand-new Aluminum Beam

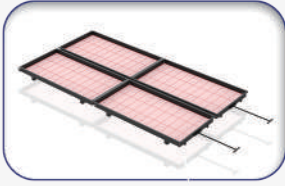
- The new fifth-generation 6-series aluminum beam has 20% less weight and 15% more torsional resistance than the previous generation. Lightweight design beams play a high dynamic performance of the equipment to improve processing efficiency.



Bus-based Laser Cutting Heads

- HSG developed and launched multiple high-power bus cutting heads ranging from 10kW to 40kW to achieve stable cutting of thick sheets.
- Optical filming to prevent lens pollution
- Real-time monitoring of laser focus
- Bus-based height adjusting system





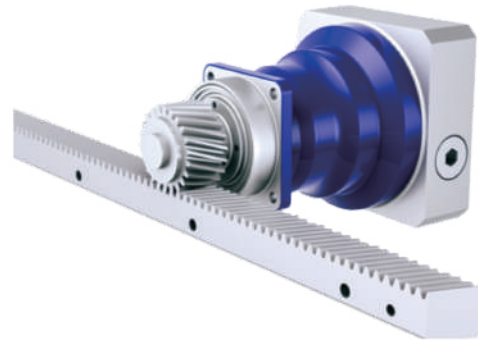
Heat Protection Without Heat Damage Fear

- Material waste device is made of high-density burn prohibition plates for further improving heat protection of the machine bed.



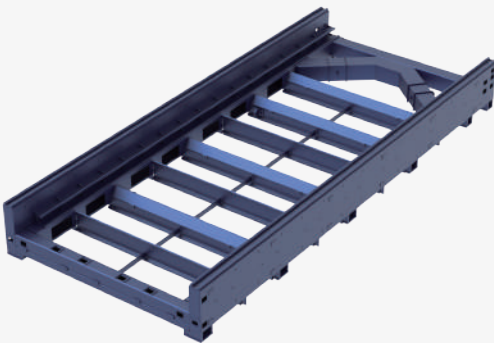
High-precision Transmission System

- Selected professional speed reducers, high-precision racks, guide rails and other accessories construct entire high-accuracy transmission system to ensure stable operations in long time.



Upgraded Matrix Machine Bed with Level-up Rigidity

- Brand-new matrix machine and welding design of the cross-section improve the rigidity of entire machine bed structure significantly and decrease the negative influence on machine bed.

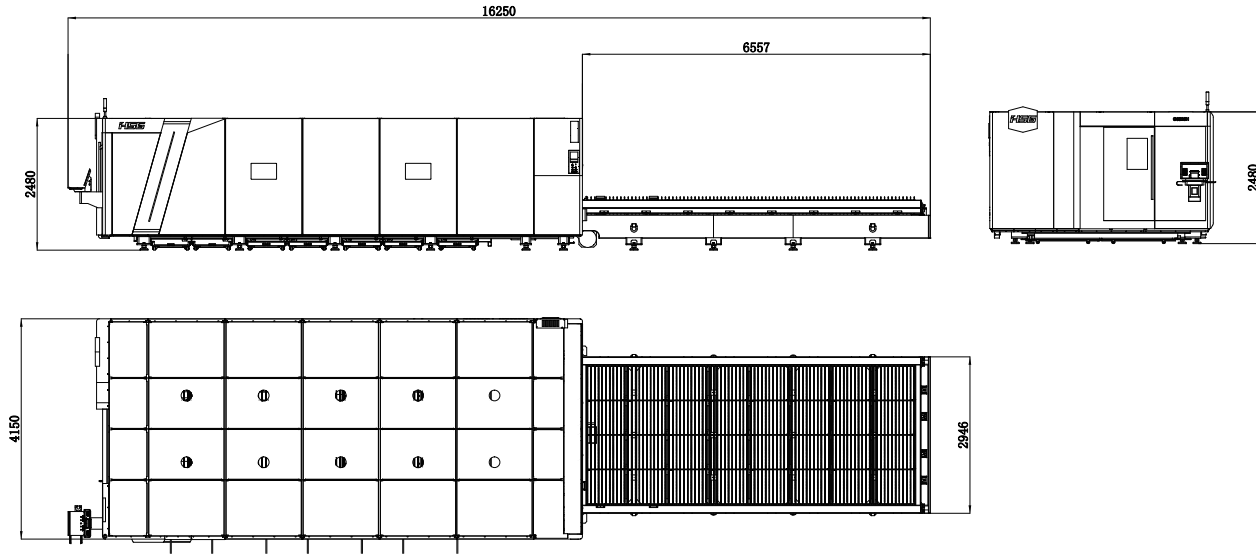




Machine Foundation

*The marked size has about 10mm error

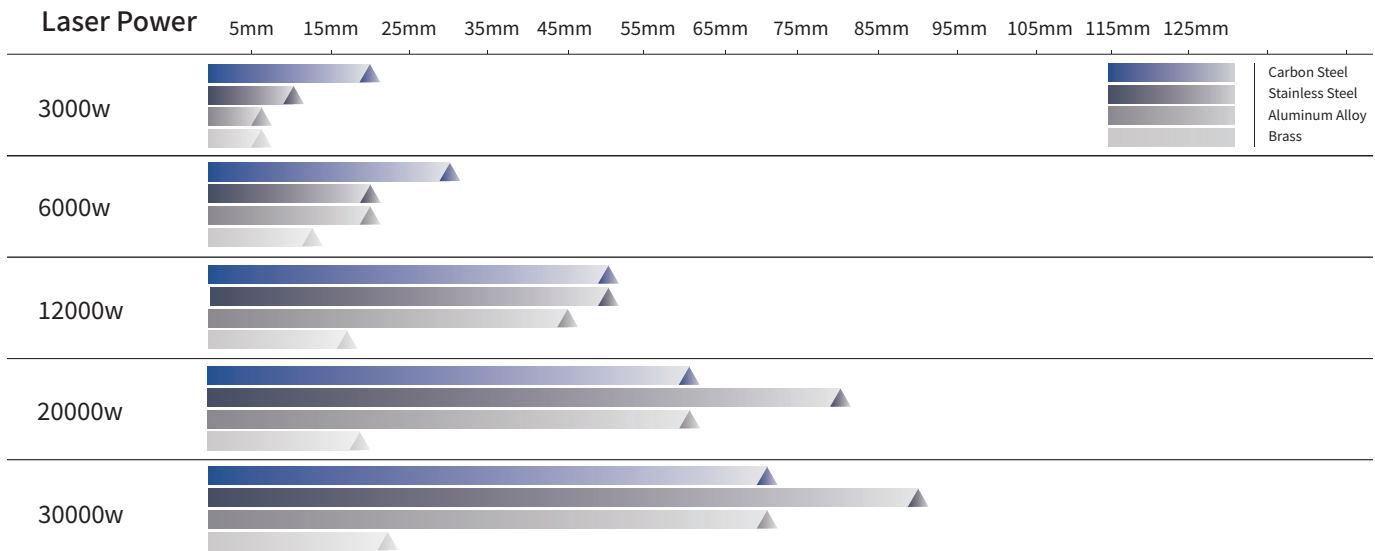
*Model: G6025H



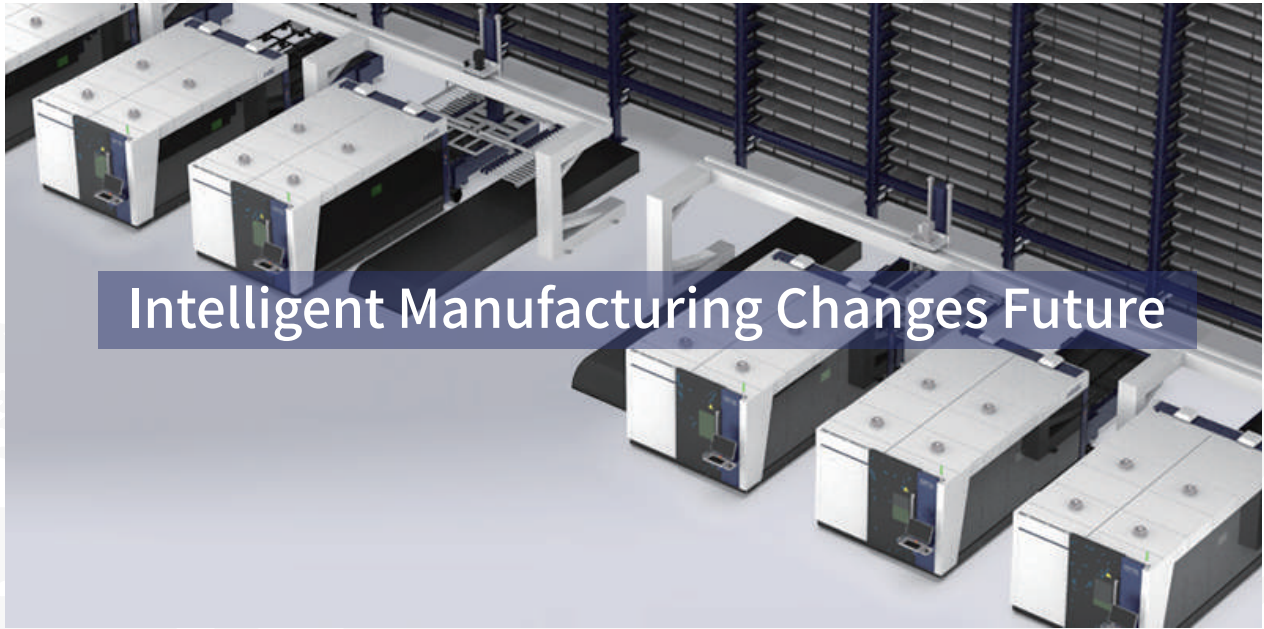
Cutting Samples



Cutting Capacity



The actual machines shall prevail and above data & pictures are only for reference.



Intelligent Manufacturing Changes Future



As a global enterprise, HSG sticks to providing professional and convenient service support to customers at home and board



Professional Training

Multiple technical training services and free operation training are provided for customers and dealers in a timely manner.



Efficient Support

Humanistic service model, online services and 7*24 hotline to offer solutions and assistance.



Optimized Transport

Multi-channel transport solutions and a professional transport solution team providing various transport cases to satisfy the demand of customers and save transportation fees.



Sufficient Accessories

Highly efficient accessory delivery service; multiple network inventories jointly respond to accessory demand, shortening customers' waiting times and accelerating production.



Careful Services

Domestic door-to-door service and free proofing, with over 100+ dealers providing efficient and convenient services.



Intelligent Manufacturing Changes Future



Website



Facebook



Youtube

Headquarters Add.: No. 4, Anye Road, Shunjiang Community Industrial Park,
Beijiao Town, Shunde District, Foshan, Guangdong, China
Website: www.hsglaser.com
Email: info@hsglaser.com
Tel: +86 757-66833906