

Panel Dividing Saw with Lifting Table NPL440D

(Twin pushers)
Nanxing Machinery
Guangdong China



Find more: www.nanxingmac.com
Follow us: Nanxing Machinery

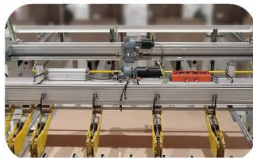


30% Efficiency up
2pcs power grippers+ 11pcs main grippers



Twin pusher crosscut

10% Efficiency up
Least waiting time



Twin program fence



Twin pusher crosscut & ripcut



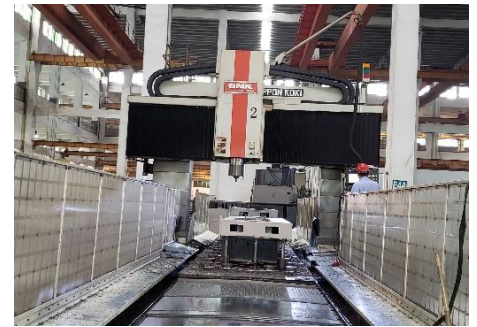
Max. 120mm cutting height

+ **= 40%↑**
Efficiency increase

Details

1. Processing

- Parts and machine body are processing by advanced CNC machine for metal work, just one positioning to finish most processing work, hence guarantees processing accuracy and reduce the vibration in the process;



2. Quality control

- Advanced measuring equipment and strict QC system help to make sure the machines and parts are checked and certificated by very high standard.
- All the machines are delivered with Quality Certificate signed by QC specialist.



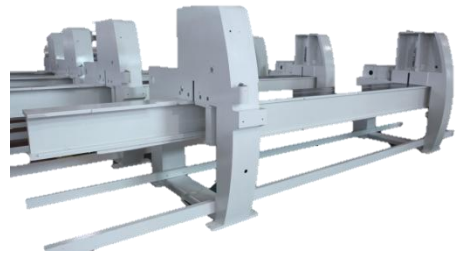
3. Professional assembly line

- Assembly is final and important step for better machine performance. Nanxing's professional assembly lines from machine body to small electrical components were by experienced technicians that guarantee machine standardization and performance.



4. Machine body

- Special designed machine body constructed with high tensile strength steel, must undergone properly metal fabrication process in order to make sure maintaining its accuracy and durability.



5. Steel table plate with air float

- High stiffness steel plate with air float for long service life, precision up to $\pm 0.03\text{mm}$, reducing the possible maintenance costs.
- Smooth surface avoids possible scraps on parts surface.



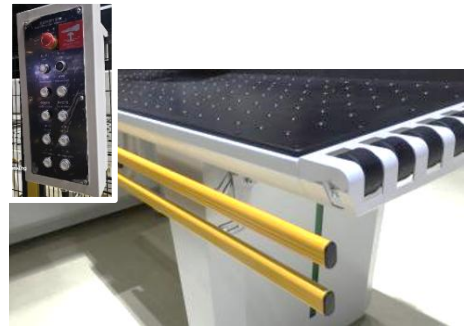
6. Air float feed table

- Full of air steel balls on table surface with a fan ensures a constant ease of panel stacks movement, the black table plate is rigid and wear proof ensuring best way to protect panel surface.
- 4 floating tables and can be moved easily
- Separate 4 pipes connected to 3 float tables with a 2.2kw air blower beneath the table supplies sufficient air. Flow rate: $5.2\text{m}^3/\text{min}$.



7. Switch bar

- Auto starting device which is convenient to operate and quick to start for cutting.



8. Rear feeding

Lifting Table

- Hydraulic rear feeding lift table with max 5t loading capacity. Optional to feed panels from left, or right side. Maximum stack height up to 680mm without digging a pit. Maximum stack height up to 1200mm with digging a pit. Max loading panel size: 2200 × 3650mm
- With separate controller to feed panel stack to lifting table.
- Precision of rear pusher bar handling panel within 8mm.
- Safety light barriers+forklift position+heavy duty column guiding roller



9. Twin program fence

- Gripper fence and pusher fence are working synchronously. Pusher fence will push the panels to stand by position while gripper fence are working to save time. Each cycle saves the panel pushing time about 10 seconds .
- Precision of rear pusher bar is within 8mm, panel feeding qty is accurate.



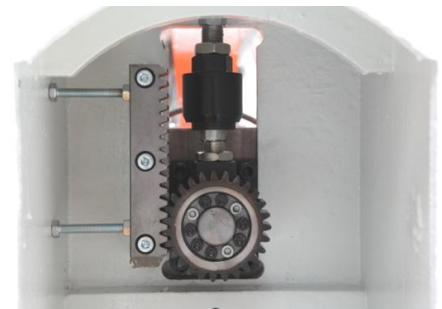
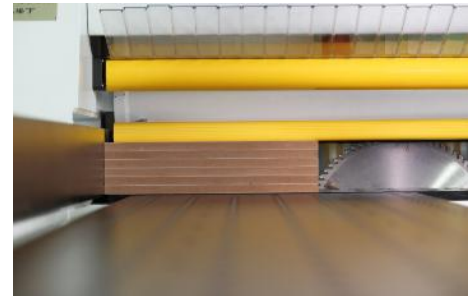
10. Top Side aligners

- When performing cross cut, 2 side alignments automatically compress the panel tightly from side to guide alignment for perfect square cut.
- Auto move to proper position for stand-by automatically based on panel size.



11. Pressure beam

- Pressure beam automatically self-adjusted according to the total height of panels, to shorten the travel range, hence higher efficiency.
- Evenly pressure applied on the whole panel surface, increase the pressure apparently, thus reduce the chipping of work piece edge
- Movement of pressure beam by precise rack and pinion on both sides.



12. Hand protector

- A protective device will fall down before cutting, and rise after cutting, machine would stop emergently if there is something underneath, that keeps operators from hurt.



13. Piano dust cover

- Piano type dust cover provides a completely enclosed blade guard and prevents flying dust and chips.



14. Twin pushers

- Independently working **2 sets of power grippers** plus 11 sets standard grippers (13pcs in total) of different functions built within machine, cutting boards synchronously in different sizes either both boards by crosscut or combined differently with crosswise and length cut, increasing cutting capacity by **30%**;
- AC 2kw servo gear box in “Swiss Gudel” brand guarantees the average force on rack and pinion of both sides for stable movement.



15. Working mode

Mode 1: One of power pushers lifts-small parts

Power grippers’ small panel width: 120-220mm

Main grippers’ big panel width:210-2440mm



Mode 2: 1-3 sets of main grippers lift-twin pusher crosscut

Power grippers’ small panel width:220-600mm

Power grippers’ maximum panel width: 600mm

Main clampers’ big panel width :210-2440mm



Mode 3: Twin pusher crosscut & ripcut

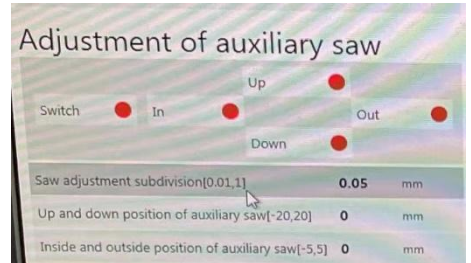
A gap in between



16. Saw carriage

- Saw carriage by 2kw servo motor along rack and pinion, automatically moved to fit based on the width of panel, reduces travel distance. Max forward speed up to **120m/min**, backward speed up to **120m/min**.
- Both main saw and scoring saw with independent movements of up and down, also main saw automatically self-adjusted minimizing the lifting height for efficiency besides making best finish.
- Quick change main saw blade, ideal design for operator.
- Scoring saw adjustment by one click in screen.
- **Max cutting height 120mm**
- ⚙ Main saw is 22 kw, 3910rpm/min, inner ϕ 60mm outer ϕ 380mm
- ⚙ Scoring saw is 2.2kw, 4150rpm/min inner ϕ 45mm outer ϕ 200mm

Tip: Saw blades are not included.



17. Dust collection

- Top and bottom dust collector reduce flying chips and dust, convenient working condition contributes to extend service life.
- Φ 150mm*3 + Φ 100mm*1



18. Automatic lubrication system

- The automatic lubrication system greases the main transmission components automatically that reduces the need of maintenance by operators.



19. Full covered safety fence with door

- Safer for operator



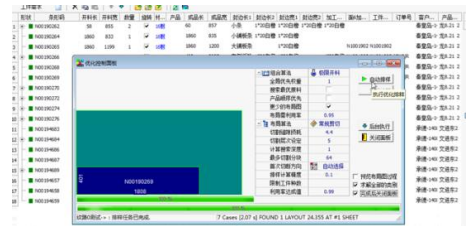
20. Machine control

- User-friendly HMI IPC coordinated with USB interface, network card, mouse and keyboard for easy operation; Chinese and English are available.
- Controlled by PLC Windows operating system and Nanxing's professional computer saw cutting software.



21. Optimizing software NXPareto (Office version)

- Professional optimizing software equipped within machine for high handling efficiency and convenient operation, other worldwide popular software also possible to be applied.
- Possible to generate report.



22. Operation software

- Powerful software so easy to use, including managing the work process with detailed reports, simulating cutting patterns, showing any error message, printing bar code and many more advantages, also user friendly HMI, making whole machine much reliable.
- I/O Monitor function, easy for trouble-shooting
- Support .cut, .saw .csv format to link to fit most furniture software;



23. Control cabinet

- High-quality electrical components offers longer service life and ensure good performance



Option

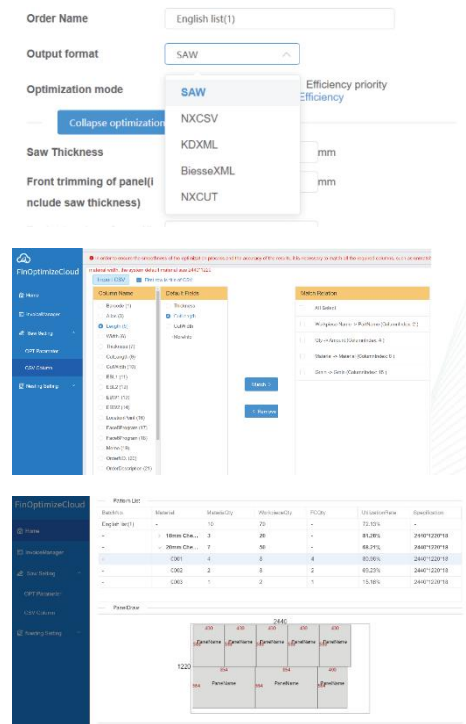
1. Printer

- Print label, label could be set in software



2. Fin-cloud optimize software

- Support more formats
- Easy operation, flexible to match title
- Work out best optimizing utilization rate by comparing more than 30 times computing via cloud server, save much material cost.



Technical Data

Max. cutting length:	4,400mm	
Max. cutting thickness:	120mm	
Gripper qty	(2+11)13 pcs	
Main saw	Motor power:	22 kw
	Diameter:	460mm
	Diameter of axle:	60mm
	Rotating speed:	3,910rpm

Scoring saw	Motor power:	2.2kw
	Diameter:	180mm
	Diameter of axle:	45mm
	Rotating speed:	4,150rpm
Saw carriage	Drive motor power:	1.5kw
	Forward speed:	120m/min
	Backward speed:	120m/min
Automatic feeding motor power:		2kw(AC servo)
Feeding speed:		85m/min
Rear feeding speed		60m/min
Dust collector		Φ150mm*3 + Φ100mm*1
Total power:		44kw
Working height:		980mm
Net weight:		13,080kg
Overall dimension:		10100×9600×2020mm (left back feed) 10100×9600×2020mm (right back feed)

**Thanks for the attention!*

The company continuous to improve the product specifications and design details, the specifications are subject to change without notice. 221125