

## Auto Edge Banding Machine NB6J



Find more: [www.nanxingmac.com](http://www.nanxingmac.com)

Follow us: Nanxing Machinery



### Description

- Heavy duty machine body and most mechanical machine parts are proceeded by advanced CNC machines for higher stability and longer service life without deforming;
- Merges numerous functions in one machine, including pre-milling, pre-heating, glue pot, snipping, end trimming, rough trimming, fine trimming, scraping and buffing, edge banding work can be done in one process.

Edge banding direction



pre-milling



pre-heating



glue pot



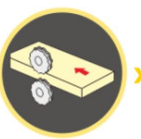
end trimming



fine trimming



scraping



buffing



bottom grooving



## Details

---

### 1. Machine body

- Heavy duty machine body is welded with thick laser-cut steel plates, then through processing of advanced CNC machine for metal work, hence enhance the stability and strength, reduce the vibration in the process; Machine net weight up to **2400kg- very heavy duty**;
- Frame body pass the **heat treatment** and **vibration aging treatment** to guarantees the whole service life without deforming.
- After **sandblasting** and **painting**, the top-grade CNC metal processing machines are used to process the body and components to make sure perfect quality and detail.



### 2. Professional assembly line

- Nanxing follow the SOP and set up the professional assembly lines. All the assembling is worked out by the experienced technicians that guarantee machine standardization and performance.



### 3. Quality control

- Advanced measuring equipment and strict QC system help to make sure the machines and parts are checked and certificated by very high standard.
- All the machines are delivered with Quality Certificate signed by QC specialist.



### 4. Top presser

- Aluminum pressure beam provides excellent stiffness and long service life.
- The height of presser beam adjusted automatically based on work piece's thickness just by inputting the work piece information on touch screen which saves a lot of time.
- Rubber rollers connected compactly in rows press work pieces tightly to make sure the work pieces could convey without displacement, wearproof.



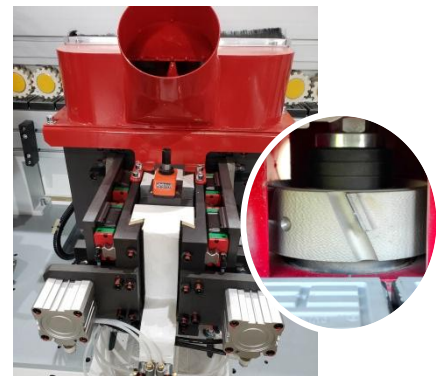
## 5. Conveyor

- Long straight semicircle guide rail is through hard treatment before installation, conveyor piece can perfectly contact with the guide rail, almost no gap.
- Two steel rods of high rigidity connect the “stretched support conveyor” to the machine body to ensure the stable conveying of the wide work pieces. Max stretching width is 600mm.
- Long steel guiding plate of high thickness and rigidity for longer service life. Position is easy to adjust.
- The conveyor motor makes variable frequency starting possible, very stable and equipped with braking system. Easy to install or uninstall.



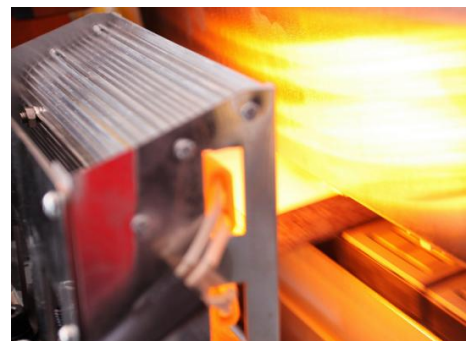
## 6. Pre-milling

- Pre-milling with **diamond cutter**  $\varnothing 125 \times H35 \times \varnothing 30$  Z3+3 simply handles the work piece edge before gluing offers optimum basis of binding effect.
- Two motors controlled pneumatically, milling panel edge intermittent.  $2 \times 3.7\text{kW}$  motors; 200Hz  
Rotating speed: 12,000 rpm.
- Fully covered dust cover.



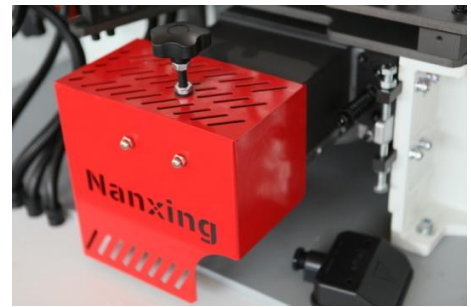
## 7. Pre-heating

- Warm the work piece edge, the glue could well melt during gluing, especially suitable for wet or cold zones.



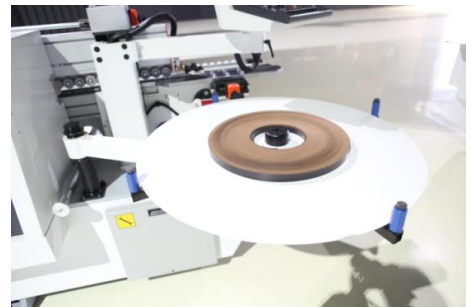
### 8. Glue pot

- Traditional way of gluing is stable, **Teflon coated** glue pot for EVA hot-melt glue has a high capacity. (about 5L). Easy to clean.



### 9. Edge tape supporter

- Edge tape supporter of high quality is in proper height for smooth edge tape feeding and longer service life.



### 10. Snipping

- Snipping air cylinder with electric controlled switch to cut the edge tape properly.



### 11. Pressure rollers

- One pre-pressure roller of 100mm diameter coordinates well with four post rollers make edge tape pressed on edge surface firmly.



### 12. Lubrication system

- Lubrication pump for daily maintenance, greasing work of guiding rail just by pulling the handle. Easy and save time.





### 13. End trimming

- Linear guide way structure at an angle of 45 degrees with 2 motors 0.35kw 200hz 12000rpm/min to remove the extra edge tape on front and back.  
High precision linear guides – for very high repeatability.
- 2pcs of saw blades (105\*3\*22\*24Z) with independent cover.
- 0-15 degree adjustment



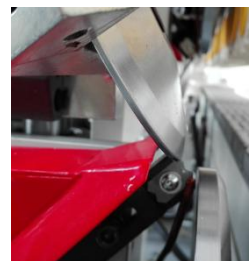
### 14. Fine trimming

- 2 motors (power: 0.55kw; frequency: 200hz, rotating speed: 12000rpm/min). 2 fine trimming milling cutters (Standard: R1.5);
- Guiding board with high stiffness and independent cover on cutters for longer service life.
- Motor angle can be adjusted to most suitable angle for best R result.



### 15. Scraping

- Scraping the edge by R1.5 cutters (Standard), making edge banding more beautiful.
- Air blowing device blowing toward the scraping cutters on upside and underside for cleaning the scraps on cutter surface and cooling.



### 16. Buffing

- Buffing by dual screen cloth structure is the last step to make perfect edge banding to make the edge shining, more stable.



### 17. Safety device

#### Feeding protector and thickness detection

- Protector prevents any possible accidents and ensures safety of operators, automatic monitoring abnormal operation.
- Work piece thickness detection, if work piece thickness over the limited position, conveyor will stop at once to reduce machine damage.



#### Interval feeding detection system

- Keep work pieces in proper distance for max edge banding performance.



#### E-STOP

- To stop running at once, guarantee operator life safety.

### 18. Dust collection

- Independent suction hood ( $\varnothing 125\text{mm}$ ) on processing units are fully covered: Pre-milling\*1; Rough trimming \*1; Fine trimming \*1; Scraping \*1, totally 4 sets.



### 19. Remote switch & indicator light

- A switch enables the operator to stop or start the machine anytime during the process that provides the max. convenience to adjust or test the machine.
- Operation indicating light, the operation status of the machine is available at a glance.



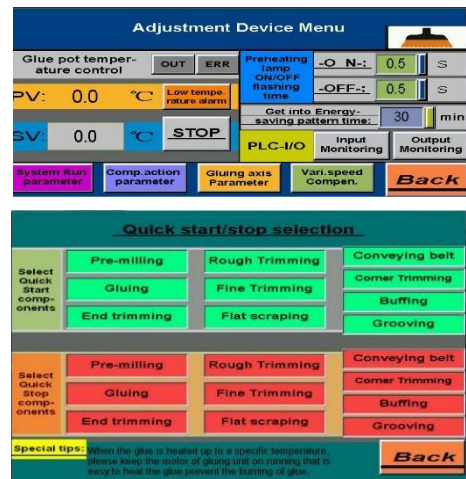
**20. Control system**

- 10" touch screen. Operation interface is intuitive and simple, available to control each component independently easy for testing and commission work.
- System languages: English, simplified Chinese, and traditional Chinese.



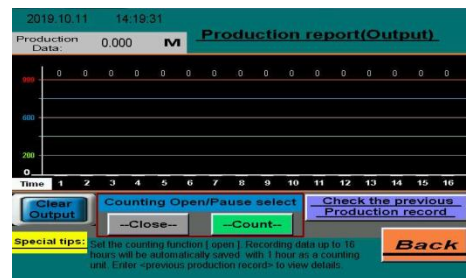
**21. Energy saving**

- Stand-by mode automatically turned on when machine stops working for a certain period (according to setting time) in order to save energy. Only one click to re-start production.
- One-click Selection, quick start/stop.



**22. Production report**

- Daily production included workpieces number and length is available at a glance





### 23. Electric equipment

- PLC control, input voltage 380v, 50Hz (Standard).
- The position can be calculated precisely by encoder
- Each processing unit is controlled and protected by independent frequency converter with motor braking function.
  
- Most of electric components of the machine adopted international brands for high quality and generality.
  
- Good documentation, each wire has a unique code label which offers max convenience for troubleshooting and online support.





### Technical Data

---

<b>Panel length:</b>	≥120 mm
<b>Panel width:</b>	≥40 mm
<b>Mini. Panel size:</b>	120×40mm
<b>Panel thickness:</b>	10-60 mm
<b>Edge tape thickness:</b>	0.4-3 mm
<b>Feeding speed:</b>	16/20/24 m/min
<b>Power supply:</b>	380 V; 50 Hz
<b>Air pressure required:</b>	0.7MPa
<b>Operation system</b>	10" touch screen
<b>Dust collector</b>	Φ125mm×4
<b>Total power:</b>	17.5 Kw
<b>Approx. weight:</b>	2,400 kg
<b>Overall dimension:</b>	6,600*1,450*1,650 mm

*\*Thanks for the attention!*

*The company continuous to improve the product specifications and design details, the specifications are subject to change without notice. 200410*