

# RW Winder

## Winding of film and nonwoven

Automatic winding of medium and heavy gauge film.

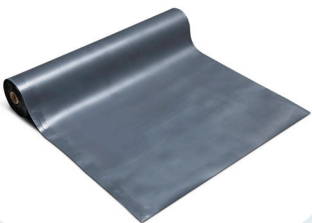
→ For winding of large bags, industrial film, nonwoven or similar webs

→ With or without cores

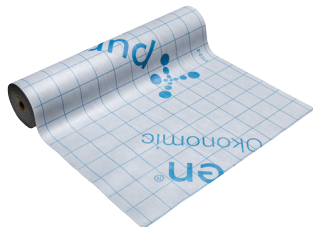


} RW - Roll Winder }

Damp proof membrane



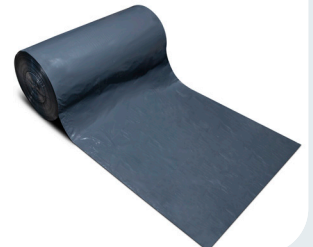
Roofing membrane



Crop film




Construction film



**Headquarters**  
Roll-o-Matic A/S  
Damsbovej 12  
DK-5492 Vissenbjerg  
Denmark  
+45 6611 1618

**North America**  
Roll-o-Matic Inc.  
3001 Midpoint Drive  
Lancaster  
TX 75134 - USA  
+1 (435) 237 7408

**Latin America**  
Roll-o-Matic  
Varsovia 36, Oficina 1208  
Colonia Juárez, Cuauhtémoc  
06600 Ciudad de México  
+52 56 1111 9911 

# RW 1600/2000/2200/3200

The Roll-o-Matic RW-series is designed for medium and heavy gauge film, non woven or similar. For winding of large bags or industrial film, e.g. for the agriculture or construction sectors. The RW winder can be set up both in-line with e.g. an extruder or out-of-line with an unwinder.

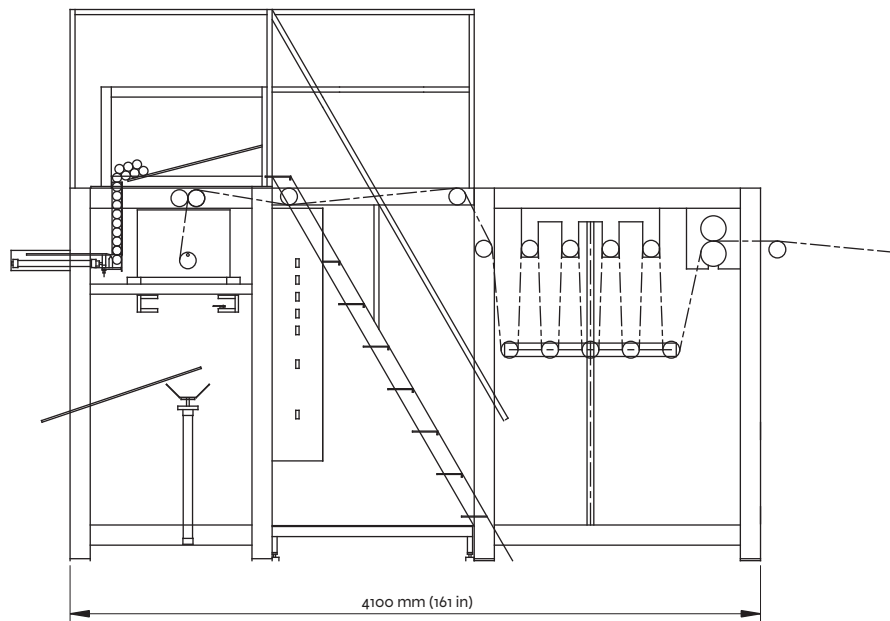
Web cutting is done in stop position, which means that the web will be cut at a right angle to the edge of the web with a clear cut even on heavy gauge application. Winding can be done with cores or coreless\*, and the cores require no tape or similar pre-gluing.

\*) The RW 3200 is only available for production on cores.

## Technical data for RW

	RW 1600	RW 2000	RW 2200	RW 3200
Film thickness	From 10 µm to 4x 300 µm	From 10 µm to 4x 300 µm	From 40 µm to 4x 300 µm	From 40 µm to 4x 300 µm
Min. winding width	500 mm (19.7 in)	500 mm (19.7 in)	700 mm (27.5 in)	1600 mm (63 in)
Max. winding width	1600 mm (63 in)	2000 mm (78.8 in)	2200 mm (86.6 in)	3200 mm (126 in)
Max. film speed*	120 m/min (395 ft/min)	120 m/min (395 ft/min)	120 m/min (395 ft/min)	120 m/min (395 ft/min)
Max. roll changes	3-5/min	3-5/min	3-5/min	3-5/min
Max. roll diameter	300 mm (11.8 in) or 500 mm (19.7 in)	300 mm (11.8 in) or 500 mm (19.7 in)	500 mm (19.7 in)	500 mm (19.7 in)
Cores	With or without cores	With or without cores	With or without cores	Only with cores
Min./max. core inner diameter	38/76 mm (1.5-3 in)	38/76 mm (1.5-3 in)	38/76 mm (1.5-3 in)	76 mm (3 in)
Max. roll weight	300 kg	370 kg	410 kg	400 kg

\*) Depending on film quality and thickness.



RW Winder

Watch video of RW Winder

