



**Hangzhou Datian CNC Machine Tool Co.,Ltd.**

DATAN CNC East multiple track,03 provincial roads , Xiaoshan,  
Hangzhou,311201,P.R.China.

<http://www.cncdatan.com>

Tel: +86 18814876968

Tel: +86-571-82402741

## Vertical Machining Center MD855

### SPECIFICATION





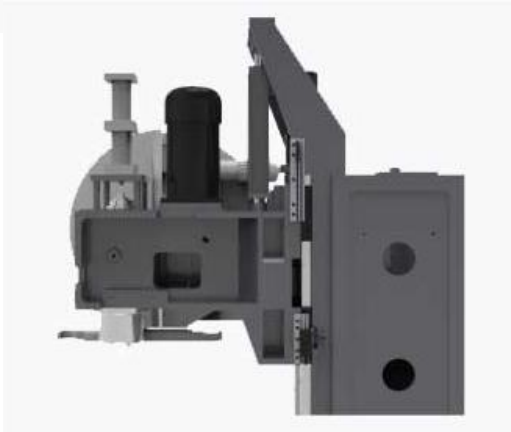
**Innovated combined ATC Column  
Say “Bye” to Distortion in ATC**

Avoid the distortion in A.T.C. that caused the tools and spindle not in proper alignment

Avoid the change in accuracy in worktable

Improving 40% in column rigidity

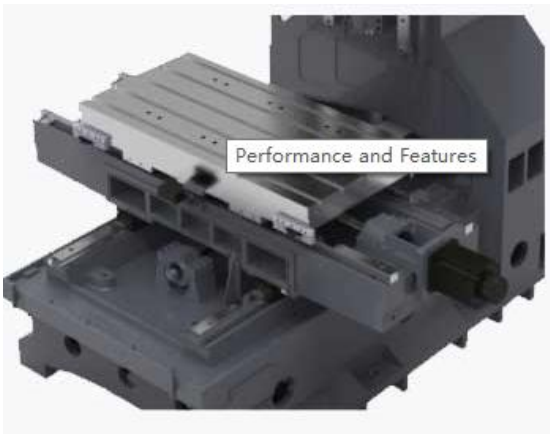
Rolling structure in Z axis



**Large Torque(patent)**

1:1.6/1:2.5/1:4 optional

**30~100% more in efficiency**



**High Cost-efficient(structure design)**

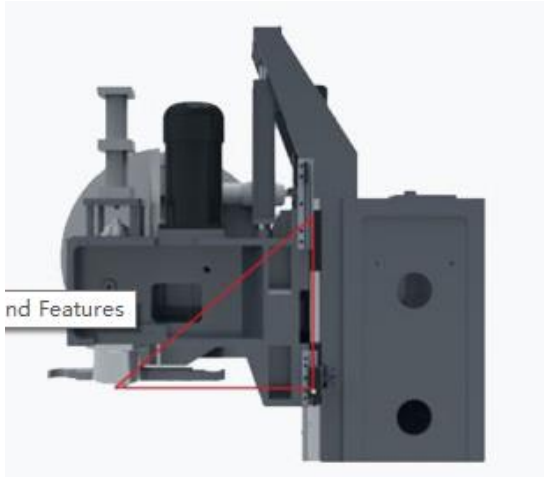
It adopts 6 rams designs in worktable,20% rigidity more than normal design in worktable

Materials are in superior quality, best cost-efficient



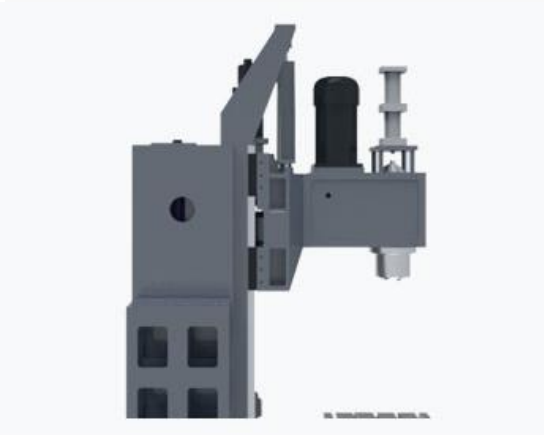
**Wide base + Wide range guiderail**

High rigidity machine needs strong base supporting



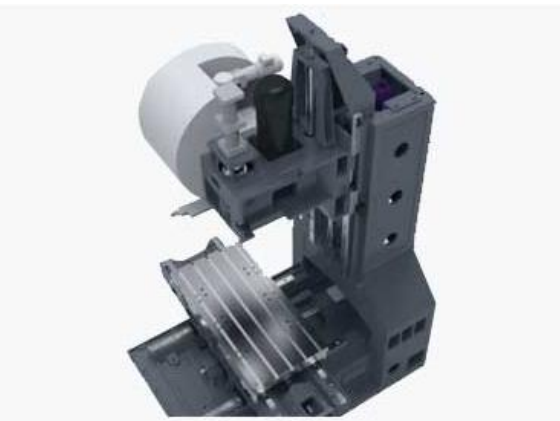
**Three Guiderail in Z axis gains high rigidity**

Avoid the accuracy loss caused by worn guiderail, it keeps the machine in well maintenance, suitable to high speed machining



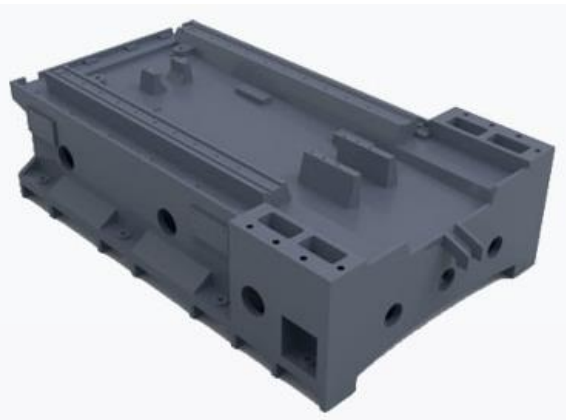
**10% less in throat Depth  
20% more in Rigidity**

Best solution in improving rigidity for Z axis by short Throat Depth  
Fewer quivers on spindle box in heavy load cutting



**Nitrogen Balance**

It is more stable when Datan CNC adopts the new Nitrogen Weight Balance system  
Now it is more fit to high speed machining



**High stability by 8 supporting feet**

This machine has 8 supporting feet plus thick honeycomb machine body structure, less distortion caused by weight, make the base more stable



(2) Reference specification:

Model No.		MD855
Capacity	X axis travel/mm	800
	Y axis travel/mm	550
	Z axis travel/mm	550
	Spindle nose to table surface/mm	120-670
	Spindle nose to column surface/mm	550
Worktable	Table size/(L*W)	1000*550
	Max load on the table/kg	800
	T-slot size/mm	18*5*100
Spindle	Spindle speed/rpm	4000/6000
	Spindle taper/spindle shank	7/24 Taper No.40
	Max spindle inner diameter/mm	Φ70
	Spindle motor/kw	7.5/11
Feed rate	X,Y,Z rapid traverse/M/min	36/36/30
	Max cutting feed rate(M/min)	10
	Guide rail types	Roller linear guide rail
A.T.C	Tool storage capacity/pc	24 Tool
	Max tool diameter(adjacent tools)/mm	Φ150(80)
	Max tool length/mm	300
	Max tool weight/kg	8
	Tool change time(T-T)/sec	2.5
Accuracy	Positioning accuracy/mm	±0.01
	Repeatability positioning accuracy/mm	±0.005
Machine size	Machine height/mm	2612
	Space requirement(L*W)	2450*2200
	Net machine weight/kg	5800
	Power requirement/KVA	15
	Air pressure(kg/cm <sup>2</sup> )	5-7
	Drive motor/kw	1.8/1.8/2.5
	Control system	FANUC Oi MF-5

Machine Configuration

Machine configuration	<ol style="list-style-type: none"> <li>1.Control system: FANUC Oi MF-5</li> <li>2.Arm type A.T.C system(24 tools)</li> <li>3.Screw type chip removal system</li> <li>4.heat exchanger</li> <li>5.triaxial screw rod with function of pre-pull</li> <li>6.automacti lubrication system</li> <li>7.work&amp; alarm lamps</li> </ol>
-----------------------	---



## Hangzhou Datian CNC Machine Tool Co.,Ltd.

	8.rigid tapping 9.steel telescopic covers for guide rails 10.dirt-proof electrical cabinet
Machine configuration	11.paralell and tool box 12.220/380v,50HZ transformer 13.belt-type 4000/6000 rpm spindle, 7/24 Taper No.40 , 14.spindle blowing device 15.fully enclosed splash guard 16.device for clamping/releasing tool 17.cutting fluid system 18.hard guide rails

### Main Parts Suppliers:

No.	Item	Brand	Origin
1	CNC Controller	FANUC Oi MF-5	Japan
2	Spindle Motor	Servo Motor	Japan
3	XYZ Axis Motor	SYNTEC Servo Motor	Japan
4	Spindle Bearing	NSK	Japan
5	XYZ Axis Bearing	NSK	Japan
6	XYZ Ballscrew	SNC/PMI	Taiwan or Germany
7	XYZ linear rail	SNC/PMI	Taiwan or Germany
8	Spindle Unit	VOLIS	Taiwan of China
9	ATC	AIMACH	Taiwan of China
10	Tool Cylinder	HAOCHENG	Taiwan of China
11	Auto oil lubricator	HERG/ BIJUR	Japan/ Nanjing
12	Heat Exchanger	KAUKAN	Taiwan of China

### Optional:

1. CNC Controller: SEIMENS 828D
2. Spindle Speed, BT40 6000  
BT50 5000
3. Spindle Oil Cooler
4. Chain type chip conveyor
5. change to Armless type ATC Or without ATC
6. Cooling thru Spindle 20 bar 30 bar 50 bar
7. Auto. Power off. Function
8. Column height 100mm 200mm
9. XYZ Hard Scale
10. 4<sup>th</sup> 5<sup>th</sup> axis and others optional you need

### Warranty:

12 months from the date of the machine arrived at the buyer's port.





**Hangzhou Datian CNC Machine Tool Co.,Ltd.**

## **Installation & Debugging:**

About the service in buyer's factory available if buyer load the cost such as the travel, food and accommodation in buyer's side.



Datan CNC with the production base in Hangzhou, the production network expands to Shenyang, Dalian, Jiaying, own superior scale in CNC field, Datan is a reliable brand you can trust.



50 years in technology, 20 years in market experience, Datan have owned an experienced team in research, production, and sale, can provide you expert service in CNC machine.



Over 100 patents, 12 patents in invention, pioneer in CNC field, won many awards in world competition, show Datan's strength in CNC technology.

Not only limit to Datan products, we can provide you more in machine purchase, technology consultancy, and other service you need in machine field.



**Hangzhou Datian CNC Machine Tool Co.,Ltd.**

## QUOTATION

TO : \_\_\_\_\_ Dated: \_\_\_\_\_

Item: \_\_\_\_\_ CNC Machining Center MD855

No.	Model	Main Configuration	Unit Price	QTY	Total Price	Note
1	MD855	FANUC Controller	31,500	1	31,500	FOB

**Note:**

1. This offer is on **FOB Shanghai/Ningbo** Basis
2. Packing: Standard Export Package / Standard Export Wooden Case
3. Quantity: as per yr requirement
4. Payment: T/T 30% in advance to arrange production and balance before shipment.
5. Shipment: Delivery the goods in 30 working days after receiving yr deposit.

***DATAN CNC***