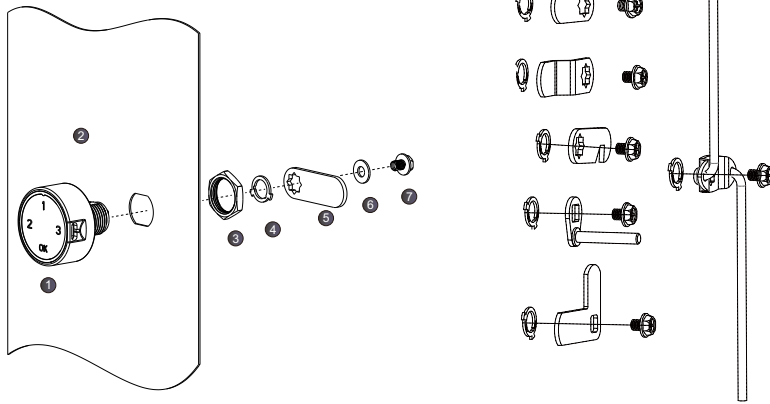
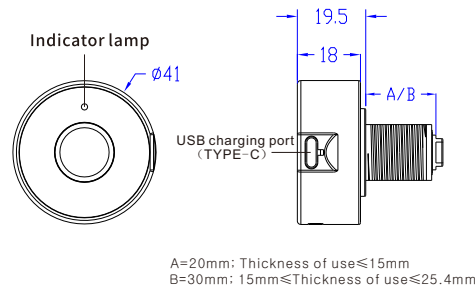


Assembling Drawing



- 1 Lock
- 2 Door panel Wood: 10-22mm / Iron: 0.5-12mm
- 3 nut x1(M16)
- 4 fixed plate
- 5 straight plate
- 6 Spacer for accessories x1(Ø12mm)
- 7 bolt x1(PWM4.0*8mm)

Product size



Installation Steps:

1. Drill the installation holes on the door as following dimensionl.
2. Fix the lock and rare part as the installation drawing.

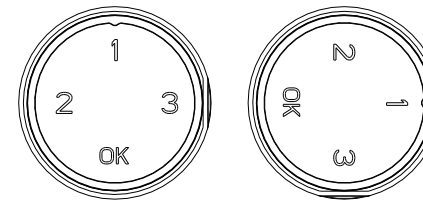
Note:

1. The connection fittings should be installed at an angle of 90 degrees clockwise, for the unlocking state.
2. Door panels using a thickness of 0.5-25.4mm.

Detail instruction refer to APP help.

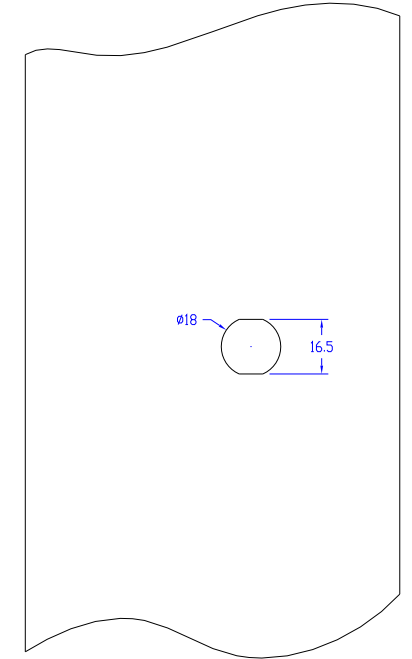


APP下载



Locked

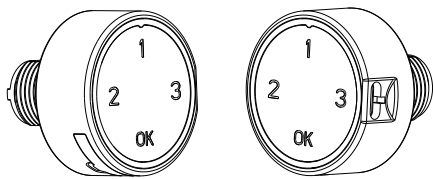
Unlocked



INSTRUCTION MANUAL

Smart password lock

103-6 Serie



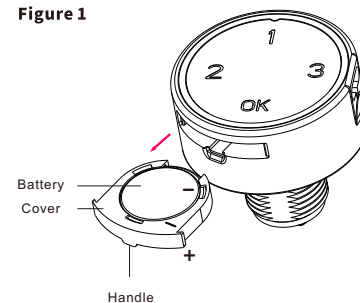
To ensure management and decoding permissions, install the APP and register the decoding lock as soon as possible!

CE/FCC/PSE/ROHS/SGS

Contents

1. Battery Installation
 - 1.1 The first using
 - 1.2 Replacing battery
2. Operating Instruction
 - 2.1 unlocking
 - 2.2 locking
 - 2.3 Change code
3. Other Instruction
 - 3.1 Acousto-optic notification
 - 3.2 Technical Parameters
 - 3.3 APP

Figure 1



Steps:
Use your fingernails or other tools to pull out the cover at the handle, and then pull out the cover along the red arrow.

1. Battery Instruction

1.1 The first use

Each new lock has a built-in new battery at factory and white insulation slices to cut off the connection in order to prevent power consumption during transportation. When first using it, only need to pull out the white insulation slices and hear the sound of smart lock, which means it starts working.

1.2 Replacing battery

When the battery is in low power or shows no power/battery, remove the battery cover as figure 1 and insert new battery to work (Figure 1 shows). Corresponding marks will guide user to avoid wrongly placing battery.

2. Operation Instruction

2.1 unlocking:

“user code + OK” Rotate the knob to unlock

Factory default code is 1, user input inputs “1 + OK” and hear a long sound, rotate the knob to unlock the lock within 3 seconds. User can change the code according to below 2.3.

2.2 Locking:

Anticlockwise rotate the knob to the exact position to lock

Any time anticlockwise rotate the knob to the exact position, it can be locked.

2.3 Change code:

“old code + OK + OK + new code (1-12 digits) + OK”

Input “Old code + OK + OK + New code + OK” and you hear a long sound, which means the new code is set successfully. Example: change the default code from 1 to 123, input “1+ OK + OK + 123 + OK” and when you hear a long sound, the new code will come into effect.

2.4 Forgot password:

Scan code to register APP, with decoding service.

3. Other instructions

3.1 Acousto-optic prompt

Serial number	Name	Sound/light synchronous indication	Meaning
1	Unlock	Long Sound, The green light is long bright	Unlock successfully
2	Operation successful	Long Sound, The green light is long bright	Correct operation, unlock/register successfully
3	Error	Double ring, Red light shining	Operation error, invalid input
4	Insufficient power	Ticketing three sounds	Power shortage, please charge

Note: When the power is insufficient, the lock can be unlocked for about 50 times when the power is exhausted. Please charge as soon as possible.

3.2 Technical parameter

Operating voltage	DC2.3-3.3V
Battery Specifications	CR 2032
Standby current	≤ 3uA
Maximum current	≤ 5mA and time of duration ≤ 35ms
Battery life	1-2 years of work (Japan) 30-50 unlocks per day
Operation temperature	-5°C ~ 50°C
Relative humidity	20°C ~ 80°C
Composition material	Zinc alloy / ABS
Installation aperture	Suitable for diameter 18mm
Plate thickness requirements	0.5mm-25.4mm
Certification detection	CE/FCC/PSE/ROHS/Salt Spray Test

3.3 APP

3.3.1 Combination lock APP Self-help management

Please scan the following qr code, go to download and register the member according to the relevant prompts to realize the registration /management of the password lock.

The detailed help will be explained in the APP.



APP