



PowerWIN

Made by experience



PowerWIN

Production of solid wood, doors and windows

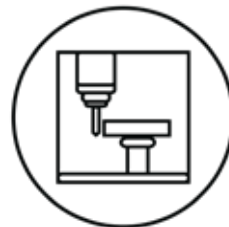
The software solution for the parametric design of solid wood doors, flush doors, shutters, jalousies, standard and special doors and windows.



**2D Parametric
& 3D**



**Windows
and Doors**



**Simulation and
Collision Detection**

Software levels

PowerWIN Home

For the design of windows and doors

PowerWIN Door

For the design and production of solid wood and engraved doors, hardware included

PowerWIN Light

For the design and production of the most common windows and doors, hardware included

PowerWIN Standard

For the design and production of any window and door, hardware included

Additional modules

Connection to Maco, AGB, Siegenia, Ferco and Roto

Multiple windows/doors

Complex windows/doors with profile change

3D profiles and 3D section calculation

Maco LIBRA

Engraved doors

Aluminium profile cutting list

Jalousies and shutters

Batch Production

Business

Double casement window "Kastenfenster" type

3D Simulation and Collision Detection

Cross-cut saw control

Molding machine control

Frame press control

Angular machine control

Production line control

5 axis aggregate control

Features

PowerWIN is the software solution for the parametric* design and production of any window and door: windows, French doors, solid wood doors, jalousies, shutters, etc.

Shapes

- Rectangular
- Rectangular with arched sashes
- Rectangular "false arch"
- Horizontal and vertical rectangular tilting window
- Rectangular lift and slide
- Trapezoidal
- Trapezoidal with arch
- Triangular
- Triangular with arch
- Segmental and round arch
- Gothic
- Porthole: round, elliptical, oval
- Arch three centres made by arcs and by ellipse
- House-shaped
- Chamfered
- Point by point, from a template, DXF import and internal CAD design



Openings

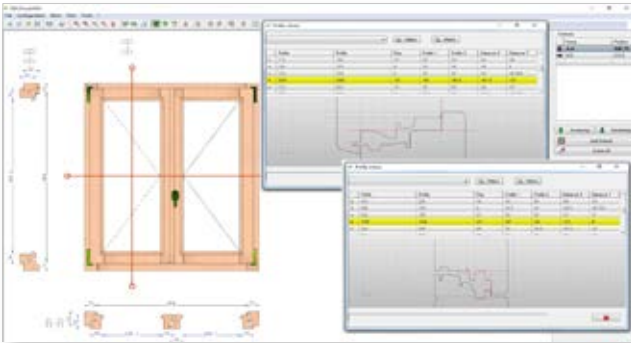
- Internal
- External
- Asymmetric



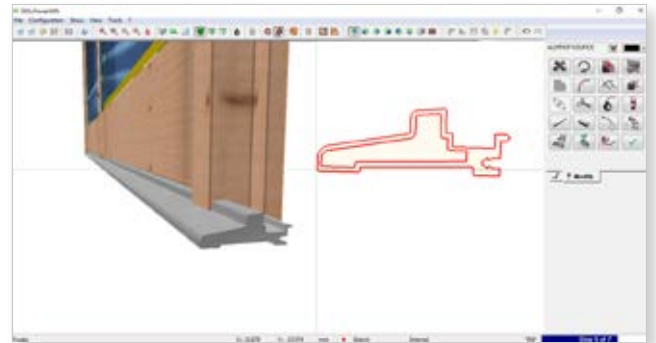
* Point by point and complex windows and doors, windows from DXF projects and from internal CAD are not parametric.

Casement and Sashes

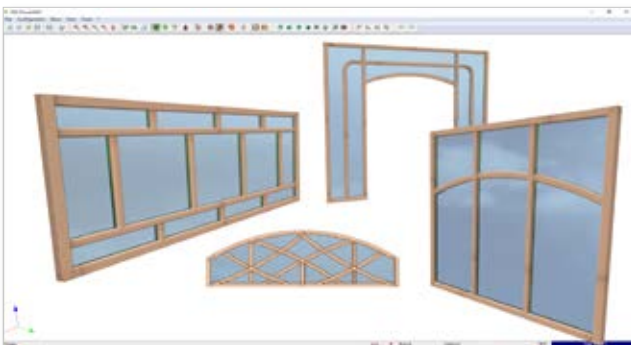
Dimensions and overlaps



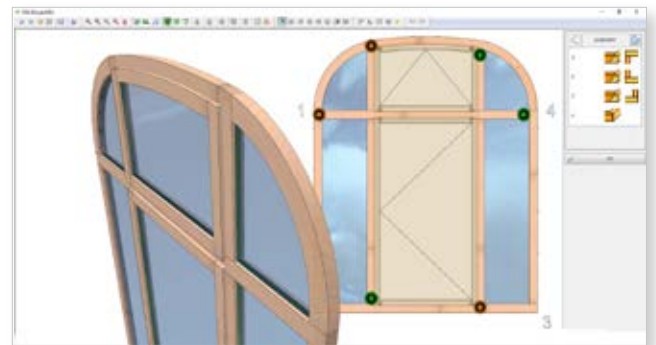
Thresholds



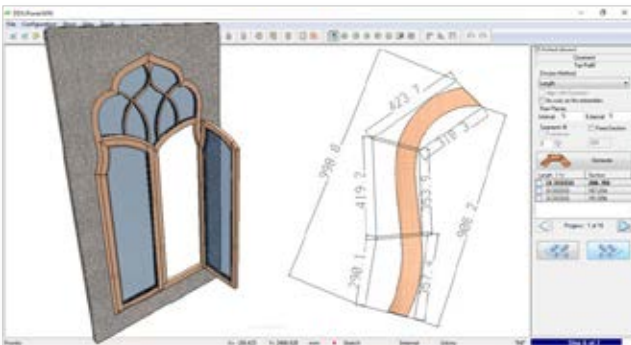
Fixed windows



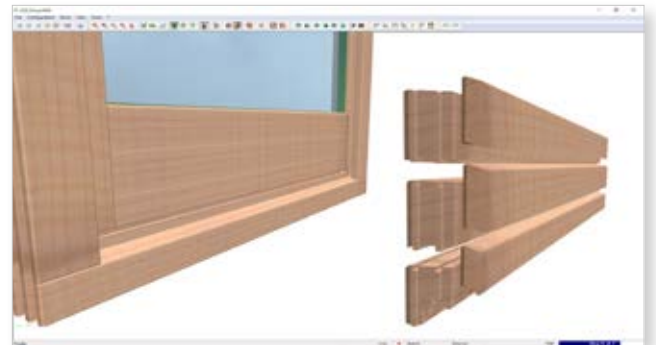
Fixed and opening sashes in the same casement



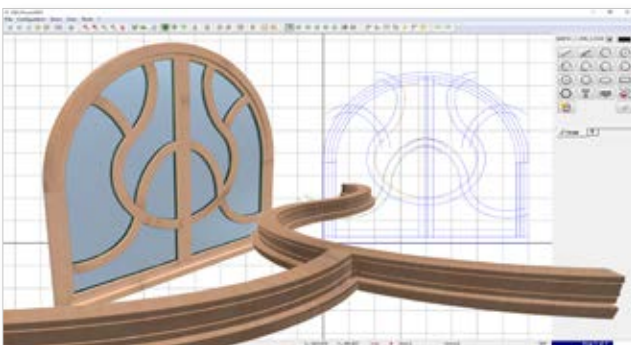
Templates from DXF import and from internal CAD



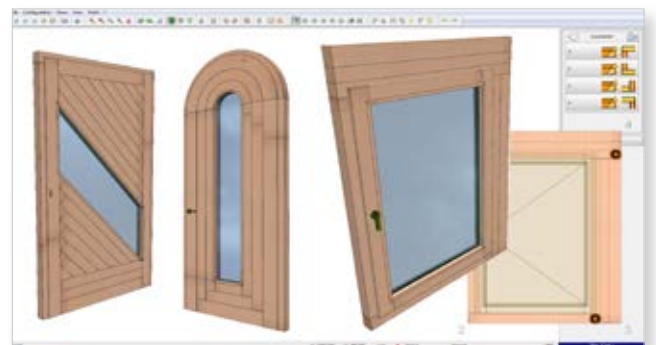
Baseboards



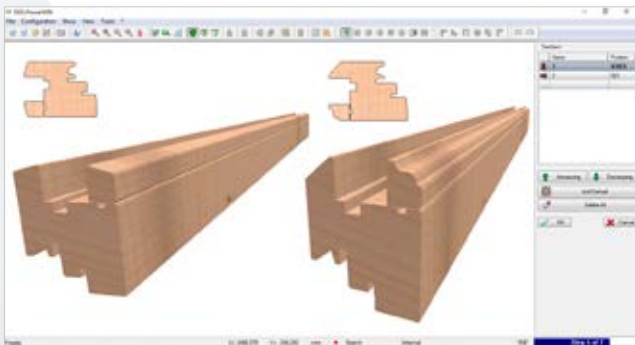
Special rails and stiles shapes



Internal and external side baseboards



Special profiles

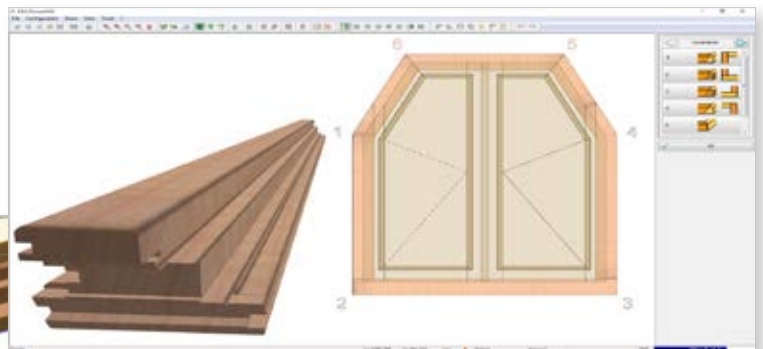


Profile change "Falzwechsel"



Junctions

- Open and closed tenon
- Finger joint
- Counterprofile
- Mechanical assembly
- Customized



Parametric dowels

Dowels for the junctions are parametric and any knot can be different from the others. The software adapts automatically number, depth, angle and position of the holes depending on section, thickness, profile and shape.



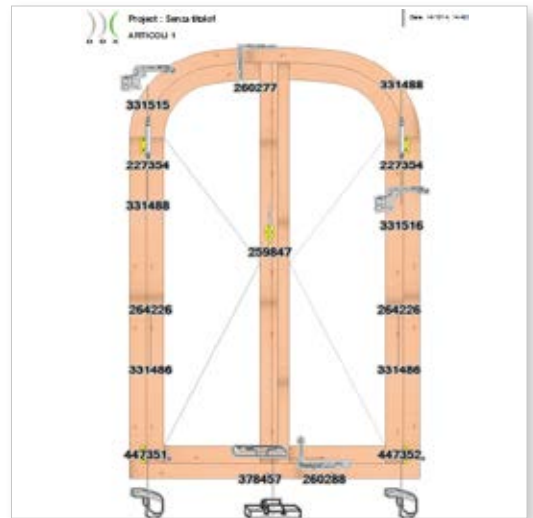
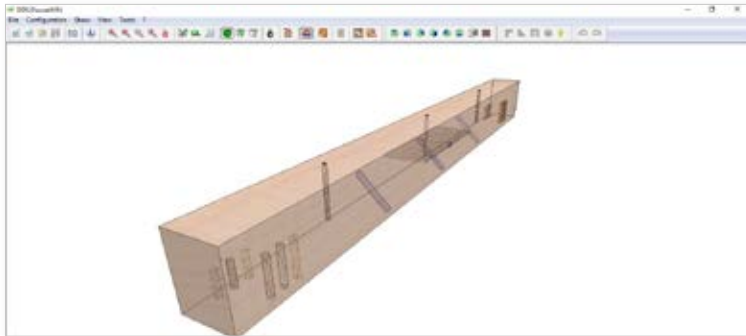
Hardware module

It is possible to define a parametric library of hardware. You can configure your hardware library by choosing among the available models or you can define your customized hardware machining.



Accessorial machining management:

Drilling for painting, wall mount, water drain, ventilation, grooves for clips, etc. with hardware list to send to your supplier.



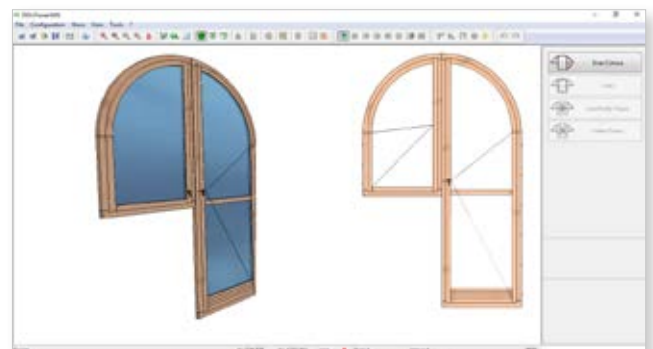
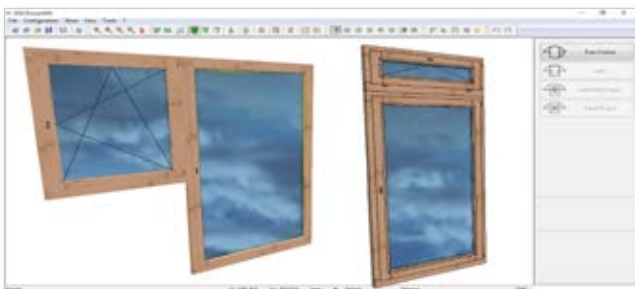
Connection to Maco, AGB, Siegenia, Ferco and Roto

This module allows the connection to MacoWIN software of MACO, AGB4K of AGB, Siegenia, Ferco and Roto pool file to get the hardware list with the code and the price of each item of the window/door, avoiding waste of time to manually add each item.

In case of other hardware suppliers you can use the hardware module of PowerWIN to define the hardware items.

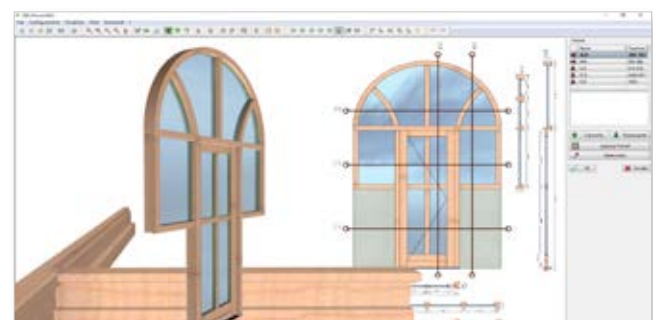
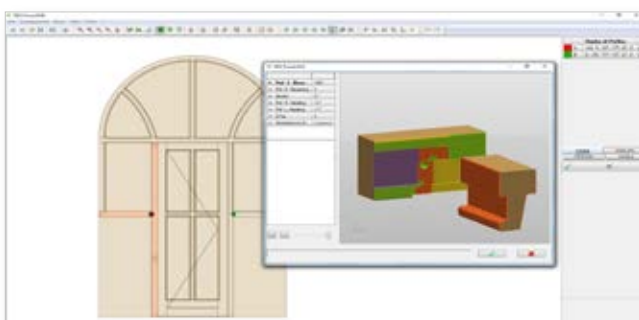


Multiple windows and doors



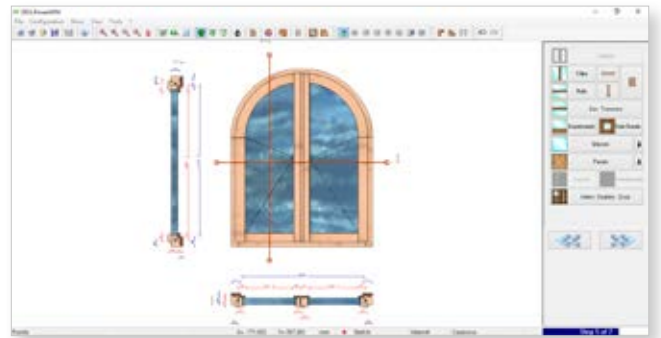
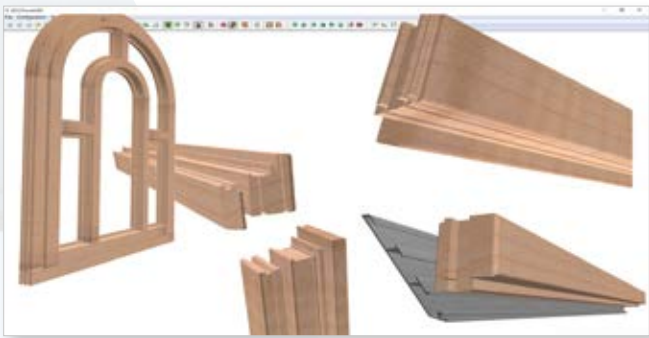
Complex windows and doors with profile change

Specific for windows and doors commonly used in Northern Europe: you can realize a large number of profiles with a limited number of tools.



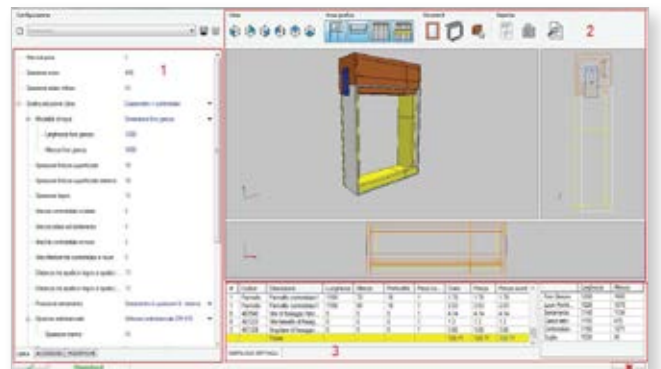
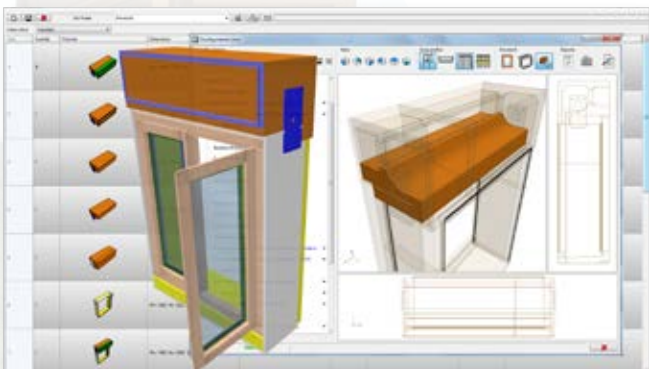
3D Profiles and 3D sections calculation

3D graphic view of the window/door with the real profiles, including automatic calculation, printout and export in DXF format of the vertical and horizontal sections.



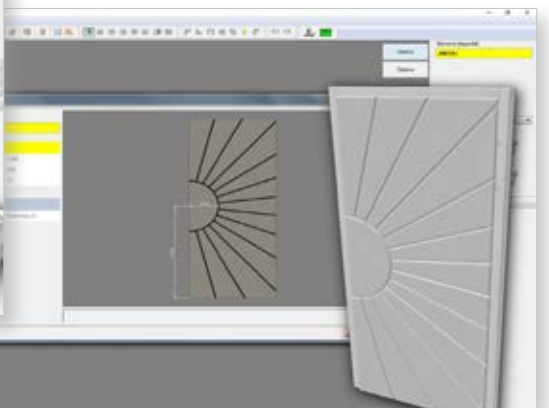
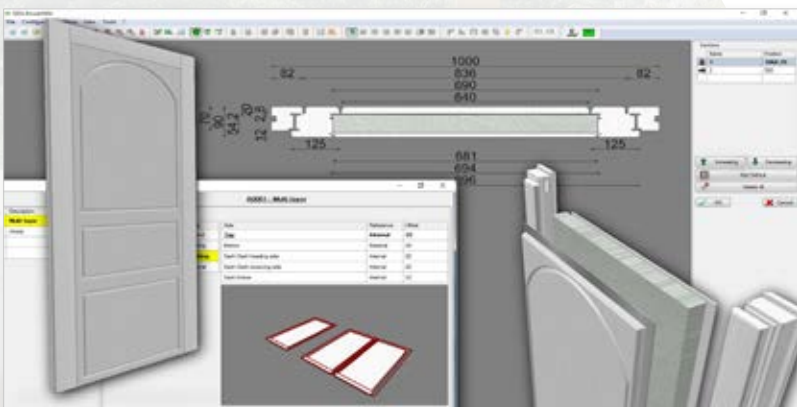
Maco LIBRA

The module to calculate Maco Libra subframes and external wooden box.

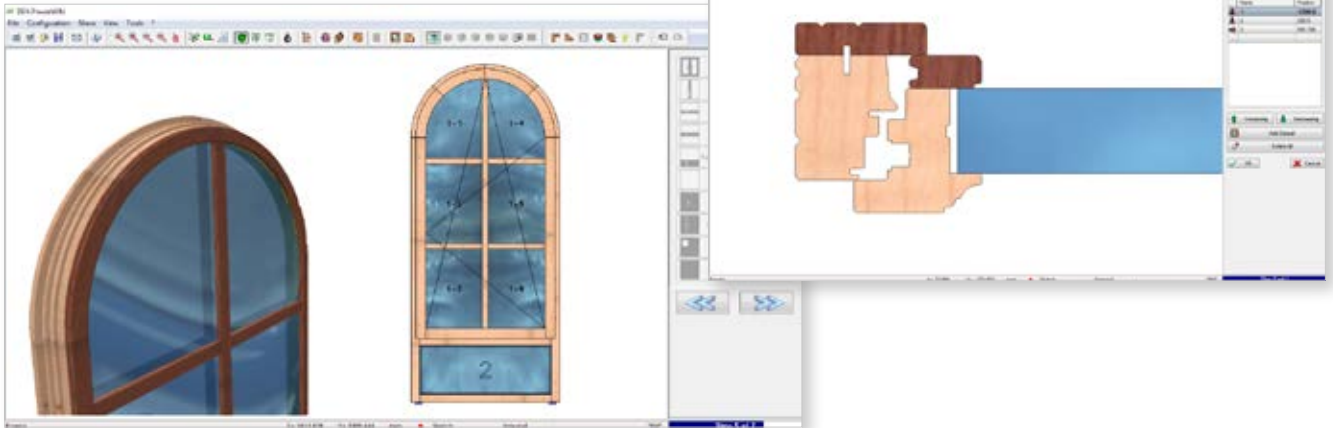


Engraved doors and panels

The module to design a library of parametric models of engraved doors and panels, to import CAD designed free shapes.



Wood - wood windows and doors

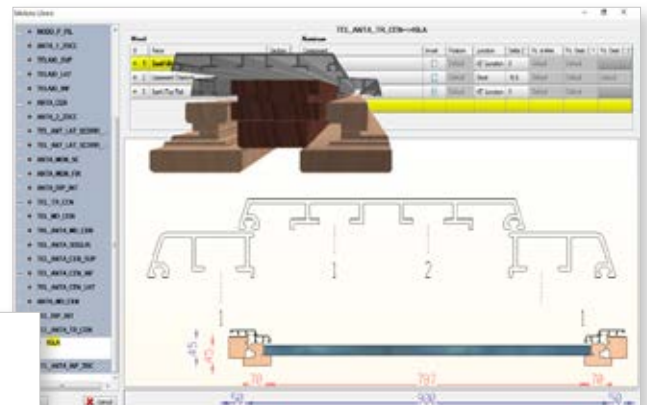


PowerWIN manages the assembling of two wooden pieces.

Wood - alu windows and doors

Aluminium cutting list

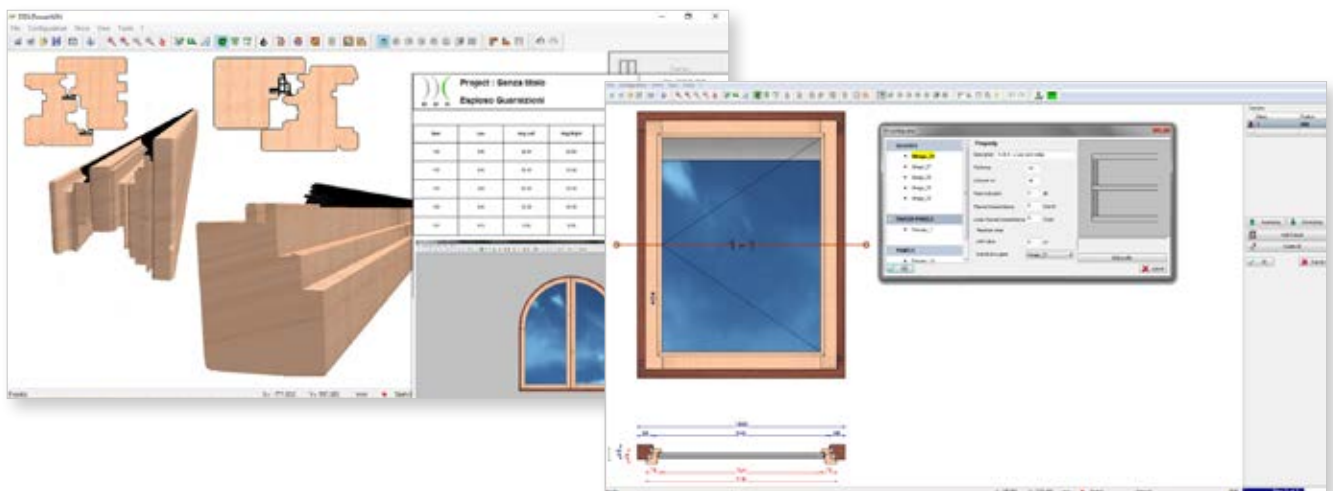
PowerWIN shows the aluminium item list with codes and the cutting list and generates automatically the machinings for clips.



The software produces the frame list and optimizes the aluminium bar cutting.

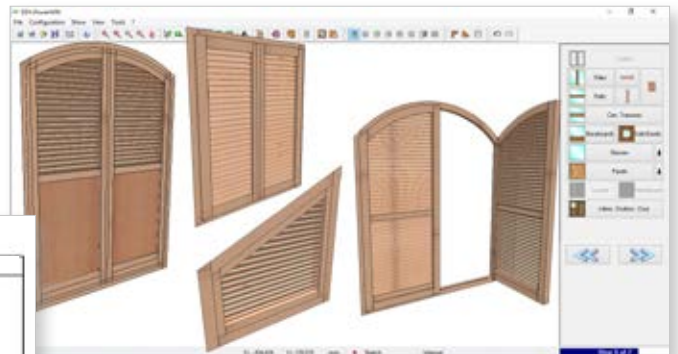
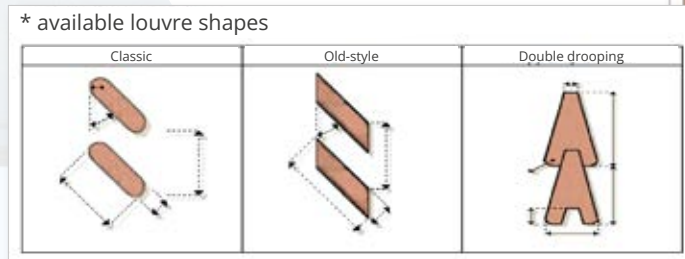


Gasket and glass lists



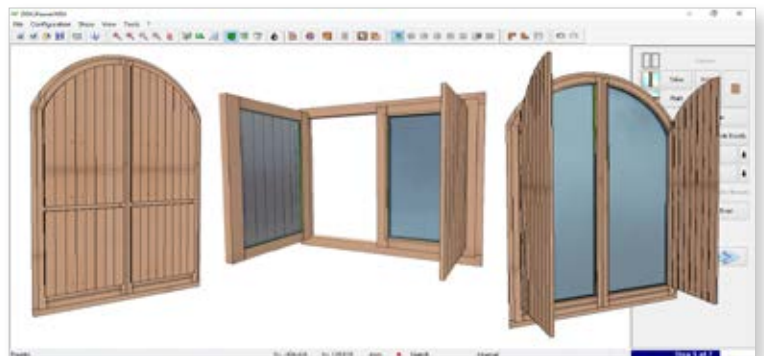
Jalousies

Jalousies can be designed with or without frame; the louvre boards can have same or different distance and several shapes*



Shutters

They can be internal or external and made up of panels or boards, with or without frame.



Customized window and batch printouts

Standard printouts:

- Rendering of the window/door with dimensions
- Assembling list
- Cutting list
- Glass and panel list
- Hardware list

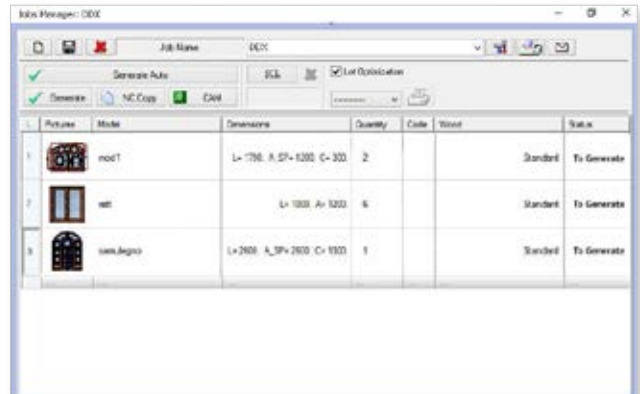
In case of windows and doors in batch you can print the cutting list of the batch and order the elements according to customized parameters.



Batch Production

PowerWIN imports the production list from external software in WDL, LOG and XML format.

You can add a batch of windows and doors and automatically generate the NC code for each project. Thanks to the machining optimization function, the project is machined according to the Customer's needs.

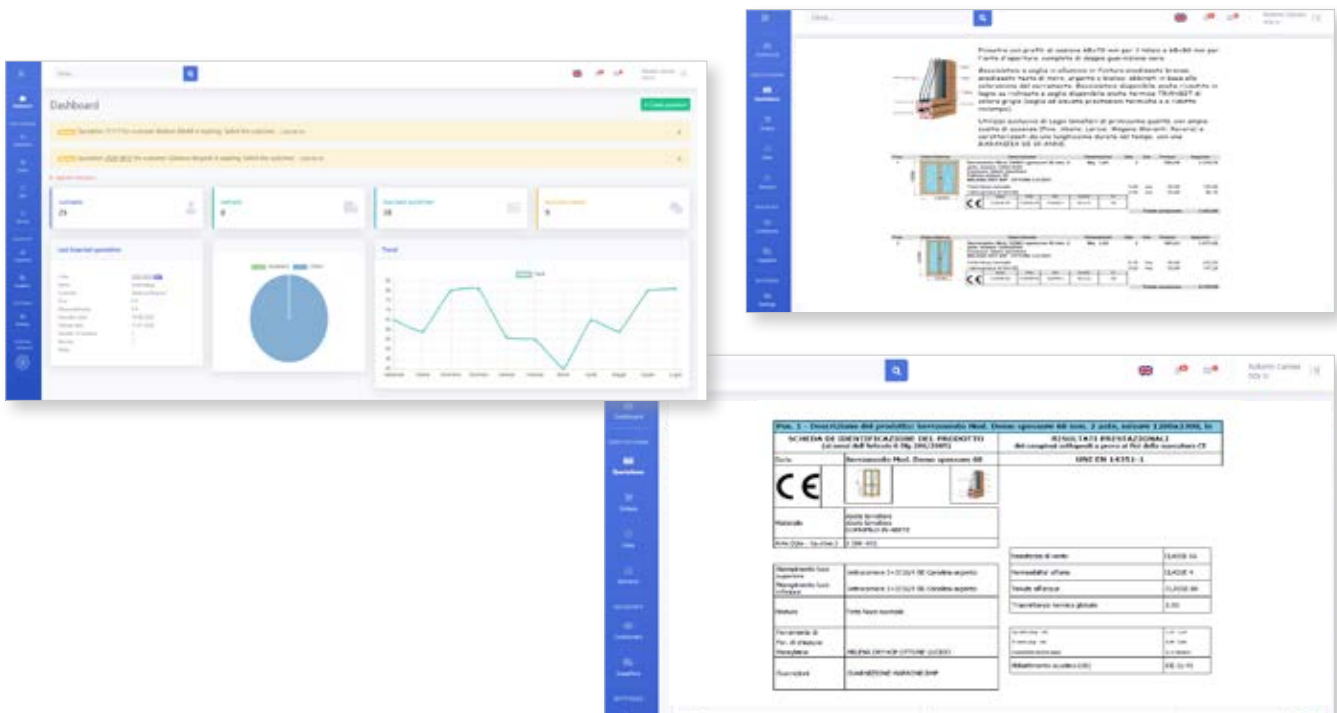


DXF Export

Export of the DXF file of any element of the window/door: stiles and rails, baseboards, glasses and panels and many others.

Business

The integrated ERP solution with customer database, quotations, orders, energetic certification and acoustic assessments, declaration of performance (DoP), delivery documents and invoices...

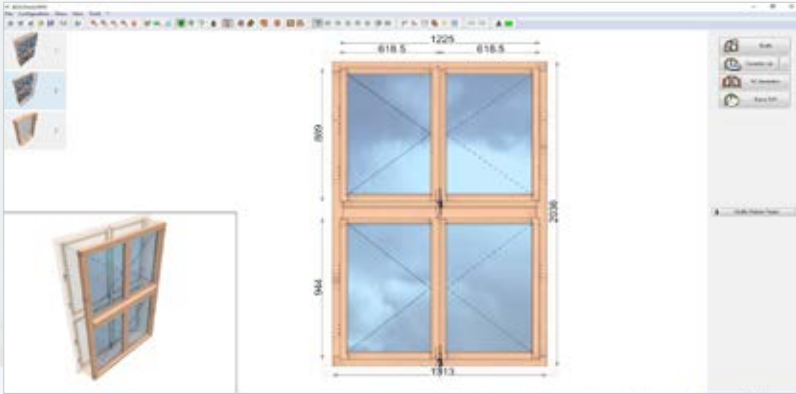


ERP connection

Integration of PowerWIN with the main ERP systems on the market.

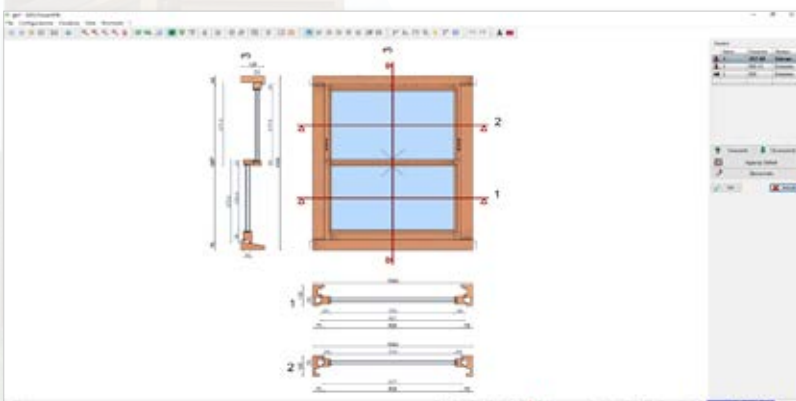
Double casement window "Kastenfenster" type

Design and production of double casement windows "Kastenfenster" type.



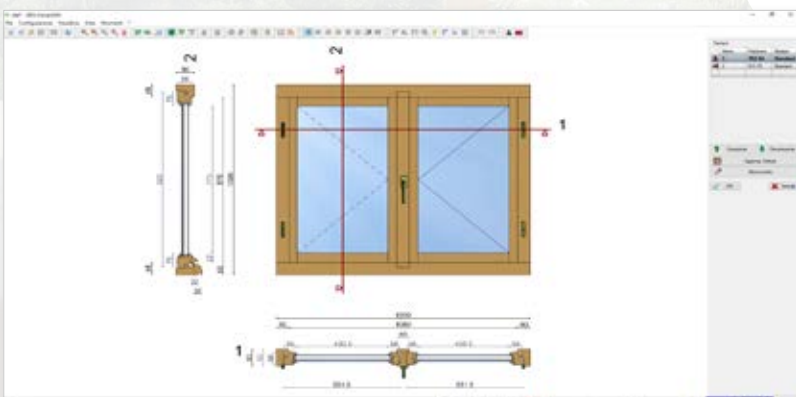
Guillotine windows

Design and production of guillotine window systems.



Traditional casement window with mullion "Gueule de Loup"

Design and production of casement windows of the "Gueule de Loup" type.



WinCAM

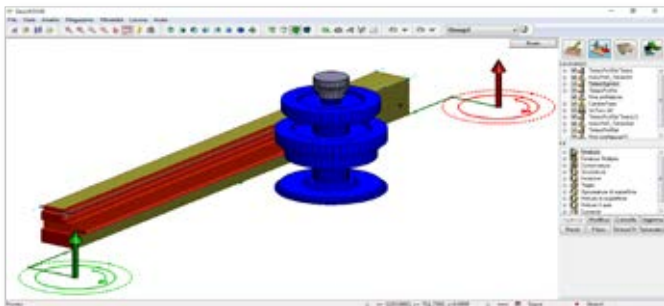
WinCAM manages all the machining for windows and doors manufacturing.

WinCAM for 3, 4 and 5 axes CNC machining centres

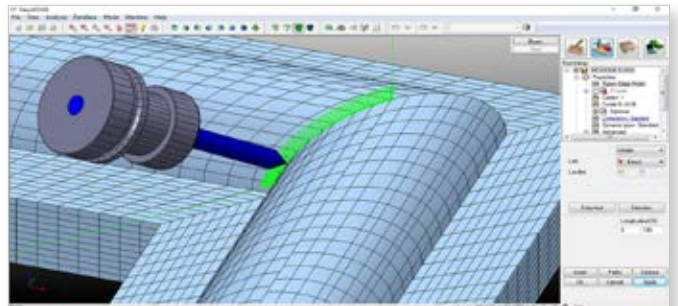
Generation of the NC code for 3, 4 and 5 axis CNC machining centres.

The graphic simulation with virtual milling of the machining allows you to detect any collision between tools (tool holder and tool shank included), table, references, vacuums and clamps during the machining.

EasyWOOD



WinCAM is always supplied with EasyWOOD Standard.



The upgrade to EasyWOOD Premium allows you to perform 5-axis machining with axis interpolation.

3D Simulation with 3D Collision Detection and Virtual Milling

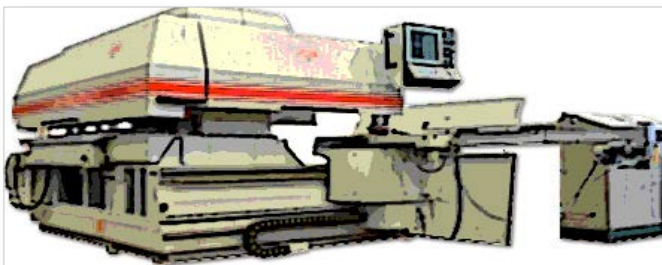
Simulation of the piece machining thanks to the exact 3D model of the Customer machine to detect any collision between all the elements, pieces included.



WinCAM Automatic table module

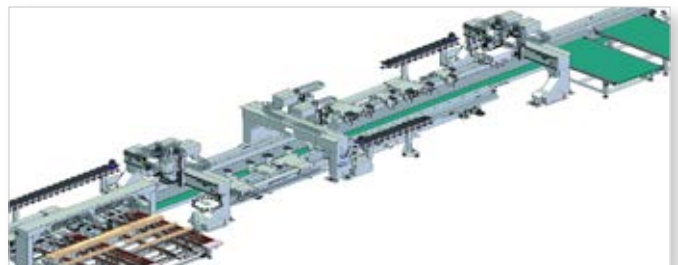
This module manages the automatic position of clamps and vacuums.

WinCAM for angular machines



This module generates the job list for traditional angular machines which cannot machine hardware and dowels.

WinCAM for production lines



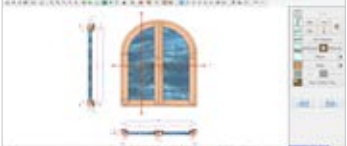


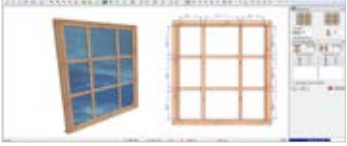





This module generates the job list for production lines including hardware, dowels and machine control through macros.

Function list

Features	Home	Door	Light	Standard
 <p>Design and machining of windows, French doors, solid wood internal doors and entry doors (Home Package can only design)</p>	✓		✓	✓
 <p>Parametric design and manufacture of main doors, 1 or 2 sashes (Home Package can only design)</p>	✓	✓	✓	✓
 <p>Design and machining of lift & slide windows 2, 3 and 4 sashes with thresholds (Home Package can only design)</p>	✓		○	✓
 <p>Design and machining of vertical and horizontal tilting rectangular windows (Home Package can only design)</p>	✓		○	✓
 <p>Design and Machining of lights and glazing bars: fanlights, side-lights, etc. (Home Package can only design)</p>	✓			✓
 <p>Design and machining of shutters (Home Package can only design)</p>	○		○	○
 <p>Design and machining of shutters (Home Package can only design)</p>	○		○	○
 <p>Design and machining of engraved doors and panels (Home Package can only design)</p>	○	✓		○

✓: included ○: optional


Features	Home	Door	Light	Standard
 <p>Design and machining of multiple windows/doors (Home Package can only design)</p>	○			○
 <p>Design and machining of complex windows/doors with profile change (Home Package can only design)</p>	○			○
 <p>3D Profiles and 3D Sections calculation (included in the module complex windows/doors with profile change)</p>	○			○
 <p>Internal, external and asymmetric opening: standard, tilting, coplanar, tilt and turn, etc.</p>	✓	✓	✓	✓
 <p>Baseboards, special rails and stiles shapes</p>	✓	✓	✓	✓
 <p>Multiple rails and stiles</p>	✓			✓
 <p>Internal and external side baseboards</p>	✓			✓
 <p>Glazing beads and architrave calculation</p>	✓	✓	✓	✓
 <p>Arc segments calculation: according to number, section, etc.</p>	✓	✓	✓	✓

✓: included ○: optional

Function list

Features	Home	Door	Light	Standard
 <p>Junctions: open and closed tenon, counterprofile, finger joint, mechanical assembly</p>	✓	✓	✓	✓
 <p>Aluminum threshold cutting list</p>	○	○	○	○
 <p>Hardware machining with item description, price and code</p>		✓	✓	✓
 <p>Accessory machining: drilling for painting, wall mount, water drain, ventilation, groves for clips, etc.</p>			✓	✓
 <p>Opening control for standard and special windows</p>	✓			✓
 <p>2D and 3D graphic and photo-realistic rendering</p>	✓	✓	✓	✓
 <p>Gasket list and printouts</p>	✓	✓	✓	✓
 <p>Window/door printout with dimensions</p>	✓	✓	✓	✓

✓: included ○: optional



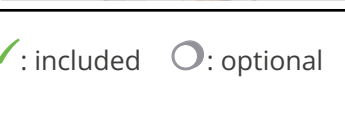
Features	Home	Door	Light	Standard	
	Cutting list of a single window/door	✓	✓	✓	✓
	Glass and panel list	✓	✓	✓	✓
	Hardware list	✓	✓	✓	✓
	Maco, AGB, Siegenia, Ferco and Roto pool file connection	○	○	○	○
	Maco LIBRA design	○	○	○	○
	Aluminum cutting list, frame list and aluminium bar optimization for wood-alu windows/doors	○	○	○	○
	DXF export of glasses, wooden elements and assembled	✓			✓
	BMP, JPG, TIFF and TAG export	✓			✓

✓: included ○: optional

Function list

Features	Home	Door	Light	Standard
 3, 4 and 5 axis machining control (5th axis for indexing only)		✓	✓	✓
 Chip deflector control		✓	✓	✓
 Automatic table control		○	○	✓
 Cross-cut saw control	○	○	○	○
 Molding machine control	○	○	○	○
 Frame press control	○	○	○	○
 Angular machine control	○	○	○	○
 Production line control	○	○	○	○
 5 axis aggregate control				○
 EasyWOOD STANDARD		✓	✓	✓

✓: included ○: optional

Features		Home	Door	Light	Standard
	Upgrade to EasyWOOD PREMIUM		<input type="radio"/>	<input type="radio"/>	<input type="radio"/>
	3D Simulator with collision detection and virtual milling		<input type="radio"/>	<input type="radio"/>	<input type="radio"/>
Shapes:					
	Rectangular	<input checked="" type="checkbox"/>	<input checked="" type="checkbox"/>	<input checked="" type="checkbox"/>	<input checked="" type="checkbox"/>
	Rectangular with arched sashes	<input checked="" type="checkbox"/>	<input checked="" type="checkbox"/>		<input checked="" type="checkbox"/>
	Rectangular "false arch"	<input checked="" type="checkbox"/>			<input checked="" type="checkbox"/>
	Horizontal and vertical rectangular tilting	<input checked="" type="checkbox"/>			<input checked="" type="checkbox"/>
	Rectangular lift and slide	<input checked="" type="checkbox"/>			<input checked="" type="checkbox"/>
	Trapezoidal	<input checked="" type="checkbox"/>	<input checked="" type="checkbox"/>	<input checked="" type="checkbox"/>	<input checked="" type="checkbox"/>
	Trapezoidal with arch	<input checked="" type="checkbox"/>			<input checked="" type="checkbox"/>
	Triangular	<input checked="" type="checkbox"/>		<input checked="" type="checkbox"/>	<input checked="" type="checkbox"/>
	Triangular with arch	<input checked="" type="checkbox"/>			<input checked="" type="checkbox"/>
	Segmental and round arch	<input checked="" type="checkbox"/>		<input checked="" type="checkbox"/>	<input checked="" type="checkbox"/>
	Gothic	<input checked="" type="checkbox"/>			<input checked="" type="checkbox"/>

: included : optional

Function list

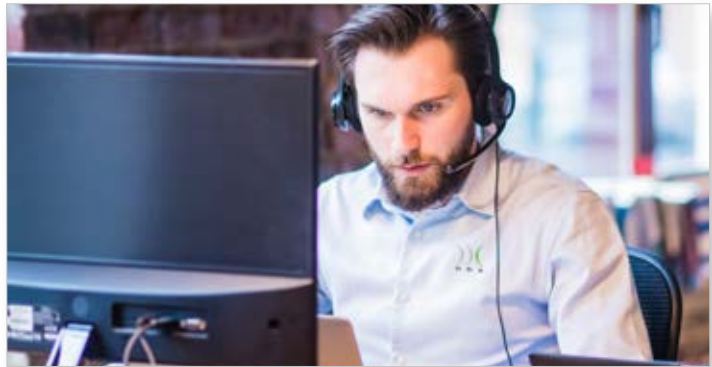
Shapes		Home	Door	Light	Standard
	Three centres made by arcs and ellipse	✓			✓
	Round tilting and normal porthole	✓			✓
	Oval tilting and normal porthole	✓			✓
	Elliptical tilting and normal porthole	✓			✓
	Point by point (or from a template)	✓			✓
	House-shaped	✓			✓
	Chamfered	✓			✓
	DXF and CAD project	✓			✓
	Double casement window "Kastenfenster"				○
	Guillotine window	✓			✓
	Traditional casement window with mullion "Gueule de Loup"				✓
	BATCH PRINTOUT printouts configuration: production list, raw parts list, glass list	✓	○		✓
	BATCH PRODUCTION - import of the production list from other software in WDL and LOG file format; - batch production according to customized rules: for single window, project, batch etc.; - BATCH PRINTOUT included	○	○		○
	BUSINESS MODULE: quotations, orders and bill of material, energetic certification and acoustic assessment	○		○	○

✓: included ○: optional

Service and Assistance

DDX customers can count on a competent and reliable partner. Our assistance service can be reached by phone and by remote support.

Software updates can be downloaded from our website www.ddxgroup.com.



Partner

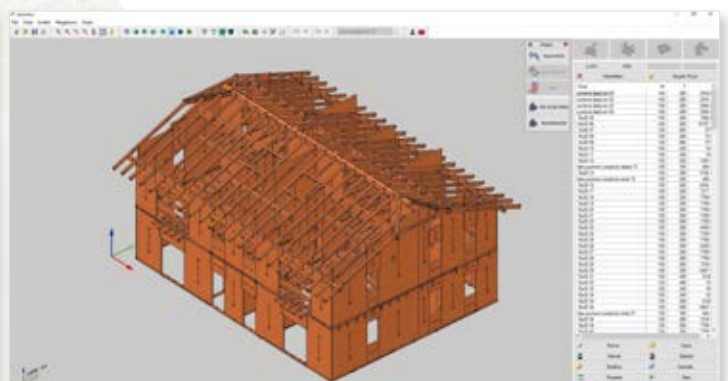
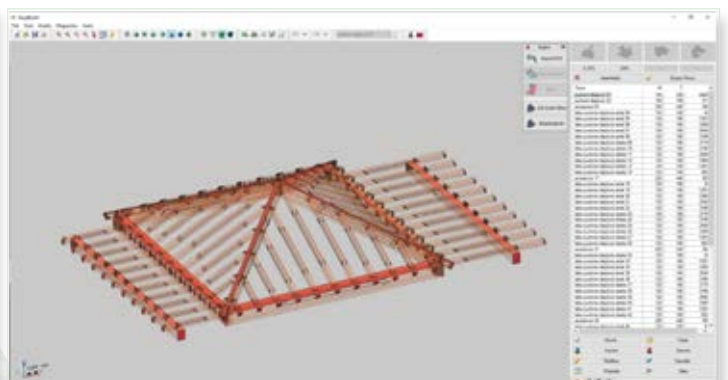
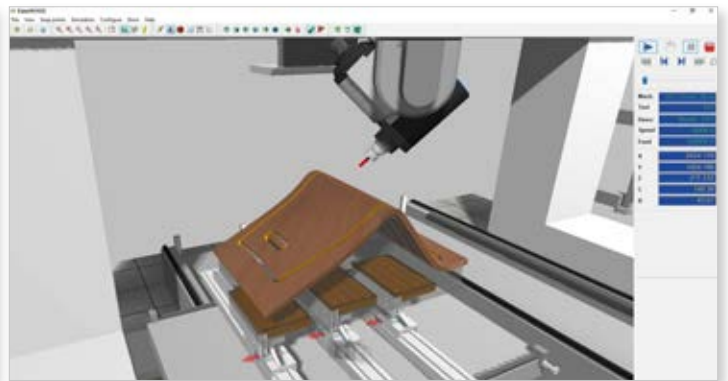
DDX is partner of the main CNC manufacturers:

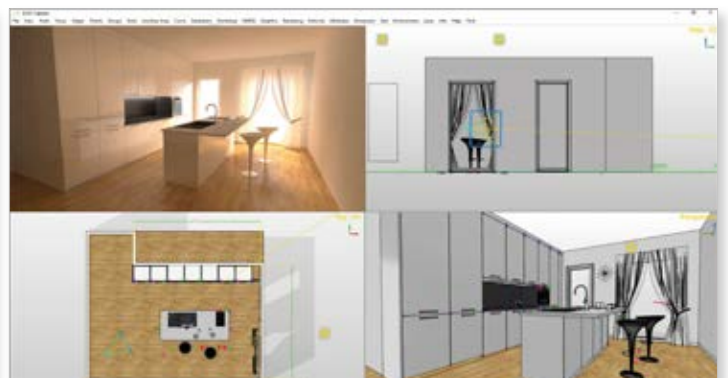


All trademarks or registered marks are the property of their respective owners, and are used for informational purposes only and the owner's benefit, without implying a violation of Copyright law.

Other DDX products

Wood field





←))) XFactory

Report Marina's garden

JOB	STARTING DAY	STARTING TIME	ENDING DAY	ENDING TIME	DURATION	STATE	LABEL
Sheet_11.67	14/09/2021	9:05	14/09/2021	9:13	8 min.	Sheet_11_167 Model Sheet: 6 (Completed printing)	Sheet_11.67 - Not printed
Sheet_11.68	14/09/2021	9:15	14/09/2021	9:25	10 min.	Sheet_11_168 Model Sheet: 10 (Completed printing)	Sheet_11.68 - Not printed
Sheet_11.70	14/09/2021	10:25	14/09/2021	10:37	12 min.	Sheet_11_170 Model Sheet: 10 (Completed printing)	Sheet_11.70 - Not printed



DDX Software Solutions

Via Donizetti, 109/111
24030 - Brembate di Sopra (BG)
Phone +39 035 621093
ITALY

DDX Deutschland

Oeynhausener Straße 48
32584 - Löhne
Phone +49 573 26871710
GERMANY

DDX Ibérica

Gaspar Bravo de Sobremonte
28341 - Valdemoro (Madrid)
Phone +34 918 955675
SPAIN

DDX France

1 place Saint Martin
79310 - La Boissière-en-Gâtine
Phone +33 (0)5 49955279
FRANCE

DDX Software Solutions | info@ddxgroup.com | www.ddxgroup.com