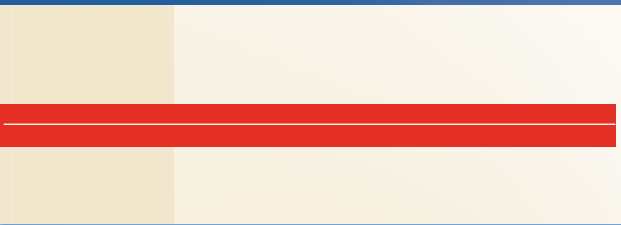
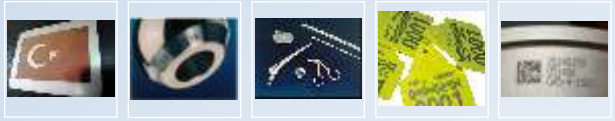




# Laser Marking Systems





**PULSED FIBER LASERS**

## SF Series Laser Marking Systems

SF Series Lasers is the latest generation of Q-Switched ytterbium Fiber Lasers specially designed for widest marking applications with average power levels from 20 W to 50 W. These lasers 2 parts which are head and controller. High power laser beam is delivered via fiber optic cable from controller to head. The head and controller designed to work without problem industrial circumstances which has dust and vibration. SF series lasers has air cooled robust design that provides small or modular for ease of integration production lines.

### STANDARD LENS CONFIGURATIONS FOCAL LENGTH MARKING FIELD

|            |                 |
|------------|-----------------|
| 163mm..... | 120 mm x 120 mm |
| 254mm..... | 200 mm x 200 mm |
| 350mm..... | 250 mm x 250 mm |
| 420mm..... | 300 mm x 300 mm |

### LASER MARKER SPECIFICATIONS

|                                     |   |
|-------------------------------------|---|
| Compliance.....                     | CDRH, CE, CSA, UL                                     |
| Wavelength .....                    | 1,060nm   |
| Laser Type .....                    | Q-Switched Ytterbium Fiber Laser                      |
| Average Power SF50/30/20 .....      | 50/30/20 W  |
| Peak Power SF50/30/20 .....         | >8kW  |
| Beam Quality SF50/30/20 .....       | M 2 < 2   |
| Fiber Length SF50/30/20 .....       | 2 meters  |
| Long Term Power Drift.....          | < +/- 5%  |
| Optical Isolator.....               | Standard  |
| Positioning.....                    | Visible Red Diode Light                               |
| Mounting Weight.....                | 8kg   |
| Marking Head Dimensions.....        | 51.0 (L) x 13.8 (W) x 11.5 cm (H)                     |
| SF Controller Dimensions.....       | 46 (W) x 15 (H) x 50 cm(D)                            |
| SF Controller Weight.....           | 28 kg   |
| Laser Marking Head Cable.....       | 2m  |
| Input Power (Selectable).....       | 100-240V AC, 50 Hz                                    |
| Maximum Power Consumption FQ50..... | Less than 400W  |
| Maximum Power Consumption FQ30..... | Less than 280W  |
| Maximum Power Consumption FQ20..... | Less than 250W  |
| Cooling.....                        | Air Cooled, Fan/Filter<br>(no water cooling required) |
| Operating Temperature Range .....   | 15° to 35°C   |
| Humidity.....                       | 10% to 85% Non-condensing                             |



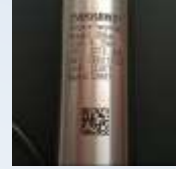
## APPLICATIONS



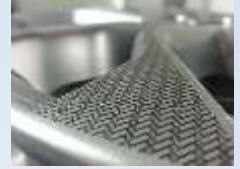
Traceability of automotive parts



Plastic parts marking



Steel parts marking



Aluminum wheel marking



Mould parts marking



Rubber mold marking



Bronze parts marking



Medical parts marking



Colourful marking on stainless steel



Carbide insert marking



Engraved marking



Deep marking on aluminum and bronze

## OPTIONS



Rotary device for cylindrical parts



Barcode reader for marking



Programmable Z axis and Focus Finder



Custom colours for enclosures



Mark on the fly on production line



Servo Rotary Table



Robotic load/unload systems





## HEAD QUARTERS

Tavukcuyolu Cad. Eser Sok. No: 12/B Kat: 3  
Umraniye - Istanbul - TURKEY  
Tel. 0.216.420 95 38 • Faks 0.216.313 72 48

Selcuklu Is Merkezi Tuna Mh. Sanat Cd.  
No: 17/111 Bornova - Izmir - TURKEY  
Tel. 0.232.433 55 75 • Faks 0.232.433 55 76

## EUROPE CENTER

---

[www.sfamakina.com](http://www.sfamakina.com) • [bilgi@sfamakina.com](mailto:bilgi@sfamakina.com)