

EFOIL 1050

Specifications

Stock Range	
1. Paper Minimum	80 g/m ²
2. Board Maximum	600 g/m ²
Max. Sheet Size	1050 × 750 mm
Min. Sheet Size	400 × 360 mm
Max. Cutting Size	1040 × 720 mm
Inner Chase Size	1080 × 745 mm
Cutting Plate Size	1080 × 736 mm
Gripper Margin	8-16 mm
Cutting Rule Height	23.8 mm
Max. Mechanical Speed	7500 cycles/hour
Max. Cutting Pressure	300 tons
Total Power Required	74 KW
Electrical Power	220V, 50/60HZ, 3-phase
Net Weight of Machine	16 tons
Machine Dimensions	5573 (L) × 4830 (W) × 2809 (H) mm

Specifications of Longitudinal Foil Stamping System

Foil Width	1020 mm Max. - 25 mm Min.
Max. Stamping Area	1020 × 730 mm
Max. Foil Reel Diameter	Ø 240 mm
Max. Foil Pull Length	730 mm

Other Specifications of Hot Foil Stamping Unit

Temperature Range	0-160 °C
Number of Heated Zones	12
Power for Heating	24 KW

Specifications of Cross Foil Stamping System

Foil Width	600 mm Max. - 25 mm Min.
Max. Stamping Area	1020 × 600 mm
Max. Foil Reel Diameter	Ø 200 mm
Max. Foil Pull Length	1020 mm

In the interests of product improvement, the manufacturer reserves the rights to change specifications and features without notice.

EFOIL 1050

Finally, as usual we retain humble Brasseur price and efficient service to achieve a superior price/performance ratio, which in current difficult economical environment is more crucial than ever. EFOIL 1050 is definitely a great achievement of our goal: **The Best Option!**



ETERNA
A Bobst Group company

Shanghai Eternal Machinery Co., Ltd.

Shanghai Plant:

No. 1125 Taishun Road, Anting Town, Jiading District, Shanghai, 201814 China
Tel: + 86-21-59502451 59502481~2487 Fax: + 86-21-59502477
E-mail: sales@eterna-group.com

EXP. / IMP. Department:

T1/13AB, Gateway Plaza, No. 2601 Xietu Road, Shanghai, 200030, China
Tel: + 86-21-64262538 Fax: + 86-21-64262153
E-mail: export@eterna-group.com
Website: www.eterna-group.com

Agent :

ETERNA
A Bobst Group company

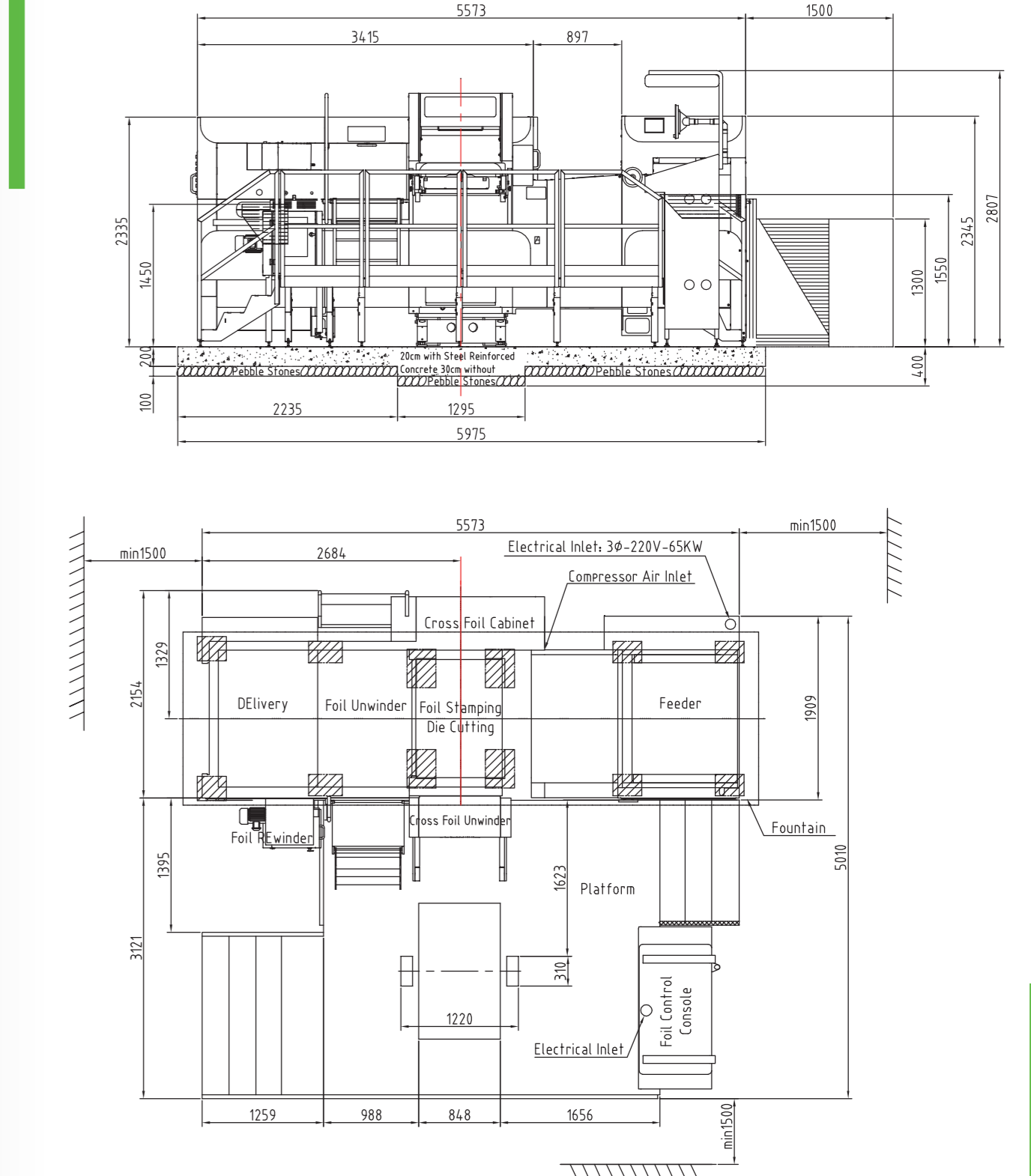
AUTOMATIC DIECUTTING AND FOIL STAMPING MACHINE

EFOIL 1050



SHANGHAI ETERNAL MACHINERY CO., LTD.

EFOIL 1050 FLOOR PLAN

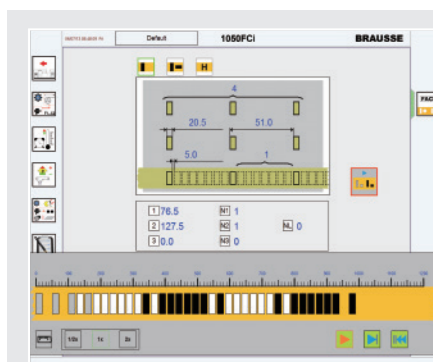


unit : mm

EFOIL 1050

AUTOMATIC DIECUTTING AND FOIL STAMPING MACHINE

ETERNA
A Bobst Group company



FOIL ADVANCING CONTROL

AFCS has numerous high end features such as foil advancing pull combination calculation, automatic most efficient pull combination calculation as well as on-the-fly simulation. Hologram stamping is based on Group's latest technology and provides reliable and precise hologram foil advancing control.



FAST FOIL STAMPING STARTING SPEED

Faster impression on restart without gripper bar stopping to increase productivity and reduce waste foil and waste paper (subject to actual pressure and set speed).



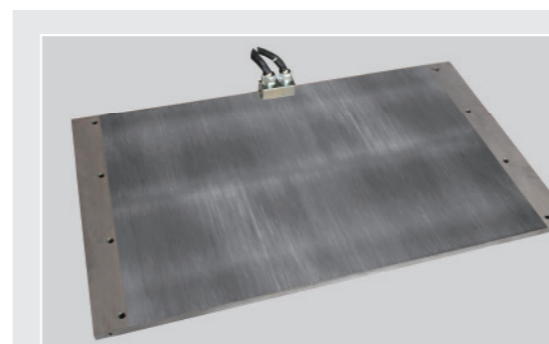
FOIL PRESSING ROLLER

Tension rollers and foil advancing rollers are each driven by 3.5KW servomotor and controlled by AFCS. Group standard pressing rollers on tension rollers with easy pressure adjustment hence quick set up, more stable foil advancing in wide or narrow widths.



WASTE FOIL EJECTION BRUSH

Two pairs of waste foil ejection brushes driven by 2KW servomotor, controlled by AFCS for efficient waste foil ejection and keeping foil tension constant by synchronizing the pressure between waste foil pulling with foil advancing.



HEATING BASE

Based on Group matured technology platform, the heating base was designed with precise and fast temperature tracking capabilities, for high speed production and large area foil coverage. The Advanced Foil Control System (AFCS) performs rapid heat compensation in addition to precise foil control, to ensure high productivity as well as top quality products.



MICRO ADJUSTMENT IN BOTH RUNNING AND CROSS DIRECTIONS

5mm hardened stamping plate or 3.5mm + 1.5mm sandwich plate on top of 15 mm precision ground support base plate with +/- 0.9 mm micro adjustment in both running and cross directions for quick set up and easy make ready.

To Obtain Extra Production With



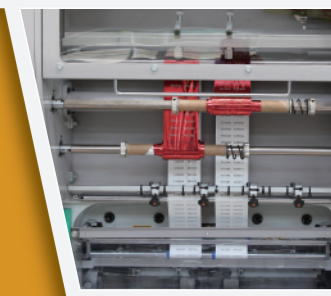
SIDE CHASE LOADER

Free standing for loading cutting chase. To set up next job off-line on the Side Chase Loader while machine is running, save down time and increase productivity.



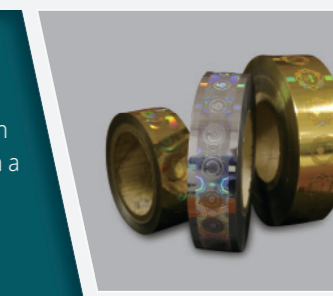
CROSS FOIL STAMPING SYSTEM

Two servomotors (3.5KW) driven cross foil shafts each individually programmable for short and long foil pulls.



HOLOGRAM STAMPING SYSTEM

Two servomotors (3.5KW) driven longitudinal foil advancing shafts and each individually equipped with a holographic foil mark reading photo sensor.



STAND-ALONE REWINDER WITH 6 TENSION ROLLER

Free standing waste foil rewriter with 6 torque motor driven shafts and 6 dancing rollers for persistent tension control.



WASTE FOIL 3-SHAFT REWINDER

Three shafts waste foil rewinding unit below the waste foil ejection brush, AC motor driven with inverter to control the speed and tension.



FOIL PRE-SETTING TABLE

Off-line pre-setting table for foils while machine is running, thus save changeover time.

