

数控 CNC 加工中心

Numerically Controlled Working Center



技术特点 Technical Feature

设备框架: Monoblock Design

整机是由一组高强度钢焊接而成的结构。该结构具有稳定的支撑结构底座。经退火，所有加工面被加工成型为一个整体。

The whole machine is a structure welded by a group of high-strength steel. Double layer structure guarantee the long terms stability.



设备横梁: Machine Bridge

高强度龙门梁是设备重要的机械部件;通过多次内应力消除处理，确保整个梁稳定工作;

High-strength gantry beam is important mechanical part of the machine; Through multiple internal stress relief treatments, that ensured the beam working stably and accurate.



全铝工作台面: Aluminium Work Bench

工作台面采用整块铝制材料，铝板经过精磨加工，保证台面吸盘吸附力的稳定和加工精度;

The working table is made one piece aluminum material, and the aluminum plate is finely ground to ensure the stability of the adsorption force and processing accuracy of the suction cup on the table.



主轴冷却: Spindle Cooler

独立外部工业冷却系统，通过热交换器达到加工主轴恒定温度，使其更有效工作，并延长加工主轴的使用寿命。

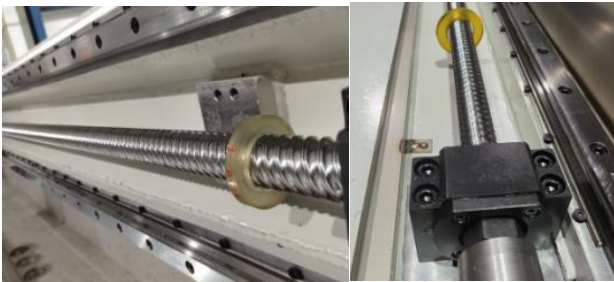
Independent external industrial cooling system, through the heat exchanger to achieve a constant temperature of the machining spindle, that works efficiently and prolongs the service life of the spindle.



各轴联动: Axis Movement

龙门设计由 X 轴、Y1 轴、Y2 轴和 Z 轴 4 轴控制组成;龙门桥由两个伺服电机 Y 和 Y1 驱动,并配有二个滚珠丝杠和直线导轨;

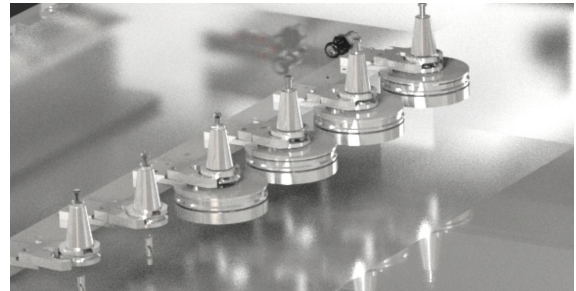
The gantry design is composed of 4 axes: X-axis, Y1-axis, Y2-axis and Z-axis. The gantry bridge is driven by two servo motors Y and Y1 synchronization, and all axis equipped with ball screw and linear guides.



设备刀具 (选项): Tool Magazine (Options)

配备自动换刀装置,带 6 个工位刀具库。

Automatic Tool Changer with 6 position tool racks.



自动润滑: Automatic Lubrication System

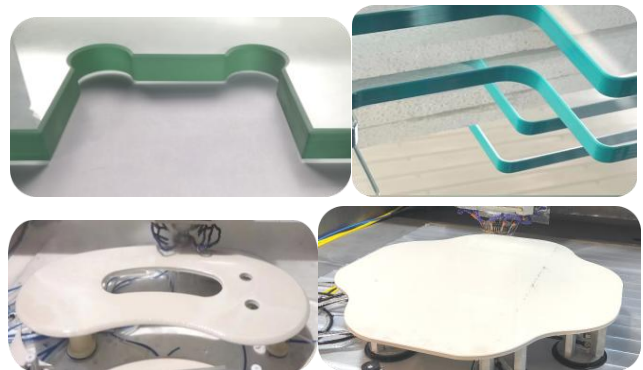
整机配备自动润滑系统,有效保证丝杠导轨和滑块的润滑;

Machine is equipped with an automatic lubrication system to effectively ensure all the movement parts been well lubricated all the time.



机器可加工: Machine Machinability

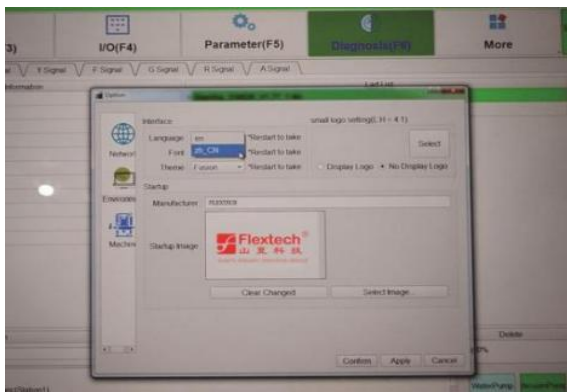
玻璃/石材的粗磨、精磨、抛光,铣,钻等工艺
 Rough grinding, Polishing, Milling, Drilling ect.



操作界面: Windows Operation Interface

Windows 视窗操作界面，系统包括中英文语言，配备中英文说明书。用户可以掌握设备的完整性能。

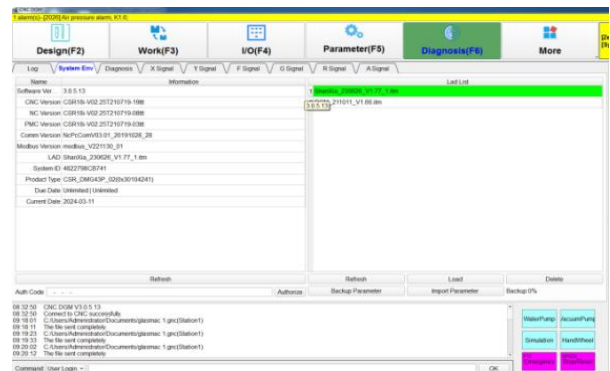
Windows operation interface, and the system contains Chinese and English languages and the operator can access the machine in short time.



自动诊断: Automatic Diagnosis

所有电子零件，如各轴马达、编码器、驱动卡等发生故障时，软件将立刻提示其状态，协助操作人员迅速判读并快速排除故障。

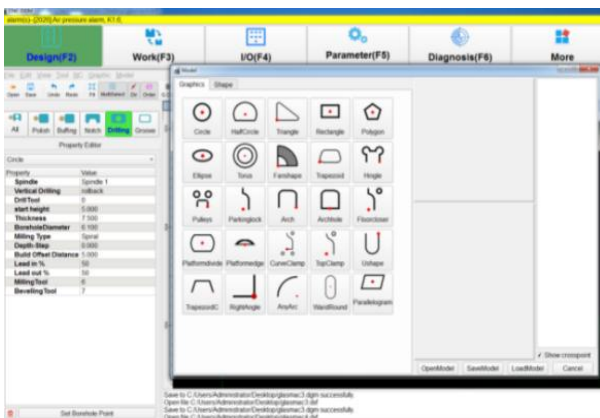
In case of fault, The software indicate the error message on the display, that help operator to make troubleshooting quickly.



异形图库: Shape library

图库中包含了常用的几何式异形，满足常用可能性的需要。该图库可进行调用，修改，另存并进行加工。

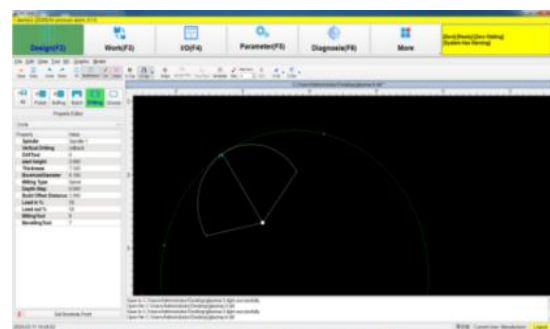
The gallery contains most geometric profiles for common possibilities. It can be recalled, modified, and saved for process next step.



绘图界面: Drawing Interface

标准的 CAD 图形 (可通过 AutoCAD 制作，也可以是来自其他公司的 DXF 图形文件)，直接转存为 dxf 格式文件，配上要加工的磨轮刀具即可。

Standard CAD drawings which can be created by AutoCAD or DXF drawings, direct converted to dxf format and CNC will combine tool setup necessary for slab processing.



型号规格 Technical Specification

型号 Model	SEW-3015
加工最大尺寸 Max glass size	3000*1500mm
玻璃厚度 Glass Thickness	3-19mm
设备重量 Machine Weight	4900Kg
外形尺寸 Machine Dimension	5300*3300*1900mm
装机功率 Install Power	25KW
电压 Power Supply	380V(+/-10%)/50HZ/
压缩空气 Compressed Air	6 Bar-Max 7Bar
环境 (温度/湿度) Environment (Temperature/Humidity)	+5°C to +45°C, Maximum 80% non Condensing
加工精度 Machining Accuracy	±0.15mm
各轴速度 Axis Speed	30m/min
主轴功率 Spindle Power	15KW
刀柄规格 Cones Type	Cones Tool Holder (BT40)
主轴转速 Spindle Speed	12000 RPM (Maximum 最大)
主轴冷却模式 Spindle Cooling	Oil Cooling 油冷
6 工位刀库 6 Pos Tool Magazine	Included 包含

Item	物料名称	Description	品牌	Trademark
1	伺服电机	Servo Motor	台达	DELTA
2	伺服驱动器	Servo Driver	台达	DELTA
3	变频器	Inverter	尼德科	NIDEC
4	直线导轨	Linear guide	上银/CSK	HIWIN/CSK
5	丝杆	Ball screw	上银/TBI	HIWIN/TBI
6	加工主轴	Spindle	山夏	FLEXTECH
7	交流接触器	AC contactor	西门子	SIEMENS
8	中间继电器	Relay	欧姆龙	OMRON
9	工控机	Industry PC	研为	YANWEI
10	开关电源	DC Power	明纬	MINGWEI
11	工业冷水机组	Industrial chiller	瑞科	RUCOL
12	限位开关	Limit Switch	奥托尼克斯	AUTONICS
13	保险丝和保险丝座	Fuse & Fuse Holder	凯昆	KACON
14	气缸	Air Cylinder	亚德客	AIRTAC
15	气源处理件	Filter-Reduction Unit	亚德客	AIRTAC
16	控制系统	Control system	PC+NC 山夏	PC+NC Flextech

Item	物料说明 Parts Description	数量 QTY
1	吸盘直径 SUCTION CUP DIAMETER 160mm	8
2	吸盘直径 SUCTION CUP DIAMETER 120mm	6
3	定位气缸 Position Air cylinder	6
4	吸盘胶 Suction Glue 直径 diameter 160mm	6
5	吸盘胶 Suction Glue 直径 diameter 120mm	6
6	定位器尼龙块 Nylon back stop	3
7	随机工具及工具箱 Tool box andt Tools	1
8	说明书及电路图 Specifications and circuit diagrams	1
9	直边金刚轮 Diamond wheels, Flat edge,8mm, 120mesh/ 240mesh ,each one set ;	1
10	抛光轮 polishing wheels, T= 25mm, 4sets	
11	磨轮刀柄 WHEELS CONES 4 pcs 螺纹刀柄 CONE FOR MILLING/ DRILLING 1 pcs 夹头刀柄 CHUCKS CONES 1 pcs	1
12	辅助上片定位气缸结构 Loading cylinder structure for positioning slabs	4
13	8MM 厚度铣刀, 直径 16MM, 150 目 8mm thickness router, diameter 16mm with 150mesh;	1
14	Drilling bits 钻咀 直径 20mm	1
15	8 厘厚圆边, 12mm 直径, 150 目 Pencil edge, 12mm diameter with 8mm thickness 150 mesh	2
16	台面铣刀 Working bench milling tool	1

