

Folga 富高

i @

+e

ff

c

*k

+

+

Folga 富高

Folga 富高

Folga 富高

20 Years Development

● 成立在佛山順德，同年生產玻璃直線磨邊機、玻璃斜線磨邊機、玻璃異形磨邊機、玻璃鑽孔機、玻璃清洗機
Established in Shunde, mainly manufacture glass single edging machine, glass beveling machine, glass irregular shaping machine, glass drilling machine and glass washing machine.

● 新工厂投入使用
New factory built in Shunde Foshan

● 富高主營項目全面升級，主營項目：
玻璃全自動雙邊磨生產線
The main projects has been comprehensively upgraded: Fully automatic double edger production line

● 第三代高速智能雙邊磨生產線
The Third Generation High Speed Intelligent Double Edger Line

● 公司加大注資擴大規模品牌優化升級
Products Upgraded Better For Fully Intelligent Factory

● 富高成立20周年
FOLGA 20 Years

2004

2008

2010

2014

2020

2024

2006

2009

2013

2017

2022

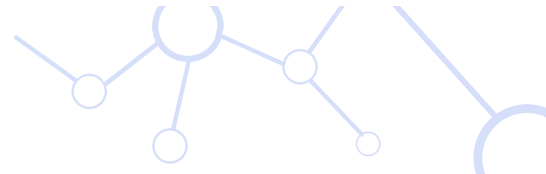
● 研發生產玻璃雙邊磨邊機
Research & develop glass double edger

● 出口機器超過40個國家與地區
Export to more than 40 countries & states

● 研發生產全自動玻璃四邊磨
Research & develop glass seaming machine

● 60+ 項發明專利和實用專利
60+ Invention Patents & Utility Patents

● 為客戶打造整廠智能化工廠
Fully Automatic Double Edger Line For JUMBO Glass

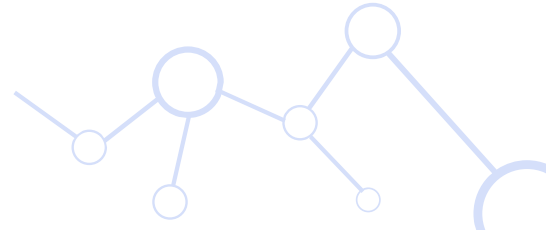


Who We Are

Guangdong Folga Intelligent Technology Co.,Ltd, established in 2004, is a high-tech enterprise for glass machines that integrated R&D, manufacturing, sales, installation, commissioning and after-sales. And the headquarter is in Shunde, occupied area around 12,000 square meter to make sure stable technology, quality and production capacity.

20 years, We Folga have been insisting on the spririt of 'DO ONE WELL, TO BE CONSISTENT' together with continuous innovation ability to offer the most optimum glass machines for our customers from all over the world.

Main products: high speed automatic double edger & high speed automatic four-side edger.

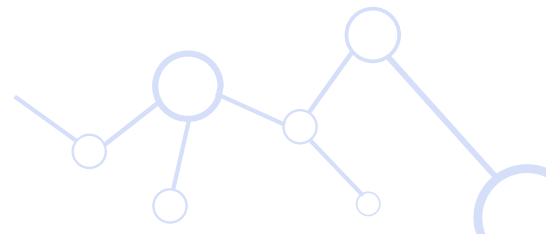


e

ff

+

Q, ,l ,h ,, ,o ,z ,w F
z , ,l ,z ,k ,, ,t ,z ,z ,x -, ,
,



h +i @ +e +f +
s +n +g +g +s

FSM series automatic high speed double edger line has features of economy, high-efficiency, High-accuracy, reliability and safety, suitable for a variety of mixed or same size building glass, furniture glass or window & door glass.

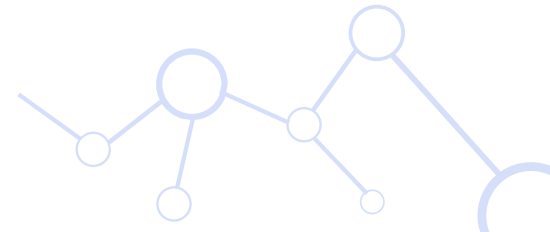




g +N +g +
v +A +C +S

Main structure of double edge processed by annealing and aging treatment, then five sides are processed by CNC processing center at one time for high accuracy. The linear accuracy is within 0.02MM, perpendicular and parallel accuracy within 0.03MM.

CNC processing can improve main parts accuracy
Greatly improve machine stability





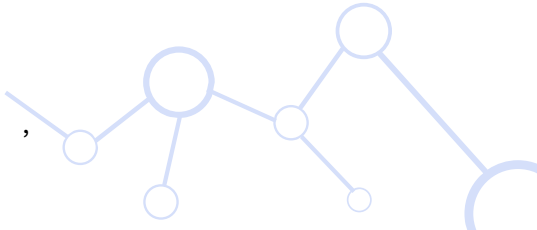
h +u +1
 v +C

1. Processed by CNC to make sure excellent smoothness, perpendicularity and parallelism, the linear accuracy is within 0.02MM, perpendicular and parallel accuracy within 0.03MM.

2. 3 pcs sliding block (EXCLUSIVE design of Folga) as supporting points to make sure flexible side can be locked tightly when process JUMBO glass for better grinding & polishing quality.

3. , ,

GHz , ,



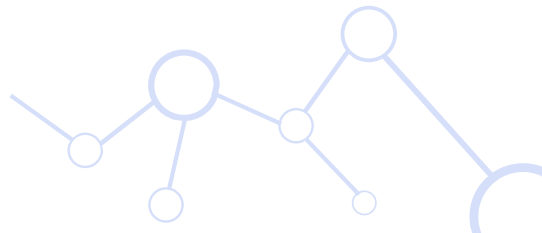


HCo 0 1C 1V 1U 1+

1 1n 1h

Ball screw rod structure adopts Germany Fulex GmbH 5050 large pitch screw, Germany Fulex GmbH 45 linear guide, additional 1.5KW brake servo, the size changing speed up to 15M/Min. Accurate repositioning, when processing big size glass, capable of efficiently locking the flexible side body to make sure it won't slide away.

Width adjusting **stability**



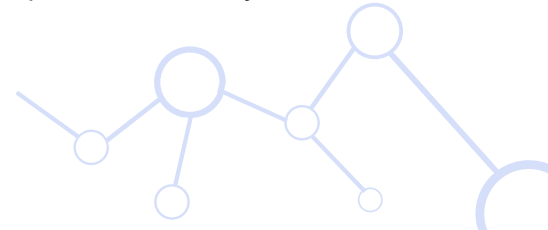


g +

C +g +o

1.The base for motor adopts cross ball guide rail + manual & automatic integration if servo motor for compensation, high accuracy. If servo motor fail to work , it is available to adjust by manual handle to make sure machine can continuously work normally.

2. The UNIQUE structure of servo automatic compensation for polishing in the glass edging machine field to make sure same operation way between fully servo compensation and fully manual adjustment.

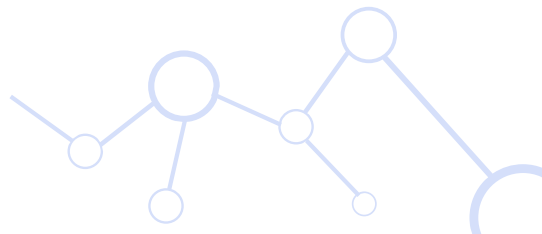
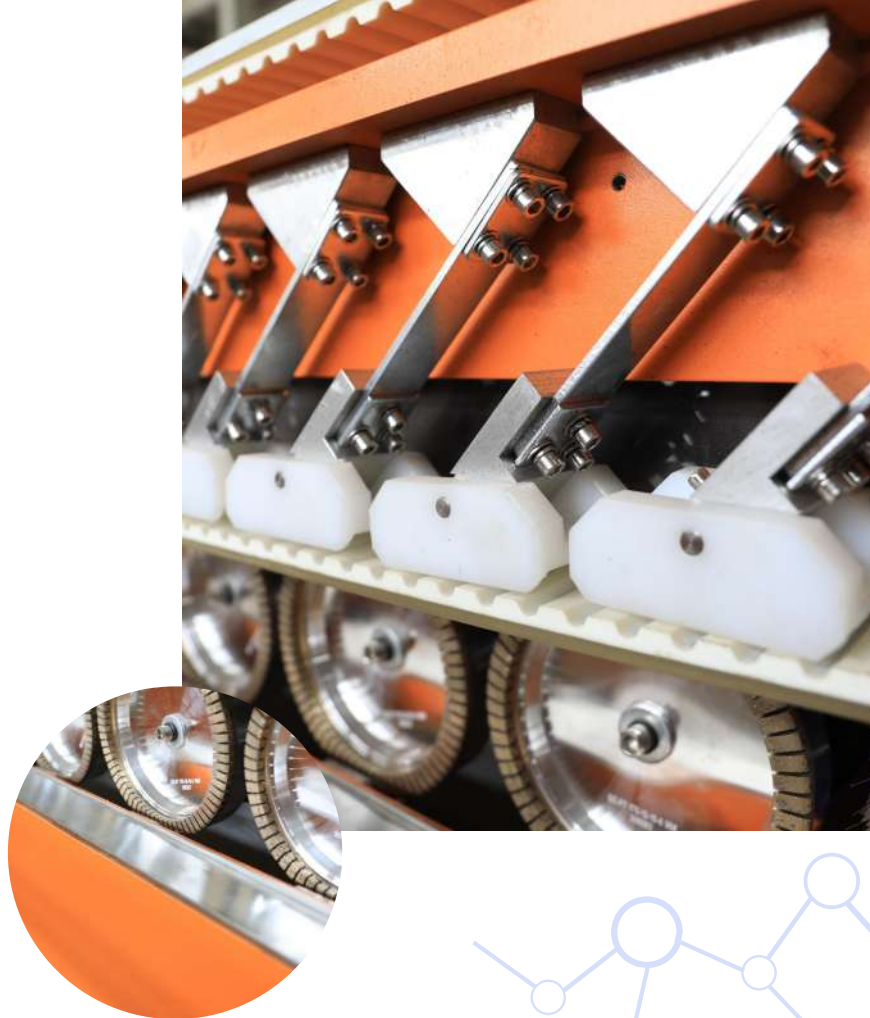


e + id +
g + tv

Automatic lifting device of clamping frame adopts spring steel plate structure that much stronger toughness, famous brand timing belt that is much more durable, available to rise and fall 150MM for replacing wheels easily.

V + + +

This durable structure has much stronger toughness for better protecting timing belt from damaging.



Standard



Option



O

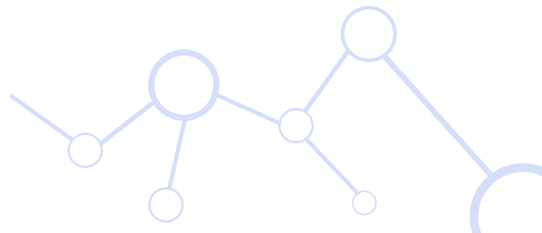
te

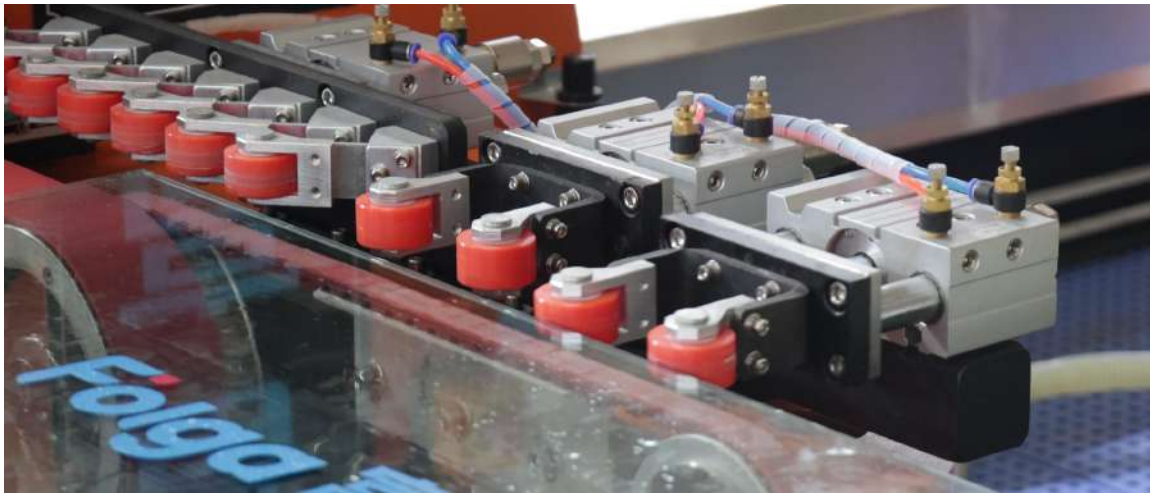
+v

1.Main drive structure adopts 1:1 spur gear+double servo for sync driving+gear reducer BKM110 which is much more durable and highly efficient compared to worm speed reducer.

2.Spur gear has stronger torsion and not easy to breakage when high speed compared to umbrella gear.

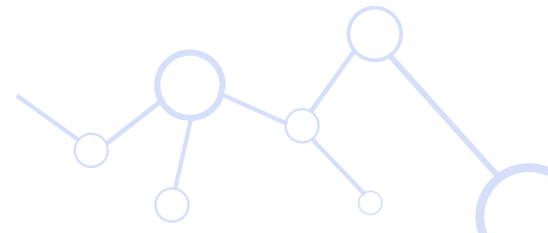
v ak ,z , , , ,s G ,
s ,





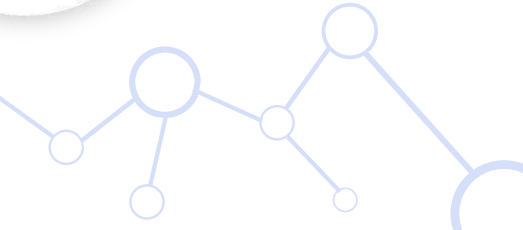
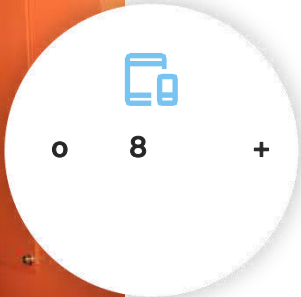
S **te** **g** **tv** **tw**

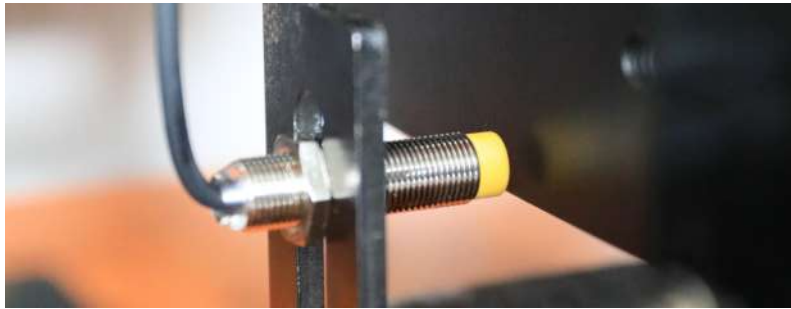
Red wheels from flexible side consists of 3 three shafts cylinder, the first two for pre-push (push times can be set freely) when glass reach the third cylinder, three cylinders will drive red wheel to touch glass simultaneously to make sure big & thick glass can pull over to touch wheels for better grinding & polishing effect and tiny diagonal error.



g #
n @ +g +
u te

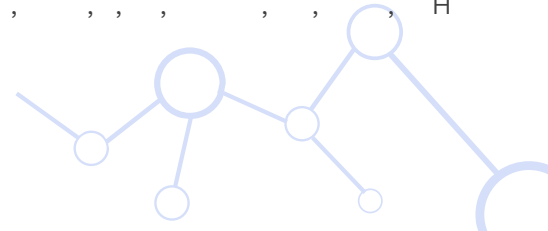
z , , , F ,sv G , ,
, , , , , , , , ,
, ,





b +
x +d +g
x +d +c
g +

, , ,j ,m F ,j ,i , ,m ,
 , , , , , , , F
 , , , , , , , ,
 , , , , , , , H

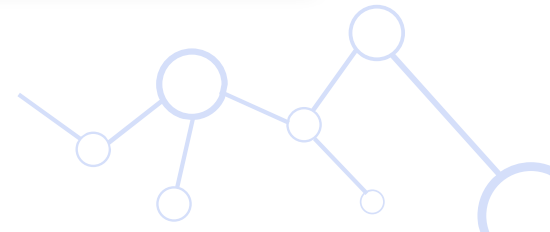


r

Automatic servo wear compensation for rough grinding(Manual+Auto integration), automatic cylinder wear compensation for polishing(Manual+Auto integration), fully automatic wear compensation, spindles are available to feed automatically, no need manual adjustment to reduce wheels wear & tear and lengthen the lifetime of grinding wheel.



Fully automatic wear compensation(Manual+Auto Integration)

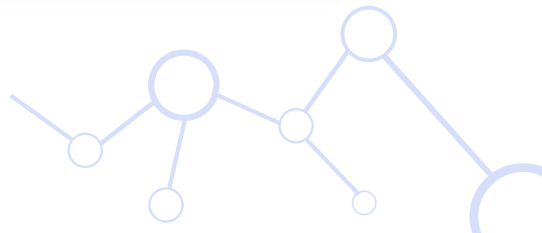
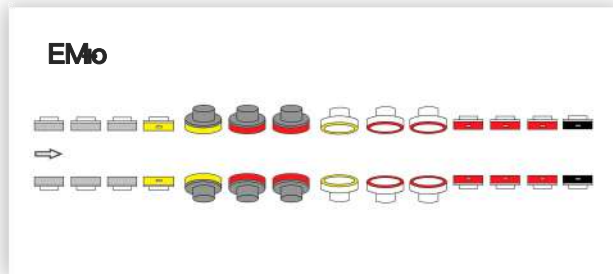
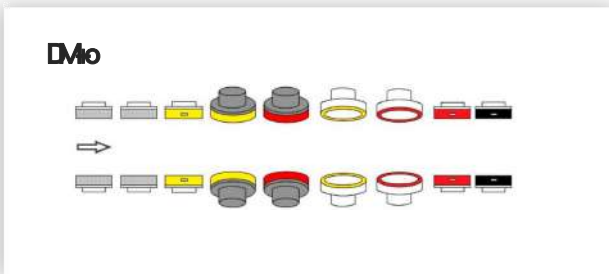
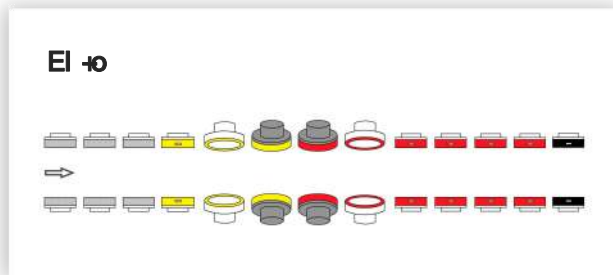
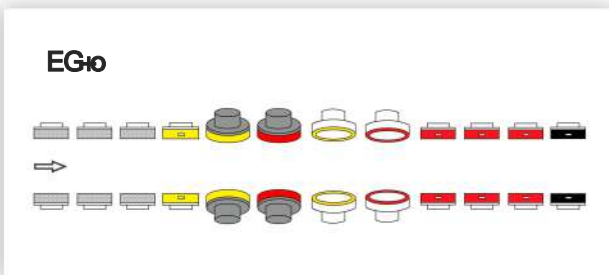


h

+

+

b



d +

h -g -k -w -d An A
f a A
: BB A A



Folga 富高

Folga 富高

Folga 富高

富高

Folga 富商



m ,n ,t

W

+



Folga 富商



r

t

Folga 富商

Folga 富商