



Taida Plastic Technologies (Zhongshan) Co., Ltd.

A professional manufacturer for plastic auxiliary equipments,
for more than 15 years

- Alibaba Shop: <https://sintd.en.alibaba.com/>,
- Web: <https://www.sintd.com/>
- Add: No.108 Industrial Avenue North, Xiaolan, Zhongshan, Guangdong, China, 528415
- Contacts: Amanda Lau
- Mob, Whatsapp, Wechat: +86 188 1439 9735
- Email: td6@sintd.com

About Us



TAIDA Plastic Technologies Zhongshan(headquarters)



TAIDA Plastic Technologies Anhui(branch company)

Located in Guangdong province, Taida Plastics Technologies (Zhongshan) Co., Ltd, was established in 2008. With the rapid development of the plastics industry, we've established a branch company-Anhui Taida Plastics Technologies Co., Ltd in 2011 in Wuhu City, Anhui Province.

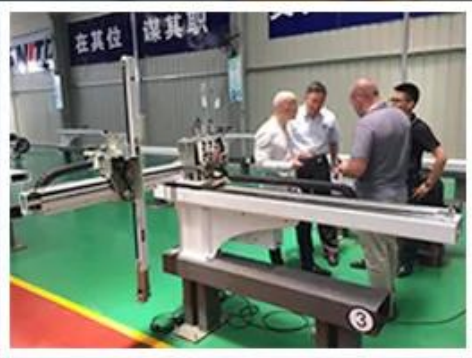
Our products consist of six series and three systems: Drying and Dehumidifying, Feeding and Conveying, Dosing and Mixing, Heating and Cooling, Granulating and Recycling, Intelligent Robot, Central Feeding System, Central Cooling System, PET System, design & production of non-standard automation.

We've not only gained more than 100 design patents for invention and new technology patents but also has passed the ISO9001; 2008 international quality management system certification as well as the European Union mandatory CE certification. In addition, we were honored as "GUANGDONG Well-Known Brand" in 2009 and won the honor title of "China Famous Brand" "New High-tech Enterprise" in 2012 and "China Credit Enterprise" in 2010, etc.

Sticking to our management principle and advanced technology, we've won our customers' support and trust, and our products are popularly exporting to more than 30 countries and regions such as Europe, American as well as Asia.

Factory Views

Standardized production management system



Euro Self-contained Hopper Loaders



Euro design with stainless steel hopper to keep material from pollutions, in addition, it has an attractive and polished appearance, and a sound proof motor cover to reduce noise level. And it is convenient to move. Remote operation becomes simple and convenient by using a detachable control panel.

Features:

- TAL-1.5U~TAL-12U use carbon brush motor with high rotation speed, large air flow. It is easy to install and move the small machine.
- Microprocessor control is easy to operate. Control the machine accurately with multiple alarm indicators.
- Indicators of motor started assurance.
- European two-proportion-valve electrical control function(optional)
- Hopper and Base can be adjusted to arbitrary direction.
- TAL-U use the magnetic switch, while TAL-U-E use the photoelectric proximity switch. It is sensitive, and in stable quality.
- All models are equipped with hinged hopper cover, convenient to clean the filter
- TAL-3U/6U and other larger models can be equipped with outer dia 275mm base, and mounted with hopper dryers THD-40U / THD-12 and other larger models (installation size: 180mmX180mm)
- TAL-1.5U model equipped with outer dia 220mm base can be mounted with THD-20U/40U (installation size: 140mmX140mm)
- TAL-U series are all with cloth filter, auto spray cleaning & dust removal device. Spray cleaning accumulators are optional to be used with TAL-6U and other larger models in order to reduce the manual cleaning times, and keep the equipment operation function.
- Standard insulated European aggregate bin TCH-6U/12U/24U are optional. Equipped with aggregate bin under the hopper with magnetic switch, the loader can be directly mounted to the injection molding machine.
- Upgraded to European Safety Circuit, add“CE” to the model.

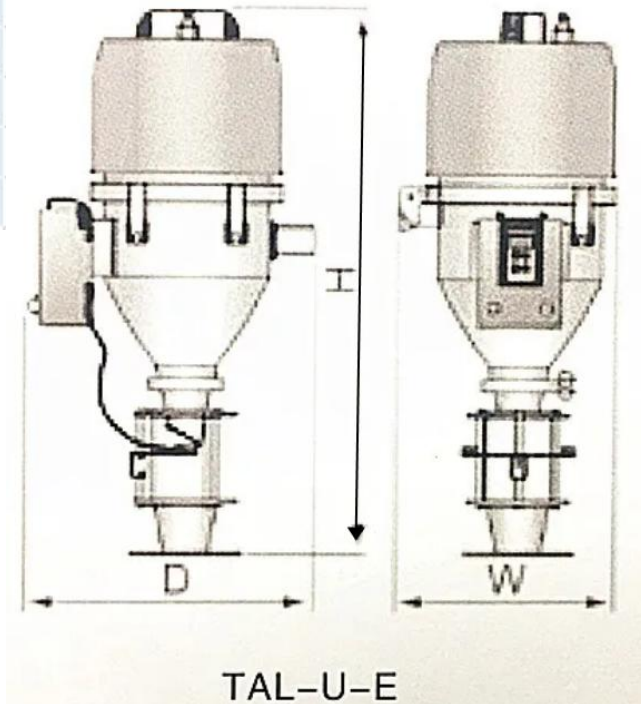
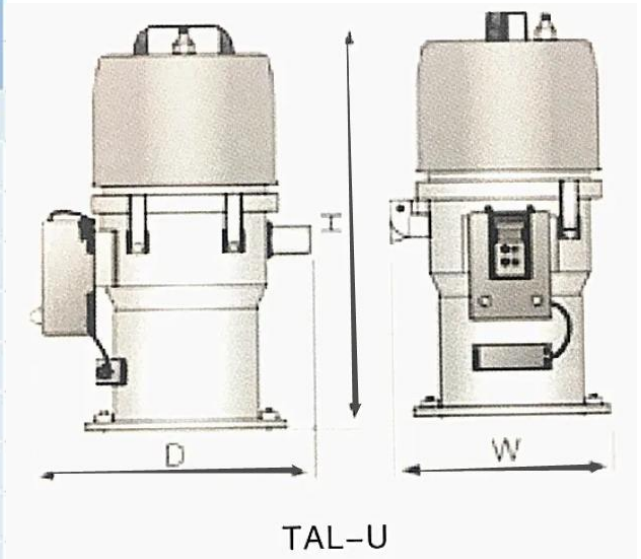


Euro Self-contained Hopper Loaders, Specifications:

Model	TAL-1.5U	TAL-3U	TAL-6U	TAL-12U	TAL-1.5U-E	TAL-3U-E	TAL-6U-E	TAL-12U-E
Motor type	Carbon Brush							
Motor power	0.42	0.42	1.15	1.15	0.42	0.42	1.15	1.15
Pipe Diameter	1.5"	1.5"	1.5"	1.5"	1.5"	1.5"	1.5"	1.5"
Conveying pipe internal dia.	1.5"	1.5"	1.5"	1.5"	1.5"	1.5"	1.5"	1.5"
Conveying capacity	150	200	300	400	150	200	300	400
Hopper volume	1.5	3	6	12	1.5	3	6	12
Power supply	1φ, 230V, 50Hz							
Reverse cleaning kit	normal	normal	normal	normal	normal	normal	normal	normal
Air accumulator	/	/	optional	optional	/	/	optional	optional
Dimensions								
Height H(mm)	525	555	645	745	670	740	800	935
Width W(mm)	270	305	340	340	260	305	340	340
Depth D(mm)	325	370	410	410	325	370	410	410
Weight(kg)	10	11	12	14	11	13	16	18

We reserve the right to change specifications without prior notice.

- NOTE:
- 1) Device that can auto-cleaning filter screen (use C to refer to, for example: TAL-3U-C...), use 4~6kg/cm² prepressure air.
 - 2) Air accumulator (apply to TAL-6U, 12U model only, use A to refer to, for example: TAL-6U-CA..).
 - 3) Conveying capacity test standard: (height: 4m).



Self-contained Hopper Loaders

The TAL-300 series use a high-speed motor in this lightweight and compact unit, with superior suction power and easy installation, it is particularly suitable for conveying new materials.

The TAL-400 series use a high pressure inductive motor with low noise level and long lifespan. It also has an automatic reversal dust cleaning device.

Features:

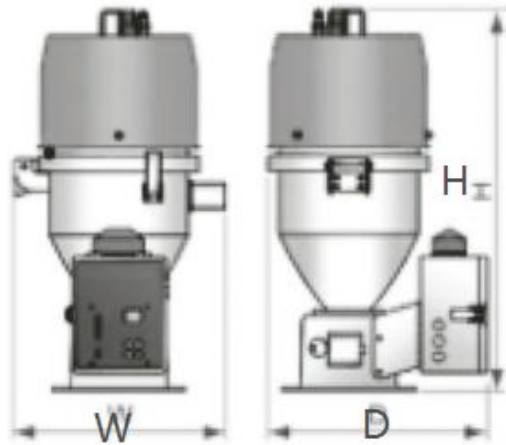
- Simple structure, easy in installation, operation and maintenance.
- Stainless steel hopper.
- Motor protective device.
- Electric equipments: Siemens or Schneider.
- Equip with auto reversal cleaning device and cloth filtering.
- Buzzer is an optional spare part for material shortage alarm.
- TAL-300E equips with oppsite-type photoelectric sensor and suitable to install on the material inlet of the molding machine.



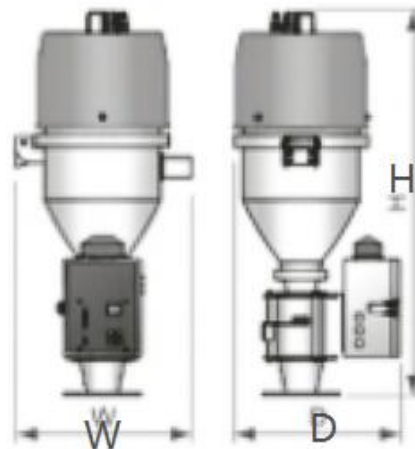
TAL-400C



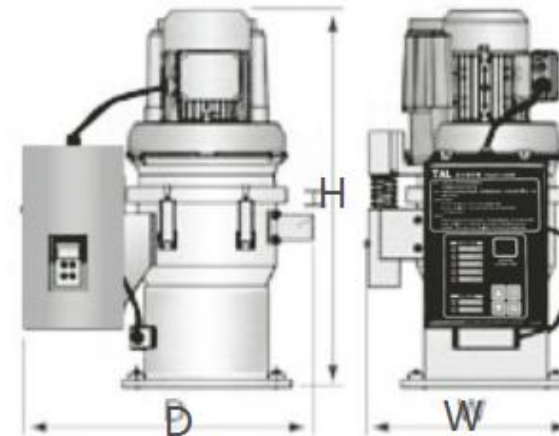
TAL-300E



TAL-300C



TAL-300E



TAL-400C



Self-contained Hopper Loaders, Specifications:



Model	TAL-300C	TAL-300G	TAL-300E	TAL-400C
Motor Type	Carbon Brush	Carbon Brush	Carbon Brush	Induction Type
Motor Power (W)	1150	1150	1150	750
Conveying Capacity(kg/hr)	180	180	180	250
Hopper Capacity(L)	6	6	6	6
Conveying Pipe Dia. (mm)	φ38	φ38	φ38	φ38
Input Voltage	1 phase, 220V, 50Hz			3 phase, 400V, 50Hz
Material Level Control	Micro-switch	Micro-switch	Opposite-type photoelectric sensor	Proximity Switch
Cloth Filter	√	NO	√	√
Auto-cleaning	√	NO	√	√
Dimensions(mm) H*W*D	595*300*395	595*300*395	730*300*365	670*280*450
Net Weight (kg)	13	12	17	26

Separate-Vacuum Hopper Loaders

Separate-vacuum hopper loaders are suitable for conveying material over long distance, the material hopper is installed away from the main unit and use of a stainless steel hopper eliminates material contamination, superior suction power is continuously available from the high efficient vacuum blower. Each model is completed with motor overload protector to prolong its life, and is also fitted with a material shortage alarm.

Features:

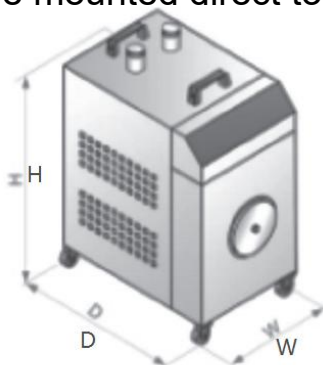
- Separate design of main unit and hopper receiver allows a great level of convenience when use;
- Stainless steel hopper receiver to eliminate contamination;
- Microprocessor controlled for easy of use;
- Digital display clearly shows operating status;
- Motor overload protector ensures long motor life;
- Audible material shortage alarm;
- Filter designed for easy cleaning;
- Observation window to check air filter status;
- Vacuum hopper receiver (THM type) can be mounted direct to machine hopper, glass-tube hopper receiver (TVH type) can be mounted direct to machine throat.



TAL-700G(主机)



TAL-800G/800G2(主机)



TAL-900G/900G2(主机)



TAL-700G+TMH-6L



TAL-800G+TMH-6L



TAL-900G一对二分体式填料机

Separate-Vacuum Hopper Loaders, Specifications:



Model					Hopper			Weight (kg)	Conveying hose dia (mm)	Conveying capacity (kg/hr)
Model No.	Motor Type	Motor Power (kw)	Dimensions (mm) H*W*D	Weight (kg)	Recommended model	Capacity (L)	Dimensions (mm) H*W*D			
TAL-700G	碳刷式 Carbon brush	1.15 (1Φ)	710×540×390	18	TMH-6L	6	450×260×300	6	1.5"	300
					TVH-6L		585×260×330	7		
TAL-800G	感应式 Inductive	0.85(3Φ)	370×620×420	40	TMH-6L	6	450×260×300	6	1.5"	300
					TVH-6L		585×260×330	7		
TAL-800G2	感应式 Inductive	1.6(3Φ)	710×540×390	47	TMH-12L	12	530×310×350	7	1.5"	500
					TVH-12L		680×310×350	10		
TAL-900G	感应式 Inductive	0.85(3Φ)	620×365×600	50	TMH-6Lx1	6	450×260×300	6	1.5"	500
					TVH-6Lx1		585×260×300	7		
					TMH-6Lx2		450×260×300	6		
					TVH-6Lx2		585×260×300	7		
TAL-900G2	感应式 Inductive	1.6(3Φ)	680×375×740	56	TMH-12Lx1	12	530×310×350	7	1.5"	700
					TVH-12Lx1		680×310×350	10		
					TMH-12Lx2		530×310×350	7		
					TVH-12Lx2		680×310×350	10		

Note:1) "2" stands for 2HP blower.

We reserve the right to change specifications without prior notice.

- 2) "G" stands for separate design of hopper receiver(s) and main unit.
- 3) "TMH" stands for vacuum hopper receiver, "TVH" stands for glass-tube hopper receiver.
- 4) Test condition of conveying capacity: vertical conveying height: 4m.
- 5) Power supply: 3Φ, 400V, 50Hz for all models except TAL-700G (1Φ, 230V, 50Hz)



European Separated Open-type Vacuum Loaders

The TAL-HP-UG series separate-vacuum hopper loaders are based on the established design and now are featured with more attractive appearance, better performance, and improved ease of operation. The whole range comprises of seven models equipped with vacuum blower from 1 to 15Hp. Economy models can be offered on request. The TAL-HP-UG series separate-vacuum hopper loaders have all features that comes with TAL-HP-UG series product. There is also double-stage blower available as an option. Different model of hopper is available for each individual output capacity needs, especially suitable for 30% and 100% powder loading.

Features:

- Data backed up on EEPROM in case of power failure.
- It consists of a cyclone dust separator and a dust collective bin to effectively reduce the load of filter. It can be equipped with two proportional valve
- Stainless Steel mesh filter as standard. Optional filter cleaning device available for automatic
- cleaning (model denotes“C”) and air accumulator to TAL-12U-C/CE and model above.
- Economy models can be offered on request.(Cloth filter as standard,second filter is removed).
- Provide both standard and optional heat-insulative Euro collective hopper TAL-6U/12U/24U for Selection(Excepe for TAL-UGP series, which will use special collective hopper).
- Based on customer's demand, the cloth bag type and plate-type filters can be selected to the machine.
- The air accumulator and self-cleaning device are standard equipment.
- On customer's demand,TAL-UG main unit (3.5HP above) can be equipped with either single stage or double stage blower
- Upon request, it can be built to comply with worldwide electrical safety standards (For example: CE) .



TAL-US



THR-U



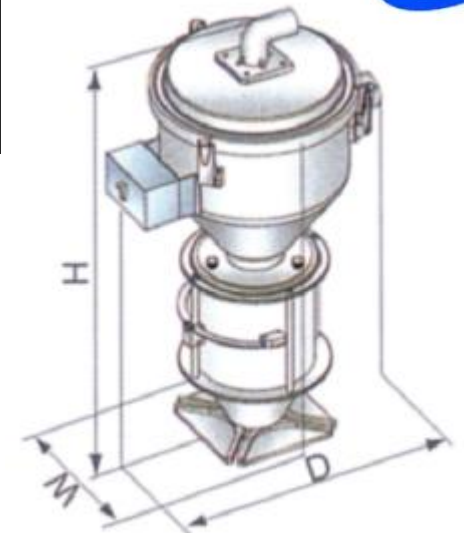
THR-U-E



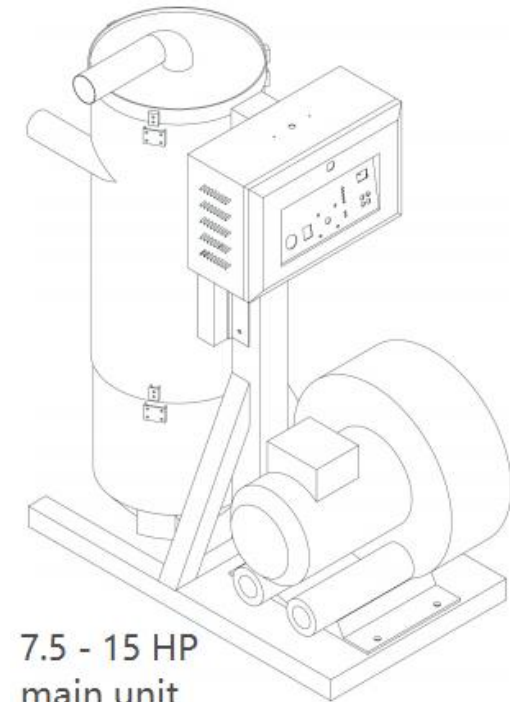
European Separated Open-type Vacuum Loaders, Specifications:



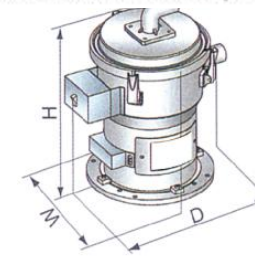
Model	Main unit			Hopper Receiver				loading pipe dia. (inch)	Air suction pipe Dia. (inch)	Loading capacity (kg/hr)
Model No.	Motor Power (kw)	Dimensions (mm) H*W*D	N.W (kg)	Applicable Model	Capacity (L)	Dimensions (mm) H*W*D	N. W (kg)			
TAL-1HP-UG	0.85(3φ)	1205x350x530	46	THR-6Ux1	6	420x285x360	6	1.5"	1.5"	300
		960x350x405	39	THR-6U-Ex1		600x275x360	8			
TAL-2HP-UG	1.6(3φ)	1205x350x530	46	THR-12Ux1	12	470x315x400	7	1.5"	1.5"	500
		960x350x405	39	THR-12U-Ex1		700x315x400	12			
TAL-3.5HP-UG	3(3φ)	1380x490x570	73	THR-24Ux1	24	690x315x400	9	2"	2"	750
		1110x420x545	62	THR-24Ux1		690x315x400	13			
TAL-5HP-UG	3.7(3φ)	1380x490x570	74	THR-24U-Ex1	24	1120x360x400	9	2"	2"	1000
		1110x420x545	65	THR-24U-Ex1		1120x360x400	13			
TAL-7.5HP-UG	5.5(3φ)	1830x585x675	156	THR-36Ux1	36	963x315x400	11	2"	2.5"	1200
		1200x460x580	112							
TAL-10HP-UG	7.5(3φ)	1830x585x675	160	THR-36Ux1	36	930x315x400	11	2"	2.5"	1600
		1200x460x580	116							
TAL-15HP-UG	11(3φ)	2100x680x800	228	THR-48Ux1	48	975x350x485	15	2.5"	3"	2000
		1260x560x800	210							



THR-U-E



7.5 - 15 HP main unit



THR-U

Note:

- 1:"D" denote as double stage blower (126 denote as one to six receiver system);
- 2:"E" denote as machine direct mount receiver(glass type)
- 3:For hopper inside polished, add "P" at model behind;
- 4:It's available to select ACF-1 cyclone dust separator;
- 5:TAL-3.5HP-UG and above models has vacuum breaking valve to improve loading capacity ability;
- 6:Noise level 75db;
- 7:Test condition of conveying capacity,Plastic material of buld density 0.65;
- 8:Power supply:3phass 380V 50Hz.

we reserve the right to change specifications without prapor notice.

One-to-six Separate Type Hopper Receiver

"One-to-six" separate hopper loaders are designed and developed on the basis of original Euro separate-vacuum hopper loaders. They have strong suction, easy to operate, and is safe and convenient, which equip with a high pressure blower or six THR-U type

Euro central vacuum hoppers, applicable to multiple dehumidifying and drying unit(dehumidifying dryer"TDD") or storage hopper to process plastic materials. Besides that, it can also realize the "One-to-six"way of conveying material to different moulding machines or hoppers to greatly lower the cost and space .

Features:

- "One-to-six" hopper loader can greatly lower the cost.
- The extensibility of the controller is good, convenient for the upgrade of the hardware and stable program.
- WATCHDOG technology makes the hardware components of the microcomputer controller have autodiagnosis ability, which can self detect fault and sound the alarm.
- The dust collective chamber features a cyclone separator and a dust collective bin to effectively reduce the load of the filter.
- To ensure smooth material conveying,hopper receiver has diaphragm valve equipped on.
- Main unit equips with faults and motor overlaod indicators to show fault fast.
- CE safety plug ensures safe and reliable operation.
- Universal mounting bracket for hopper receiver with max, adjustable can be supplied as option.
- Optional collective hopper can be directly mounted on the moulding machine,when working with a glass-tube hopper receiver.



One-to-six Separate Type Hopper Receiver, Specifications:



Model	Main unit			Hopper Receiver				loading pipe dia. (inch)	Air suction pipe Dia. (inch)	Loading capacity (kg/hr)
Model No.	Motor Power (kw)	Dimensions (mm) H*W*D	N.W (kg)	Applicable Model	Capacity (L)	Dimensions (mm) H*W*D	N.W (kg)			
TAL-3.5HP-UGS	3 (3φ)	1380x490x570	73	THR-24Ux1	24	690x315x400	9	2"	2"	750
		1110x420x545	62	THR-24Ux1		690x315x400	13			
TAL-5HP-UGS	3.7 (3φ)	1380x490x570	74	THR-24U-Ex1	24	1120x360x400	9	2"	2"	1000
		1110x420x545	65	THR-24U-Ex1		1120x360x400	13			
TAL-7.5HP-UGS	5.5 (3φ)	1830x585x675	156	THR-36Ux1	36	963x315x400	11	2"	2.5"	1200
		1200x460x580	112							
TAL-10HP-UGS	7.5 (3φ)	1830x585x675	160	THR-36Ux1	36	930x315x400	11	2"	2.5"	1600
		1200x460x580	116							
TAL-15HP-UGS	11 (3φ)	2100x680x800	228	THR-48Ux1	48	975x350x485	15	2.5"	3"	2000
		1260x560x800	210							

We reserve the right to change specifications without prior notice.

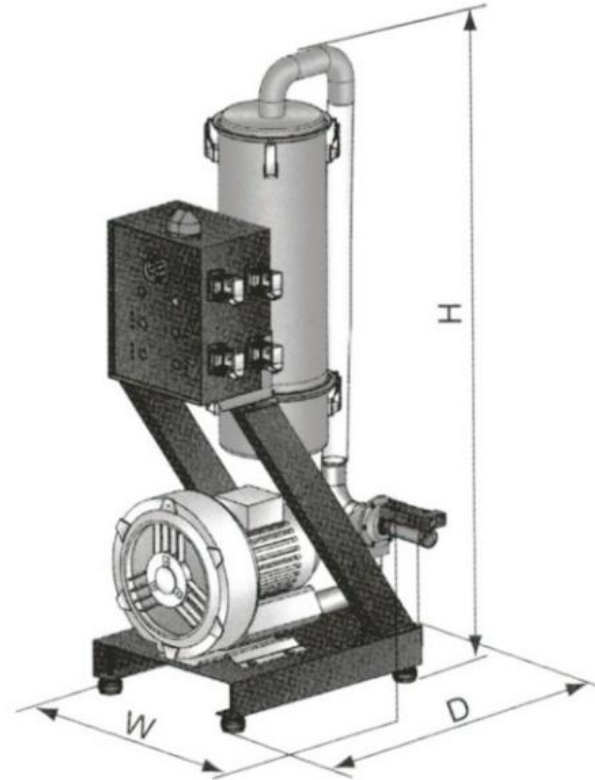
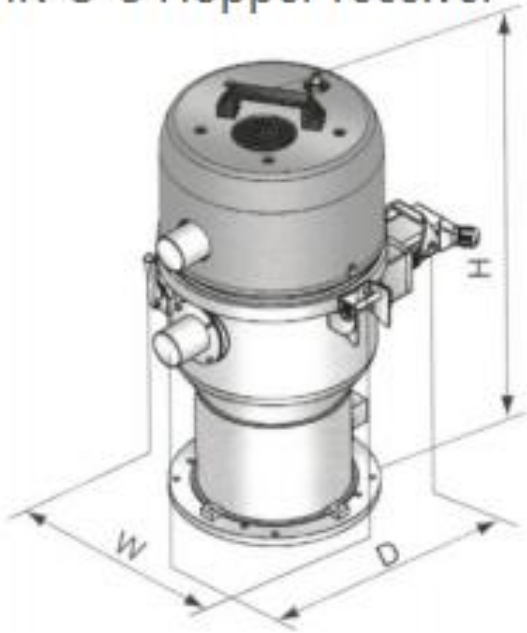
One-to-six Separate Type Hopper Receiver



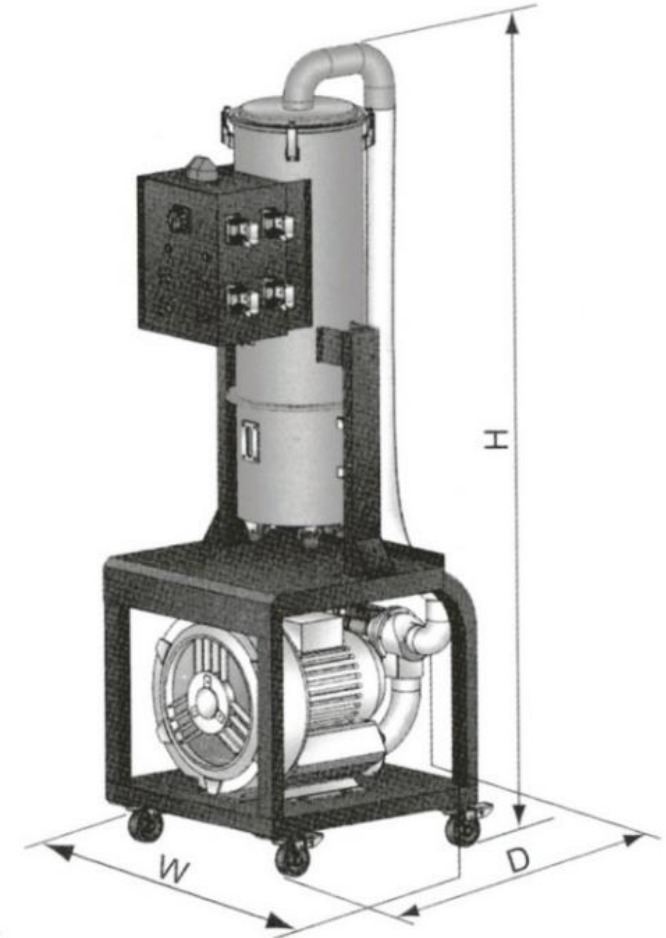
Note:

- 1) "D" denote as double stage blower. (126 denote as one to six receiver system)
- 2) "E" denote as machine direct mounted receiver (glass type).
- 3) For hopper inside polished, add "P" at model behind.
- 4) It's available to select ACF-1 cyclone dust separator.
- 5) Vacuum breaking valve to protect the blower.
- 6) Noise level 75db.
- 7) Test condition of conveying capacity. Plastic material of bulk density 0.65, Dia 3-5mm, Vertical conveying height:4m, horizontal conveying distance:5m.
- 8) Power supply:3,400V,50Hz.

THR-U-S Hopper receiver



TAL-3.5HP~5HP-UG126 Main unit



TAL-7.5HP~10HP-UG126 Main unit

Venturi Loaders



Venturi loaders use fast flowing pressurised air to create a vacuum that is used to convey various plastic granule. Air pressure is around 5-6kg/cm².

Features:

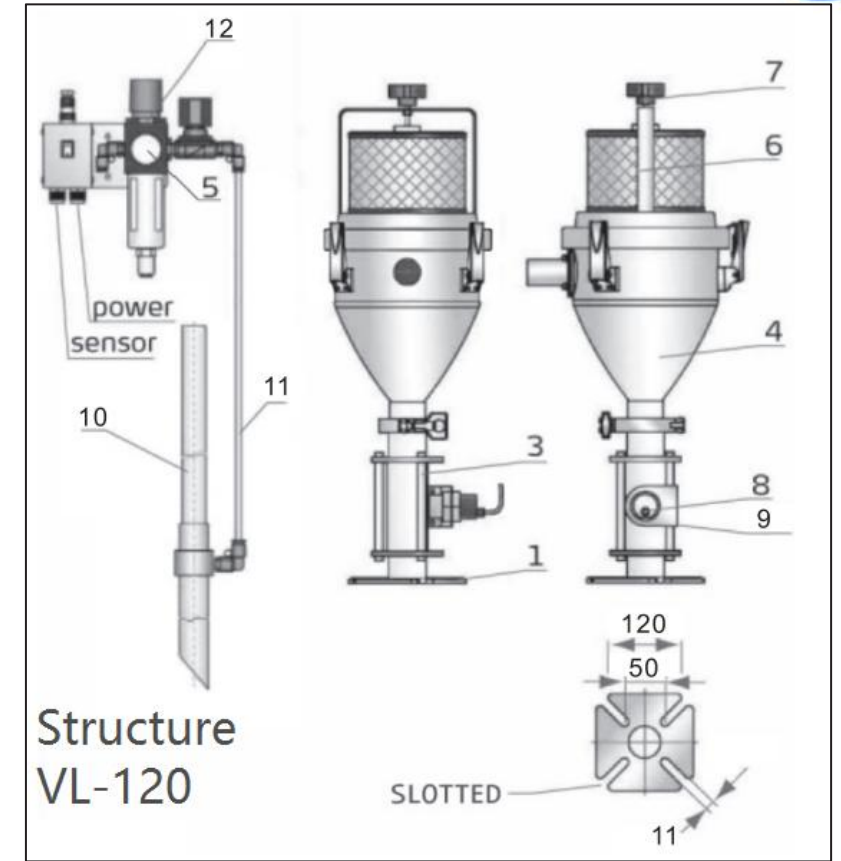
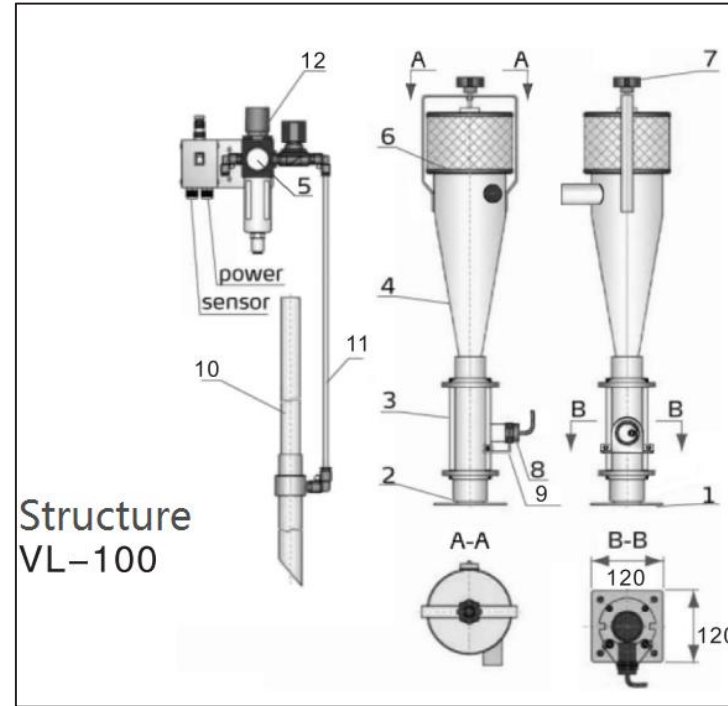
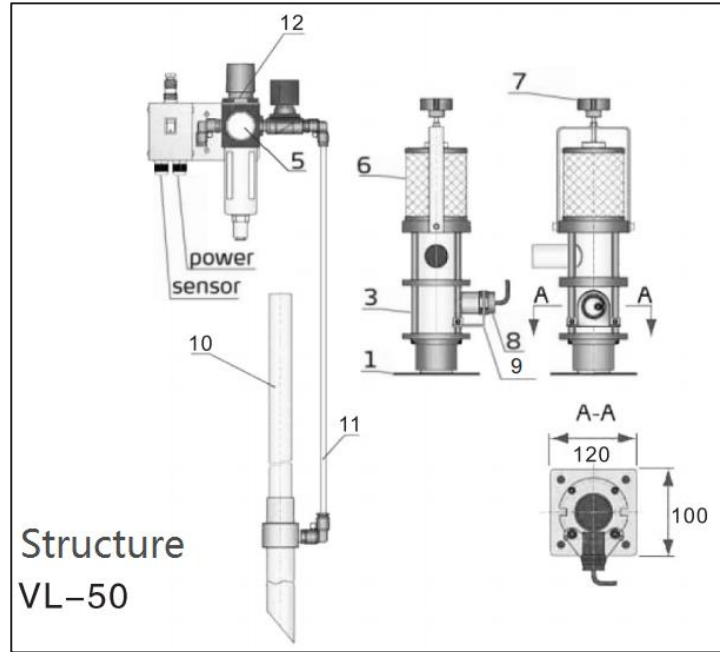
- Euro style, compact in size and light-weight;
- Stainless steel material hopper and base;
- Environmentally Friendly and low noise;
- Sensor for accurate level sensing of material;
- Compressed air filter to eliminate moisture;
- Regulator to maintain steady air pressure;
- Quick installation and easy operation;
- Easy access to material hopper when cleaning;
- Direction of hopper and base is adjustable.



Venturi Loaders



Structure: 1. Base, 2. O-ring, 3. Flange connecting rods, 4. Hopper, 5. Pressure Gauge, 6. Air filter, 7. Clamping knob, 8. Sensor (Proximity Switch), 9. Sensor Bracket, 10. Suction Probe, 11. Air pipe 3/8" poly 3/8" , 12. Compressed-air filter & regulator



Model	Conveying Capacity(kg/hr)	Hopper Capacity(L)	Max. Conveying Distance(m)	Pipe Dia. (inch)	Suction Pipe Length(mm)	Dimension LXWXH (mm)	Net Weight(kg)
VL-50	40	0.5	6	1.25"	900	150X145X380	4.5
VL-100	60	2.8	6	1.25"	900	160X165X720	7
VL-120	80	3	6	1.25"	900	280X240X630	7.5

Voltage: 1Φ, 230V 50Hz

Screw Feeder Series

Spiralfeeding machine is mainly used to convey powder, sheet, and recycled material that is not easy to be conveyed in vacuum, reducing dust, labor intensity and improve labor efficiency; They can be divided into two kinds: stainless steel and carbon steel according to the material.The materialinlet can be round or square.

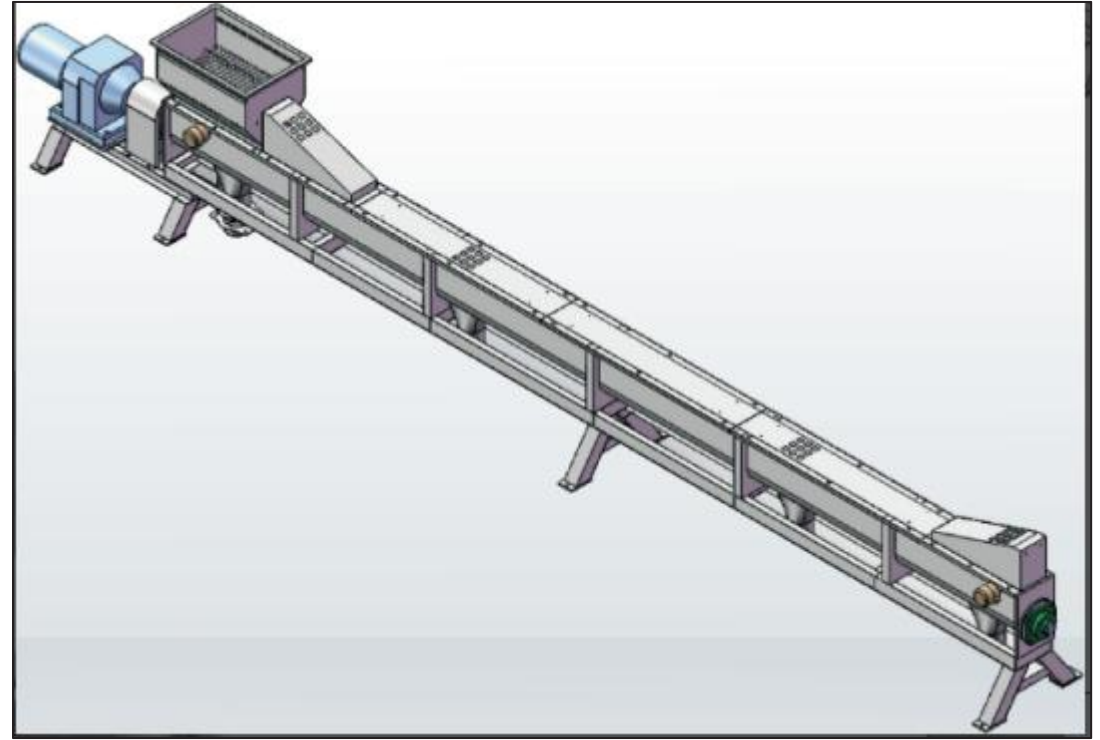
Non-standard
customization



U Type Automatic Powder Conveying



- Materialis transported and feeded under sealed environment.
- No dust flying and leaking, it is good to environment and operator.
- Without any transmission parts or easy-polluted components, can be widely used in the clean environment
- No heat generated during processing, can meet the anti-explosion demand.
- Easy clean,and being convenient.
- Convenient cleaning



Non-standard customization

