

Gravimetric BLENDER

称重式拌料机

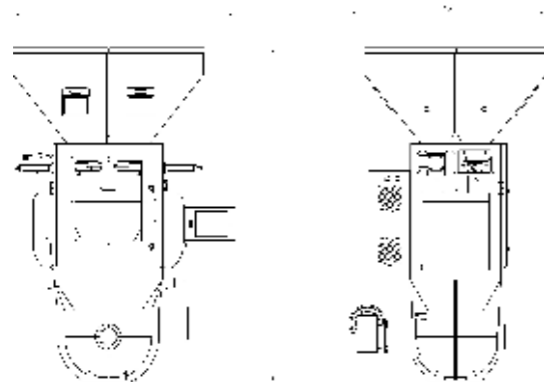
产品特点 Features

- 采用抗干扰能力更强的单芯片微处理器，开机自动校准；
 - 适用于塑料射出、压出、中空成型等需要多种原料按精确比例混合的使用场景；
 - 所有物料通过重力计量后均匀混合，精确高效；
 - 可以直接安装在成型设备上，也可增配脚架安装于地面；
 - 使用脚架安装于地面时，配备气动截料阀、储料桶、吸料盒；
 - 采用EEPROM记忆体，切断电源后设定资料不会流失，免用电池。
- Adopting single-chip microprocessor with stronger anti-interference ability, automatic calibration on power-on.
 - Suitable for plastic injection, extrusion, hollow molding and other applications that require multiple raw materials to be mixed in precise proportions.
 - All raw materials are gravimetrically measured and then mixed; strict control of precision.
 - Can be installed directly on the molding machine or with additional floor stand.
 - When install with floor stand, it is equipped with pneumatic cutting valve, storage bucket and suction box.
 - Using eeprom with memory storage system, the setting data will not be lost after cutting off the power, battery-free.



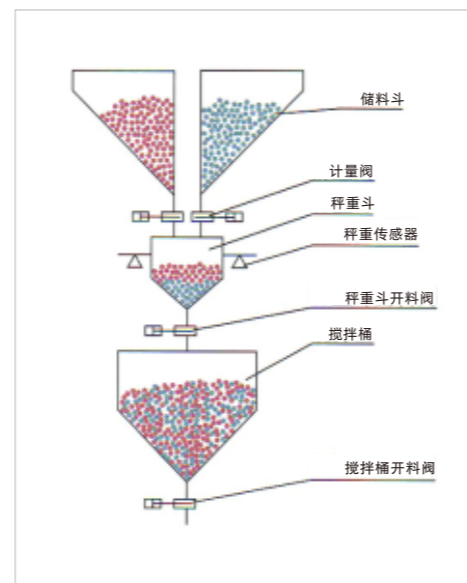
TGB-600-4-1R

外形尺寸图 Outline drawing



尺寸(mm)	机型 Model	TGB-40	TGB-80	TGB-200	TGB-600	TGB-1200
L		810	885	910	1100	1206
W		630	675	785	945	1095
H		1040	1135	1215	1647	1985
L1		305	305	340	500	600

工作原理图 Working Principle



规格参数 Specifications

机型 Model	组份数量 Group number	闸刀计量阀数量 Knife metering quantity	螺杆计量阀数量 Screw metering quantity	最大批处理量 (kg) Maximum batch quantity	压缩空气 (kg/cm ²) compress air	拌料马达功率 (KW) Mixing motor power	最大产量 (kg/hr) Maximum output	机器电压规格 Machine voltage specification
TGB-40	4	4	—	1	5-6	0.37	40	3Φ,380V,50Hz
	4-1R	3	1				40	
	4-2R	2	2				35	
	4-3R	1	3				30	
	3	3	—				50	
	3-1R	2	1				50	
	3-2R	1	2				45	
TGB-80	2	2	—	2	5-6	0.37	60	
	2-1R	1	1				55	
	4	4	—				80	
	4-1R	3	1				80	
	4-2R	2	2				65	
	4-3R	1	3				50	
	3	3	—				90	
TGB-200	3-1R	2	1	3.5	5-6	0.55	90	
	3-2R	1	2				70	
	2	2	—				140	
	2-1R	1	1				120	
	4	4	—				200	
	4-1R	3	1				200	
	4-2R	2	2				180	
TGB-600	4-3R	1	3	12	5-6	0.75	160	
	3	3	—				220	
	3-1R	2	1				220	
	3-2R	1	2				160	
	2	2	—				350	
	2-1R	1	1				240	
	4	4	—				600	
TGB-1200	4-1R	3	1	25	5-6	1.5	600	
	4-2R	2	2				520	
	4-3R	1	3				500	
	3	3	—				650	
	3-1R	2	1				650	
	3-2R	1	2				500	
	2	2	—				1000	
TGB-1500	2-1R	1	1	30	5-6	1.5	700	
	4	4	—				1200	
	4-1R	3	1				1200	
	4-2R	2	2				1100	
	4-3R	1	3				1050	
	3	3	—				1300	
	3-1R	2	1				1300	
TGB-2000	3-2R	1	2	40	5-6	2.2	1400	
	2	2	—				1500	
	2-1R	1	1				2200	
	3	3	—				2000	
	3-1R	2	1				2100	
	3-2R	1	2				2000	
	4	4	—				2000	
TGB-2000	4-1R	3	1	4	5-6	2.2	2000	
	4-2R	2	2				1900	
	4-3R	1	3				1800	
	4-3R	1	3				1800	

- 1)混合配比误差是指各组分的设定百分比与实际百分比的差值
 - 2)闸刀计量阀适合于5% (含) 以上的比例，混合配比误差能控制在±0.3%以内
 - 3)螺杆或重见微量计量阀适合5% (不含) 至0.5%的比例，混合比例误差能控制在±0.1%
 - 4)以上最大处理量和混合配比误差数据是以堆积度0.8、直径为3~4mm的颗粒均匀原料以连续运转方式测量所得的数据。
- 1)The mixing ratio error refers to the difference between the set percentage and the actual percentage of each component.
 - 2)The gate knife metering valve is suitable for more than 5% (including) of the proportion, mixing and proportioning error can be controlled within ± 0.3%.
 - 3)Screw or re-see micro metering valve suitable for 5% (excluding) to 0.5% of the proportion, mixing ratio error can be controlled within ± 0.1%.
 - 4)The above maximum processing capacity and mixing ratio error data are obtained by measuring the particle uniform raw material with a packing degree of 0.8 and a diameter of 3-4mm in continuous operation.

注：产品规格若有变更，恕不另行通知
We reserve the right to change specifications without prior notice.

Proportional VALVES

两料比例阀

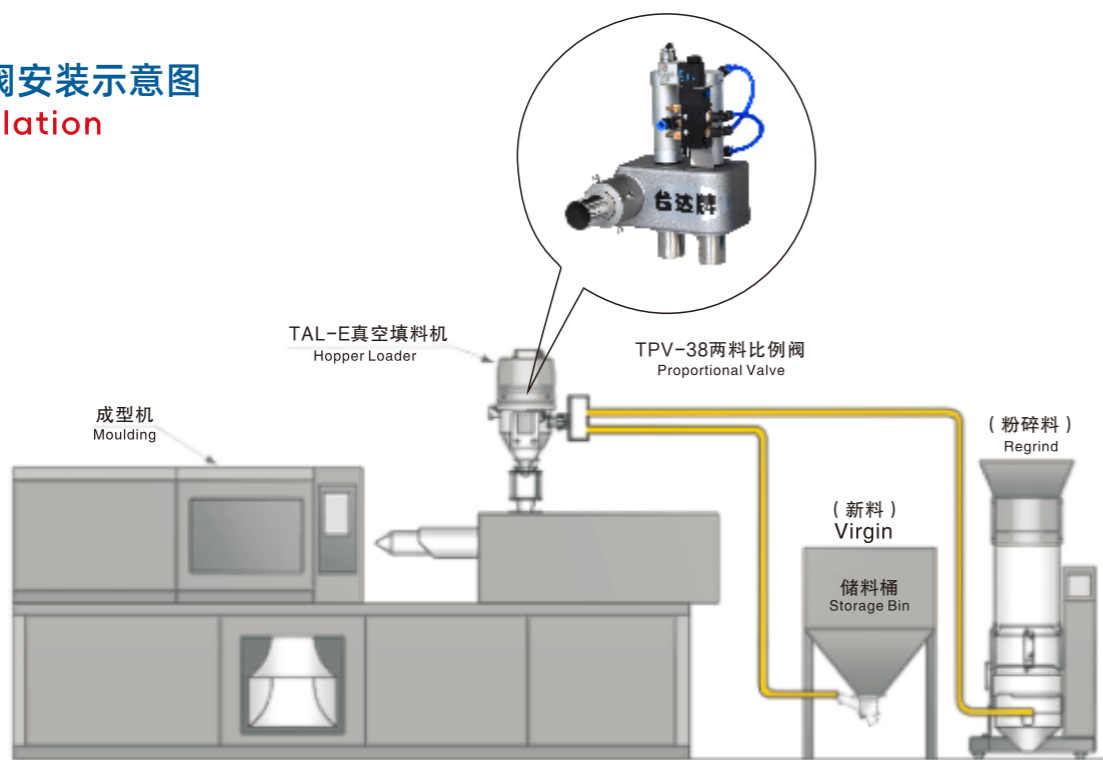
产品特点 Features

- 控制新料和旧料按一定比例进行输送作业；
 - 可直接安装在吸料机或管路上；
 - 电磁阀、气缸性能稳定，确保混合比例准确；
 - 可配备独立电控箱，方便操作。
- Control of new and used materials in a certain ratio for conveying operations.
 - Can be installed directly on the suction machine or pipeline.
 - Solenoid valve, cylinder performance is stable, to ensure accurate mixing ratio.
 - Can be equipped with independent electric control box, easy to operate.



TPV-38U

比例阀安装示意图 Installation



规格参数 Specifications

机型 Model	驱动力 Compressed air	驱动方式 Driven Means	最大通过量 Maximum MATERIAL Flow	配管尺寸 Pipe Size	外部尺寸 Dimensions HxWxD	净重(KG) Net weight
TPV-50	3Kgf/cm ² 高压空气	气缸 Air cylinder	550Kg/hr	50.8mm	5	

机器电压规格为1Φ, 220V, 50Hz.
Power: 1Φ, 220V, 50Hz.

注：产品规格若有变更，恕不另行通知。
We reserve the right to change specifications without prior notice.

Rotary Color MIXER

滚桶式混色机

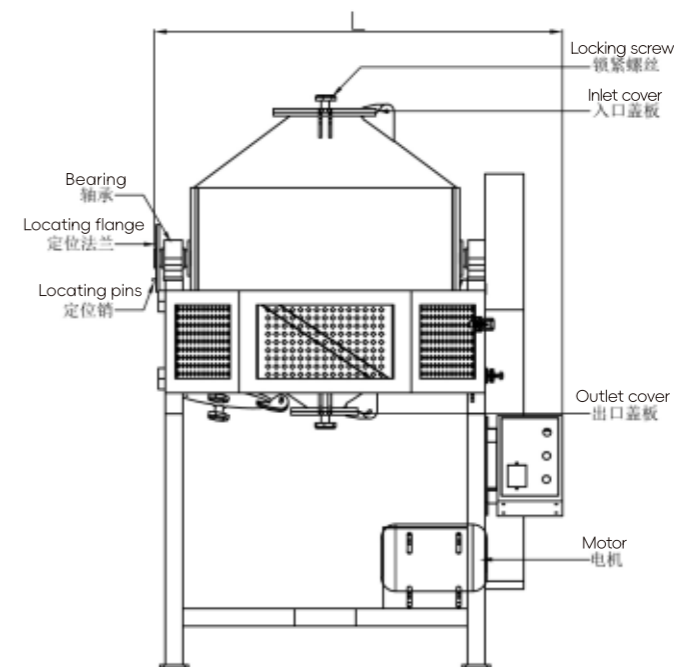
产品特点 Features

- 桶体采用进口不锈钢制造，焊接牢固，表面光亮，易清洗；
 - 全方位360度旋转混合，入料、出料任意定位，操作方便；
 - 首创网孔保护罩，结构合理，美观实用，确保操作安全；
 - 计时器可在0~30分钟之间选择混料时间。
- Barrel is made of imported stainless steel, firmly welded, bright surface, easy to clean.
 - All-round 360-degree rotation mixing, feed, discharge arbitrary positioning, easy to operate.
 - First mesh protective cover, reasonable structure, beautiful and practical, to ensure the safety of operation.
 - Timer allows you to select the mixing time between 0 and 30 minutes.



TRM-100

结构简图 Structure Diagram



规格参数 Specifications

机型 Model	功率/Power		容量 (kg) Capacity	转速 (r/min) Rotating speed	电压 (V) Voltage	外形尺寸 (mm) Dimensions LxWxH	净重 (kg) Net Weight
	Kw	HP					
TRM-50	1.5	2	50	50	380 3Φ	960 × 1165 × 1560	120
TRM-100	1.5	2	100	50	380 3Φ	1050 × 1250 × 1590	250