



Sunole is an **olefin-based** synthetic yarn that is highly durable for **outdoor conditions**. Sunole also offers **high color fastness** and **minimal strength loss** when exposed to solar radiation.

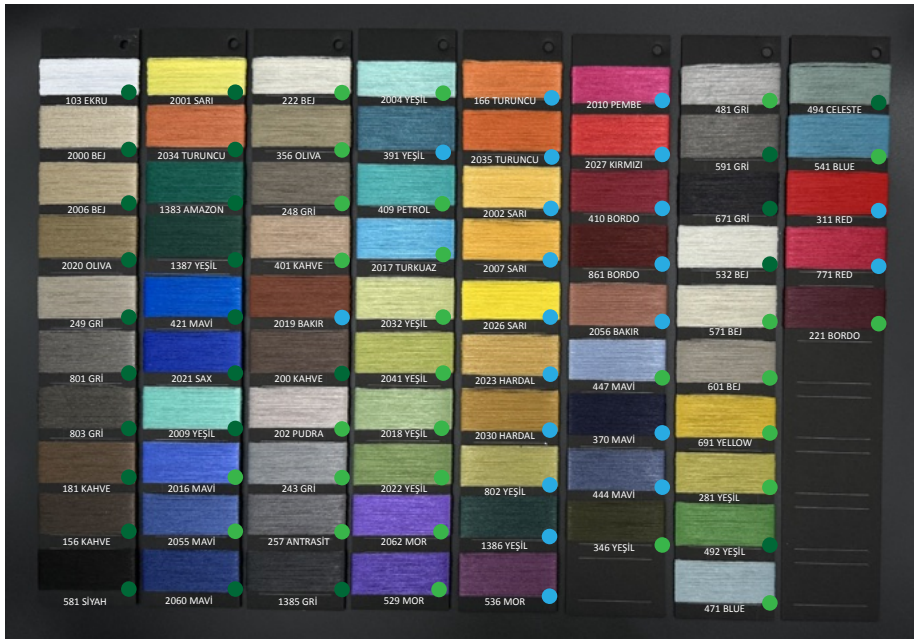
It provides excellent protection **against the sun** and **weather conditions** due to the use of **additives & special pigments** during production. Since adding only UV is not enough for making the product outdoor, the use of special pigments is crucial.

There are more than **10.000 tests** conducted to **increase the color fastness** and **prevent material aging**. We keep on testing to provide a **quality control** and maintain a comparison with the market products.



BASE COLORS

There are **74 unicolors** of **SUNOLE** that are tested.



**The photos might differ from the real color. Please request the color card.*

ISO EN 105 B04
Artificial Weathering Test

- Grade 8
- Grade 7+
- Grade 7
- Grade 6



**SUNOLE offers a variety of yarn qualities, including ATY, DTY, and Fancy, available in both unicolor and melange options.*

NEW COLORS

There is an option to request **new colors** with the **minimum order quantity** of **2 tons per color**. However, since the **testing lasts 3 months**, we cannot guarantee the color fastness for new colors.

MULTI-COLORS

There is an option to create countless multicolors using the base colors provided.

PRODUCT LIST

Group	Article	Color Uni/Multi	Main Colors	Actual Denier	Delivery Time Weeks	Cone		Jumbo Box			Box		
						Size (cm)	kg	Size (cm)	Pcs.	kg	Size (cm)	Pcs.	kg
ATY (Air Textured Yarn)	SUNOLE 310	U/M	30	340	1-2 W	23D/29L	3,0	100x120x135H	80	240	50x60x30H	5	15
	SUNOLE 300 T (Twisted)	U	70	345	2-3 W	19D/23L	1,9	100x120x135H	160	304	50x60x25H	8	15
	SUNOLE 500	U/M	27-70	500	1-2 W	23D/29L	3,0	100x120x135H	80	240	50x60x30H	5	15
	SUNOLE 700	U/M	70	675	1-2 W	23D/29L	3,1	100x120x135H	80	248	50x60x30H	5	16
	SUNOLE 1000	U/M	70	990	1-2 W	23D/29L	3,6	100x120x135H	80	288	50x60x30H	5	18
	SUNOLE 1300	U/M	70	1330	1-2 W	23D/29L	3,6	100x120x135H	80	288	50x60x30H	5	18
	SUNOLE 2000	U/M	70	2030	1-2 W	23D/29L	3,6	100x120x135H	80	288	50x60x30H	5	18
	SUNOLE 2700	U/M	70	2660	1-2 W	23D/29L	3,6	100x120x135H	80	288	50x60x30H	5	18
	SUNOLE 2000 DEGRADE	M	70	2030	1-2 W	23D/29L	3,6	100x120x135H	80	288	50x60x30H	5	18
SUNOLE 2700 DEGRADE	M	70	2650	1-2 W	23D/29L	3,6	100x120x135H	80	288	50x60x30H	5	18	
DTY (Draw Textured Yarn)	SUNOLE 150 DTY	U	30	155	1-2 W	19D/29L	2,5	100x120x135H	128	320	50x60x30H	8	20
	SUNOLE 300 DTY	U/M	30	320	1-2 W	19D/29L	2,5	100x120x135H	128	320	50x60x30H	8	20
	SUNOLE 450 DTY	U/M	30	470	1-2 W	19D/29L	2,5	100x120x135H	128	320	50x60x30H	8	20
	SUNOLE 600 DTY	U/M	30	630	1-2 W	19D/29L	2,5	100x120x135H	128	320	50x60x30H	8	20
FANCY / BOUCLE	SUNOLE BOUCLE 3200	U/M	70	3070	2-3 W	23D/23L	2,7	100x120x135H	100	270	50x60x25H	5	14
	SUNOLE BOUCLE 5600	U/M	70	5450	2-3 W	23D/23L	2,7	100x120x135H	100	270	50x60x25H	5	14
	SUNOLE BOUCLE 8600	U/M	70	8500	2-3 W	23D/23L	2,7	100x120x135H	100	270	50x60x25H	5	14
	SUNOLE DTY BOUCLE 2900	U/M	30	2750	2-3 W	23D/23L	2,5	100x120x135H	100	250	50x60x25H	5	13
	SUNOLE DTY BOUCLE 3900	U/M	30	3650	2-3 W	23D/23L	2,5	100x120x135H	100	250	50x60x25H	5	13
	SUNOLE DTY BOUCLE 4900	U/M	30	4750	2-3 W	23D/23L	2,5	100x120x135H	100	250	50x60x25H	5	13
CF-FDY (Fully Drawn Yarn)	SUNOLE 300 CF	U	70	311	Stock	36D/15L	7,0	115x115x125H	63	441	75x37x15,5	2	14
	SUNOLE 150 CF	U	30	154	Stock	36D/15L	7,0	115x115x125H	63	441	75x37x15,5	2	14
CHENILLE CF	NM4 (NM6-NM2,5)	U/M	30-70	-	3-4 W	19D/23L	1,4	100x120x135H	160	224	50x60x25H	8	11
CHENILLE DTY	NM4 (NM6-NM2,5)	U/M	30	-	3-4 W	19D/23L	1,4	100x120x135H	160	224	50x60x25H	8	11
FR SUNOLE	ATY 300 - 2000	U/M	-	-	3-4 W	23D/29L	3,6	100x120x135H	80	288	50x60x30H	5	18
	CF 150 - 300	U	-	-	3-4 W	36D/15L	7,0	115x115x125H	63	441	75x37x15,5	2	14
	BOUCLE / CHENILLE	U/M	-	-	4-5 W	19D/23L	-	100x120x135H	-	-	50x60x25H	-	-

MOQ is Jumbo Box for all items

1/2 MOQ with 0,10 Euro surcharge

60-80 kgs (depending yarn) 0,20 Euro Surcharge

**Please ask for special production*

TEST METHODS

ISO EN 105 B04

Colour Fastness to Artificial Weathering

The test determines the light fastness of a dyed or printed textile product during the production process and usage. This test makes a great contribution to benchmarking, analyzing the problem that may occur in the early period, examining the effect of additives on color and obtaining the right formulation.

ASTM G154

Determination of the Effect of Accelerated Weathering

Accelerated weathering device simulates the effects of sunlight, rain, moisture and dew on textile products. It makes it possible to monitor the observations that will last for years in the external environment by reducing them to weekly basis.

Owing to the accelerated weathering device, which is one of the most important devices of our laboratory, potential problems are analyzed at the R&D stage and the integration of textile products into outdoor conditions are ensured.

Thanks to the latest model devices in our laboratory, we closely monitor the performance of our products in R&D and production stages.

**We offer to test the Sunole fabrics produced by our customers.*

TWISTING

150 to 70.000 deniers possible for twisting. **Single or multi twisting** is available.

FINISHING

During the finishing process, the temperature should not exceed the 120 C +/- 10 C degrees, at the suitable speed. Otherwise, the fabric can get hard or water repellency can be inefficient.

**All counts are in deniers.*

**Flame retardant version is available upon request.*