



SAN. YEDEK PARÇA HAF. TİC. LTD. ŞTİ.

www.kocabeymakina.com.tr

Organize Sanayi Bölgesi, Ceyhan Yolu Üzeri, Sarıçam / Adana / TÜRKİYE
Tel.: +90 322 - 394 3178 • 394 3010 • 394 3070 • Fax: +90 322 - 394 3279
info@kocabeymakina.com.tr
GSM: +90 532-156 7889



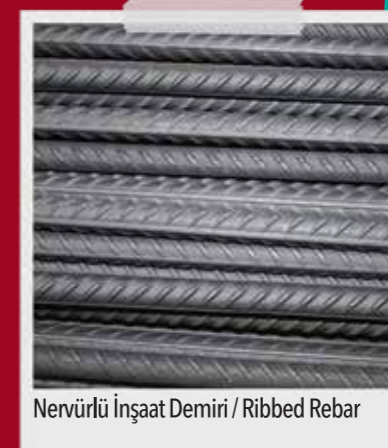
KCM 200 - 38000

GALVANİZLİ TEL DOĞRULTMA ve KESME MAKİNASI

**KCM 200 - 38000
GALVANISED WIRE STRAIGHTENING CUTTING MACHINE**



Galvanizli Tel / Galvanized Wire



Nervülü İnşaat Demiri / Ribbed Rebar



Saplama / Stud Bolt



Çekilmiş Son Ürün/Cold Drawn Final Product



Çelik Hasır / Wire Mesh

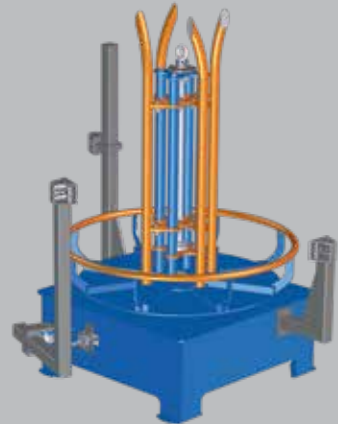
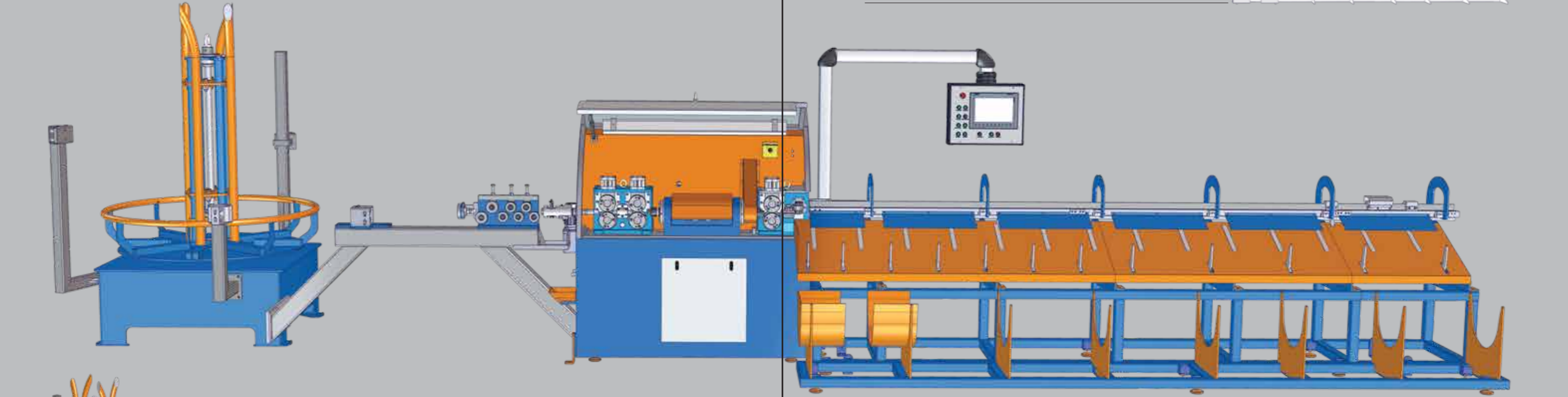
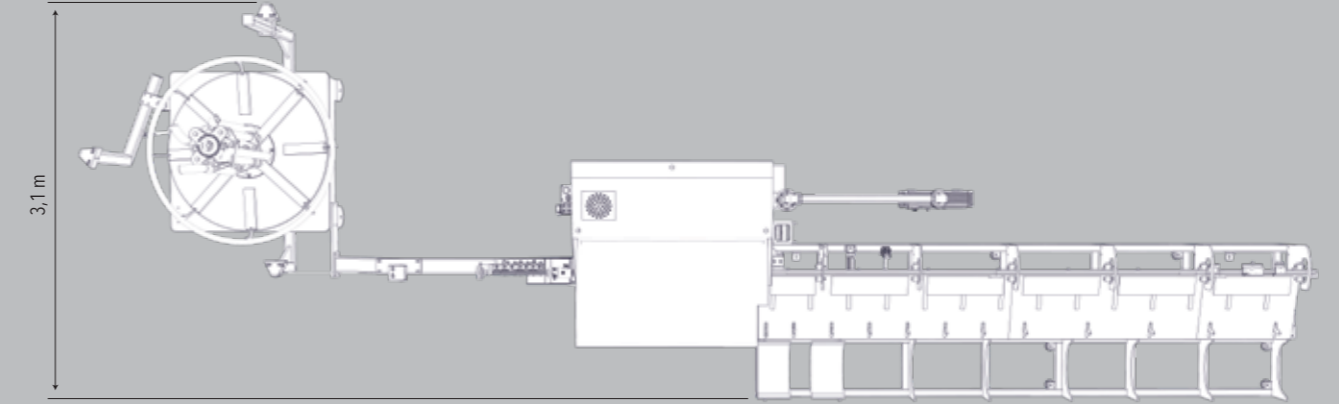
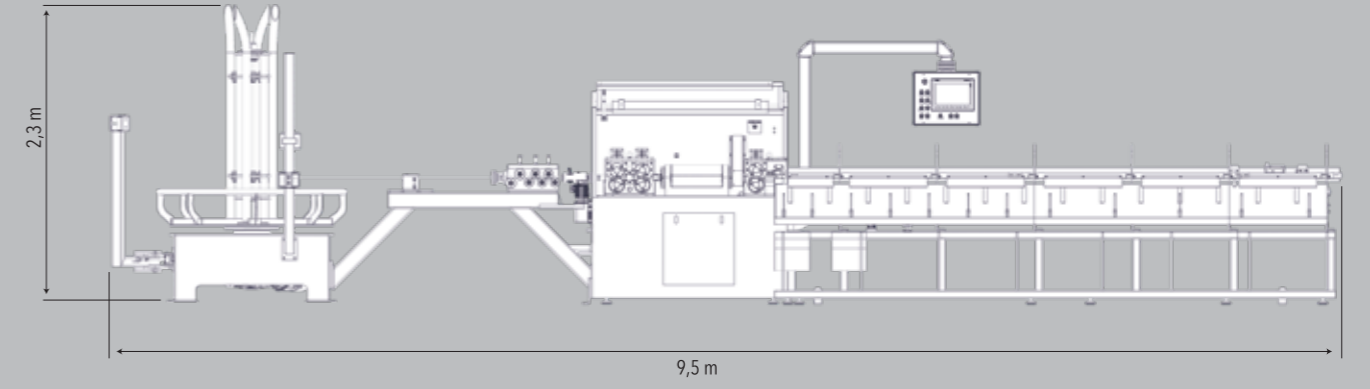


Panel Tel Çit / Wire Fence

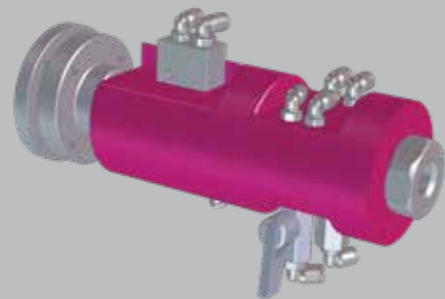
KCM 200 - 38000

MAKİNA TEKNİK VERİLERİ / MACHINE TECHNICAL DETAILS

Makina Hızı / <i>Machine Speed</i>	= 120 m/dk (m/m)
Tel Çapları / <i>Wire Diameters</i>	= Ø3 mm - Ø7mm
Kesilen Tel Uzunluğu / <i>The Length Of The Cut Wire</i>	= 200mm - 4000mm
Toplam Güç / <i>Total Power</i>	= 28 kW
Makina Ağırlığı / <i>Machine Weight</i>	= 4000 Kg



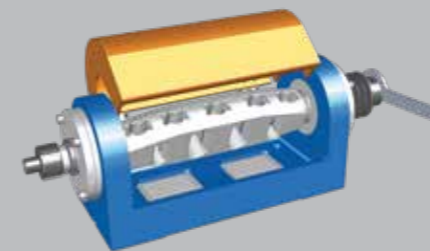
KCM 24001 - AÇICI
KCM 24001 - Uncoiler



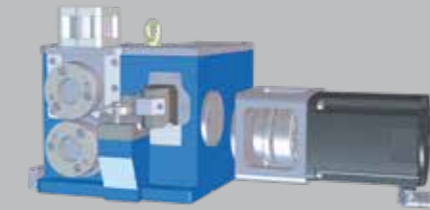
KCM 46001 - OTOMATİK TEL YAĞLAMA
KCM 46001 - Automatic Wire Lubrication



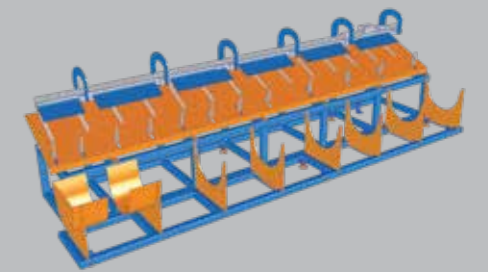
KCM 30007 - İTİCİ ŞANZUMAN
KCM 30007 - Propelling Transmission



KCM 20005 - FIRDÖNDÜ
KCM 20005 - Swivel



KCM 30008 - BALTALI KESME (Servo Sistemli)
KCM 30008 - Ax Cutting (With Servo System)



KCM 26001 - İSTİFLEME
KCM 26001 - Stacking