

Powerful and Versatile Performance C-Arm

OSCAR series



OSCAR

series

Driven by a passion for X-ray technology, Genoray is committed to leading a healthy lifestyle by constantly improving our products.

Global Healthcare,
Endless Innovation,
A Better World.

Genoray is dedicated to health and happiness.



OSCAR 15 | 15FD

Exceptional, All-round FPD C-Arm

- 15kW HFG
- Flat Panel Detector (30x30cm, a-Si), (26x26cm, CMOS)
- Wide FOV, Low Noise
- 150° Wide Orbital Rotation
- Rotating Anode
- DSA (Angiography, Road Map, Post Processing)



OSCAR 15i | 15iL

Advanced, Image Intensifier C-Arm

- 15kW HFG
- Image Intensifier (9" / 12")
- Wide FOV, Low Noise
- Rotating Anode
- 135° Wide Orbital Rotation
- DSA (Angiography, Road Map, Post Processing)



OSCAR prime

Versatile, Convenient FPD C-Arm

- 5.3kW HFG / 4.5 kW HFG
- Flat Panel Detector (26x26cm, CMOS), (23x23cm, a-Si)
- Active Air Cooling System
- Wide FOV, Low Noise
- 180° Wide Orbital Rotation
- DSA (Angiography, Road Map, Post Processing)



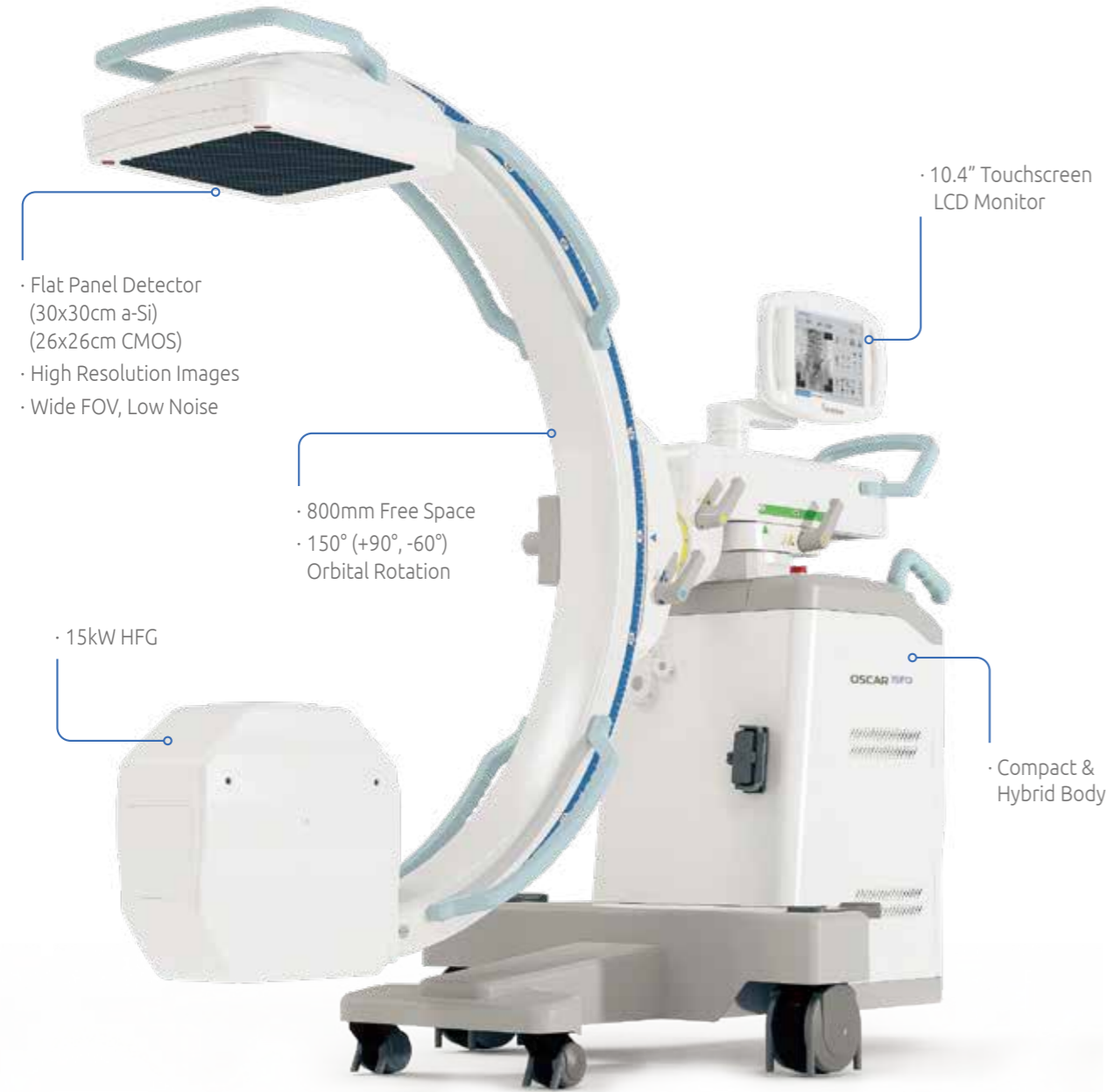
OSCAR classic

Classical, Well-balanced I.I. C-Arm

- 5.3kW HFG / 4.5kW HFG
- 9" Image Intensifier
- Active Air Cooling System
- Wide FOV, Low Noise
- 150° Wide Orbital Rotation
- DSA (Angiography, Road Map, Post Processing)

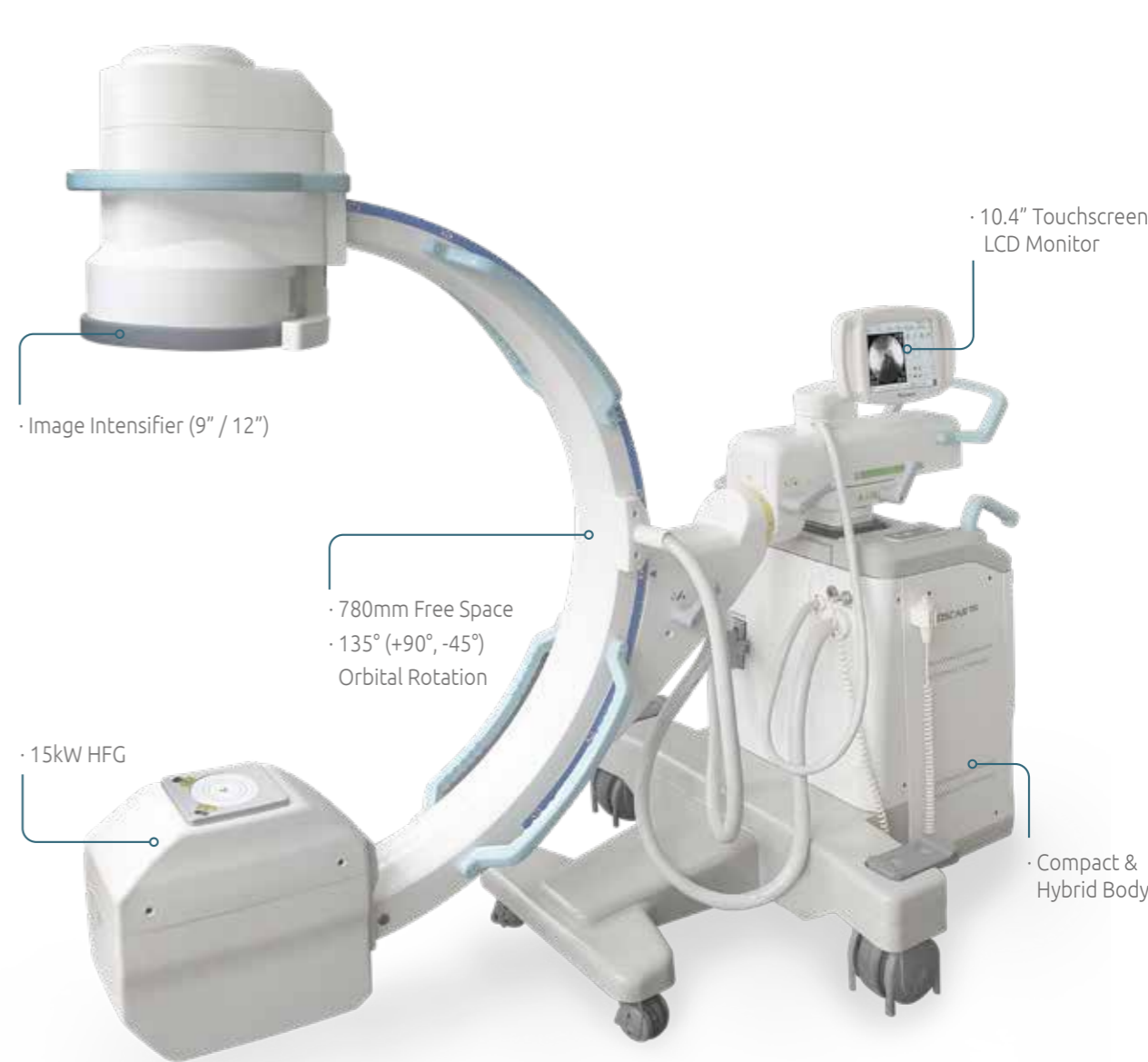
OSCAR 15 | 15FD

The OSCAR 15FD fulfills various operational needs with exceptional images produced by Flat Panel Detector technology. It is a culmination of decades worth of developmental experience at Genoray.



OSCAR 15i | 15iL

The OSCAR 15i provides superior images, surpassing conventional equipment. For a larger desired FOV, Genoray also presents a 12" I.I., which enhances larger pristine images.



Flat Panel

- 26x26cm CMOS *OSCAR 15
- 30x30cm a-Si *OSCAR 15FD

HFG

- 15kW HFG

DSA

- Angiography
- Road Map
- Post Processing

Image Intensifier

- 9" *OSCAR 15i
- 12" *OSCAR 15iL

HFG

- 15kW HFG

DSA

- Angiography
- Road Map
- Post Processing

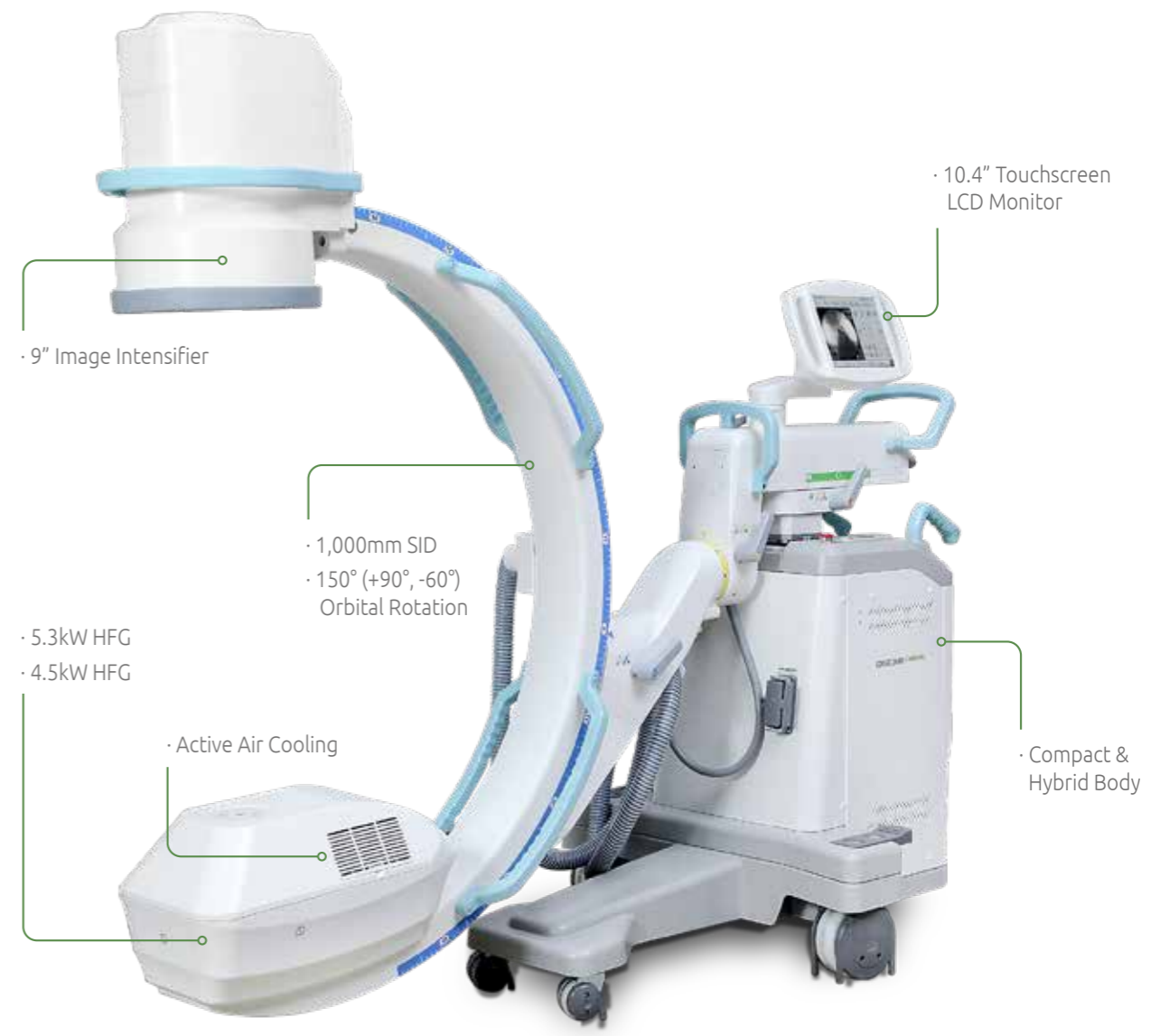
OSCAR prime

The OSCAR Prime is a unique system which possesses a 180-degree orbital rotation for maximizing the operational environment. Utilizing Genoray's self-developed CMOS detector, the OSCAR Prime will produce sharp, high-quality images.



OSCAR classic

The Oscar Classic is a highly popular system globally, equipped with a reliable output to consistently produce high quality images.



Flat Panel

- 26x26cm CMOS
- 23x23cm a-Si

Wide Orbital Rotation

- 180° (+90°, -90°)

HFG

- 5.3kW
- 4.5kW

Image Intensifier

- 9"

HFG

- 5.3kW
- 4.5kW

Active Air Cooling System

- To prevent overheating
- To offer longer operating time / duration

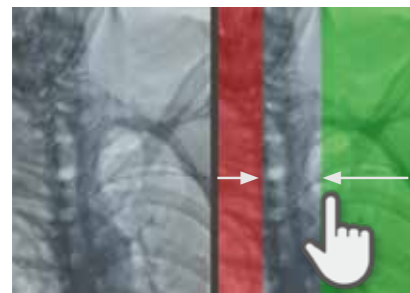
OSCAR series

Features

X-ray Dose Management

Virtual Collimation

A virtual collimator allows for the selection of a desired field of view, while reducing the amount of radiation exposure.



Dose Structured Report

The Dose SR allows for an efficient radiological workflow, improves patient care and enhances working conditions.

Auto Collimation

Prevention of unnecessary X-ray exposure by focusing on the area of interest while automatically collimating the surrounding areas.



Image Processing

Edge Enhancement

The edges are enhanced for a more accurate diagnosis



Motion Correction

Detects movement and reduces the blur on the image after exposure.



Metal Correction

To prevent over radiation or low quality images interrupted by metal.



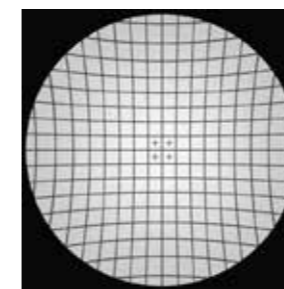
Flat Panel Detector

The CMOS detector, crafted with years of professional experience and core technology, achieves high-definition video images without distortion and provides exceptional images with low noise through minimal x-ray exposure.

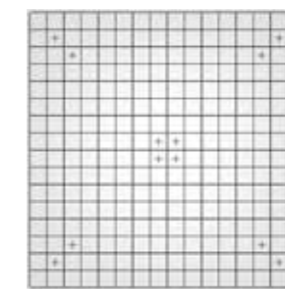


Exceptional Image Quality

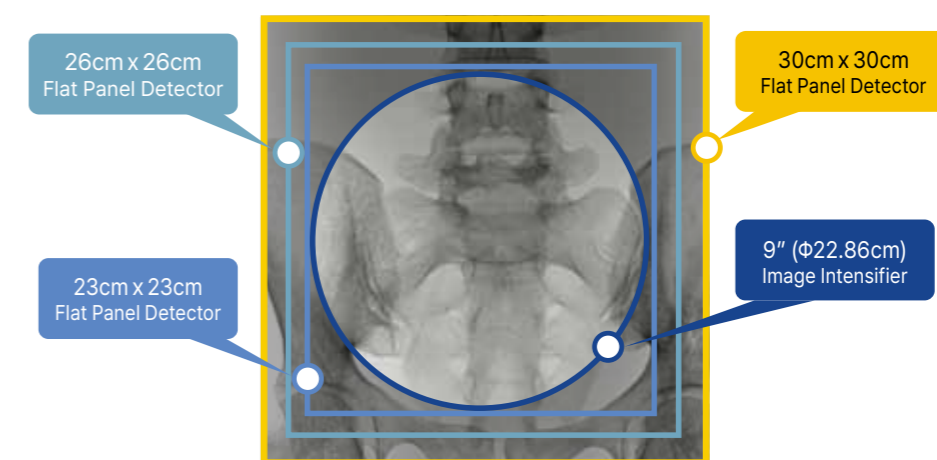
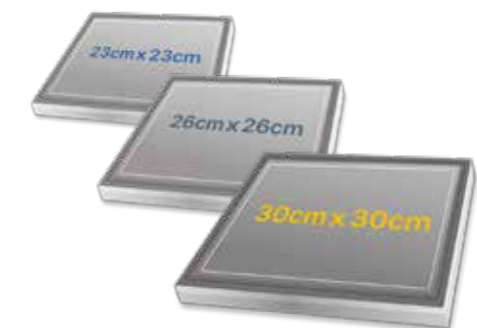
Equipped With an optimal flat panel detector size, 30x30cm, it acquires pristine images with high quality resolution to accurately diagnose all types of procedures.



<Image Intensifier>



<FPD>



* Covers a wider area compared to conventional 9" Image Intensifier

Clinical Data

Providing excellent diagnostic images through accumulated experience



Pain Management Case



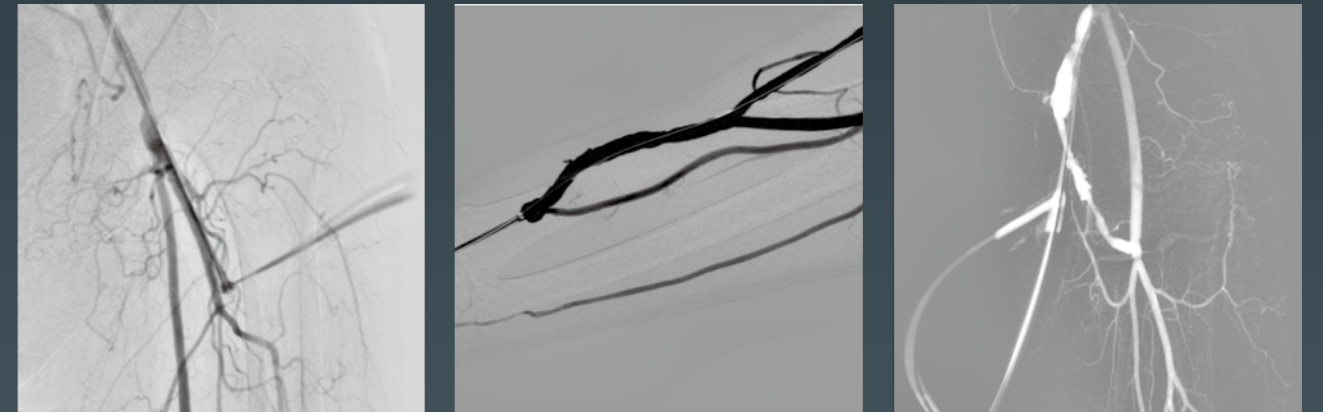
Orthopedics Case



Trauma Case

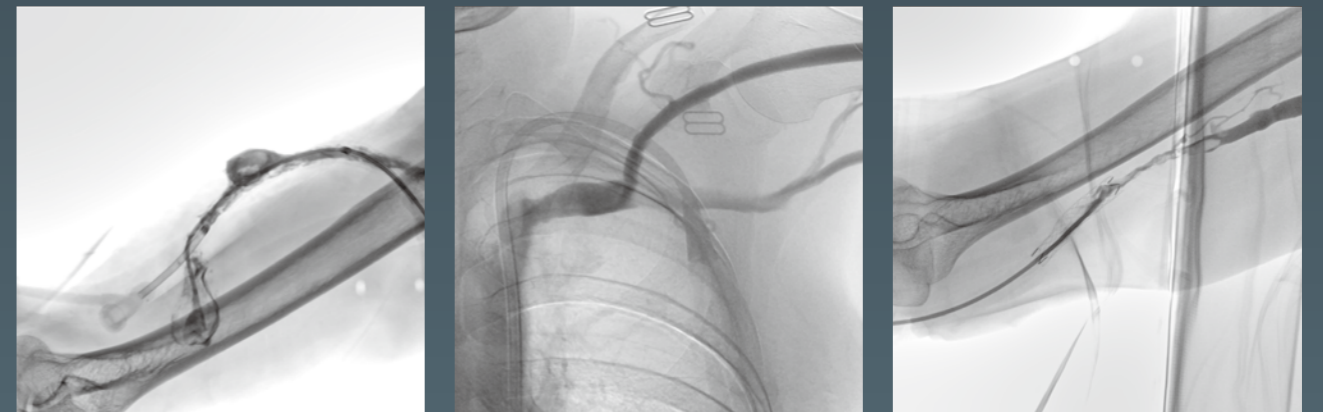
DSA (Digital Subtraction Angiography)

DSA is a multifunctional tool utilized in both diagnostics and surgical procedures which may serve a wide variety of applications.



DSA Image

Roadmap Image



Live Image with Contrast Medium Injected

Applications

- General Surgery
- Pain Management
- Neuro & Spine Surgery
- Orthopedic Surgery
- Trauma Procedure
- Urology Procedure
- Cardiac Surgery
- Peripheral Artery Diseases
- Vascular Surgery



GENORAY Co.,Ltd.

T +82-31-5178-5500
E genoray@genoray.com
W www.genoray.com

GENORAY America Inc.

T +1-855-436-6729
E inquiry@genorayamerica.com
W www.genorayamerica.com

GENORAY EU GmbH

T +49-30-50969498
E info@genorayeuropa.com
W europe.genoray.com

GENORAY Japan

T +81-45-620-4971
E Info@genorayjapan.co.jp
W www.genorayjapan.co.jp

GENORAY Türkiye

T +90-216-463-57-37
+90-216-463-57-53
E genorayturkiye@genoray.com

GENORAY Shanghai

T +86-021-6785-8538
W www.genoray.com.cn



* This X-ray unit may be dangerous to patient and operator unless safe exposure factors and operating instructions are observed.

© GENORAY CO.,LTD.
Ver.OS-241104-Rev_01_USA