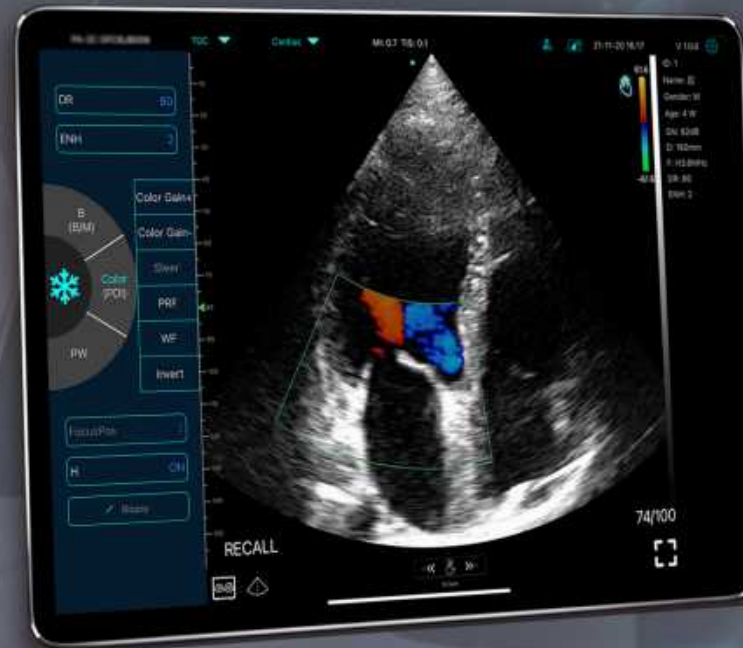


# WiFi&USB 3 in 1 Color Ultrasound

One probe with whole body presets

*Phased array probe*

*Linear array probe*



C10XL PRO



*Dual head color Doppler*

# PROBE SPECS

## Linear array probe

Freq: 7.5/10MHz  
Depth: 20-100mm  
Footprint: L25mm

## Phased array probe

Freq: 2.2/3.6MHz  
Depth: 90-190mm 90-240mm  
Footprint: 25mmx16mm  
Scan angle: 80°

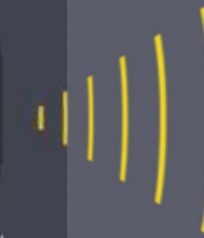
Linear

~25mm



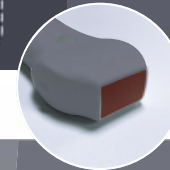
130mm  
N.W:136g

Phased



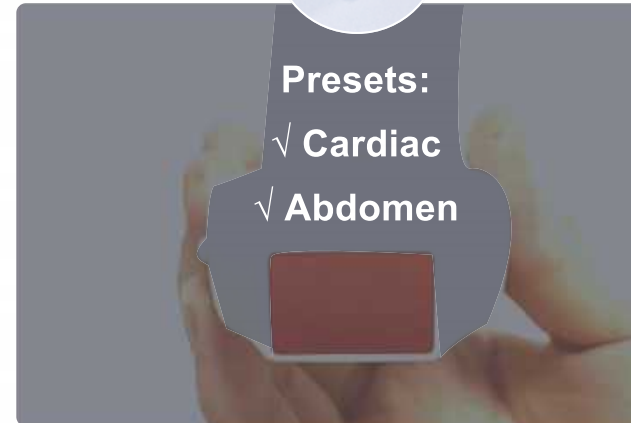
Presets:

- ✓ Thyroid
- ✓ Smallparts
- ✓ Pediatrics
- ✓ Vascular
- ✓ VesselFlow
- ✓ Carotid
- ✓ Breast
- ✓ MSK
- ✓ Nerve



Presets:

- ✓ Cardiac
- ✓ Abdomen



USB&Wi-Fi 3 in 1 probe

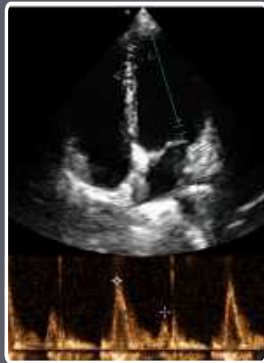
can be connected to a Windows/Android/IOS device (Tablet, smart phone, PC etc) via WiFi or USB cable. The probe can be used while charging. You can scan anybody anytime anywhere conveniently, such as a clinic, hospital ward, emergency room, or operating theater.

# Clinical Image

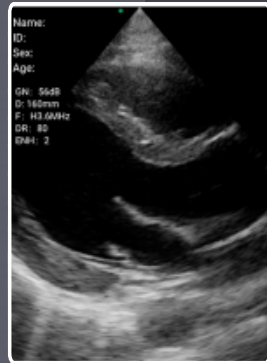
Care for your overall health  
More doctors can own ultrasound



## Phased probe



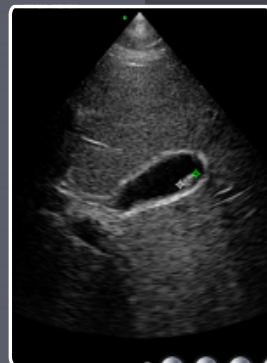
B+PW Cardiac



B Cardiac

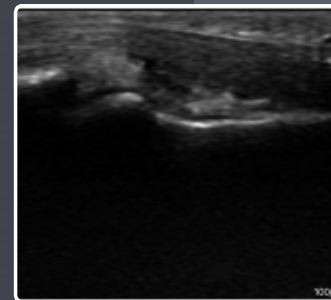


B+Color+PW Cardiac

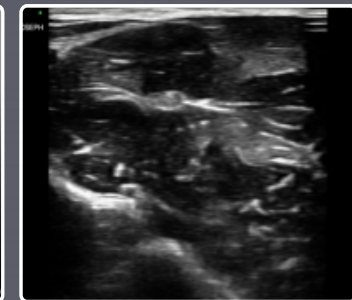


B Gallbladder

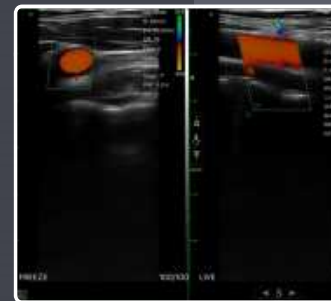
## Linear probe



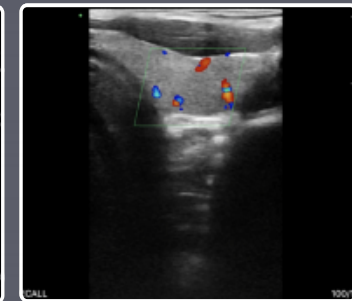
B MSK



B Nerve



B+Color Artery



B+Color Thyroid

# Software Specs

- 8 TGC
- 17 Presets
- 15 Body Mark
- Dual Screen display

## MY USG APP



- ✓ Support Dicom
- ✓ Report edit/print
- ✓ Free app & updates, Unlimited users
- ✓ Horizontal&Vertical Screen display

### Measure Magnify

The boundary of the target area can be marked more accurately.



### Save&share image/video/report

Easy to manage patient information



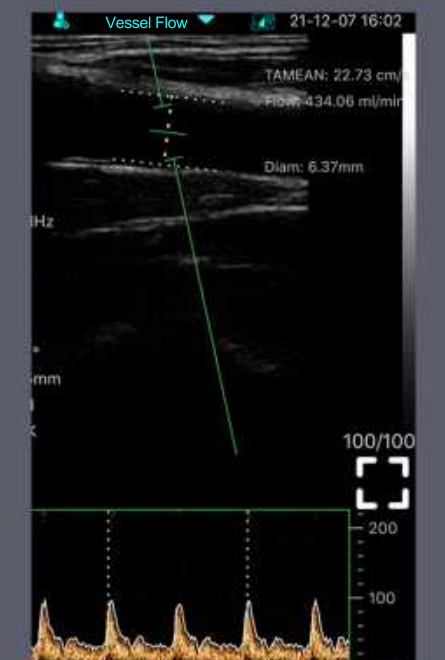
### Full screen display

More concise interface



### Auto vessel flow measure

Auto measure TAMEAN. Flow. Diam



Download "MY USG"

from App Store / Google Play



## Compatibility

- ✓ IOS 11.0 or later:  
iphone7(plus) ~ iphone13 series or later  
ipad Air2 ~ipad mini 5~ipad Pro series or later
- ✓ Android 10 or later
- ✓ Windows 10 version PC

## Common Specs

Scanning mode: Electronic array

Probe element: 128

Connection: USB, WiFi

Display mode:

B, B/M, Color, PW, PDI, B+Color+PW

Measure:

B: Length,Area/Circumference,Angle,Trace,Distance  
GA(CRL,BPD,GS,FL,HC,AC), EFW(BPD,FL)

B+M: Heart Rate, Time, LVIDd, LVIDs, SV, EF, Distance

B+PW:Velocity, Heart Rate(2), S/D, Depth

Auto vessel flow measure: TAMEAN, Flow, Diam

Image frame rate: 24/s

Cine play: 100/200/500/1000, Auto play, Manual play

Image save: jpg, avi, Mp4 and DICOM format

WiFi type: Built-in WiFi, 802.11g/20MHz/5G/450Mbps

Working system: Apple iOS and Android, Windows

Language: English,Russian,Italian,Spanish,Chinese, French,  
Portuguese(Brazil)

Battery: built-in 2800mAh Lithium battery

Power: consumption 4W (probe run) /1.5W (probe stop)

Battery last: 3 hours(working time), More than 5 hours(stand  
by time)

Battery charge: by USB cable / wireless charge