

# CARRY107

## FAST, SAFE, TIRELESS

The Carry 107 mini-dumper is the ideal solution to transport and handle various types of materials on the worksite and in difficult to access locations.



The self-loading shovel can transfer all sorts of material, such as rubble, earth, and aggregate, into the skip quickly and safely, with minimum operator effort



### ENGINE OPTIONS

The Carry107 is equipped with a Honda 6.3 or 8.7 kW petrol engine with recoil or electric start. There is also the option of a Yanmar 7.4 kW diesel engine, with electric start, for reduced fuel consumption and longer operating periods between refuelling stops. The Carry107 is equipped as standard with a hydraulic power take-off providing a flow rate of 14 litres/min. It can be used to use hydraulic tools and accessories like the concrete mixer kit. The engine is completely protected and enclosed between fixed side panels and a removable front bonnet.

### TACKLES ANY SLOPE

Thanks to the large undercarriage, the large driving sprocket and 4 track rollers per side, the Carry107 is completely at ease on any terrain, including tough slopes, steps and ramps. Two travel speeds ensure maximum operating efficiency even on very large sites.



## SAFETY AND STANDARDS

All the engines have reduced noise emissions. The engine is mounted on vibration dampers to significantly reduce the amount of vibrations transmitted. Integral bonnet panels prevent accidental contact with hot engine parts.

### DESIGNED WITH THE OPERATOR IN MIND

The steering handle is mounted on dampers to reduce the vibration transmitted to the arms and upper body, ensuring total operator comfort. Even the structure of the spring-damping footplate prevents vibrations from being transmitted to the body. The footplate conveniently folds out of the way when the machine is operated from the ground to prevent accidental contact with the operator's legs. When the machine is driven with the operator on board, the footplate is automatically locked in the open position to protect it from being closed accidentally.

### OPERATOR COMFORT

The reduced noise level enhances operator comfort and makes the machine suitable for use even in urban centres.

### HONDA HOUR METER/REV COUNTER KIT

Easily installed, this kit enables the operator to view the engine rpm when the engine is running. When the engine is stopped, the hour meter is displayed.



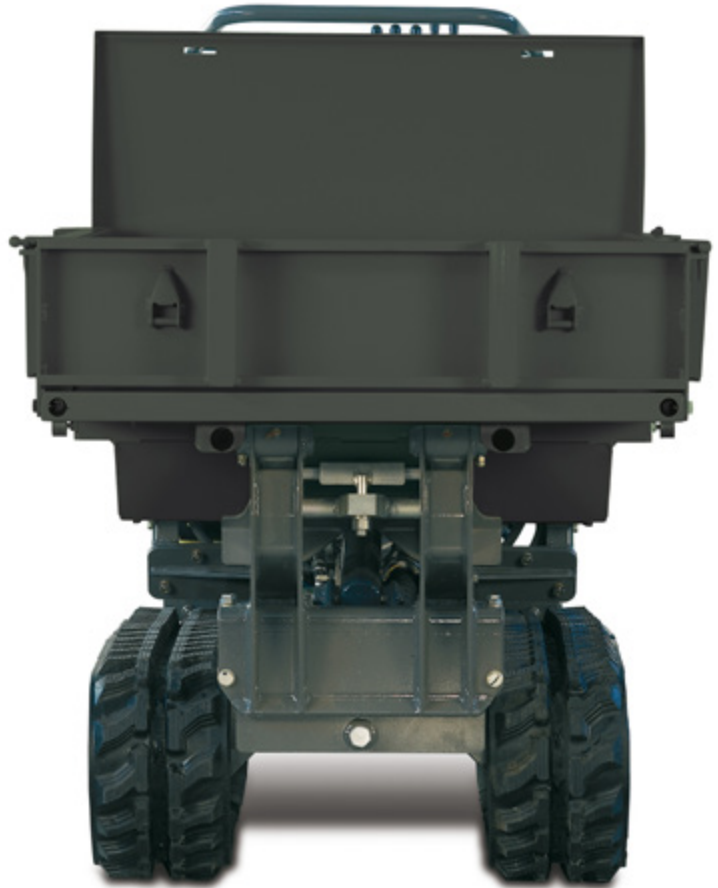
## A VERSATILE MACHINE FOR ALL TYPES OF USE

The Carry107 can be equipped with a wide range of accessories to meet various requirements: skip for construction, self-loading shovel, bed with opening sides, concrete mixer kit and levelling blade. The equipment coupling/uncoupling system is quick and simple.



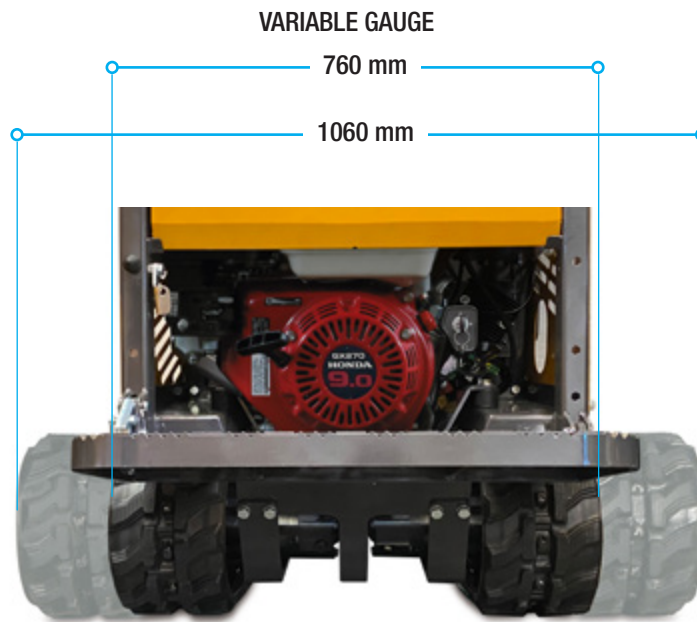
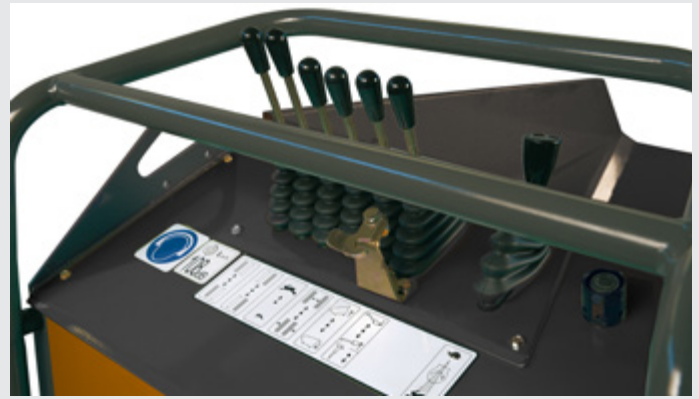
## OPENING SIDES

The version with a bed  
has a surface of  
1240 x 1290 mm



## SIMPLE, INTUITIVE CONTROLS

The control console is simple and intuitive. The control lever protection bar is a convenient armrest for the operator, while the control levers are connected directly to the control valve to ensure an accurate, progressive response.



## TECHNICAL FEATURES

<b>Engine options</b>	Honda GX270 petrol (6.3 kW / 3600 rpm) Honda GX270-AE petrol (6.3 kW / 3600 rpm) Honda GX390-AE petrol (8.7 kW / 3600 rpm) Yanmar L100V6-AE diesel (6.8 kW / 3600 rpm)
<b>Machine weight with skip</b>	495 kg (petrol)
<b>Machine weight with skip and shovel</b>	560 kg (petrol)
<b>Machine weight with concrete mixer</b>	550 kg (petrol)
<b>Machine weight with concrete mixer and shovel</b>	600 kg (petrol)
<b>Machine weight with bed with opening sides</b>	510 kg (petrol)
<b>Operating load</b>	700 kg
<b>Speed</b>	2.3 / 3.2 km / h
<b>Gauge (hydraulic variable gauge)</b>	760 / 1060 mm
<b>Skip capacity</b>	0.33 m <sup>3</sup>
<b>Max allowed slope when empty</b> (guide with operator on the ground, where applicable)	20° - 36% (variable based on the configuration)
<b>Max allowed slope when loaded</b> (guide with operator on the ground, where applicable)	11° - 20% (variable based on the configuration)
<b>Concrete mixer kit volume</b>	250 / 190 L (total / yield)
<b>Bed with opening sides dimensions</b>	990 x 790 x 200 / 1240 x 1290 mm (closed sides / open sides)
<b>Blade features</b>	1250 mm / 30° (width / angle)
<b>Applicable tools (Hi-Flow version)</b>	demolition hammer, hydraulic drill, dirty water pump