

Background

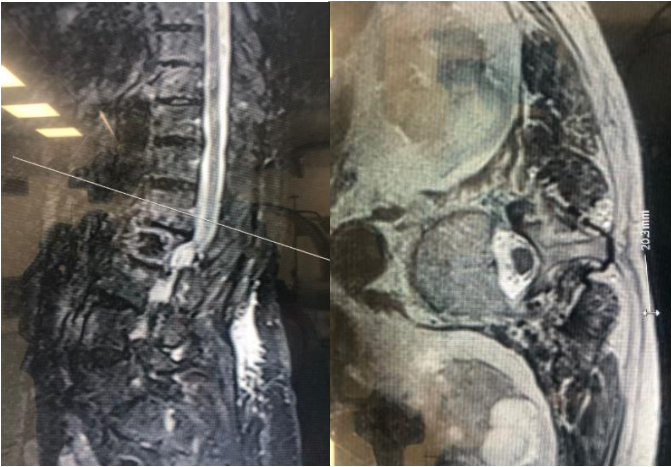
Female, 83 years old.

There are osteophytic degenerative changes in the vertebral corpus corners and unsignaled areas of the therapeutic material in the L2 vertebral corpus, which may be due to previous surgery. It was decided to apply the Powerbone Bone Cement LV20.

Case performed by Doç. Dr. Ülkün Ünlü Ünsal

CASE STUDY

1. Initial radiological view.



2. Imaging of the defect in the spine at the beginning of the operation.



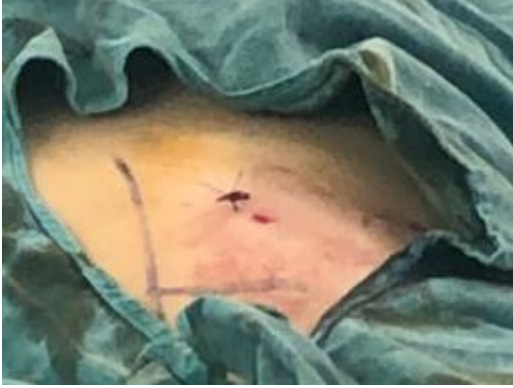
3. The Powerbone Bone Cement LV20 preparation process has been completed and the Bone Cement Applicator Kit, which is a Bone Filler and Pusher Cannulated Screw, has been filled for application.



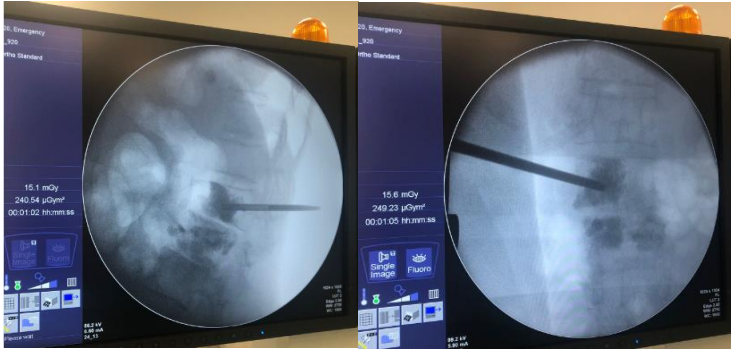
4. Bone Filler and Pusher Cannulated Screw waiting in the prepared state are prepared to be applied to the defect area. With the application of Bone Cement, the change in imaging is observed.



5. After the implantation, the patient is closed.



6. Final radiological imaging.



**BONEGRAFT BİYOLOJİK MALZEMELER SAN. VE
TİC. A.Ş.**

Erzene Mahallesi Ankara Cad. No:172/67
Ege Üniversitesi Sit İdege Teknoloji
Geliştirme Bölgesi BORNOVA / İZMİR /
TÜRKİYE

www.bonegraft.com.tr/ •
info@bonegraft.com.tr