



# FLEXMELT™ SERIES

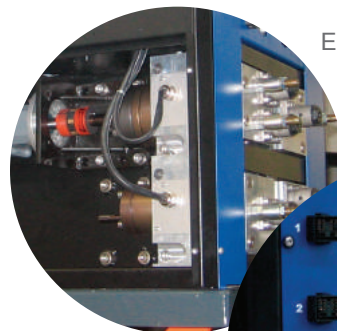
## Adhesive Melters: 4, 8, 14, 30, 50 and 100 liters

Valco Melton's FlexMelt™ Series includes a complete range of hot melt tanks designed for the most demanding applications. All FlexMelt Series Units feature an intuitive MFC (Multi-Function Controller) for fast and easy configuration changes. This totally integrated control provides 'key-to-line' capabilities from one single, user-friendly screen.

- Utilize up to 2 gear pumps dual or single stream for 8, 14 and 100 liter units
- Manage up to 4 gear pumps dual or single stream with 30 and 50 liter units
- Support any pump combination
- Simplify programming tasks with an easy-to-use, but sophisticated Multi-Function Control with integrated variable speed pump control and intuitive, language-free interface based icons



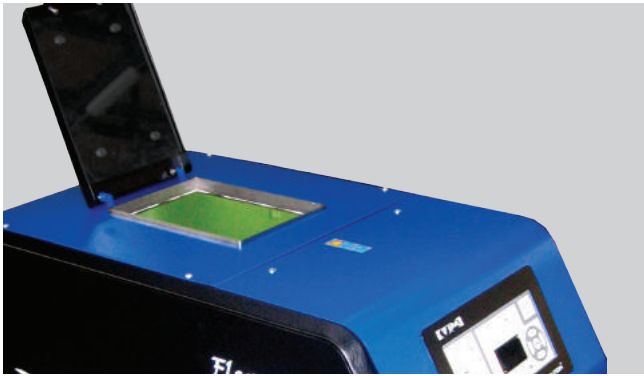
Variable speed AC motor and gear pumps are in all FlexMelt units. These units are controlled through an intuitive multi-function control and support any pump combination without complicated job programming.



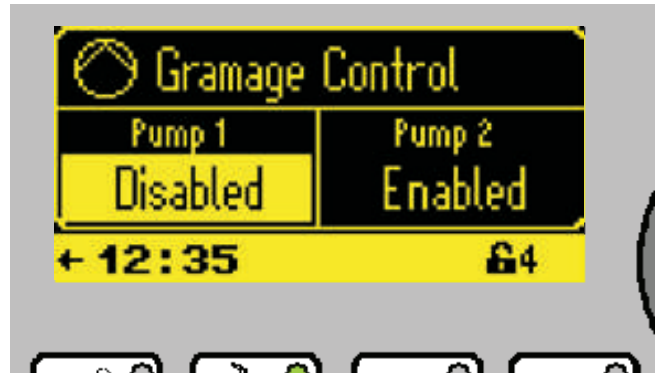
Easy access to pump manifolds



Up to 8 hose and gun connections



Ensure a reliable operation, minimize downtime and help reduce char buildup, while simplifying maintenance with our Teflon® coated tanks.



The integrated grammage control is accessible through Valco Melton's user-friendly multi-function controller. Simplify your operator's programming tasks and virtually eliminate waste and downtime associated with incorrect adjustment of the coat weight. This leads to important adhesive savings and ensures a consistent, defect-free product.

Unit Characteristics	FlexMelt Series Units					
System	FM4	FM8	FM14	FM30	FM50	FM100
Tank Capacity	4L	8L	14L	30L	50L	100L
Melting Capacity	4.9Kg/h	6.5Kg/h	12Kg/h	18Kg/h	32Kg/h	65Kg/h
Max. Pumping Capacity per Pump	Single stream: 0.45 - 8 cc	Single stream: 0.45 - 8 cc /Dual stream: 2x 0.2 - 4.8 cc				Single stream: 15 - 30 cc
Max. Number of Pumps	Up to 1	Up to 2		Up to 4		Up to 2
Electrical Connection	230 Δ + PE or 400 Y + PE					
Max. Working Viscosity	50000 cps					
Max. Working Hydraulic Pressure	80 bar					
Electrical Consumption (unit)	2000W	2900W	4100W	4100W	7300W	12100W
Electrical Consumption (pump & manifold)	1280W	1280W	1280W	1280W	1280W	3250W

	6 Output Electronic Board			8 Output Electronic Board			
Max. Channel Power	Channel 1/ Channel 2	Channel 3/ Channel 4	Channel 5/ Channel 6	Channel 1/ Channel 2	Channel 3/ Channel 4	Channel 5/ Channel 6	Channel 7/ Channel 8
Per Channel (Hose and Gun)	1.800W	1.450W	1.450W	1.800W	1.450W	4.600W	4.600W



For more information, visit [valcomelton.com](http://valcomelton.com) or contact your local Valco Melton representative.

World Headquarters: USA, Cincinnati, Ohio (Corporate Offices) • Tel:+1.513.874.6550 • Fax: +1.513.874.3612

Europe Headquarters: Spain, Navarra • Tel:+34.948.321.580 • Fax:+34.948.326.584

Asia Headquarters: China, Xiamen, Fujian • Tel:+86.592.591.7854 • Fax:+86.592.591.7834

[inquiry@valcomelton.com](mailto:inquiry@valcomelton.com) • Serving over 76 Countries Worldwide • [valcomelton.com](http://valcomelton.com)

## D4-E

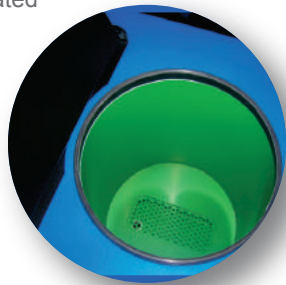
### Gear Pump Hot Melt Unit

The D4-e Unit is ideally suited for a range of packaging, paper converting, graphic arts, non-wovens, and product assembly industries. Specific applications include spray, ribbon coating, direct contact and high-speed jetting adhesive dispensing guns.

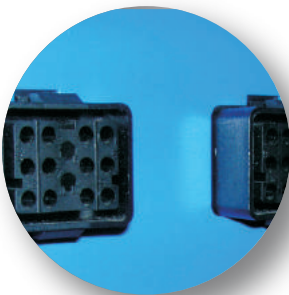
- The D4-e uses a large, reliable 1/4 horsepower motor.
- Large capacity gear pump delivers 60 lbs/hour
- Teflon® coated tanks reduce char buildup for easy maintenance and reliable operation
- Independent, redundant over-temperature circuits and system over-pressure protection provide safe operation
- 100% compatibility with industry standard hoses and guns
- Independent control of each heated zone (up to 5) minimizes adhesive degradation and permits precise uniform patterns
- Compliance with major approval codes worldwide

Solid-state controls, precise RTD temperature sensors, and thermostatic temperature control optimize system performance

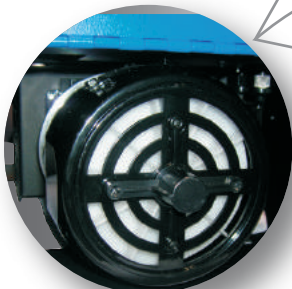
Teflon® coated tanks



Outlets for two hoses and guns allows for user flexibility

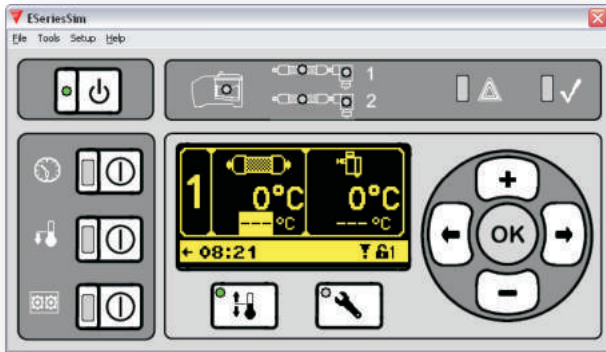


Positive displacement, motor-driven gear pump offers a continuous pulse free output.



D4-e units feature one mechanical relief valve or optional pneumatic relief valve.





D4-e Units feature easy-to-use touchpads with bright LCD screens to allow operators to quickly setup system parameters and monitor system operation without the need to learn any confusing codes.

#### D4-e System touchpad PID controller features:

- graphical display/interface
- programmable sequential zone start-up
- automatic temperature setback
- high/low temperature protection
- Fahrenheit or Celsius option
- system diagnostics
- seven-day programmable clock
- two user selectable inputs and one selectable output
- password protection for setup configuration

## Technical Specifications

### D4-e Characteristics

<b>Tank Capacity:</b>	4.0 kg
<b>Melt Rate:</b>	5.0 kg/hr (11.1 lbs/hr)
<b>Motor:</b>	1/4 HP Fixed Speed AC
<b>Pump Rate:</b>	27 kg/hr (60 lb/hr)
<b>Temp. Range:</b>	30-230°C
<b>Temp. Stability</b>	0.5°C
<b>Electrical:</b>	110/120 VAC or 200/240 VAC 20 AMP single phase with ground
<b>Weight: (empty)</b>	34.0 kg (75.0 lbs)
<b>Dimensions (WxHxD):</b>	312 mm x 424 mm x 607 mm (12.3 in x 16.7 in x 23.9 in)
<b>Gun Attachments:</b>	2



For more information, visit [valcomelton.com](http://valcomelton.com) or contact your local Valco Melton representative.

World Headquarters: USA, Cincinnati, Ohio (Corporate Offices) • Tel:+1.513.874.6550 • Fax: +1.513.874.3612

Europe Headquarters: Spain, Navarra • Tel:+34.948.321.580 • Fax:+34.948.326.584

Asia Headquarters: China, Xiamen, Fujian • Tel:+86.592.591.7854 • Fax:+86.592.591.7834

info@valcomelton.com • Serving over 76 Countries Worldwide • valcomelton.com