

GlucoDr. auto™ A

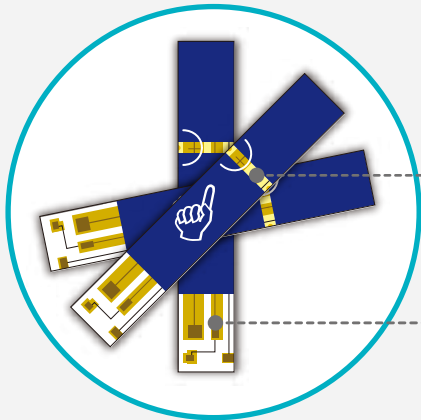
Blood Glucose Monitoring System



All New ISO Compliance!!
ISO 15197:2013 (EN ISO 15197:2015)

Easier than Ever !

AGM-4000 STRIP



Glucose Dehydrogenase (GDH-FAD)

Gold Electrode



AGM-4000

User-friendly meter that automatically codes itself. Targeting both individuals and professionals.

- Accurate and fast result.
- Easy to use.
- Hygiene control.
- Larger memory capacity(500 memory)



Auto-Coding



Release Button



5 Seconds



LinkDr. 2.0



Micro Sample

Manufactured by

allmedicus Co., Ltd.

#7102~7107, #7402, #7403, #7406, 140, Beolmal-ro, Dongan-gu, Anyang-si, Gyeonggi-do 14057 REPUBLIC OF KOREA
TEL. +82.31.425.8288 | FAX. +82.31.422.8589 | www.allmedicus.com

GlucO^{Dr}.™

AGM-4000

User-friendly meter that automatically codes itself
Eject button allows hygiene control for professionals
and also this meter stores up to 500 memories.
This meter targets both individuals and professionals.



43A02 11/2016

AGM-4000

GlucO^{Dr}.*auto*™ *A*



Glucose dehydrogenase (GDH-FAD)

Accurate than ever.

GlucO^{Dr} biosensor uses enzyme that is not affected by oxygen. Maltose free. This allows use of all three types of blood-capillary, venous blood-for glucose measurement.



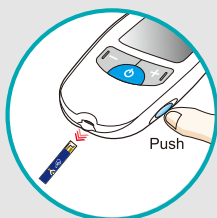
Gold electrode

World's first noble metal(GOLD) biosensor.
Patented technology of NOBLE METAL electrode.



Autocode

No more manual coding.



Strip Eject Button

Hygiene control is easier than ever.



0.5ul / 5 seconds

Small sample size and quick results!



Link^{Dr}.™ 2.0

Manage diabetes on your PC.