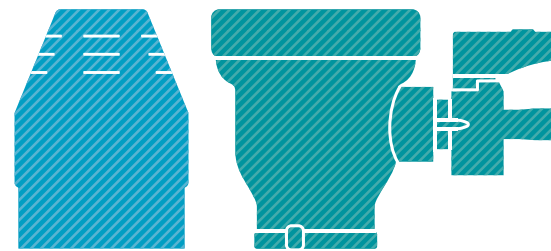
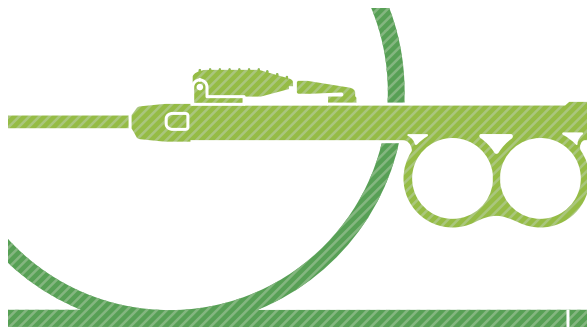




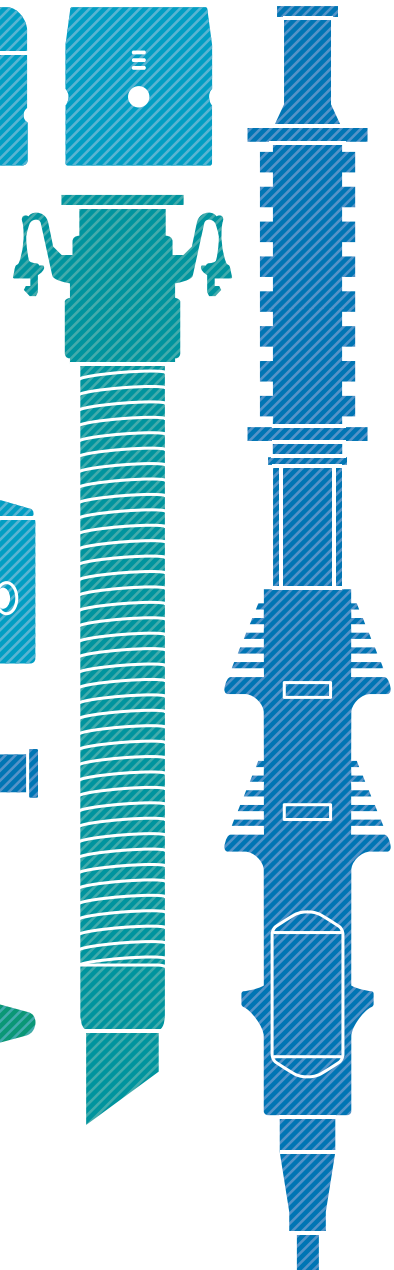
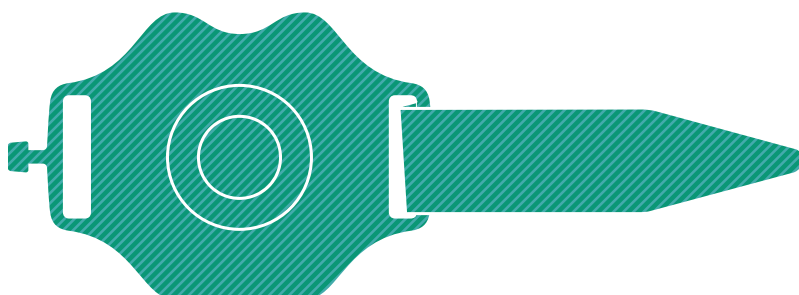
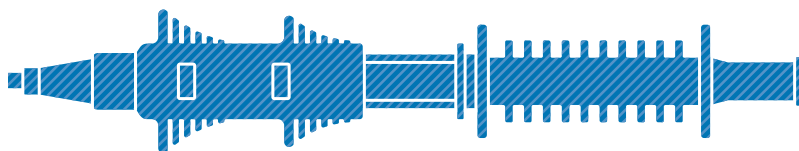
THE TOP IN QUALITY  
for all areas of healthcare

# TOP ENDOSCOPIC RELATED PRODUCTS

---



## TOP ENDOSCOPIC RELATED PRODUCTS



# TOP ENDOSCOPIC NEEDLE

Equipped with a grip designed to enable the user to freely protrude and house the needle



## GRIP

- The grip is designed to enable the user to freely protrude and house the needle.
- With the product type indicated on the front of the grip, the needle diameter, needle protrusion length, needle tip shape, tube length and tube type can be identified easily.
- Provided with an intuitive ON/OFF locking mechanism that allows the locking motion to be transmitted with sound and feel.

## TUBE

The flexible, highly slidable and curl-free tube helps to ensure smooth insertion into the forceps opening.

### LINEUP AND COMPARISON OF INJECTION RESISTANCE PRESSURE VALUES

#### • Standard type [ST]

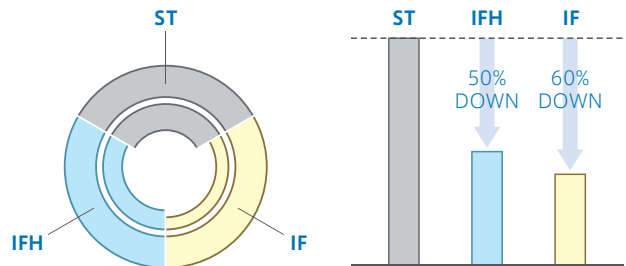
This type is suitable for cases where particularly high flow performance is not required, but a low-viscosity local injection solution is used.

#### • H type (hybrid type) [IFH]

This type has higher operability with the tube's resilience enhanced owing to our unique design while maintaining especially high flow performance. With this type, injection of a high-viscosity local injection solution can be performed smoothly.

#### • High-flow type [IF]

With the highest flow performance, this type enables smooth injection of a high-viscosity local injection solution.



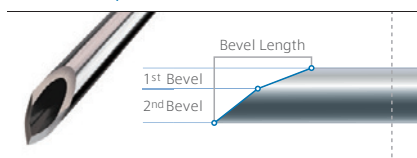
※ The injection resistance and pressure are compared when the needle diameter is 25 G and the tube length is 2200 mm.

## NEEDLE

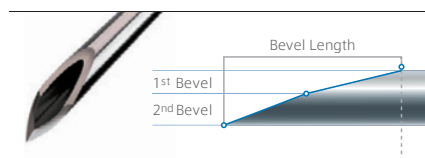
The needle tip is available in three types, and the needle protrusion length is selectable from 3 mm, 4 mm and 5 mm. So, the customer can make a selection according to use.

### LINEUP AND COMPARISON OF NEEDLE SHAPE

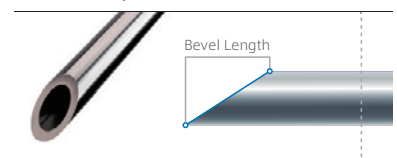
#### SB Blunt Tip



#### RB Sharp Tip



#### FB Blunt Tip (Flat Bevel)



# TOP ENDOSCOPIC NEEDLE

## FOR UPPER DIGESTIVE TRACT

Model	Gauge	Needle type	Needle length	Tube type	Tube length	Volume
23-4 SB 1600-IFH	23G	SB	4mm	IFH	1600mm	2.0mL
23-4 SB 1600-ST		SB	4mm	ST		1.5mL
23-5 RB 1600-ST		RB	5mm	ST		1.5mL
25-4 SB 1600-IFH	25G	SB	4mm	IFH		2.0mL
25-4 SB 1600-IF		SB	4mm	IF		2.2mL
25-3 SB 1600-IFH		SB	3mm	IFH		2.0mL
25-4 RB 1600-IFH		RB	4mm	IFH		2.0mL
25-1.8 SB 1600-ST		SB	1.8mm	ST		1.5mL

## FOR LOWER DIGESTIVE TRACT

Model	Gauge	Needle type	Needle length	Tube type	Tube length	Volume
23-4 SB 2200-IFH	23G	SB	4mm	IFH	2200mm	2.5mL
23-3 SB 2200-IFH		SB	3mm	IFH		2.5mL
23-4 FB 2200-IFH		FB	4mm	IFH		2.5mL
23-4 SB 2200-ST		SB	4mm	ST		1.8mL
23-4 FB 2200-ST		FB	4mm	ST		1.8mL
23-5 RB 2200-ST		RB	5mm	ST		1.8mL
23-2-8 SB 2200-ST		SB	2~8mm	ST		1.5mL
25-3 SB 2200-IFH	25G	SB	3mm	IFH		2.3mL
25-3 SB 2200-IFH		SB	3mm	IFH		2.5mL
25-4 SB 2200-IFH		SB	4mm	IFH		2.5mL
25-4 RB 2200-IFH		RB	4mm	IFH		2.5mL
25-5 RB 2200-IFH		RB	5mm	IFH		2.5mL
25-3 SB 2200-IF		SB	3mm	IF		2.9mL
25-4 SB 2200-IF		SB	4mm	IF		2.9mL
25-1.8 SB 2200-ST		SB	1.8mm	ST	1.8mL	
25-3 ST 2200-ST		SB	3mm	ST	1.8mL	
25-2-8 RB 2200-ST		RB	2~8mm	ST	1.5mL	
26-3 RB 2200-IFH	26G	RB	3mm	IFH	2.5mL	

## THIN DIAMETER

Model	Gauge	Needle type	Needle length	Tube type	Tube length	Volume
23-4 SB 1600-SD	23G	SB	4mm	Thin diameter (O.D.1.9mm)	1600mm	1.4mL
25-4 SB 1600-SD	25G	SB	4mm			1.1mL

## TOP ENDOSCOPIC NEEDLE FOR INK INJECTION

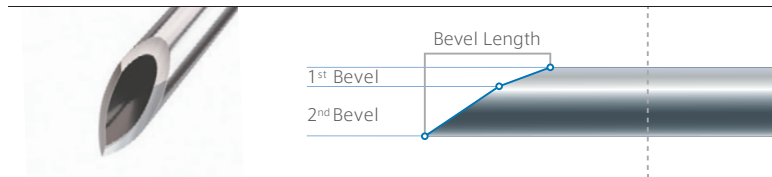
### Debut of a local injection needle specialized for ink injection

- Controls the local injection speed using a 1 mL syringe.
- A priming amount of 0.3mL, which is the smallest among the series products.
- A needle protrusion length of 2.5mm\* that ensures secure local injection in a thin-wall region.

\*Large intestine ink injection – helps to achieve secure and pinpoint local injection in a deep large intestine.

#### NEEDLE TYPE

##### FE Fine Edge



## TOP ENDOSCOPIC NEEDLE FOR THE SMALL INTESTINE

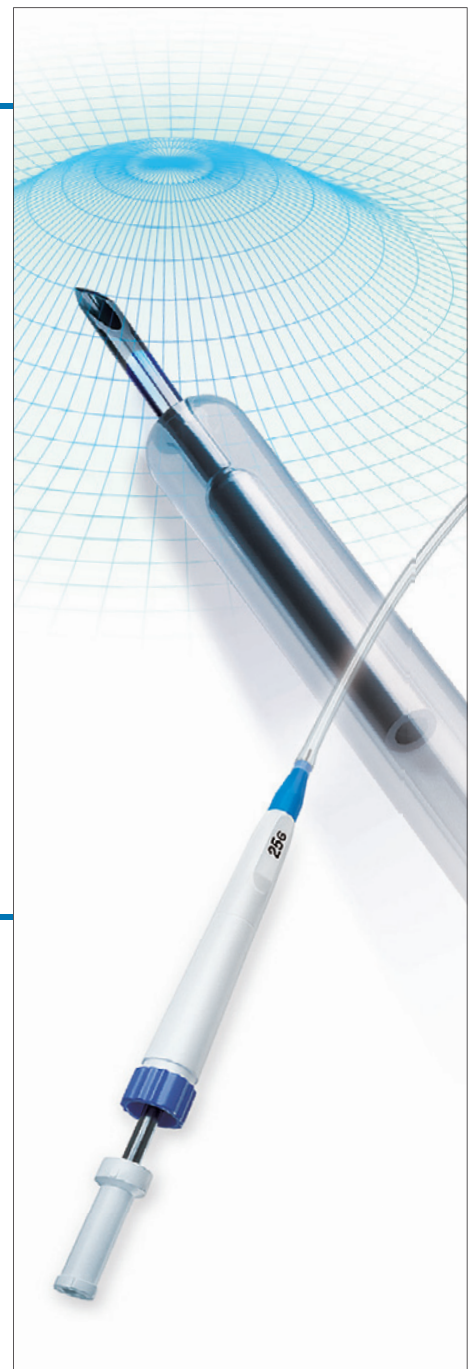
**Outer diameter of the tube : 1.9mm**  
The needle can be inserted into a 2.2mm  
forceps opening easily

##### For small intestine ink injection

- With small-volume design, priming and ink injection can be performed without syringe replacement even in cases where a 1 mL syringe is used.

##### For small intestine local injection

- Smooth local injection is ensured thanks to design with an increased inner diameter of the tube with the outer diameter unchanged.



## FOR MARKING

Model	Gauge	Needle type	Needle length	Tube type	Tube length	Volume
25-2.5 FE 2200 FM	25G	FE	2.5mm	For marking	2200mm	0.3mL
25-3 SB 2200 FM	25G	SB	3mm		2200mm	0.4mL

## SMALL INTESTINE

Model	Gauge	Needle type	Needle length	Tube type	Tube length	Volume
23-3 SB 2600 SI	23G	SB	3mm	Small intestine (O.D.1.9mm)	2600mm	1.4mL
25-3 SB 2600 SI	25G	SB	3mm		2600mm	1.0mL
25-4 SB 2600 ST	25G	SB	4mm	ST	2600mm	1.9mL

# TOP ENDOSCOPIC HOOD

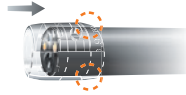
Allows quick natural discharge of a liquid that blocks the visual field

- Fluid in the hood is discharged by capillarity and pressure difference.

## How to use

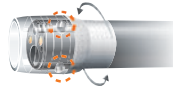
### 1. Mounting direction

- Mount the hood on the scope in the arrow direction. Pay attention to the direction of the hood. The installation side of the hood is thinly built, and the diameter of the compatible scope is indicated there.



### 2. Taping position

- In cases where the installation is loose, such as the hood still moving, secure it with a tape. In doing so, do not block the side opening with the tape.



**\*If lubricating jelly is used for installation, the side opening may be clogged, causing the drainage function to be lowered.**



## STRAIGHT TYPE

Type name	Compliant endoscope O.D.	Drainage function	Packaging unit
SS	8.6~9.8mm	×	5pcs./box
SL	10.6~12.6mm		



## SLIT AND HOLE TYPE

Type name	Compliant endoscope O.D.	Drainage function	Packaging unit
SHS	8.6~9.8mm	○	5pcs./box
SHM	9.8~10.6mm		
SHL	10.6~12.6mm		
SHLL	12.6~14.0mm		



## SLIT AND HOLE F (FOCUS) TYPE

Type name	Compliant endoscope O.D.	Hood protrusion length	Drainage function	Packaging unit
SHF-010	9.0~9.2mm	3.5~7.0mm	○	5pcs./box
SHF-020	9.8mm			
SHF-025	9.8~9.9mm			
SHF-030	9.9~10.5mm			
SHF-035	10.8mm			
SHF-040	11.0~11.3mm			
SHF-045	11.5mm			
SHF-050	11.7~12.2mm			
SHF-055	12.8~13.2mm			
SHF-060	13.2mm			
SHF-070	13.6~13.8mm	1.5~7.0mm	○	5pcs./box
SHF-080	14.8mm			



## SLIT AND HOLE TYPE (BLACK TYPE)

Type name	Compliant endoscope O.D.	Drainage function	Packaging unit
SHM-B	9.8~10.6mm	○	5pcs./box
SHL-B	10.6~12.6mm		
SHLL-B	12.6~14.0mm		



## TOP ENDOSCOPIC HOOD VIEW OPENER

### Counter-traction by the hood in ESD

- As a shape in which counter-traction and a good view are gained in ESD, a flower shape, which is suitable for opening the mucosa while pushing it, is adopted.
- The liquid retained in the hood by slits and holes are naturally discharged by capillary action and a pressure difference.



Model	Drainage function	Compatible endoscope tip outer diameter
Slit and Hole type L	○	9.9~11.0mm

## TOP ENDOSCOPIC HOOD CAST HOOD

### A new approach for digestive tract stenosis – a hood with a scaled small-diameter tip

- Since the tip has scales, the stenosis part can be measured.
- The transparent tip secures a good visual field.

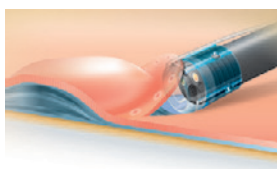


Model	Drainage function	Compatible endoscope tip outer diameter
CAST HOOD	×	10.0mm

## TOP ENDOSCOPIC HOOD MOLE CAP

### Improved insertability of the endoscope and crawling into the submucosa during ESD achieved with a spherical tip

- With the hood tip spherically shaped, improved insertability of the endoscope and crawling into the submucosa during ESD are made possible.
- A drainage function enables quick natural discharge of a liquid that blocks the visual field.
- A type equipped with a water tube is capable of delivering water toward the visual field center direction, and helps perform hemostasis.



Model	Drainage function	Compatible endoscope tip outer diameter
M-01	○	9.9~10.1mm
M-02		10.5~11.8mm
M-03		12.2~12.5mm
M-04		12.8~13.8mm
M-05		14.8~15.2mm
MW-02		10.5~11.8mm
MW-03		12.2~12.5mm
MW-04		12.8~13.8mm
MW-05		14.8~15.2mm

TOP ENDOSCOPIC HOOD  
**SPACE ADJUSTER**

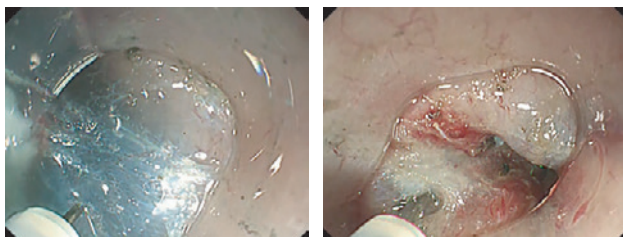
A super-soft hood that crawls into the submucosa according to the gap shape now available

- It can easily crawl into the submucosa in ESD.
- Since the soft body gently contacts the mucosa, the risk of bleeding is reduced.
- The transparent material keeps the operative field clear.
- With a smooth material adopted, the resistance in insertion is reduced.

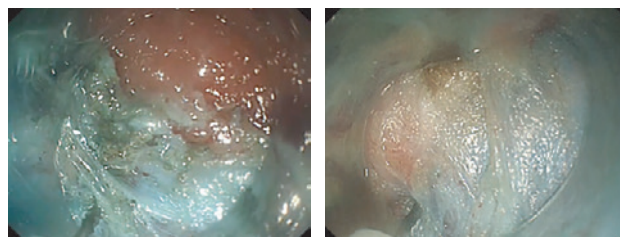


Example of use

Esophagus by ESD



Stomach by ESD

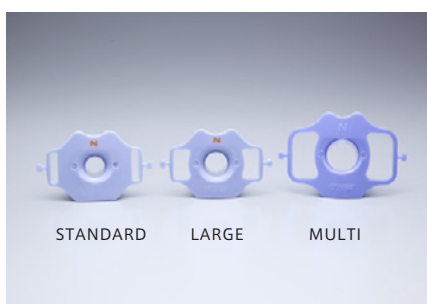
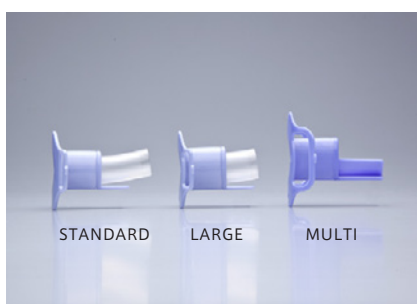


Model	Drainage function	Compatible endoscope tip outer diameter
SPACE ADJUSTER	×	9.6~10.6mm

# TOP ENDOSCOPIC MOUTHPIECE

## A mouthpiece that helps perform comfortable endoscopy

- A tongue blade integrated with a mouthpiece presses to hold the tongue in an ideal manner.
- A standard type and a large type help insert the endoscope with an upturned guide tube, while a multi type helps insert the endoscope with a guide inclined upward.
- An [N] mark is printed, making it easy to distinguish between the top and the bottom.
- The part to be bitten is wound with a soft silicone belt, so the patient can easily bite it with a sense of stability (only multi type models E and Z are not provided with the soft silicone belt).
- Since the product is sterilized and intended for single use, it is free of infection risk. In addition, the trouble of washing, disinfection or sterilization can be saved.



Model	Compatible endoscope tip outer diameter	Fixed belt	Silicon pad of the biting part	
Standard type	4.9~6.0mm	×	○	
		○		
Large type	4.9~8.0mm	×		
		○		
Multi type	8.0~12.0mm	×		
Multi type E		○		
Multi type Z		×		
Multi type W		8.0~14.0mm	○	×