



**TUBE and PIPE, TURKEY**

**COROTUBE INDUSTRIAL**

Orhan Öztürk

Esentepe Mah. Milangaz Cd. Ünlüer St. No:46/6 F22 34870 Kartal Istanbul Türkiye

T: +90 216 3876740 \ GSM: +90 532 7167252

E. [orhan.ozturk@corotube.com](mailto:orhan.ozturk@corotube.com) \ [www.corotube.com](http://www.corotube.com)



**COROTUBE**

INDUSTRIAL

## **Orhan Öztürk**

**M.Sc. Metallurgical and Materials Eng.**

- **2019 July – Today, COROTUBE INDUSTRIAL**  
**Founder**
- **2017 Dec – 2019 July, CERATIZIT GROUP**  
**Business Development Manager \ Petro Industry and Tubes**
  - ✓ Developing market for Ceratizit in the segment Tube&Pipe, Turkey
- **2017 Jan – 2017 Aug, BOEHLERIT TURKEY / Böhler Sert Maden**  
**International Sales Manager**
  - ✓ Product management for Tube&Pipe machining products
  - ✓ Responsibility for the sales and application of cutting tools worldwide

2008, Tube&Pipe Segment Manager

2005, Mould and Die Segment Leader

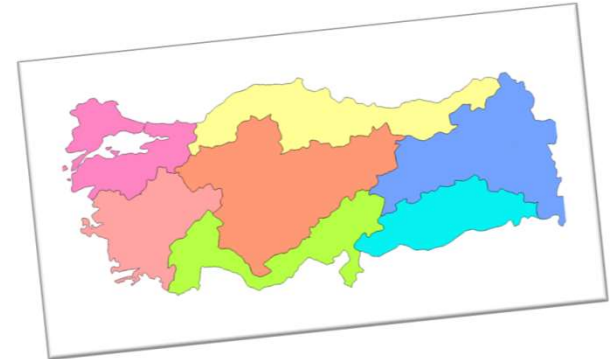
1997, Sales Executive

1995-97, Teaching Assistant at Middle East Technical University

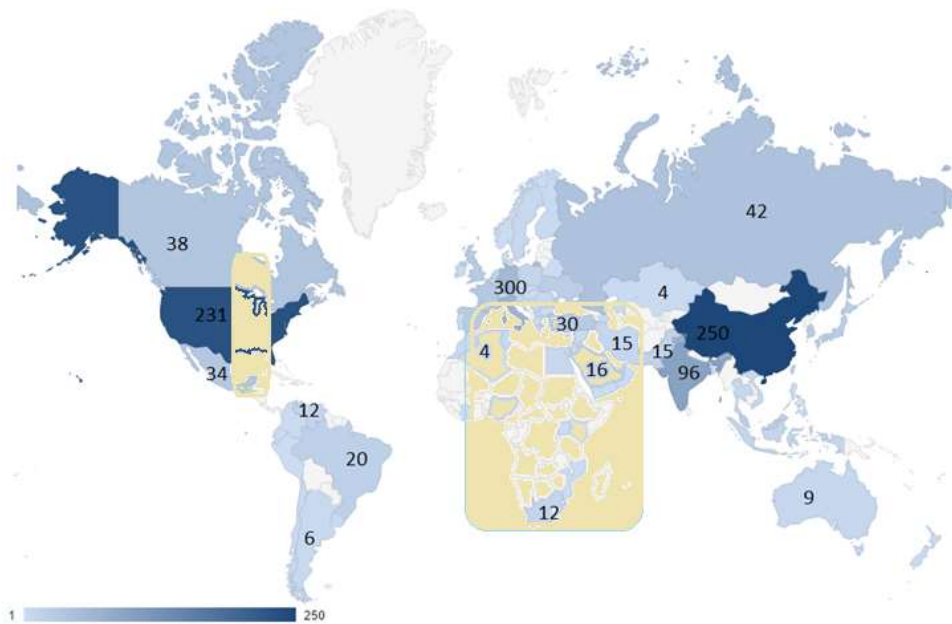


## EXPERIENCE HISTORY

- **Managed**
- ✓ **Turkey**  
Ankara, Istanbul, Kocaeli, Sakarya, Bursa, Çorum
- ✓ **Middle East and NA**  
Saudi Arabia, Iran, UAE, Jordan, Kuwait, Oman, Algeria, Azerbaijan, India, Pakistan
- ✓ **Other supported countries**  
USA, Mexico, South Africa, Austria, Australia

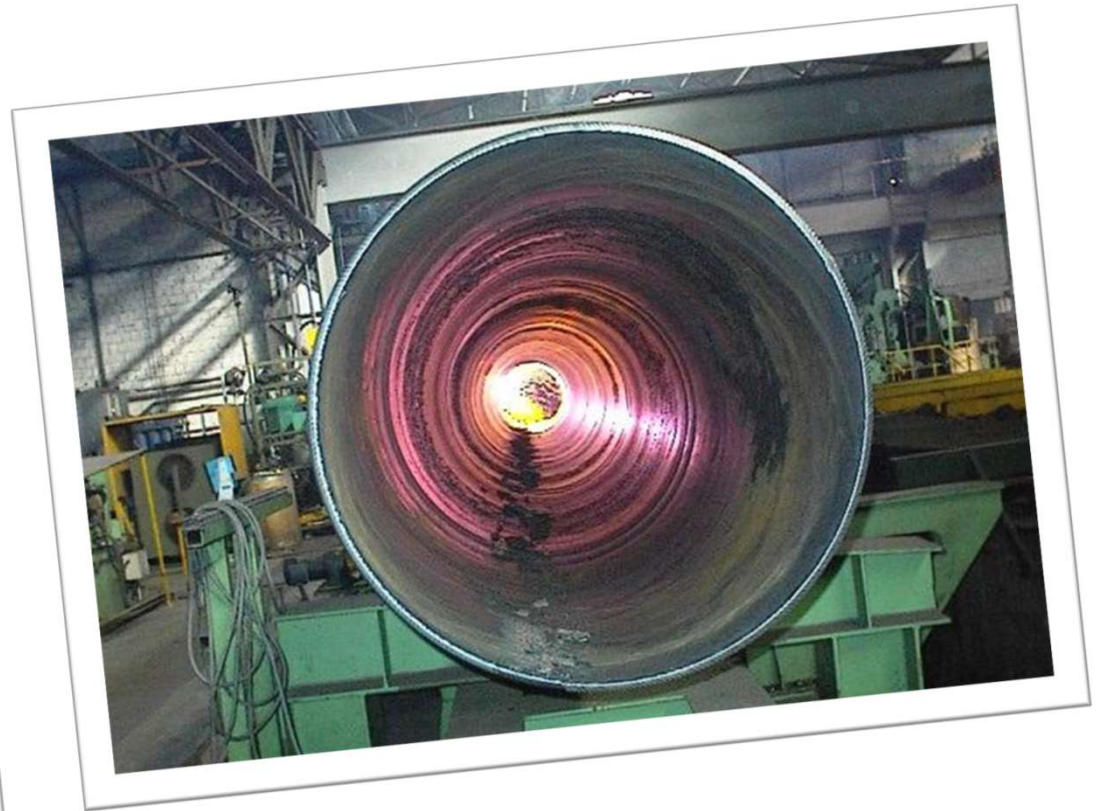


## Tube and Pipe Market Turkey & Worldwide

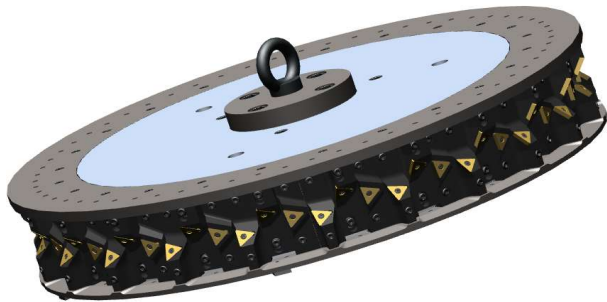




## WELDED PIPE MACHINING



## Welded Pipe Edge Preperation / Milling Cutter



- **Milling cutter 800 Ø for internal, external chamfer and facing**
- Insert TPNX 3307

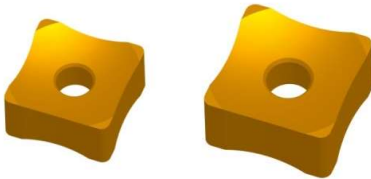
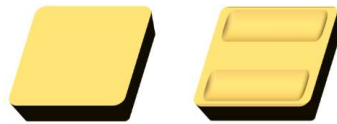


- **Milling cutter 500 Ø for internal, external chamfer and facing**
- Insert SPGW 190612



- **Milling cutter 1100 Ø for facing**
- Insert TPNX 3307

## Welded Pipe / External Scarfing



- **For Pipes Ø 114 – 610 mm, Wall thickness 6 – 25 mm**
- SPUN 350720... / SPUN 350720-P...
- SPUN 250620... / SPUN 250620-P...
  
- **For Precision Pipes Ø 25 – 180 mm, Wall thickness 1 – 12 mm**
- COES-S-19E4-ERxx... (SPUN 1904)
  
- **For Precision Pipes Ø 25 – 180 mm, Wall thickness 1 – 12 mm**
- Insert COES-S-15E8-ERxx 15 x 15 mm
- Insert COES-S-19E8-ERxx 19 x 19 mm
- Wall thickness

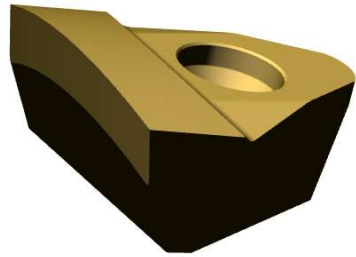
## Welded Pipe / External Scarfing

- **COES-S-15E8-ERxx**
  - $t = 7.8 \text{ mm}$
  - $L = 15.88 \text{ mm}$
  - 23 available radiuses: 4 to 100 mm
  - SNMX 1507..
- **Toolholder**
  - C/102423 (R), C/102426 (N), C/102427 (L)
  - Square chank : 25mm
- C/102145 with a swivel head C/101909
- Square chank : 32mm

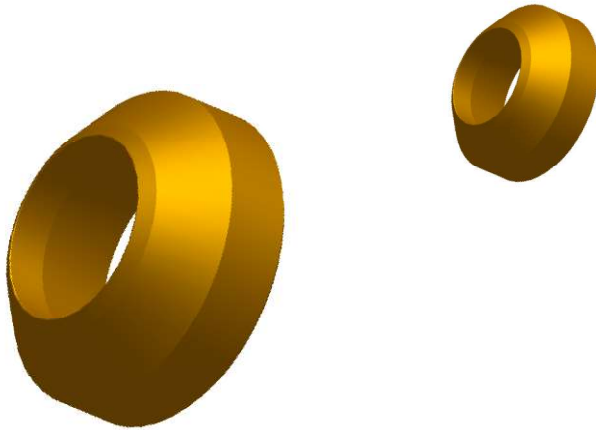




## Welded Pipe / Internal Scarfing



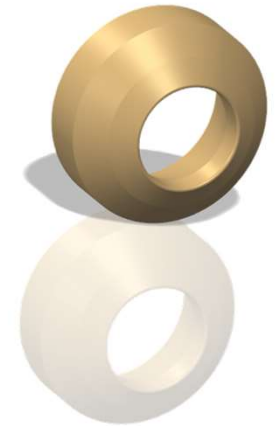
- For Pipes  $\varnothing$  193 – 450 mm, Wall thickness 5 – 45 mm
- Insert COIS-Q-25E1-Arxx



- For Pipes  $\varnothing$  25 – 180 mm, Wall thickness 1 – 12 mm
- Scarfing rings COIS-Rxx / R4,5 – R40

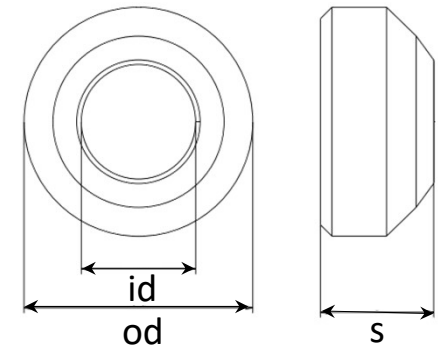
# Welded Pipe / Internal Scarfing

- Scarfig Rings

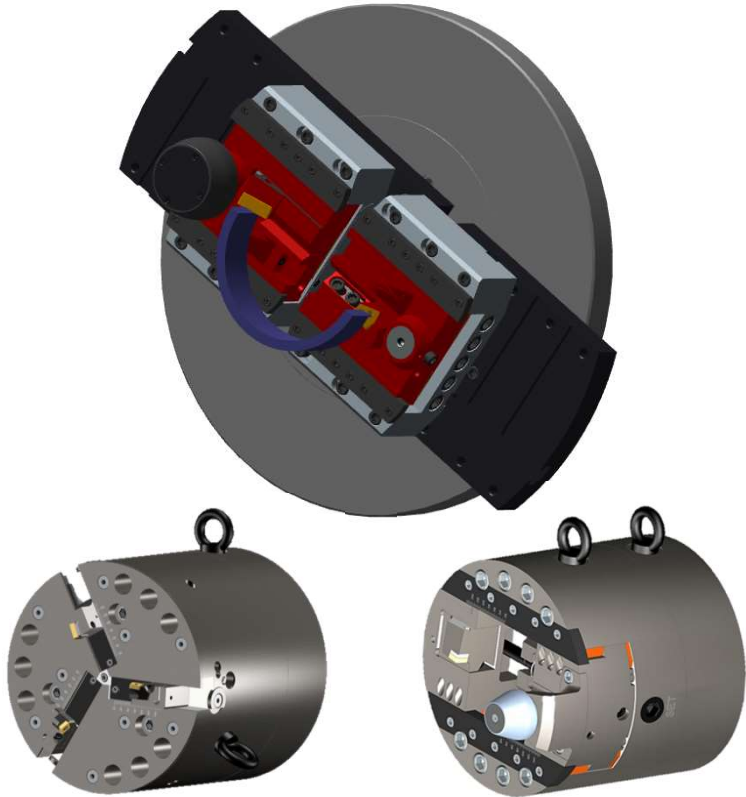


od (mm)	id (mm)	s (mm)	Reference
8.00	4.00	3.98	COIS-R-4K0-AR4,5
10.00	6.00	4.48	COIS-R-6K0-AR6,5
13.00	6.00	4.98	COIS-R-6K1-AR7
13.00	7.00	4.98	COIS-R-7K1-AR8
13.00	8.00	4.98	COIS-R-8K1-AR9
19.00	9.00	7.98	COIS-R-9K2-AR10
19.00	10.00	7.98	COIS-R-10K2-AR11
19.00	11.00	7.98	COIS-R-11K2-AR12

od (mm)	id (mm)	s (mm)	Reference
22.00	12.00	9.98	COIS-R-12K3-AR14
22.00	15.00	9.98	COIS-R-15K3-AR17
30.00	20.00	11.98	COIS-R-20K4-AR23
35.00	22.00	11.98	COIS-R-22K5-AR25
45.00	30.00	14.98	COIS-R-30K6-AR34
50.00	35.00	14.98	COIS-R-35K7-AR39
55.00	40.00	18.00	COIS-R-40K8-AR46



## Welded Pipe / Facing and Chamfering



- **For Pipes Ø 114 – 610 mm, Wall thickness 6 – 25 mm**
  - TNMM 270612
  - TNMM 330924
  - TNMX 44
  - SNMM 190612
- 
- **For Pipes Ø 33,4 – 140 mm, Wall thickness 1.2 – 6 mm**
  - CCMT 09T304 ...
  - SNMM 120412...
  - SNMM 190412...
  - Specific insert for internal chamfer