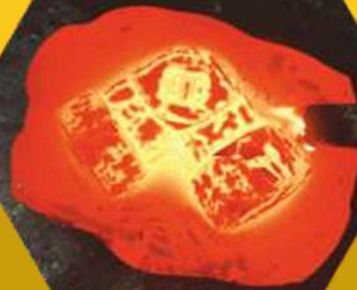




SINCE 2008

BAKIROGLU
FITTINGS



With BT Quality and Assurance

- Stainless Pipe and Steel Pipe
- Connector/ Male-Female
- Forged Stainless Steel Olet Fittings
- Forged Carbon Steel Olet Fittings
- Forged Stainless Steel Threaded & SW Fittings
- Forged Carbon Steel Threaded & SW Fittings
- Stainless and Carbon Steel Flanges with ANSI, DIN, JIS Norms
- Private Connection Elements
- Private Alloy Fittings



www.bakiroglutesisat.com
www.paslanmazfittings.com.tr



Quality
Reliance
Expertise



ABOUT THE

Bakirođlu Tesisat Materials Industry and Trade Limited Company deals with the production and sales of stainless fittings, piping and connection parts since year 2008.

As being a producer company, all of our products are being produced within our own institution and with the advanced technology that is used, our stainless steel products bear the capacity to meet all of national and international sector requirements.

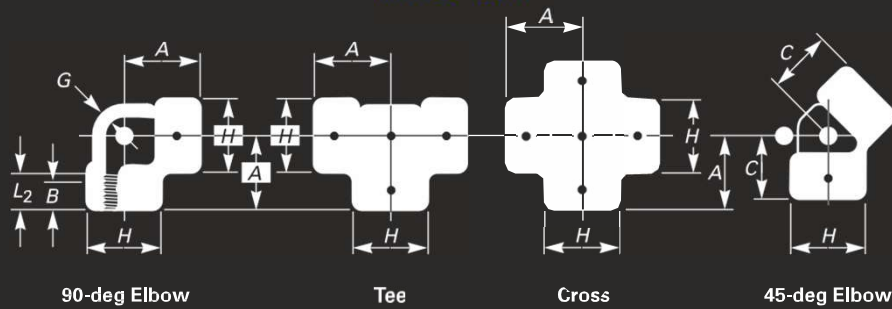
Fixed principles of the company have been assurance of continuity, quality products, timely delivery and convenient prices. Bakirođlu Tesisat company continues with their activities on a closed area of 650m² in the Basiskele district of Kocaeli, with their professional team since the day of their establishment till today, in line with their continuous innovation and quality improvement philosophy.

COMPANY QUALITY POLICY

It is related with providing services with the principle of being customer focused, in order to meet customer requests and expectations without giving up from quality and by continuously improving the service quality. It is comprised of enabling participation by improving quality awareness, being responsible from quality with all their managers and employees, improving effectiveness by adopting continuous development, being respectful to environment, and complying with the laws and regulations.



Threaded Elbows, Tees, and Crosses NPT-BSP-BSPT



Nominal Pipe Size	Center-to-End Elbows, Tees, and Crosses, A			Center-to-End 45-deg Elbow, C			Outside Diameter of Band, H			Minimum Wall Thickness, G			Minimum Length of Thread [Note(1)]	
	2000	3000	6000	2000	3000	6000	2000	3000	6000	2000	3000	6000	B	L ₂
1/8	21	21	25	17	17	19	22	22	25	3.18	3.18	6.35	6.4	6.7
1/4	21	25	28	17	19	22	22	25	33	3.18	3.30	6.60	8.1	10.2
3/8	25	28	33	19	22	25	25	33	38	3.18	3.51	6.98	9.1	10.4
1/2	28	33	38	22	25	28	33	38	46	3.18	4.09	8.15	10.9	13.6
3/4	33	38	44	25	28	33	38	46	56	3.18	4.32	8.53	12.7	13.9
1	38	44	51	28	33	35	46	56	62	3.68	4.98	9.93	14.7	17.3
1 1/4	44	51	60	33	35	43	56	62	75	3.89	5.28	10.59	17.0	18.0
1 1/2	51	60	64	35	43	44	62	75	84	4.01	5.56	11.07	17.8	18.4
2	60	64	83	43	44	52	75	84	102	4.27	7.14	12.09	19.0	19.2
2 1/2	76	83	95	52	52	64	92	102	121	5.61	7.65	15.29	23.6	28.9
3	86	95	106	64	64	79	109	121	146	5.99	8.84	16.64	25.9	30.5
4	106	114	114	79	79	79	146	152	152	6.55	11.18	18.67	27.7	33.0

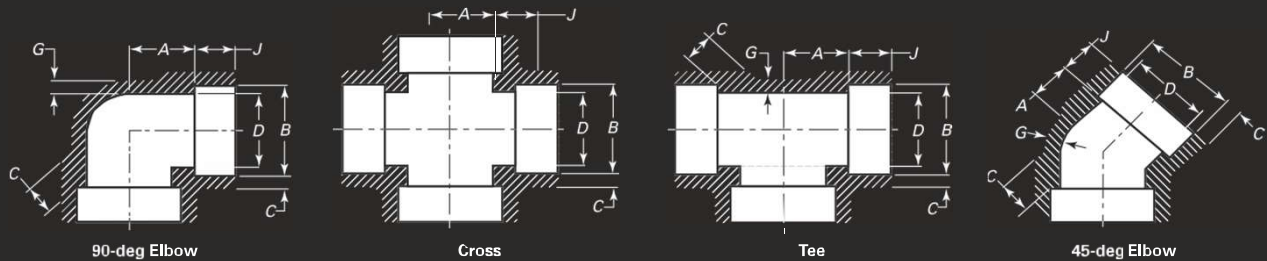
GENERAL NOTE: Dimensions are in millimeters.

NOTE: (1) Dimension B is minimum length of perfect thread. The length of useful thread (B plus threads with fully formed roots and flat crests) shall not be less than L₂ (effective length of external thread) required by American National Standard for Pipe Threads (ASME B1.20.1; see para.6.3).

Material Qualities :ASTM A 105 - ASTM A 350 LF2 / ASTM A, 694 F42 - F52 - F60 - F65 - F70,ASTM A 182 F1- F11 - F12 - F22 - F5 - F9 -,F91 - F92, ASTM A 182 F 304 / 304 L / 304 H, ASTM A 182 F 321 / 321 H, ASTM A 182 F 347 / 347 H, ASTM A 182 F 316 / 316 L / 316 H/316 TI, Duplex - Super Duplex - Inconel - Incoloy, - Monel - Hastelloy - Titanium / Ti-Gr2



Socket-Welding Elbows, Tees, and Crosses



Nominal Pipe Size	Socket Bore Diam., B		Bore Diameter of Fitting β						Socket Wall Thickness [Note (1)]						Body Wall			Socket Depth, J	Center-to-Bottom of Socket β						
			3000		6000		9000		3000		6000		9000		3000	6000	9000		90 El, Cross, Tee		45-deg Elbow		Tol \pm		
			Max.	Min.	Max.	Min.	Max.	Min.	Max.	Min.	Avg.	Min.	Avg.	Min.	Avg.	Min.	Min.		Min.	Min.	3000	6000		9000	3000
1/8	11.2	10.8	7.6	6.1	4.8	3.2	3.18	3.18	3.96	3.43	2.41	3.15	...	9.5	11.0	11.0	...	8.0	8.0	...	1.0
1/4	14.6	14.2	10.0	8.5	7.1	5.6	3.78	3.30	4.60	4.01	3.02	3.68	...	9.5	11.0	13.5	...	8.0	8.0	...	1.0
3/8	18.0	17.6	13.3	11.8	9.9	8.4	4.01	3.50	5.03	4.37	3.20	4.01	...	9.5	13.5	15.5	...	8.0	11.0	...	1.5
1/2	22.2	21.8	16.6	15.0	12.5	11.0	7.2	5.6	4.67	4.09	5.97	5.18	9.35	8.18	3.73	4.78	7.47	9.5	15.5	19.0	25.5	11.0	12.5	15.5	1.5
3/4	27.6	27.2	21.7	20.2	16.3	14.8	11.8	10.3	4.90	4.27	6.96	6.04	9.78	8.56	3.91	5.56	7.82	12.5	19.0	22.5	28.5	13.0	14.0	19.0	1.5
1	34.3	33.9	27.4	25.9	21.5	19.9	16.0	14.4	5.69	4.98	7.92	6.93	11.38	9.96	4.55	6.35	9.09	12.5	22.5	27.0	32.0	14.0	17.5	20.5	2.0
1 1/4	43.1	42.7	35.8	34.3	30.2	28.7	23.5	22.0	6.07	5.28	7.92	6.93	12.14	10.62	4.85	6.35	9.70	12.5	27.0	32.0	35.0	17.5	20.5	22.5	2.0
1 1/2	49.2	48.8	41.6	40.1	34.7	33.2	28.7	27.2	6.35	5.54	8.92	7.80	12.70	11.12	5.08	7.14	10.15	12.5	32.0	38.0	38.0	20.5	25.5	25.5	2.0
2	61.7	61.2	53.3	51.7	43.6	42.1	38.9	37.4	6.93	6.04	10.92	9.50	13.84	12.12	5.54	8.74	11.07	16.0	38.0	41.0	54.0	25.5	28.5	28.5	2.0
2 1/2	74.4	73.9	64.2	61.2	8.76	7.67	7.01	16.0	41.0	28.5	2.5
3	90.3	89.8	79.4	76.4	9.52	8.30	7.62	16.0	57.0	32.0	2.5
4	115.7	115.2	103.8	100.7	10.69	9.35	8.56	19.0	66.5	41.0	2.5

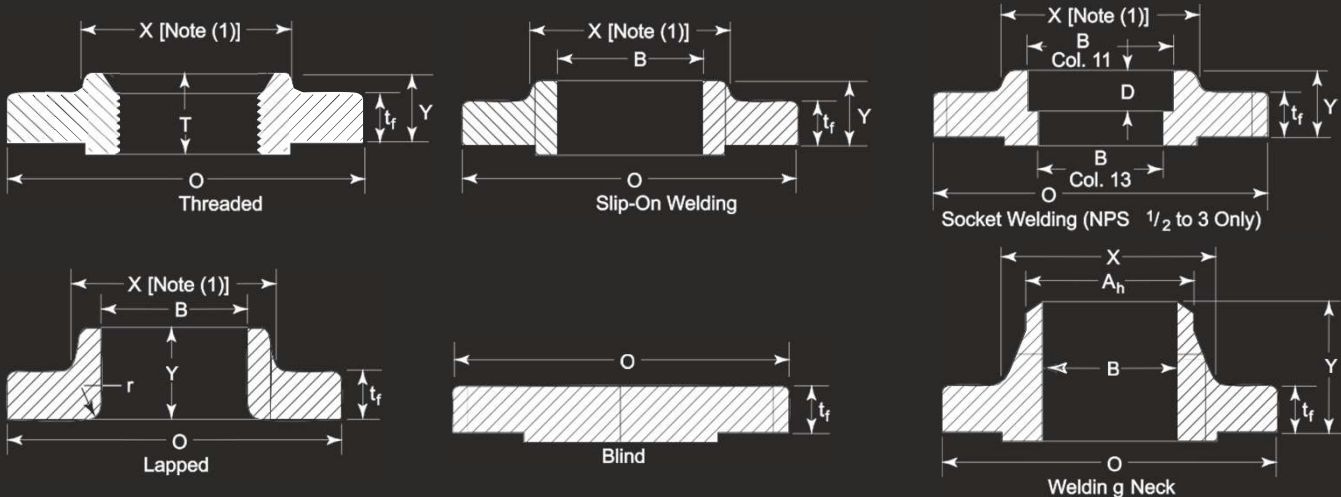
GENERAL NOTE: Dimensions are in millimeters.

NOTE: (1) Average of socket wall thickness around periphery shall not be less than listed values. The minimum values are permitted in localized areas.

Material Qualities : ASTM A 105 - ASTM A 350 LF2 / ASTM A, 694 F42 - F52 - F60 - F65 - F70, ASTM A 182 F1- F11 - F12 - F22 - F5 - F9 - , F91 - F92, ASTM A 182 F 304 / 304 L / 304 H, ASTM A 182 F 321 / 321 H, ASTM A 182 F 347 / 347 H, ASTM A 182 F 316 / 316 L / 316 H/316 Ti, Duplex - Super Duplex - Inconel - Incoloy , - Monel - Hastelloy - Titanium / Ti-Gr2



Dimension of Class 150 (300,600,900,1500,2500) Flanges



Nominal Pipe Size, NPS	Outside Diameter of Flange, O	Minimum Thickness of Flange, t_f [Notes(2)-(4)]	Minimum Thickness Lap Joint, t_f	Diameter of Hub, X	Hub Diameter Beginning of Chamfer Welding Neck, A_h [Note(5)]	Length Through Hub			Minimum Thread Length, T [Note(6)]	Bore		Welding Neck/Socket Welding, B [Note(7)]	Corner Bore Radius of Lapped Flange and Pipe, r	Depth of Socket, D
						Threaded/Slip-on/Socket Welding, Y	Lapped, Y	Welding Neck, Y		Minimum Slip-on/Socket Welding, B	Minimum Lapped, B			
1/2	90	9.6	11.2	30	21.3	14	16	46	16	22.2	22.9	15.8	3	10
3/4	100	11.2	12.7	38	26.7	14	16	51	16	27.7	28.2	20.9	3	11
1	110	12.7	14.3	49	33.4	16	17	54	17	34.5	34.9	26.6	3	13
1 1/4	115	14.3	15.9	59	42.2	19	21	56	21	43.2	43.7	35.1	5	14
1 1/2	125	15.9	17.5	65	48.3	21	22	60	22	49.5	50.0	40.9	6	16
2	150	17.5	19.1	78	60.3	24	25	62	25	61.9	62.5	52.5	8	17
2 1/2	180	20.7	22.3	90	73.0	27	29	68	29	74.6	75.4	62.7	8	19
3	190	22.3	23.9	108	88.9	29	30	68	30	90.7	91.4	77.9	10	21
3 1/2	215	22.3	23.9	122	101.6	30	32	70	32	103.4	104.1	90.1	10	...
4	230	22.3	23.9	135	114.3	32	33	75	33	116.1	116.8	102.3	11	...
5	255	22.3	23.9	164	141.3	35	36	87	36	143.8	144.4	128.2	11	...
6	280	23.9	25.4	192	168.3	38	40	87	40	170.7	171.4	154.1	13	...
8	345	27.0	28.6	246	219.1	43	44	100	44	221.5	222.2	202.7	13	...
10	405	28.6	30.2	305	273.0	48	49	100	49	276.2	277.4	254.6	13	...
12	485	30.2	31.8	365	323.8	54	56	113	56	327.0	328.2	304.8	13	...
14	535	33.4	35.0	400	355.6	56	79	125	57	359.2	360.2	Note(8)	13	...
16	595	35.0	36.6	457	406.4	62	87	125	64	410.5	411.2	Note(8)	13	...
18	635	38.1	39.7	505	457.0	67	97	138	68	461.8	462.3	Note(8)	13	...
20	700	41.3	42.9	559	508.0	71	103	143	73	513.1	514.4	Note(8)	13	...
24	815	46.1	47.7	663	610.0	81	111	151	83	616.0	616.0	Note(8)	13	...

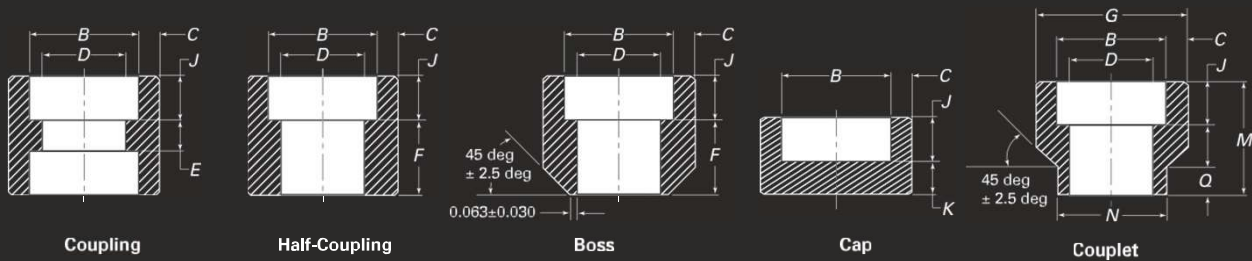
GENERAL NOTE:

(a) Dimensions are in millimeters.

Material Qualities: ASTM A 105, ASTM A 182 F1 - F11 - F12 - F22 - F5, F9 - F91, 16 Mo 3, 13 CrMo 44, 10 CrMo 9 - 10, ASTM A 182 F 304 / 304 L / 304 H, ASTM A 182 F 321 / 321 H, ASTM A 182 F 347 / 347 H, ASTM A 182 F 316 / 316 L / 316 H/316 Ti, 1.4301 / 1.4307 / 1.4541, 1.4401 / 1.4404 / 1.4571, Duplex - Super Duplex - Inconel - Monel, Hastelloy - Titanium / Ti-Gr2



Socket & Threaded Couplings, Bosses, Caps and Couplets



Nominal Pipe Size	Socket Bore Dia.,B		Bore Diameter of Fitting,B						Socket Wall Thickness, [No(±)],C						Outside Dia. Couplet, G		Socket Depth/ Laying Lgth.,E Tol.	Laying Lgth.,F Tol.	End Wall Thickness,K			End to End Couplet,M Tol.	Weld Ring Diameter,N Tol.	Weld Ring Length, Q Tol.																		
	3000	6000	9000	3000	6000	9000	3000	6000	9000	3000	6000	±	Min.	±	±	Min.			Min.	Min.	±			±	3000/ 6000	±																
	Max.	Min.	Max.	Min.	Max.	Min.	Max.	Min.	Avg.	Min.	Avg.	Min.	Avg.	Min.	3000	6000	±	Min.	±	±	Min.	Min.	Min.	±	±	±																
1/8	11.2	10.8	7.6	6.1	4.8	3.2	...	3.18	3.18	3.96	3.43	±1.5/-0.0	9.5	6.5	1.5	16.0	1.5	4.8	6.4							
1/4	14.6	14.2	10.0	8.5	7.1	5.6	...	3.78	3.30	4.60	4.01	23.8	25.4	±1.5/-0.0	9.5	6.5	1.5	16.0	1.5	4.8	6.4	...	30.2	±0.8/-0.0	17.5	±1.5/-0.0	9.5	0.8					
3/8	18.0	17.6	13.3	11.8	9.9	8.4	...	4.01	3.50	5.03	4.37	27.0	31.8	±1.5/-0.0	9.5	6.5	3.0	17.5	3.0	4.8	6.4	...	30.2	±0.8/-0.0	20.7	±1.5/-0.0	9.5	0.8				
1/2	22.2	21.8	16.6	15.0	12.5	11.0	7.2	5.6	4.67	4.09	5.97	5.18	9.35	8.18	33.4	38.1	±1.5/-0.0	9.5	9.5	3.0	22.5	3.0	6.4	7.9	11.2	33.4	±0.8/-0.0	23.8	±1.5/-0.0	9.5	0.8			
3/4	27.6	27.2	21.7	20.2	16.3	14.8	11.8	10.3	4.90	4.27	6.96	6.04	9.78	8.56	38.1	44.5	±1.5/-0.0	12.5	9.5	3.0	24.0	3.0	6.4	7.9	12.7	34.9	±0.8/-0.0	27.0	±1.5/-0.0	9.5	0.8			
1	34.3	33.9	27.4	25.9	21.5	19.9	16.0	14.4	5.69	4.98	7.92	6.93	11.38	9.96	46.1	57.2	±1.5/-0.0	12.5	12.5	4.0	28.5	4.0	9.6	11.2	14.2	47.6	±0.8/-0.0	42.9	±1.5/-0.0	9.5	0.8		
1 1/4	43.1	42.7	35.8	34.3	30.2	28.7	23.5	22.0	6.07	5.28	7.92	6.93	12.14	10.62	55.6	63.5	±1.5/-0.0	12.5	12.5	4.0	30.0	4.0	9.6	11.2	14.2	47.6	±0.8/-0.0	42.9	±1.5/-0.0	9.5	0.8	
1 1/2	49.2	48.8	41.6	40.1	34.7	33.2	28.7	27.2	6.35	5.54	8.92	7.80	12.70	11.12	63.5	76.2	±1.5/-0.0	12.5	12.5	4.0	32.0	4.0	11.2	12.7	15.7	50.8	±0.8/-0.0	49.2	±1.5/-0.0	9.5	0.8
2	61.7	61.2	53.3	51.7	43.6	42.1	38.9	37.4	6.93	6.04	10.92	9.50	13.84	12.21	79.4	92.1	±1.5/-0.0	16.0	19.0	4.0	41.0	4.0	12.7	15.7	19.0	57.2	±1.5/-0.0	61.9	±1.5/-0.0	9.5	0.8	
2 1/2	74.4	73.9	64.2	61.2	8.76	7.67	92.1	108.0	±1.5/-0.0	16.0	19.0	5.0	43.0	5.0	15.7	19.0	...	63.5	±1.5/-0.0	73.0	±1.5/-0.0	9.5	0.8	
3	90.3	89.8	79.4	76.4	9.52	8.30	111.1	127.0	±1.5/-0.0	16.0	19.0	5.0	44.5	5.0	19.0	22.4	...	69.9	±1.5/-0.0	88.9	±1.5/-0.0	9.5	0.8
4	115.7	115.2	103.8	100.7	10.69	9.35	141.3	158.8	±1.5/-0.0	19.0	19.0	5.0	48.0	5.0	22.4	28.4	...	76.2	±1.5/-0.0	114.3	±1.5/-0.0	9.5	0.8

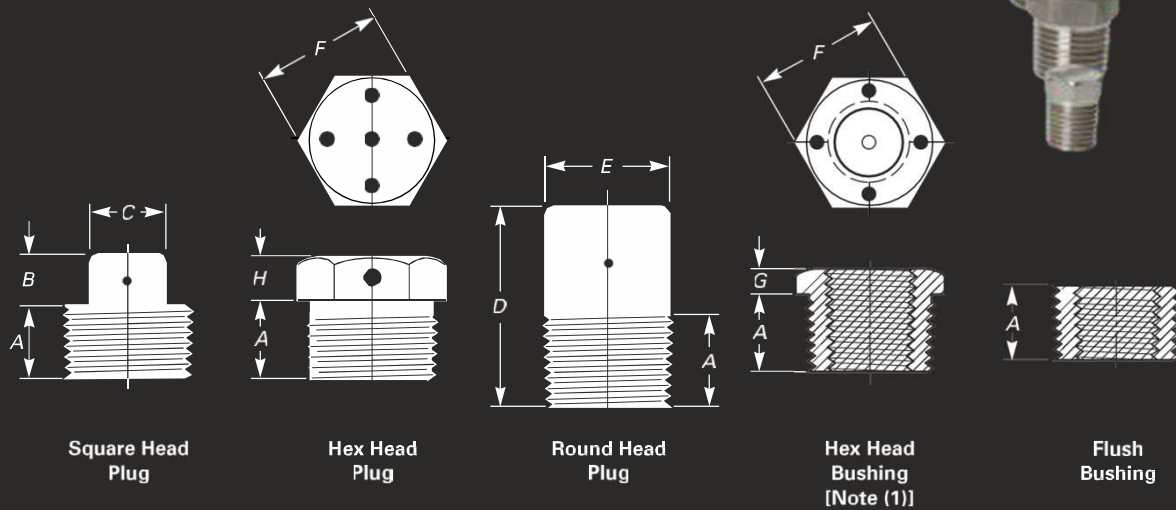
GENERAL NOTE: Dimensions are in millimeters.

NOTE: (1) Average of socket wall thickness around periphery shall not be less than listed values.
The minimum values are permitted in localized areas.

Material Qualities: ASTM A 105 - ASTM A 350 LF2 / ASTM A, 694 F42 - F52 - F60 - F65 - F70, ASTM A 182 F1- F11 - F12 - F22 - F5 - F9 -, F91 - F92, ASTM A 182 F 304 / 304 L / 304 H, ASTM A 182 F 321 / 321 H, ASTM A 182 F 347 / 347 H, ASTM A 182 F 316 / 316 L / 316 H/316 Ti, Duplex - Super Duplex - Inconel - Incoloy , - Monel - Hastelloy - Titanium / Ti-Gr2



Plugs and Bushings



Nominal Pipe Size	Minimum Length, A	Square Head Plugs		Round Head Plugs		Hex Plugs and Bushings		
		Minimum Square Height, B	Minimum Width Flats, C [Note(2)]	Nominal Head Diameter, E	Minimum Length, D	Nominal Width Flats, F [Note(2)]	Minimum Hex Height	
							Bushing, G	Plug, H
1/8	10	6	7.15	10	35	11.11	...	6
1/4	11	6	9.55	14	41	15.88	3	6
3/8	13	8	11.11	18	41	17.46	4	8
1/2	14	10	14.29	21	44	22.23	5	8
3/4	16	11	15.88	27	44	26.99	6	10
1	19	13	20.64	33	51	34.93	6	10
1 1/4	21	14	23.81	43	51	44.45	7	14
1 1/2	21	16	28.58	48	51	50.80	8	16
2	22	18	33.27	60	64	63.50	9	18
2 1/2	27	19	38.10	73	70	76.20	10	19
3	28	21	42.86	89	70	88.90	10	21
4	32	25	63.50	114	76	117.48	13	25

GENERAL NOTE: Dimensions are in millimeters.

NOTE: (1) Cautionary Note Regarding Hex Bushings - Hex head bushings of one-size reduction should not be used in services where they might be subject to harmful loads and forces other than internal pressures.

Material Qualities : ASTM A 105 - ASTM A 350 LF2 / ASTM A, 694 F42 - F52 - F60 - F65 - F70, ASTM A 182 F1- F11 - F12 - F22 - F5 - F9 -, F91 - F92, ASTM A 182 F 304 / 304 L / 304 H, ASTM A 182 F 321 / 321 H, ASTM A 182 F 347 / 347 H, ASTM A 182 F 316 / 316 L / 316 H/316 Ti, Duplex - Super Duplex - Inconel - Incoloy , - Monel - Hastelloy - Titanium / Ti-Gr2

Forged Steel & Stainless Steel Olet Fittings



MATERIAL STANDARDS: ANSI B 16.11, MSS-SP-95, MSS-SP-97 and private drawings.

- Measures/ Dimensions: 1/8" – 4"

- Pressure class: 3000 - 6000 - 9000LB

- Wall thickness: SCH 5S – SCH XXS

Material Qualities : ASTM A 105 - ASTM A 350 LF2 / ASTM A, 694 F42 - F52 - F60 - F65 - F70, ASTM A 182 F1- F11 - F12 - F22 - F5 - F9 -, F91 - F92, ASTM A 182 F 304 / 304 L / 304 H, ASTM A 182 F 321 / 321 H, ASTM A 182 F 347 / 347 H, ASTM A 182 F 316 / 316 L / 316 H/316 Ti, Duplex - Super Duplex - Inconel - Incoloy , - Monel - Hastelloy - Titanium / Ti-Gr2

www.bakiroglutesisat.com | www.paslanmazfittings.com.tr

Forged Threaded Fittings Nipple

Swage Nipple



Reducer Nipple



Hex Nipple



Hose Nipple



Pipe Nipple



MATERIAL STANDARDS : ANSI B 16.11, MSS-SP-95, MSS-SP-97 and private drawings.

- Measures/ Dimensions: 1/8" – 4"
- Pressure class:- 3000 - 6000 - 9000LB
- Wall thickness: SCH5-SCHXXS

Material Qualities : ASTM A 105 - ASTM A 350 LF2 / ASTM A, 694 F42 - F52 - F60 - F65 - F70, ASTM A 182 F1- F11 - F12 - F22 - F5 -F9 -, F91 - F92, ASTM A 182 F 304 / 304 L / 304 H, ASTM A 182 F 321 / 321 H, ASTM A 182 F 347 / 347 H, ASTM A 182 F 316 / 316 L / 316 H/316 Ti, Duplex - Super Duplex - Inconel - Incoloy , - Monel - Hastelloy - Titanium / Ti-Gr2



SINCE 2008

BAKIROGLU
FITTINGS



Threaded & Socket Union

MATERIAL STANDARDS : ANSI B 16.11, MSS-SP-95, MSS-SP-97 and private drawings.

- Measures/ Dimensions: 1/8" – 4"

- Pressure class: 3000 - 6000 - 9000LB

Material Qualities : ASTM A 105 - ASTM A 350 LF2 / ASTM A, 694 F42 - F52 - F60 - F65 - F70, ASTM A 182 F1- F11 - F12 - F22 - F5 - F9 -, F91 - F92, ASTM A 182 F 304 / 304 L / 304 H, ASTM A 182 F 321 / 321 H, ASTM A 182 F 347 / 347 H, ASTM A 182 F 316 / 316 L / 316 H/316 Ti, Duplex - Super Duplex - Inconel - Incoloy , - Monel - Hastelloy - Titanium / Ti-Gr2

Özel Ürünler / Special Products



Private products are manufactured in accordance with technical drawings.

www.bakiroglutesisat.com | www.paslanmazfittings.com.tr



SINCE 2008
BAKIROĞLU
FITTINGS

BT Quality and
with Assurance



TARGETS

- Zero number of accidents and events regarding safe working within context of OHS-ES.
- Making company's ISO 9001 Quality systems and environmental protection awareness to be adopted by all the employees.
- Manufacturing private and quality products in accordance with customer requests.
- Being primarily preferred by customers in the sector.
- Operating efficiently by continuously optimizing raw material and production costs and by creating price advantage in the market.
- Ensuring sustainability of pioneering and continuity.

CERTIFICATES



Quality
is not a coincidence.



SINCE 2008

BAKIROGLU
FITTINGS

-  Bakirođlu Tesisat  bakiroglu.tesisat
 www.bakiroglutesisat.com | www.paslanmazfittings.com.tr
 info@bakiroglutesisat.com
 +90 262 349 63 02 - +90 262 349 63 04
 +90 533 415 70 95
 +90 262 349 63 30
 Karadenizliler Mah. Kirazlı Sok.No : 7 Başiskele / KOCAELİ