

GÜCÜNÜ BİLGİDEN ALIR



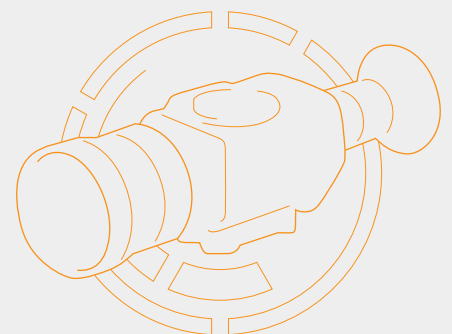
Lightweight
Low Power

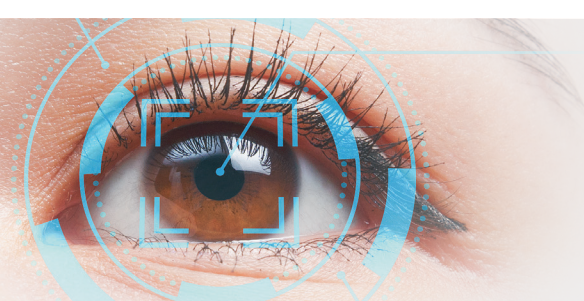


Electro Optic Systems

NEZİH

THERMAL SIGHT





SPECIFICATIONS

Array Specifications

Array Type	Uncooled microbolometer
Material	ASi
Detector Pitch	17 μm x 17 μm 12 μm x 12 μm
Spectral Band	8 μm to 14 μm
Resolution	640 (Horizontal) x 480 (Vertical)
Sensitivity (f#1.0, 300 K)	< 60 mK (for 12 μm x 12 μm) < 50 mK (for 17 μm x 17 μm and 12 μm x 12 μm) < 30 mK (for 17 μm x 17 μm)
Pixel Operability	> 99.0 %

Optical Interface

Effective Focal Length (EFL)	75 mm (3%5) manual focus 60 mm (3%5) 35 mm (3%5)
FOV (Horizontal)	8.2° (3%5) (for EFL: 75 mm)(for 17 μm x 17 μm) 5.8° (3%5) (for EFL: 75 mm)(for 12 μm x 12 μm) 10.2° (3%5) (for EFL: 60 mm)(for 17 μm x 17 μm) 7.3° (3%5) (for EFL: 60 mm)(for 12 μm x 12 μm) 17.6° (3%5) (for EFL: 35 mm)(for 12 μm x 12 μm) 12.5° (3%5) (for EFL: 35 mm)(for 12 μm x 12 μm)
f/#	1.2 (3%5) (for EFL: 75 mm) 1.25 (3%5) (for EFL: 60 mm) 1.2 (3%5) (for EFL: 35 mm)
Focus Type	Manual focus (for EFL: 75 mm) Fixed focus, Athermalized (for EFL: 60 mm and 35 mm)
Focus Range	5m to infinity (for EFL: 75 mm) 2 m to infinity (for EFL: 60 mm) 1 m to infinity (for EFL: 35 mm)

Mechanical Interface

Dimensions	80 mm x 79 mm x 244 mm (3%10) (Optics with EFL: 75 mm) 80 mm x 76 mm x 220 mm (3%10) (Optics with EFL: 60 mm) 80 mm x 76 mm x 198 mm (3%10) (Optics with EFL: 35 mm)
Weight (without accessories)	670 gr (3%10) (Optics with EFL: 75 mm) 610 gr (3%10) (Optics with EFL: 60 mm) 500 gr (3%10) (Optics with EFL: 35 mm)

Imaging Performance

Frame Rate	25 Hz [CCIR (PAL)] (Configurable up to 60 Hz.)
Time-to-image	< 2 sec
Digital Zoom	X1, X2, X3, X4
Digital Zoom Continuous	From X1 to X4 with 0.02 steps
Noise Cancellation	Adaptive Temporal and Spatial Noise Cancellation
Detail Enhancement	Edge Aware Adaptive Digital Detail Enhancement
Image Enhancement	Plateau-based Adaptive Histogram Equalization / Linear / Manual
Color Palette	Up to 8 different palettes
Live Calibration	With Shutter (periodic or externally controllable)

Interfaces

Connector	ODU - G80YAR-P10WCDO-000L
Communication	RS-232
Power	Operation with two 18650 type battery
Power Input Voltage	2.8 V to 5.5 V
Operation time with one battery set	20 hours
Maximum Power Consumption	< 1.2 W (Typically 1 W)
Display	800 X 600 Colored Oled Display
Analog Video Output	CCIR (PAL)
Diopter Adjustments	-6 / +2

Environmental Conditions

Environmental Conditions	MIL-STD-810
--------------------------	-------------

Accessories

	Two rechargeable 18650 type lithium ion batteries
	Battery charger (for charging two batteries at the same time)
	Piccatiny mounting adapter
	Eyecup
	Front lens protection cover
	Lens cleaning kit
	Transportation bag
	Reflex sight (optional)
	Solar charger (optional)
	Piccatiny rail (optional)

Specifications are subject to change without notice.

GENERAL

- High range performance
- Advance image processing algorithms
- Low power consumption
- Fast start up time
- Long operation hours without changing battery
- Compact size
- Low weight
- Robust structure
- Different lens alternatives available
- Clip-on versions of each Thermal Sight is available

NEZiH

ALTAY Thermal Weapon Sight

APPLICATION

NEZiH Thermal Sight is rugged, lightweight, modular construction with superior thermal imaging technology.

NAME	DETECTOR PIXEL SIZE (μm x μm)	OPTIC EFL (mm)	NETD (mK)	CLIP-ON VERSION
NEZiH - 1735	17 x 17	35	< 50	NEZiH - 1735C
NEZiH - 1735P	17 x 17	35	< 30	NEZiH - 1735CP
NEZiH - 1235	12 x 12	35	< 60	NEZiH - 1235C
NEZiH - 1235P	12 x 12	35	< 50	NEZiH - 1235CP
NEZiH - 1760	17 x 17	60	< 50	NEZiH - 1760C
NEZiH - 1760P	17 x 17	60	< 30	NEZiH - 1760CP
NEZiH - 1260	12 x 12	60	< 60	NEZiH - 1260C
NEZiH - 1260P	12 x 12	60	< 50	NEZiH - 1260CP
NEZiH - 1775	17 x 17	75	< 50	NEZiH - 1775C
NEZiH - 1775P	17 x 17	75	< 30	NEZiH - 1775CP
NEZiH - 1275	12 x 12	75	< 60	NEZiH - 1275C
NEZiH - 1275P	12 x 12	75	< 50	NEZiH - 1275CP

