

A yellow 4x4 military rolling chassis vehicle is shown driving through a forest of tall, thin trees. The vehicle is viewed from a side-rear perspective, moving towards the right. A soldier in a green helmet and uniform is seated in the driver's position. The vehicle has a large, exposed engine compartment at the front and a flatbed chassis. The ground is covered in dry leaves and pine needles, and the scene is lit with natural sunlight filtering through the trees.

ÇUKUROVA DEFENCE

**4x4 8/9 TONS
MULTIPURPOSE ROLLING
CHASSIS PLATFORM**

ÇUKUROVA DEFENCE



GROUP INFO

Çukurova Group is one of the leading players of Turkish economy, taking the Turkish economy to higher levels since the foundation of the Republic. Capitalizing on business opportunities at both domestically and internationally levels, Çukurova group today is on the way to becoming a global player in various fields including industry, construction, information and communication technologies, media, transportation, trade and services, financial services and energy.

Established in 1923 as a textile mill in Tarsus, a small city along the Mediterranean coast of Southern Turkey, Çukurova Group quickly grew into a conglomerate within the industrial sector especially in the area of textiles and construction machinery. Coming from a strong legacy of the industrial sector as its traditional field of activity, the Group has always placed significant emphasis on its industrial operations. As the Group progressed, it acknowledged that further penetration into other sectors was necessary to meet its ambitious strategic targets. As a result of its investments in various other business avenues, today, the group has come to be globally recognized with operations in many different sectors such as industry, defence industry (vehicles, systems and solutions), construction, communication and information technologies, media, transportation, trade and services, financial services and energy.



FEATURES

The ÇUKUROVA 4x4 chassis can move at high speeds in all terrains and hostile areas where other 4x4 vehicles would encounter difficulties. This vehicle has proven its effectiveness, versatility and responsiveness where needed. Its design incorporates the latest technologies including.

- 4x4 or 4x2 traction with system control.
- Excellent approach and departure angles.
- High ground clearance.
- Four wheel double wishbone, coil spring, shock absorber heavy-duty suspension.
- 100% differential locks in both axles and in the transfer case, which allows us to transmit all the engine power to the wheels with adherence.
- Deep fording system, up to 700 mm depth.



COMPANY INFO

Launched in 1968 to manufacture agricultural machines under a licensing agreement with John Deere, Çukurova Makina produced 26,250 units over the next 18 years.

In 1986, Company has started to manufacture earth moving and industrial machines under its own lisenca and brand name "ÇUKUROVA". The company's outstanding product with the capacity to produce 2,000 units per annum include; forklift trucks backhoe loaders; wheel loaders and excavators. Using and integrating our 37 years group experience in construction machinery + automotive + defence industry we are opening a new product line and feature opportunities with new defence vehicles, systems and solutions. Products are assembled at the Company manufacturing facility located in Tarsus - TÜRKİYE with a covered area of 15,000 square meters situated on a 110,000 square meter site.

Within a few years the company has increased its market share noticeably in both local and global market by reaching a valuable sales volumes over 45 countries in the world. Besides operating in Europe, North Africa, Asia Pasific, Latin America, Middle, East and Ex-Soviet countries under the network of its esteemed dealers, Since 2004 Çukurova Makina Products are marketed globally through three brand families. ÇUKUROVA. TARSUS and CMI. All new and current products are blended by worldwide know components and latest.



Run Flat Tires (OPTIONAL)

Çukurova 4x4 chassis are equipped with RTF which are designed to resist the effects of deflation when punctured and to enable vehicles to continue to be driven at reduced speeds 30 km/h.



ÇUKUROVA DEFENCE

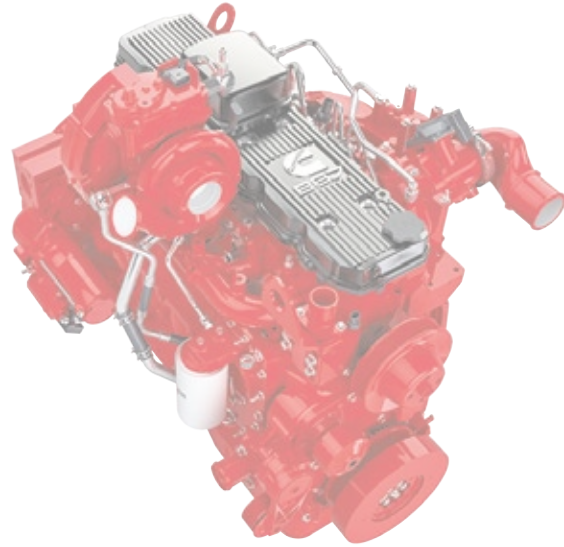
TECHNICAL SPECIFICATIONS

PERFORMANCE

Max.Speed On Road: 120 km/h
Gradeability: 60%
Side Slope: 30%
Range (On Road): 500 km

ENGINE

Cummins ISB 285 Hp, E3
Displacement 6.7 lt
6 Cylinders, In-line
Max. Power: 285 Hp, 2500 rpm
Max. Torque: 970 Nm, 1200 rpm
Fuel Tank Capacity: 150 lt.

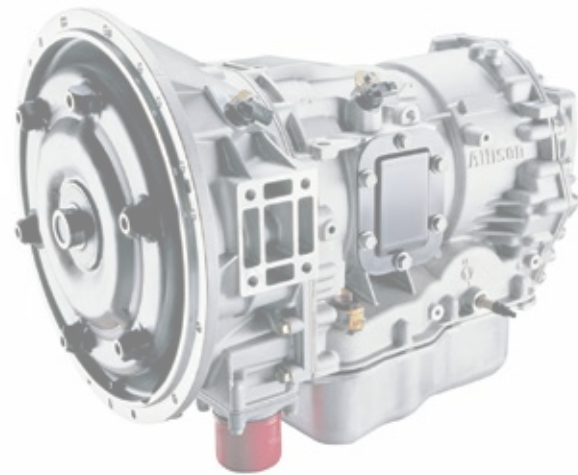


TORQUE CONVERTER

Fully Automatic
Transmission With Torque Converter

GEAR BOX

Allison Fully Automatic 2500 SP Serie
Forward: 6
Reverse: 1



TRANSFER CASE

Made: Cumitas
Low and High speed
Low:1;1 High: 2,3:1

AXLES

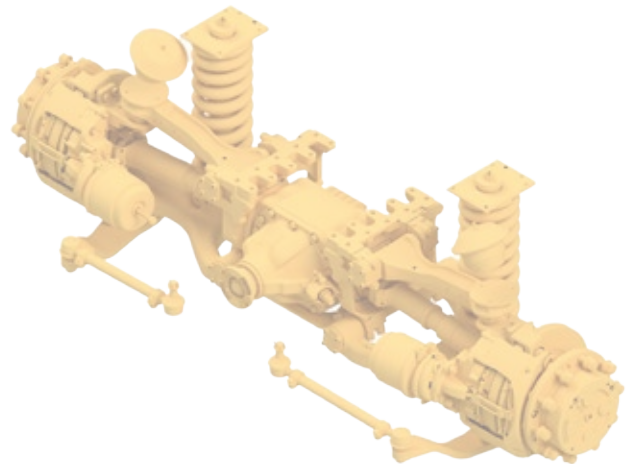
Front: Drive, Steer, Rigid
Rear: Drive, Rigid
GAWR: F/R max.: 5000/5500 kg.
Planetary, 100% Air Assist Diff. Lock
335 PCD, 280,8 Pilot Dia, 10 Studs, M22x1.5

TYRES AND RIMS

Tyres: 335/80 R20
Rims: 20-11 SDC

DIMENSIONS

		AS	OPTION
Wheelbase:	A	3300	650
Overall Chassis Length:	B	5325	5675
Front Overhang:	C	795	
Rear Overhang:	D	1230	
Front And Rear Track:	E	2050	
Chassis Height:	F	950	
Ground Clearance:	G	350	
Departure Angle:	H	40°	
Approach Angle:	I	68°	
Overall Chassis Width:	J	2385	
Water Fording:		700	



TECHNICAL SPECIFICATIONS

WEIGHTS

	AS	OPTION
Kerb Weight (Estimated):	4250	4500
Front Axle Kerb Weight:	2250	2385
Rear Axle Kerb Weight:	2000	2115
Pay Load:	4750	4500
Max. Permissible Total Weight Front:	4230	4230
Max. Permissible Total Weight Rear:	4770	4770
Gross Vehicle Weight (Max.):	9000	9000

SUSPENSION

Front: Coil Spring, Linkage System, Shock Absorbers, Antiroll Bar

Rear: Parabolic Leaf Spring, Shock Absorbers, Antiroll bar

BRAKES

Air Assist Hydraulic System, Double Circuit, Disc Brake, Front And Rear ABS

STEERING

Integral Hydraulic Servo Powered

Steering Angle (In Tyre): 35°

wb.3300 k.k:7163mm - w.w: 7715 mm

wb.3650 k.k:7800mm - w.w: 8380 mm

CHASSIS

Made: Çumitaş, High Resistance Steel Single Rail, "C" Section, Ladder Type, Bolted

ELECTRICAL SYSTEM

Main System 24 V, 120 Ah.

Battery: 2x12V 120Ah

Black Out Light System

OPTIONS

-32°C Cold Working Kit

CTIS

Run-Flat

24 Volt, Recovery Winch

Wiper Mechanism

Towing Hook

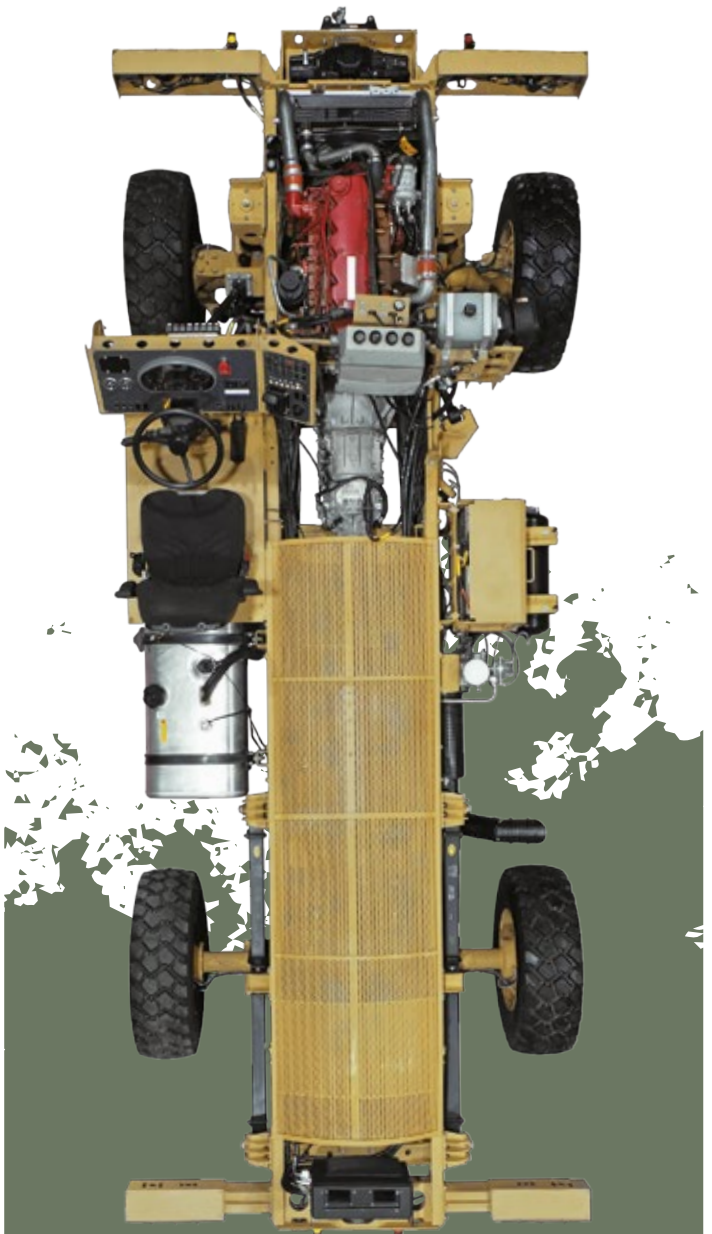


PHOTO GALLERY



ÇUKUROVA DEFENCE



Çukurova Makina İmalat ve Ticaret A.Ş
Şahin Mh. Sait Polat Blv. 322 / A 33470 Tarsus / Mersin / TÜRKİYE



+90 324 616 26 78



info@cukurovadefence.com - www.cukurovadefence.com