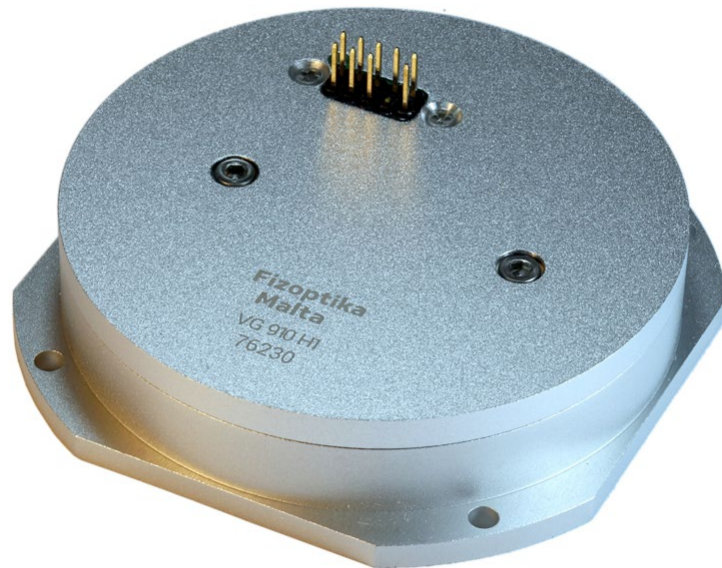


FIBER OPTIC GYROSCOPE

VG910H1



PERFORMANCE

Input range	°/s	250	for info
Bias, RMS	°/h	2	Allan variance min
ARW	°/√h	0.015 / 0.05	white noise PSD
Bandwidth	kHz	1	3 ^d order LPF
SF, RMS	%	0.02	day-to-day

ELECTRICAL INTERFACE

Start-up	s	0.03	
Powering	W	0.5	+5V

ENVIRONMENT

Operating temperature	°C	-40...+70	
		+70...+85	VG910H1-T85 option
		+70...+125	VG910H125C option
Endurance temperature	°C	-55...+85	> 2 h, non-operating
Vibration, RMS	g	30	20 Hz... 2000 Hz
Shocks	g	1200	1 ms half-sine

PHYSICAL PARAMETERS

Dimensions	mm	82 x 82 x 20	ISO 2768-m
Weight	gram	150	
Housing		Al alloy	anodizing

RELIABILITY

MTBF / Lifetime	yr	15	humidity conditions applied
-----------------	----	----	-----------------------------